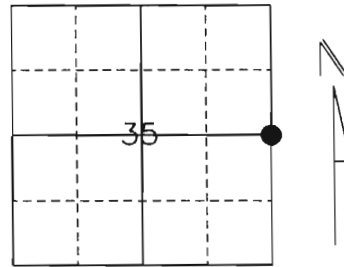


U.S. PUBLIC LAND SURVEY MONUMENT RECORD

Note: This form is intended and designed to fulfill all requirements of Wisconsin Administrative Code, Chapter A-E 5.02, U.S. Public Land Survey Monument Record (3) (a) (b) (c) (d) (e) (f) (g) (h) (l). An additional sheet may be added if necessary to conform with said requirements.

(a) Corner location: Township 31 North
 Range 7 East
 Town/City/Village Pine River
 County Lincoln



Section 35

(b) (f) (g) (h) Description of monument found at this corner and if it was accepted, state all evidence (material, testimonial, occupational, plats, records, other monuments) used as a basis for accepting. If not accepted or if nothing was found, state evidence used as a basis for establishing location. If reestablished through lost corner proportionate methods, indicate all monuments, distances and directions used to establish.

History of original corner establishment:

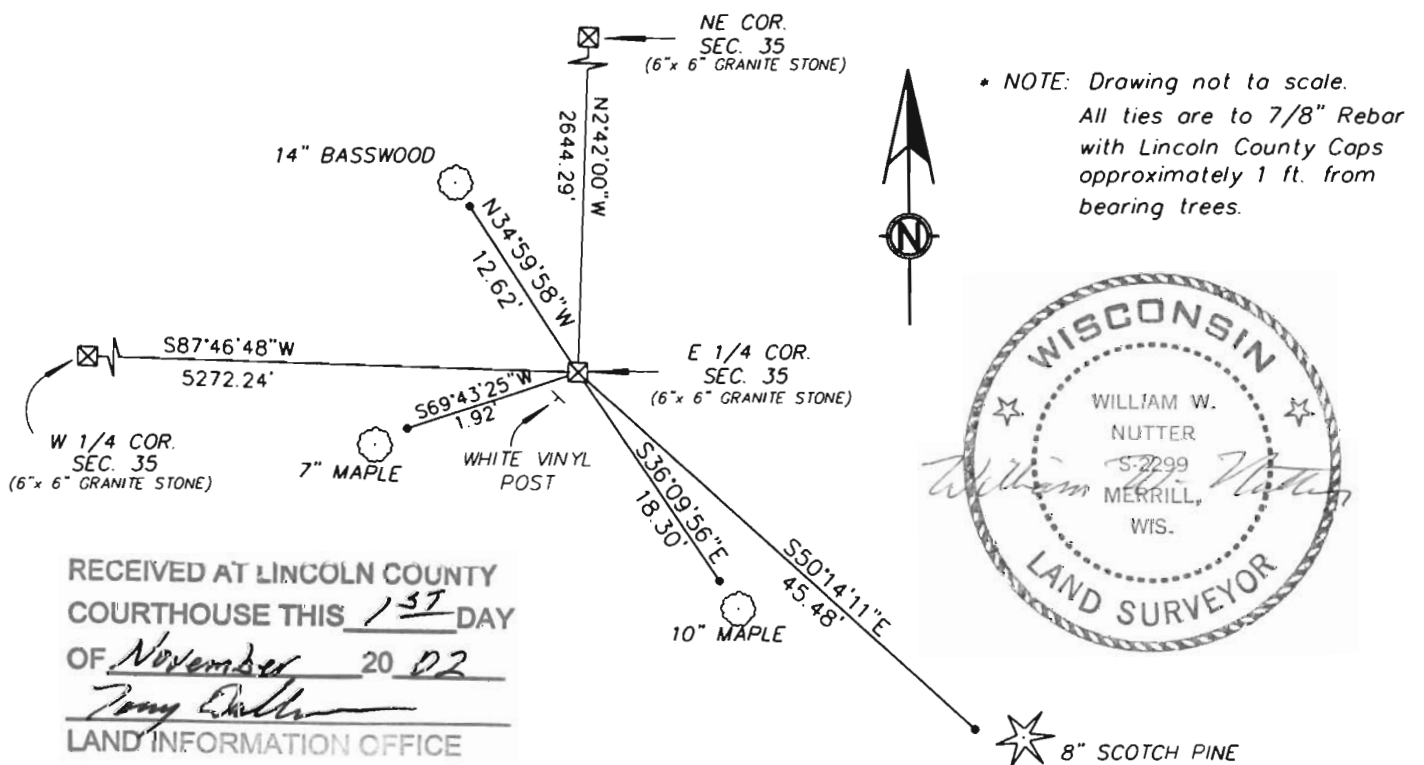
*Originally Surveyed in 1852 by Albert Ellis and Fredrick Ellis. Original corner was a wooden post with bearing trees:
 18" Birch E, 29 lks
 20" Linn Elm S52°W, 6 lks.*

Revisited by Sheridan D. Schwark on November 2, 1980 where he found a 6" x 6" Red Granite Monument with witness to a 7/8" Iron Rod N48°E, 22.34 feet; a P.K. nail in a 30" Pine S14°W, 23.75 feet; and also a 3/4" x Iron Rod N32°W, 13.89 feet.

Description of corner evidence found:

We found the 6" x 6" Red Granite Stone along an old downed North-South fenceline and a downed East fenceline. We accepted this position and tied to 7/8" Rebars with Lincoln County Caps.

(c) (d) (e) Plan view of corner with ties to at least 4 witness monuments. If in disagreement with previously established corner, show the distances between the two corners and also indicate the ties to the disputed corner.



RECEIVED AT LINCOLN COUNTY
 COURTHOUSE THIS 137 DAY
 OF November 20 02
Tony Diller
 LAND INFORMATION OFFICE

(l) I, William W. Nutter RLS, S-2299
 (type or print name) certify that the corner location on this record was determined by me or under my direction and control and that this U.S. Public Land Survey Monument Record is correct and complete to the best of my knowledge and belief.

William W. Nutter RLS
 Signature

10-24-2002
 Date

CERTIFIED LAND CORNER RESTORATION

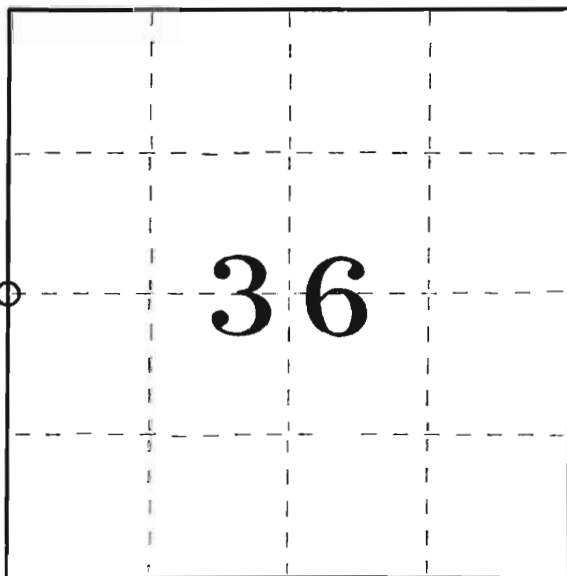
Index No. W-21

State of Wisconsin }
County of Lincoln } ss.

I Sheridan D. Schwark, do hereby certify that on the 2nd day of November, 1980, I found evidence of the West one-quarter corner of Section 36 Township 31, North, Range 7 East, Fourth, Principal Meridian, as described hereon; and that from this evidence I established a new monument and accessories as described hereon to perpetuate the original location of this corner.

Resident witnesses:

.....
.....
.....



○ = Corner monument restored.

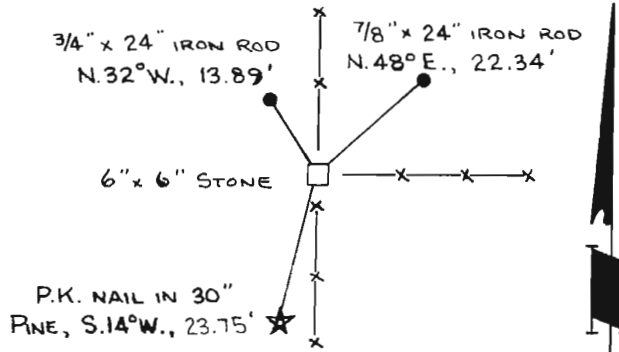
History of original corner establishment:

Wood post set by original Government Surveyor

Description of corner evidence found:

We found a 6" x 6" red granite monument at the intersection of a North-South fenceline and a fenceline running East. The stone was slightly tipped, therefore we straightened it and set the following references.

Description of monument and accessories I established to perpetuate the original location of this corner.



Dated at Merrill, Wis., this 26th day of November, 1980.

Signature Sheridan D. Schwark Title Registered Land Surveyor Registration No. S-1205
(County Surveyor, Registered Land Surveyor, or other duly authorized official)

Office of Register of Deeds, County of _____, I hereby certify that the within instrument was filed in this office for record on the _____ day of _____, 19____ at _____ o'clock _____ M.

.....
(Register of Deeds)

By _____ Deputy





