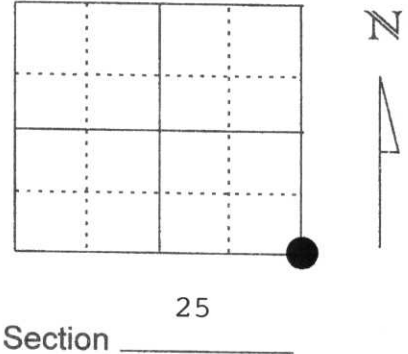


U.S. PUBLIC LAND SURVEY MONUMENT RECORD

Note: This form is intended and designed to fulfill all requirements of Wisconsin Administrative Code, Chapter A-E 5.02, U.S. Public Land Survey Monument Record (3) (a) (b) (c) (d) (e) (f) (g) (h) (i). An additional sheet may be added if necessary to conform with said requirements.

(a) Corner location: Township 31 North
 Range 7 East
 Town/City/Village TN. PINE RIVER
 County Lincoln



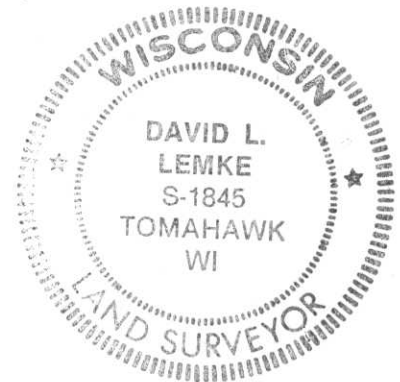
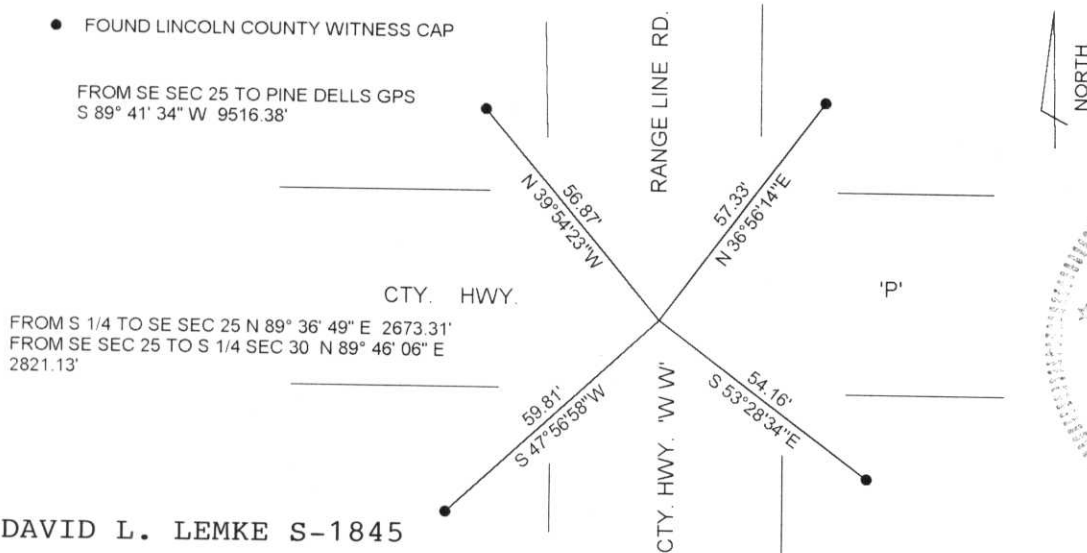
(b) (f) (g) (h) Description of monument found at this corner and if it was accepted, state all evidence (material, testimonial, occupational, plats, records, other monuments) used as a basis for accepting. If not accepted or if nothing was found, state evidence used as basis for establishing location. If reestablished through lost corner proportionate methods, indicate all monuments, distances and directions used to establish.

AUGUST 1995 GARY KRUEGER RECOVERED A GRANITE STONE. ESTABLISHED 4 WITNESS TIES TO THE CORNER POSITION. TIE SHEET FILED 8/20/95

MAY 1998 I FOUND THE 4 WITNESS MONUMENTS SET TO THE CORNER POSITION IN GOOD CONDITION.

RECEIVED AT LINCOLN COUNTY
 COURTHOUSE THIS 3rd DAY
 OF June 1998
Pat Driebe
 TAX DESCRIPTION OFFICE

(c) (d) (e) Plan view of corner with ties to at least 4 witness monuments. If in disagreement with previously established corner, show the distances between the two corners and also indicate the ties to the disputed corner.



(I) I, DAVID L. LEMKE S-1845
 (type or print name) certify that the corner location on this record was determined by me or under my direction and control and that this U.S. Public Land Survey Monument Record is correct and complete to the best of my knowledge and belief.
 Signature [Signature] Date JUN. 03 1998

Index No. U-25

U.S. PUBLIC LAND SURVEY MONUMENT RECORD

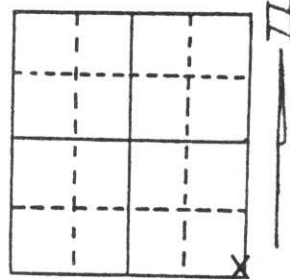
Note: This form is intended and designed to fulfill all requirements of Wisconsin Administrative Code, Chapter A-E 5.02, U.S. Public Land Survey Monument Record (3) (a) (b) (c) (d) (e) (f) (g) (h) (i). An additional sheet may be added if necessary to conform with said requirements.

(a) Corner location: Township 31 North

Range 7 East

Town/City/Village [REDACTED] PINE RIVER

County LINCOLN



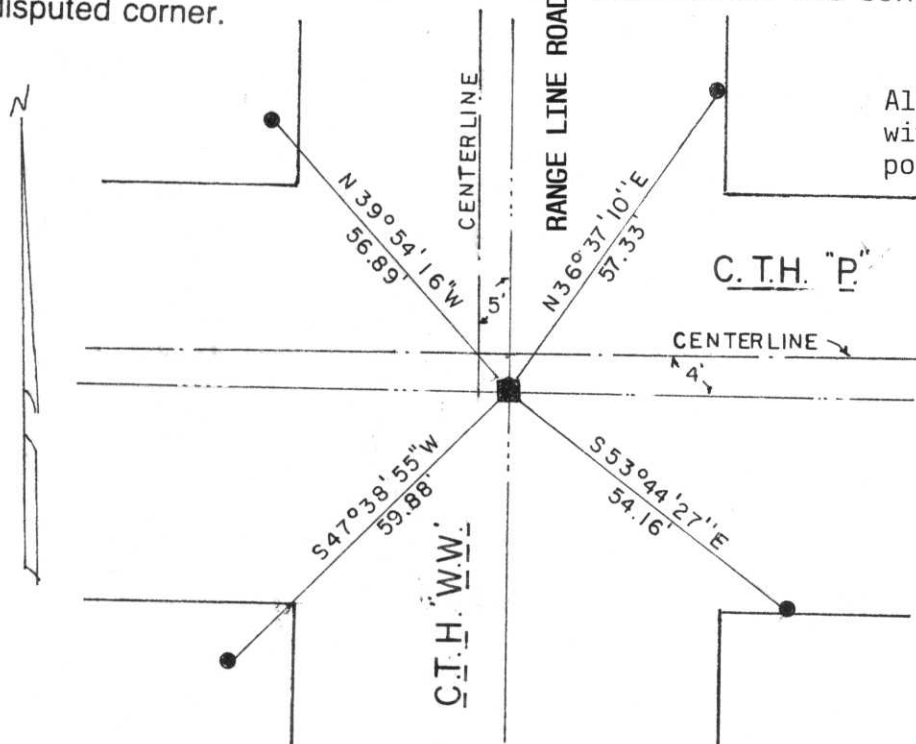
Section 25

(b) (f) (g) (h) Description of monument found at this corner and if it was accepted, state all evidence (material, testimonial, occupational, plats, records, other monuments) used as a basis for accepting. If not accepted or if nothing was found, state evidence used as basis for establishing location. If reestablished through lost corner proportionate methods, indicate all monuments, distances and directions used to establish.

Dug with backhoe and found the Granite Stone Monument below the asphalt surface but not on the centerlines of the roads.

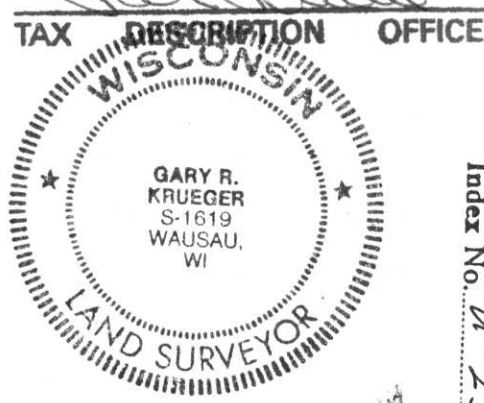
Set 7/8" x 24" Iron Re-bar alongside the North side of Monument

(c) (d) (e) Plan view of corner with ties to at least 4 witness monuments. If in disagreement with previously established corner, show the distances between the two corners and also indicate the ties to the disputed corner.



All ties to 7/8" x 30" Iron Re-bars with caps. Special County Witness post put alongside the tie to the Southeast. Others have lath with Witness Corner written on them alongside.
 From SE Cor. to E 1/4 Cor.
 N 0° 49' 07" W, 2644.04'
 From SE Cor. to S 1/4 Cor.
 S 89° 18' 03" W, 2673.31'

RECEIVED AT LINCOLN COUNTY COURTHOUSE THIS 22 DAY OF August 1995



(i) I, Gary R. Krueger RLS NO.1619
 (type or print name) certify that the corner location on this record was determined by me or under my direction and control and that this U.S. Public Land Survey Monument Record is correct and complete to the best of my knowledge and belief.

Gary R. Krueger Signature 8-20-95 Date

Index No. 11-25