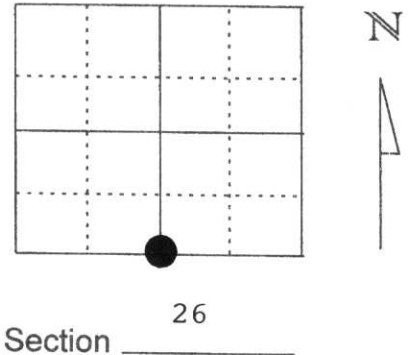


# U.S. PUBLIC LAND SURVEY MONUMENT RECORD

Note: This form is intended and designed to fulfill all requirements of Wisconsin Administrative Code, Chapter A-E 5.02, U.S. Public Land Survey Monument Record (3) (a) (b) (c) (d) (e) (f) (g) (h) (l). An additional sheet may be added if necessary to conform with said requirements.

(a) Corner location: Township 31 North  
 Range 7 East  
 Town/City/Village TN. PINE RIVER  
 County Lincoln

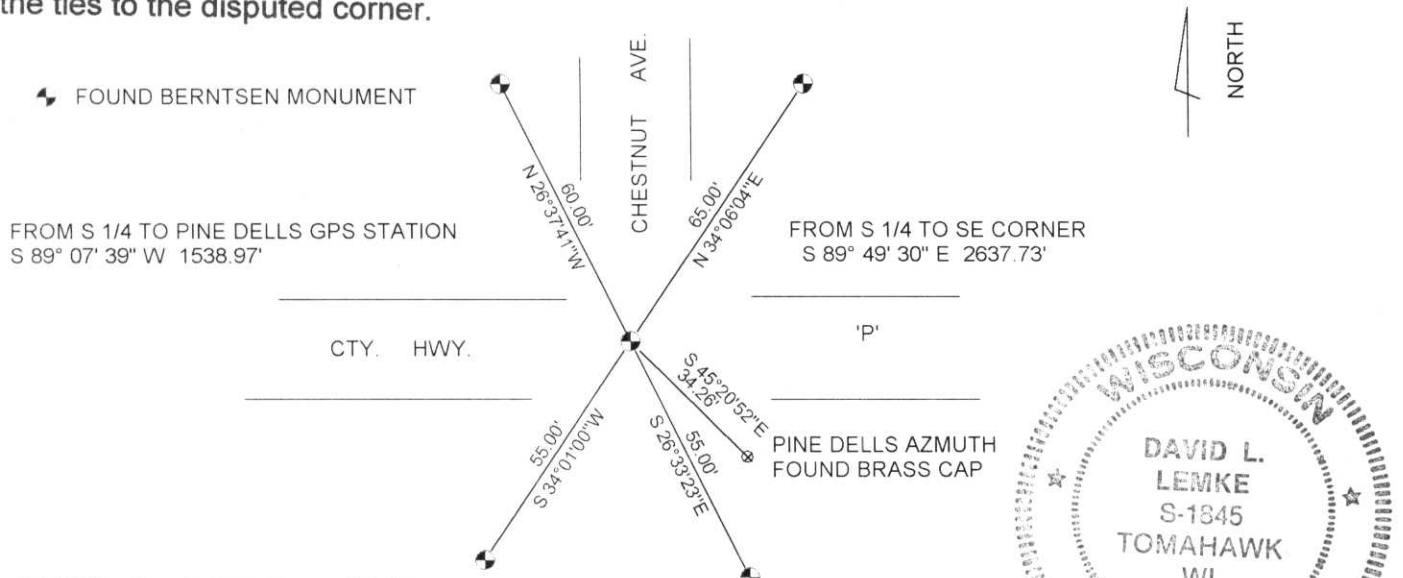


(b) (f) (g) (h) Description of monument found at this corner and if it was accepted, state all evidence (material, testimonial, occupational, plats, records, other monuments) used as a basis for accepting. If not accepted or if nothing was found, state evidence used as basis for establishing location. If reestablished through lost corner proportionate methods, indicate all monuments, distances and directions used to establish.

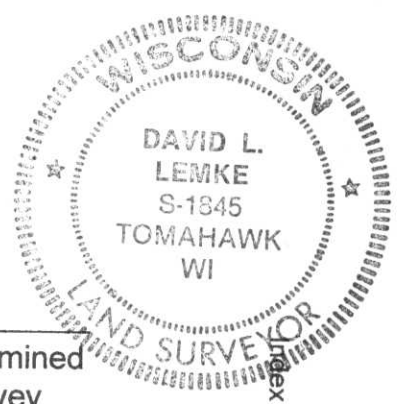
OCTOBER 1974 FRANCIS FOX RECOVERED A GRANITE STONE. AN ALUMINUM MONUMENT WAS RESET AT THE CORNER POSITION AND 4 WITNESS MONUMENTS ESTABLISHED.  
 MAY 1998 I FOUND ALL MONUMENTS SET BY FOX IN GOOD CONDITION.

RECEIVED AT LINCOLN COUNTY  
 COURTHOUSE THIS 3rd DAY  
 OF June 1998  
*Pat Prober*  
 TAX DESCRIPTION OFFICE

(c) (d) (e) Plan view of corner with ties to at least 4 witness monuments. If in disagreement with previously established corner, show the distances between the two corners and also indicate the ties to the disputed corner.



(l) I, DAVID L. LEMKE S-1845  
 (type or print name) certify that the corner location on this record was determined by me or under my direction and control and that this U.S. Public Land Survey Monument Record is correct and complete to the best of my knowledge and belief.  
 Signature *David L. Lemke* Date JUN. 03 1998



Index No. U-19

CERTIFIED LAND CORNER RESTORATION

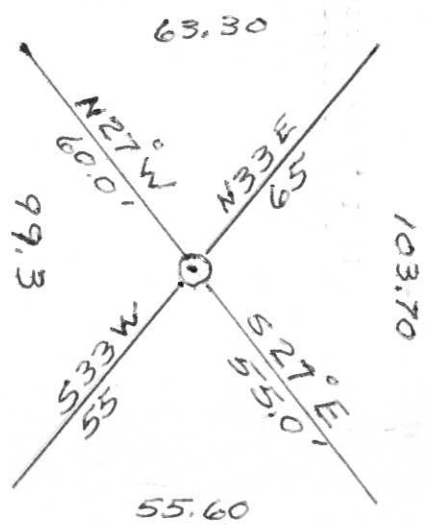
Index No. U-19

State of Wisconsin }  
County of LINCOLN } ss.

History of original corner establishment:  
OLD GRANITE STONE

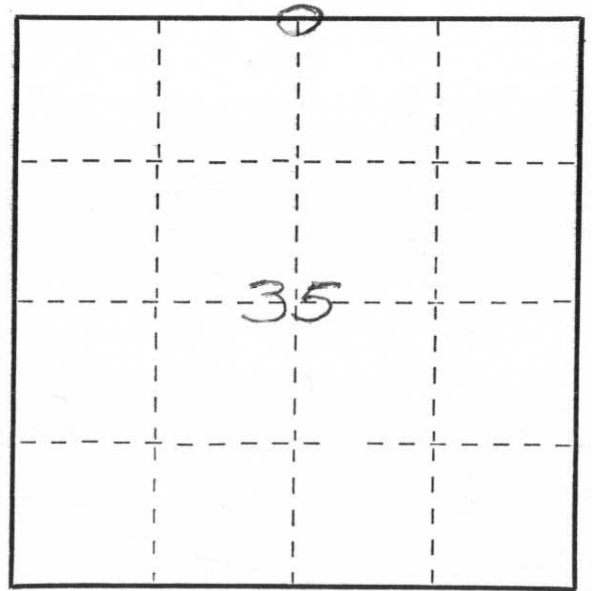
I FRANCIS X. FOX do hereby certify that on the 31<sup>ST</sup> day of OCTOBER, 1974, I found evidence of the NORTH 1/4 corner of SECTION 35 Township 31, North, Range 7 EAST, Fourth, Principal Meridian, as described hereon; and that from this evidence I established a new monument and accessories as described hereon to perpetuate the original location of this corner.

Description of corner evidence found:  
OLD GRANITE STONE



Resident witnesses:  
.....  
.....  
.....

Description of monument and accessories I established to perpetuate the original location of this corner.  
PLACED STANDARD ALUMINUM CORNER MARKER (WISC. DEPT. OF TRANSPORTATION FURNISHED) IN BLACKTOP SURFACE. PLACED 4 WITNESS MARKERS (LINCOLN COUNTY FURNISHED) AS SHOWN  
CENTER LINE OF HIGHWAY (AS CONSTRUCTED 1974) IS 1.02 NORTH OF CORNER.



○ = Corner monument restored.

Dated at MERRILL, Wis., this 31<sup>ST</sup> day of OCT, 1974.

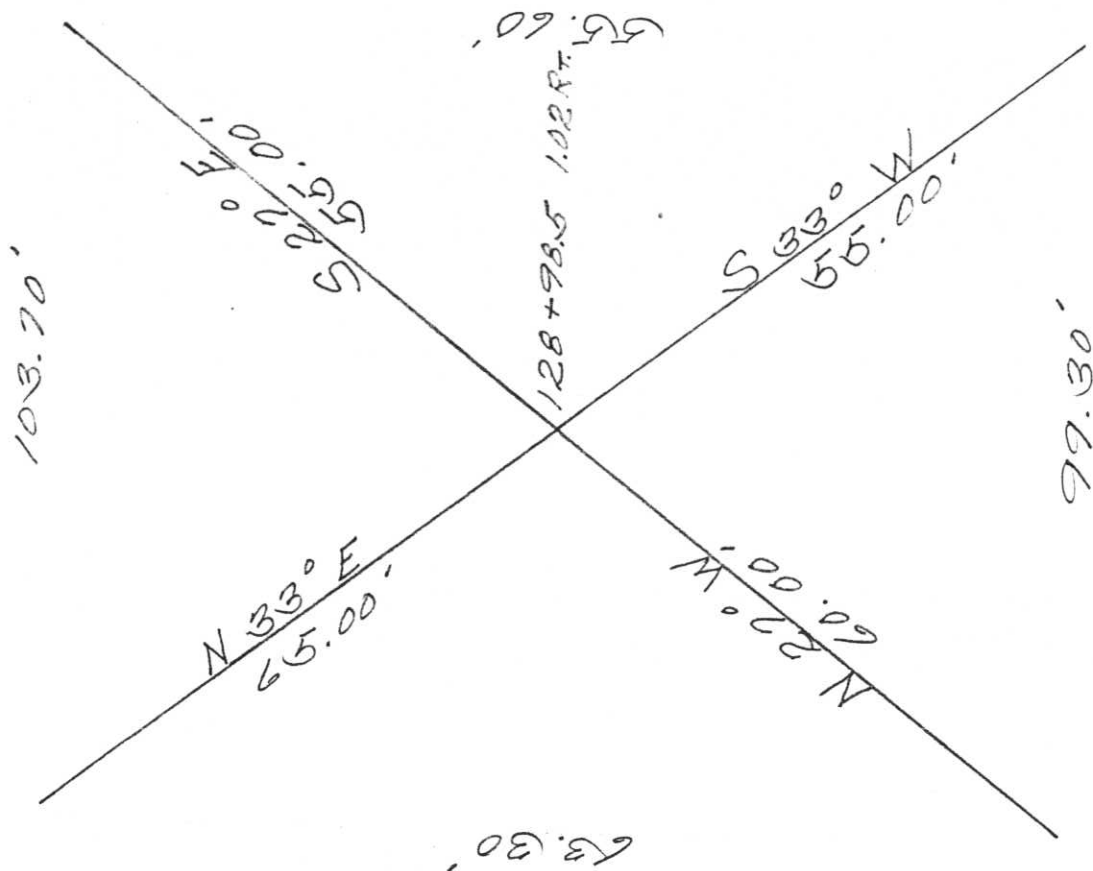
Signature Francis X. Fox Title SURVEYOR Registration No. S 0046  
(County Surveyor, Registered Land Surveyor, or other duly authorized official)

Office of Register of Deeds, County of....., I hereby certify that the within instrument was filed in this office for record on the..... day of....., 19..... at..... o'clock..... M.

.....  
(Register of Deeds)

By..... Deputy

133.



Corner on Navy P

Found by Francis Fox - 1974

61-11

31-7