

U.S. PUBLIC LAND SURVEY MONUMENT RECORD

NOTE: THIS FORM IS INTENDED AND DESIGNED TO FULFILL ALL REQUIREMENTS OF WISCONSIN ADMINISTRATIVE CODE, CHAPTER A-E 7.08, U.S. PUBLIC LAND SURVEY MONUMENT RECORD (3)(a)(b)(c)(d)(e)(f)(g)(h)(i). ADDITIONAL SHEETS MAY BE NECESSARY TO CONFORM TO SAID REQUIREMENTS.

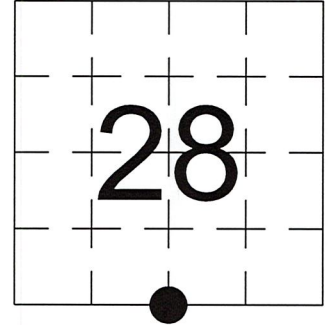
T 31 N, R 7 E

(a) CORNER LOCATION:

SOUTH 1/4 CORNER, SECTION 28
 TOWNSHIP 31 NORTH
 RANGE 7 EAST
 TOWN OF PINE RIVER
 LINCOLN COUNTY
 WISCONSIN

(b) HISTORY OF ORIGINAL CORNER:

ORIGINAL SURVEYOR: See Previous Tie Sheet
 COMMENCING DATE:
 COMPLETION DATE:
 ORIGINAL BEARING TREES:



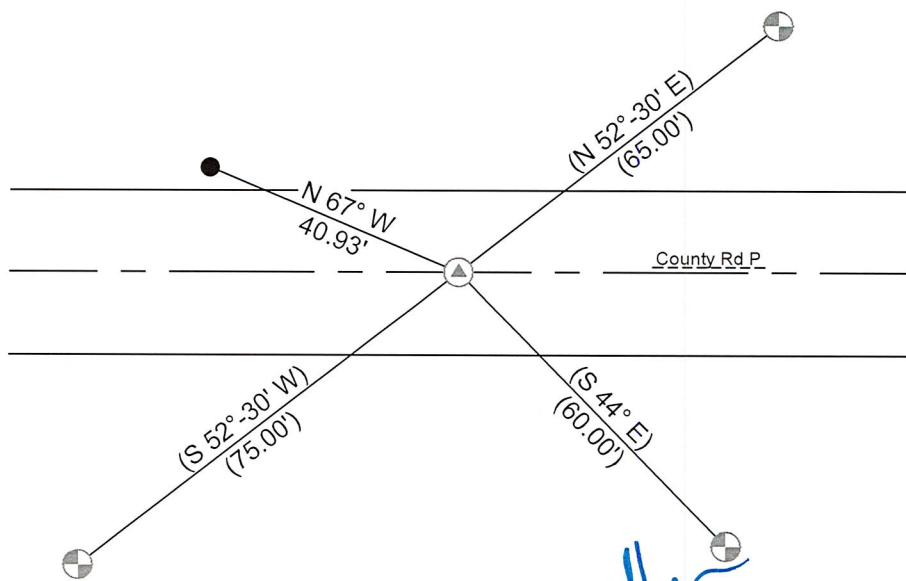
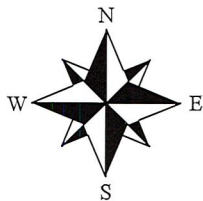
(f)(g)(h) DESCRIPTION OF MONUMENT FOUND AT THIS CORNER AND IF IT WAS ACCEPTED. STATE ALL EVIDENCE (MATERIAL, TESTIMONIAL, OCCUPATIONAL, PLATS, RECORDS, OTHER MONUMENTS) USED AS A BASIS FOR ESTABLISHING LOCATION. IF RE-ESTABLISHING THROUGH LOST CORNER PROPORTIONATE METHODS, INDICATE ALL MONUMENTS, DISTANCES, AND DIRECTIONS USED TO ESTABLISH. INDICATE TYPE OF MONUMENTS FOUND OR SET.

1/07/1974, Arvin Hess, set Brass Cap in Concrete.

10/04/2023, I, Anthony R. Dallman, PLS-2405, found 3 of 4 existing witness monuments that match a PK Nail that is on centerline intersection. I accepted this location and set a witness monument, as shown in the sketch below, to further perpetuate the corner location.

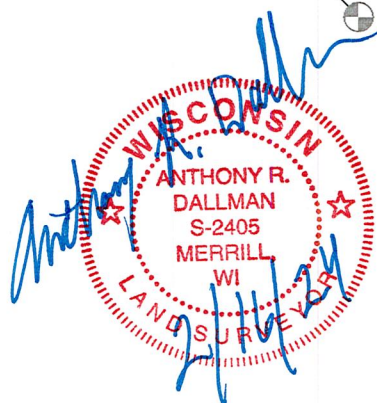
(c)(d)(e) PLAN VIEW OF THE CORNER WITH TIES TO AT LEAST FOUR WITNESSES. IF IN DISAGREEMENT WITH PREVIOUSLY ESTABLISHED CORNER, SHOW THE DISTANCES BETWEEN THE TWO CORNERS AND ALSO THE TIES TO THE DISPUTED CORNER.

- Tie bearings by hand-held compass.
- Tie distances by steel tape.
- Not to scale.



- Berntsen Monument
- Set 3/4" Capped Rebar

I, ANTHONY R. DALLMAN, WISCONSIN PROFESSIONAL LAND SURVEYOR, S-2405, HEREBY CERTIFY THAT THE CORNER LOCATION ON THIS RECORD WAS REFERENCED BY ME OR UNDER MY DIRECTION AND CONTROL AND THAT THIS U.S. PUBLIC LAND SURVEY MONUMENT RECORD IS COMPLETE TO THE BEST OF MY KNOWLEDGE AND BELIEF.



Anthony R. Dallman 02/16/24
 ANTHONY R. DALLMAN, PLS S-2405

INDEX NO. U-11

43107280020

43107280020_Mon-N



43107280020_North



43107280020_West



43107280020_South



43107280020_East

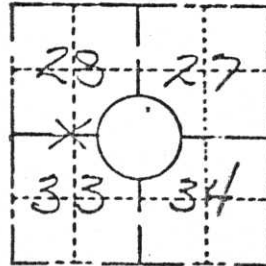


123.

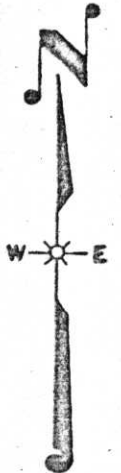
FIELD SURVEY NOTES
PRESERVATION OF LANDMARKS
 (Pursuant to Section 59.635(7) Wisconsin Statutes)

Wisconsin Department of Transportation
 E-D-707-87

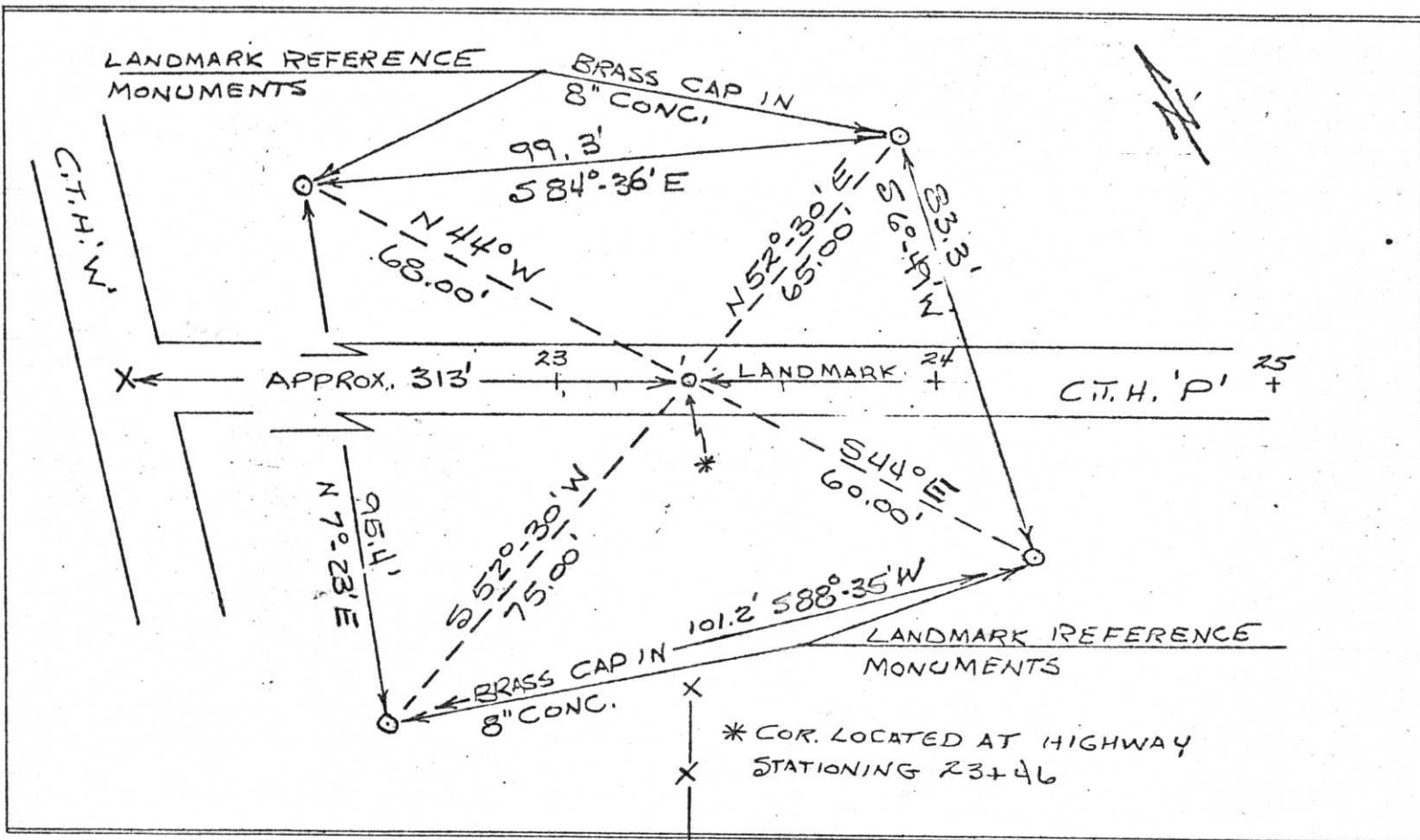
COUNTY LINCOLN		
TOWN PINE RIVER		
HIGHWAY COUNTY TRUNK 'P'		
SECTION 28	TOWNSHIP 31 N	RANGE 7E
TYPE OF LANDMARK BRASS CAP SET IN CONC.		



LOCATION SKETCH
 (Location of landmark indicated by "x")



This space for copy of field notes or ties to the above described landmarks



FILED UNDER PROJECT NUMBER <u>50569(7)</u> <u>9424-1-70</u>			COUNTY CLERK'S OFFICE COUNTY OF _____ WISCONSIN } 59	
SHC DISTRICT OFFICE NUMBER <u>7</u>	CITY <u>RHINELANDER</u>	COUNTY <u>ONEIDA</u>	DATE RECEIVED FOR RECORD <u>1/8/74</u>	DATE COPY SENT TO COUNTY SURVEYOR <u>4/8/74</u>
LOCATED OR ESTABLISHED BY NAME <u>Am. Wiss</u> <u>RCS 50666</u>			SIGNATURE OF COUNTY CLERK <u>Ken Oldenburg</u>	
TITLE <u>Dist. Cons. J. Eng. R.</u> DATE <u>11/7/74</u>				

PRESERVATION OF LANDMARKS

PAGE _____

RECEIVED
 RECORDS DIVISION
 COUNTY CLERK'S OFFICE
 ONEIDA COUNTY
 JAN 11 1974

4-11