

# U.S. PUBLIC LAND SURVEY MONUMENT RECORD

NOTE: THIS FORM IS INTENDED AND DESIGNED TO FULFILL ALL REQUIREMENTS OF WISCONSIN ADMINISTRATIVE CODE, CHAPTER A-E 7.08, U.S. PUBLIC LAND SURVEY MONUMENT RECORD (3)(a)(b)(c)(d)(e)(f)(g)(h)(i). ADDITIONAL SHEETS MAY BE NECESSARY TO CONFORM TO SAID REQUIREMENTS.

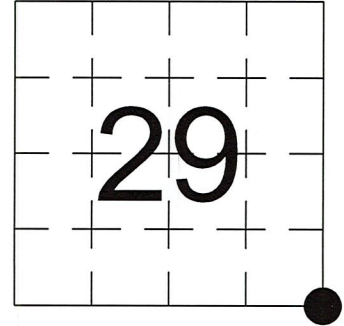
T 31 N, R 7 E

**(a) CORNER LOCATION:**

SOUTHEAST CORNER, SECTION 29  
 TOWNSHIP 31 NORTH  
 RANGE 7 EAST  
 TOWN OF SCOTT  
 LINCOLN COUNTY  
 WISCONSIN

**(b) HISTORY OF ORIGINAL CORNER:**

ORIGINAL SURVEYOR: See Previous Tie Sheet  
 COMMENCING DATE:  
 COMPLETION DATE:  
 ORIGINAL BEARING TREES:



**(f)(g)(h) DESCRIPTION OF MONUMENT FOUND AT THIS CORNER AND IF IT WAS ACCEPTED. STATE ALL EVIDENCE (MATERIAL, TESTIMONIAL, OCCUPATIONAL, PLATS, RECORDS, OTHER MONUMENTS) USED AS A BASIS FOR ESTABLISHING LOCATION. IF RE-ESTABLISHING THROUGH LOST CORNER PROPORTIONATE METHODS, INDICATE ALL MONUMENTS, DISTANCES, AND DIRECTIONS USED TO ESTABLISH. INDICATE TYPE OF MONUMENTS FOUND OR SET.**

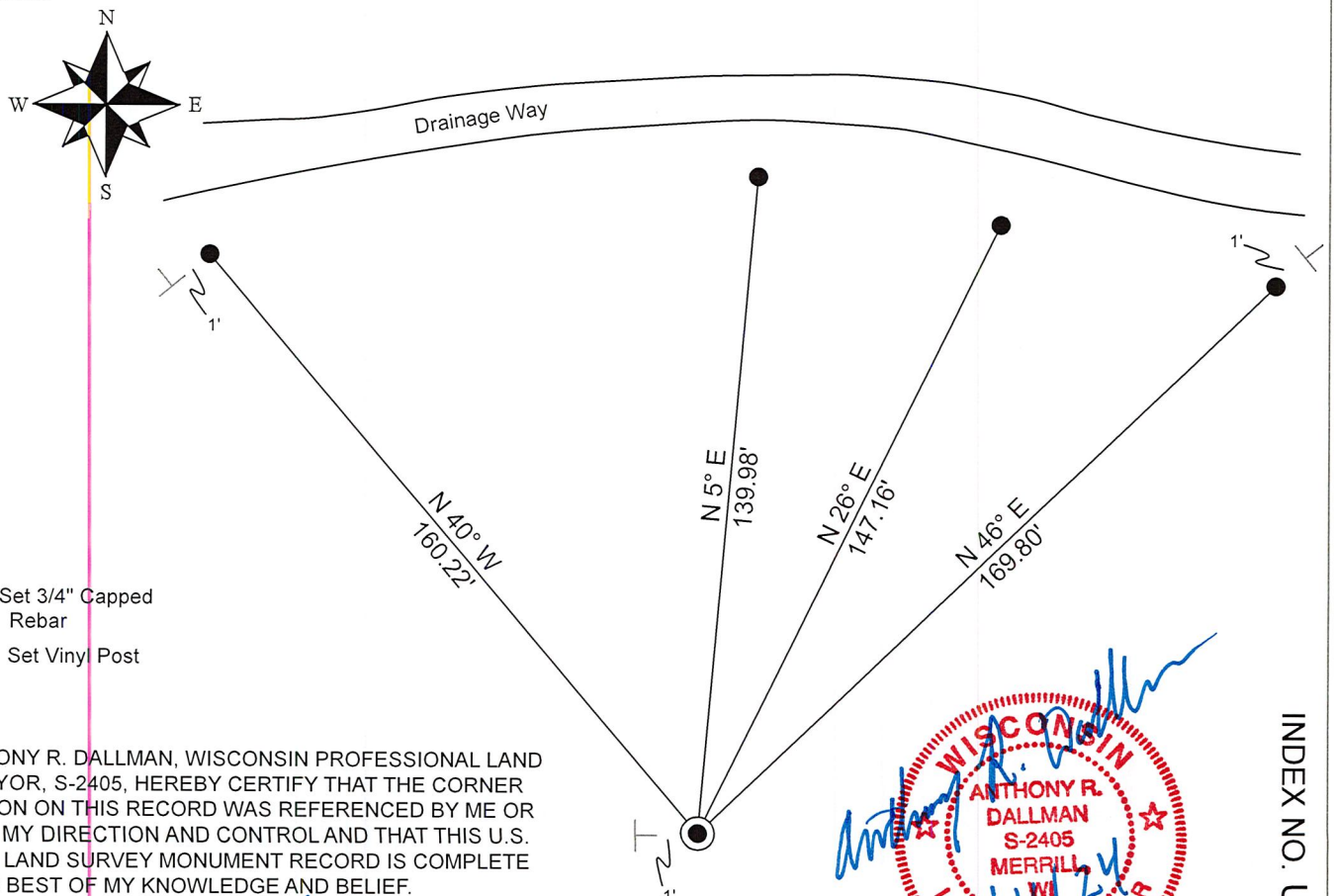
6/01/1970, Wm. Scherer, found a 6" X 6" Stone Monument.

9/22/1992, Keith Vreeland, set a 2" Iron Pipe for Certified Survey Map #668.

10/10/2023, I, Anthony R. Dallman, PLS-2405, found a 2 1/2" O.D. Iron Pipe, up 6". I accepted this location and set witness monuments, as shown in the sketch below, to further perpetuate the corner location.

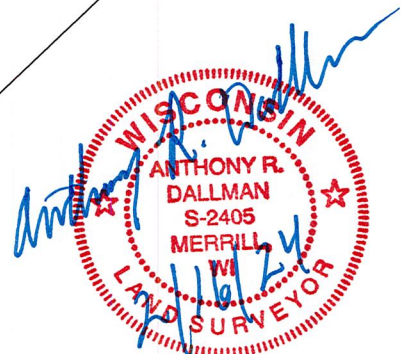
**(c)(d)(e) PLAN VIEW OF THE CORNER WITH TIES TO AT LEAST FOUR WITNESSES. IF IN DISAGREEMENT WITH PREVIOUSLY ESTABLISHED CORNER, SHOW THE DISTANCES BETWEEN THE TWO CORNERS AND ALSO THE TIES TO THE DISPUTED CORNER.**

- Tie bearings by hand-held compass.
- Tie distances by steel tape.
- Not to scale.



I, ANTHONY R. DALLMAN, WISCONSIN PROFESSIONAL LAND SURVEYOR, S-2405, HEREBY CERTIFY THAT THE CORNER LOCATION ON THIS RECORD WAS REFERENCED BY ME OR UNDER MY DIRECTION AND CONTROL AND THAT THIS U.S. PUBLIC LAND SURVEY MONUMENT RECORD IS COMPLETE TO THE BEST OF MY KNOWLEDGE AND BELIEF.

*Anthony R. Dallman* 02/16/24  
 ANTHONY R. DALLMAN, PLS S-2405



INDEX NO. U-09

43107290000

43107290000\_Mon-N



43107290000\_North



43107290000\_West



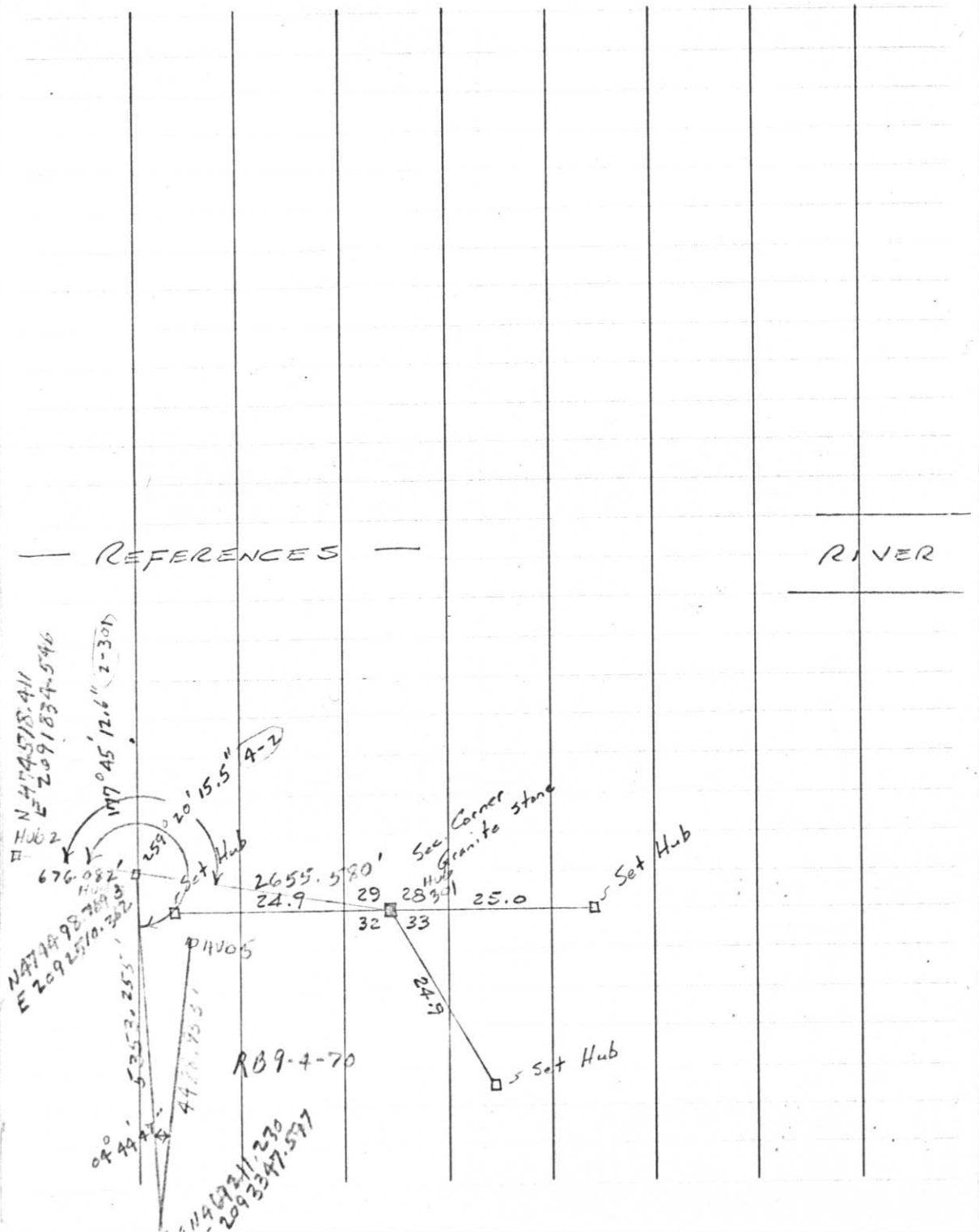
43107290000\_South



43107290000\_East



128.

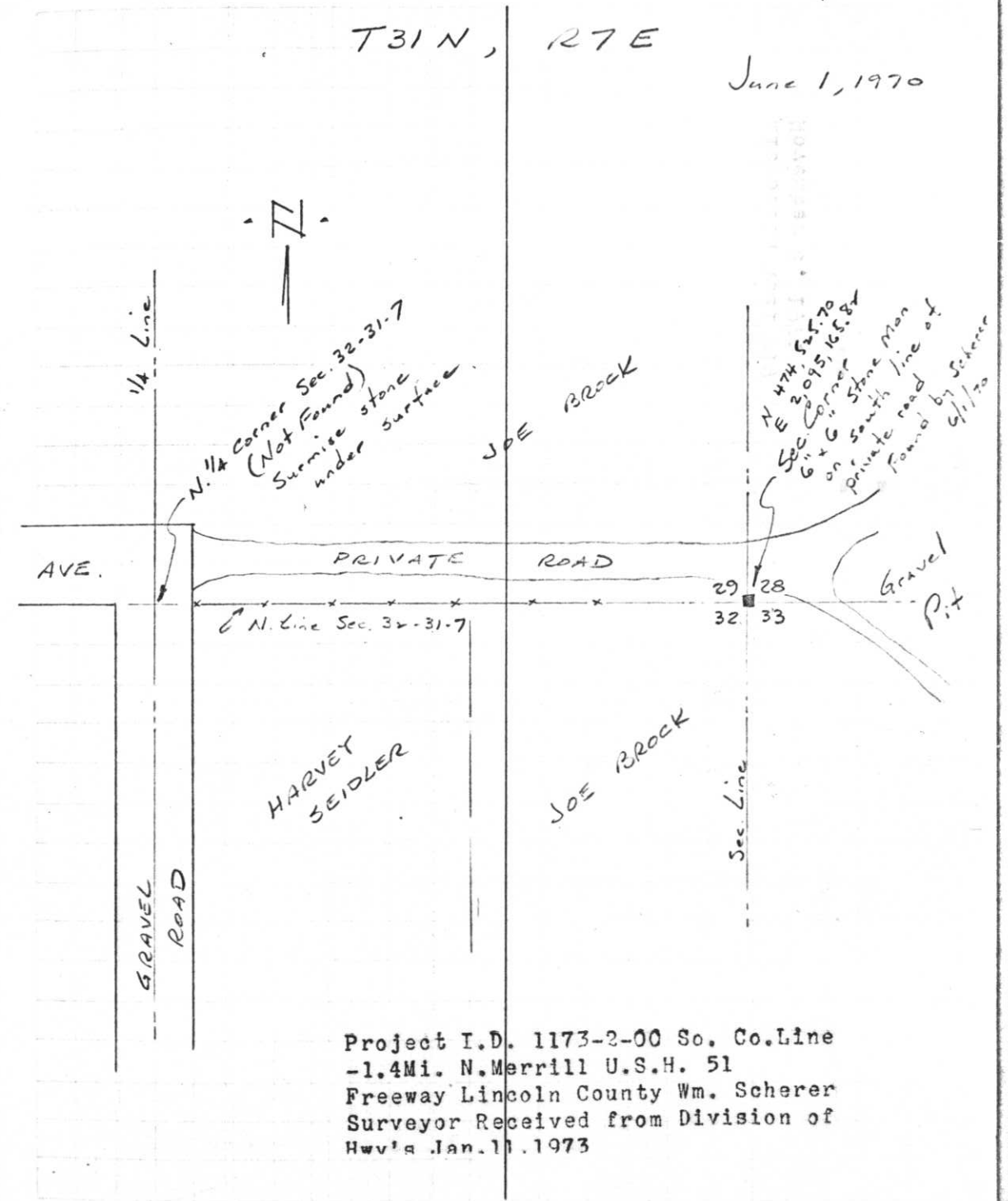


U-9

3.

T31 N, R7 E

June 1, 1970



Project I.D. 1173-2-00 So. Co. Line  
 -1.4 Mi. N. Merrill U.S.H. 51  
 Freeway Lincoln County Wm. Scherer  
 Surveyor Received from Division of  
 Hwy's Jan. 11. 1973