

# U.S. PUBLIC LAND SURVEY MONUMENT RECORD

NOTE: This form is intended and designed to fulfill all requirements of Wisconsin Administrative Code, Chapter A-E 7.08 U.S. Public Land Survey Monument Record. An additional sheet may be added if necessary to conform with said requirements.

**CORNER LOCATION**

Quarter Corner common to Sections 27 and 26  
Township 31 North, Range 7 East of the 4th P.M.  
Town of Pine River, Lincoln County, Wisconsin

6	5	4	3	2	1
7	8	9	10	11	12
18	17	16	15	14	13
19	20	21	22	23	24
30	29	28	27	● 26	25
31	32	33	34	35	36

T31N - R7E

**HISTORY OF ORIGINAL CORNER ESTABLISHMENT**

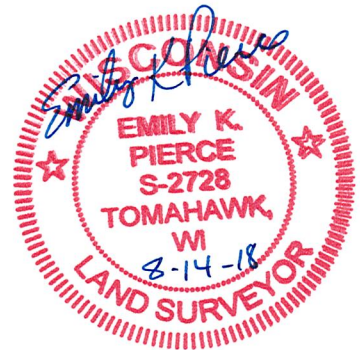
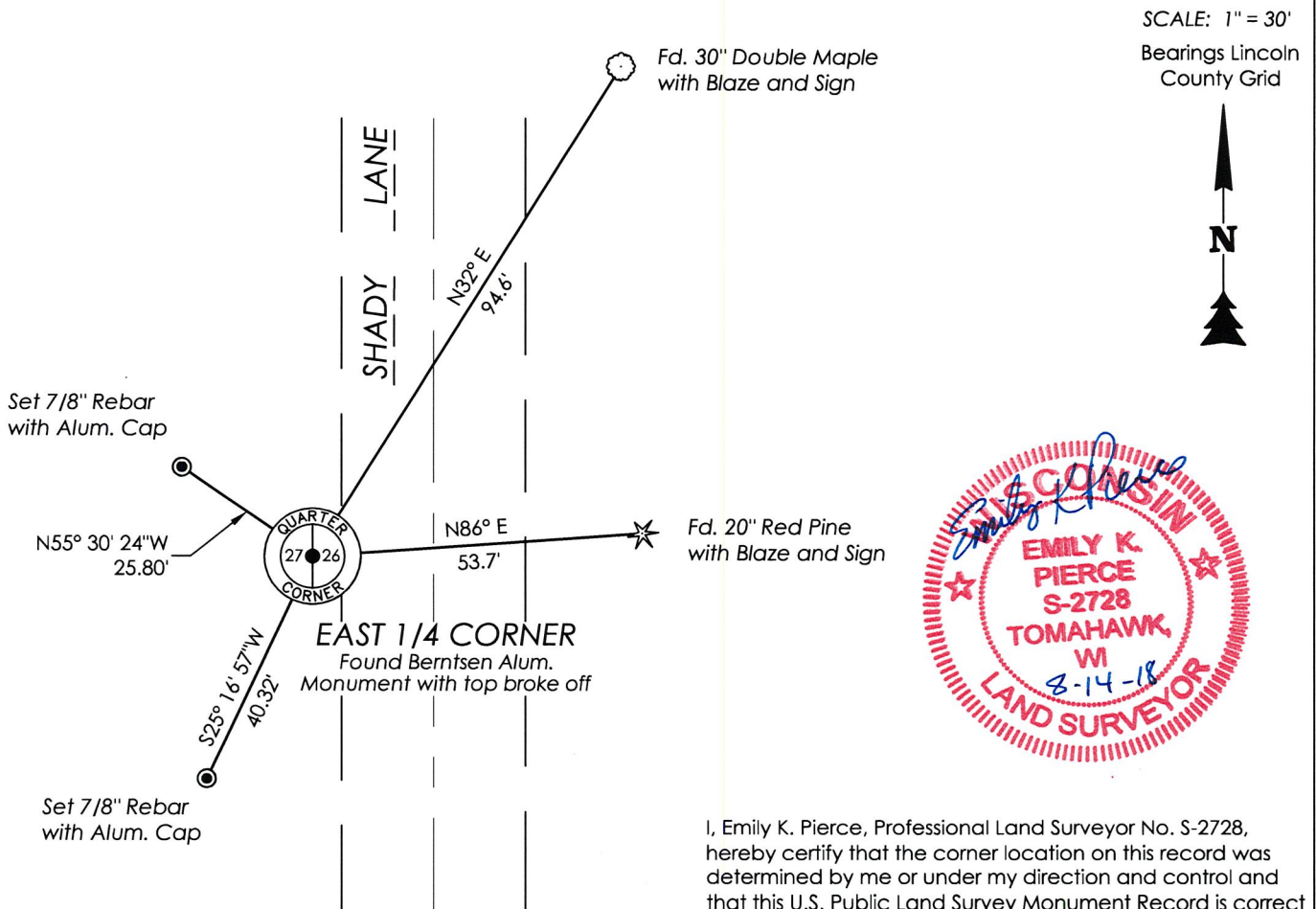
ORIGINAL SURVEYOR: A.G. Ellis and F.S. Ellis  
DATE OF SURVEY: Commenced Feb. 1852, Finished March 1852  
ORIGINAL ACCESSORIES: At 40.0 ch, set post,  
30" Hemlock, S10°W, 43 lks  
12" Sugar, S63°E, 12 lks

DESCRIPTION OF MONUMENT FOUND AT THIS CORNER AND IF IT WAS ACCEPTED, STATE ALL EVIDENCE (MATERIAL, TESTIMONIAL, OCCUPATIONAL, PLATS, RECORDS, OTHER MONUMENTS) USED AS A BASIS FOR ACCEPTING. IF NOT ACCEPTED OR IF NOTHING WAS FOUND, STATE EVIDENCE USED AS BASIS FOR ESTABLISHING LOCATION. IF RE-ESTABLISHED THROUGH LOST CORNER PROPORTIONATE METHODS, INDICATE ALL MONUMENTS, DISTANCES AND DIRECTIONS USED TO ESTABLISH. INDICATE TYPE OF MONUMENT AND SIGN POST FOUND OR SET.

8/28/1985, Sheridan Shwark visited corner location and determined corner to be lost after talking to adjacent landowners and long time residents. Corner location is in a ditch line with a 7-8 foot cut from natural grade. Established corner using a single property procedure from NE and SE corners of Section 27. Set an Aluminum Berntsen Monument at corner location and set 4 ties to perpetuate corner location.

8/02/2018 I visited corner location and found a Berntsen Aluminum Monument with the top broke off at the corner location. I also found two remaining ties to trees on the eastern side of Shady Lane. Both trees had a blaze and yellow metal sign. Set two additional ties to the corner on the western side of the roadway as measured and shown below.

PLAN VIEW OF CORNER WITH TIES TO AT LEAST 4 WITNESS MONUMENTS. IF IN DISAGREEMENT WITH PREVIOUSLY ESTABLISHED CORNER, SHOW THE DISTANCES BETWEEN THE TWO CORNERS AND ALSO INDICATE THE TIES TO THE DISPUTED.



I, Emily K. Pierce, Professional Land Surveyor No. S-2728, hereby certify that the corner location on this record was determined by me or under my direction and control and that this U.S. Public Land Survey Monument Record is correct and complete to the best of my knowledge and belief.

*Emily K. Pierce*

Emily K. Pierce, PLS No. S-2728  
STEIGERWALDT LAND SURVEYING, LLC

RECEIVED BY LINCOLN COUNTY  
SURVEYOR THIS 15<sup>TH</sup> DAY  
OF August 20, 18  
*Tony Dahl*  
COUNTY SURVEYOR

5-17

# U.S. PUBLIC LAND SURVEY MONUMENT RECORD

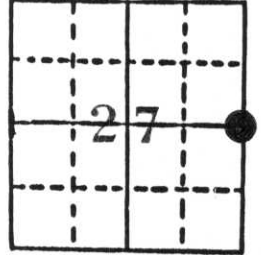
**Note:** This form is intended and designed to fulfill all requirements of Wisconsin Administrative Code, Chapter A-E 5.02, U.S. Public Land Survey Monument Record (3) (a) (b) (c) (d) (e) (f) (g) (h) (i). An additional sheet may be added if necessary to conform with said requirements.

(a) Corner location: Township 31 North

Range 7 East

Town Pine River

County Lincoln

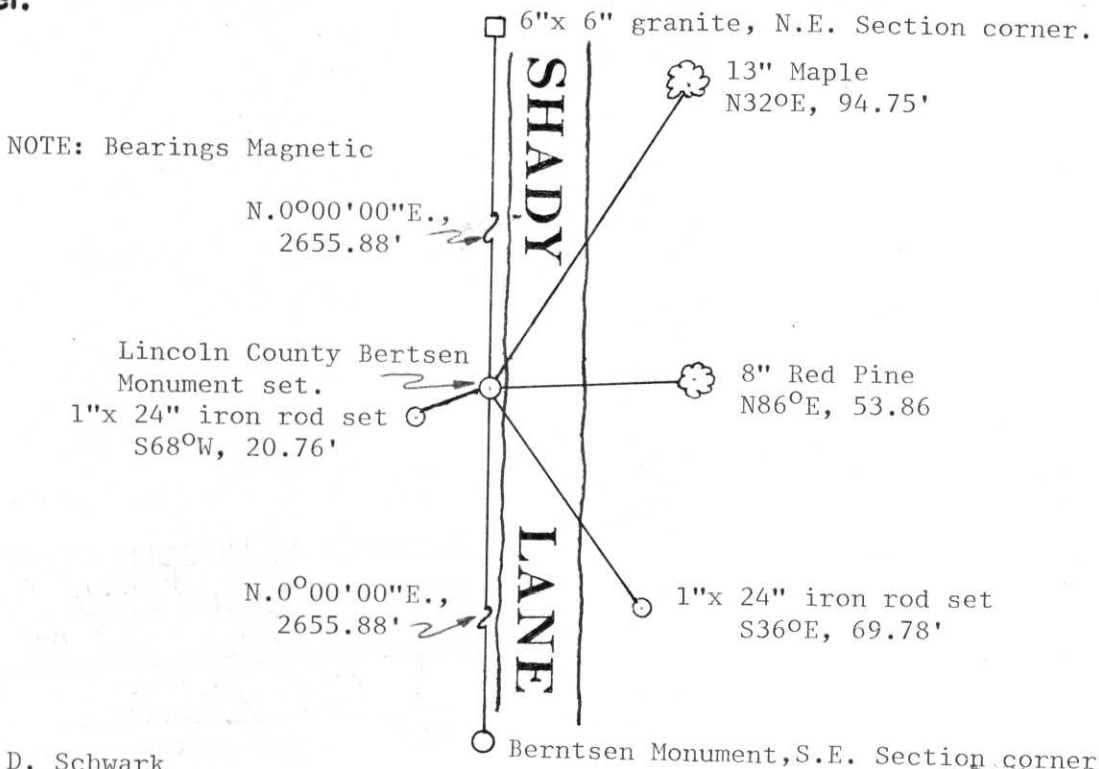


Section 27

**b) (f) (g) (h) Description of monument found at this corner and if it was accepted, state all evidence (material, testimonial, occupational, plats, records, other monuments) used as a basis for accepting. If not accepted or if nothing was found, state evidence used as basis for establishing location. If reestablished through lost corner proportionate methods, indicate all monuments, distances and directions used to establish.**

I determined this corner to be a lost corner after talking to Robert Erikson, George Natzke, and Gerald Degner, all being adjacent landowners and long time residents. None of the previously mentioned gentlemen remembered ever seeing a corner in existence. The area the corner is located is in a ditch line with a 7' to 8' cut from natural grade. I established the corner using the single proportionate procedure. The Northeast corner is an existing 6"x6" granite and the Southeast corner is an Aluminum Berntsen Monument set by the Division of Highways. Distances and Bearings are shown below.

**c) (d) (e) Plan view of corner with ties to at least 4 witness monuments. If in disagreement with previously established corner, show the distances between the two corners and also indicate the ties to the disputed corner.**



(i) I, Sheridan D. Schwark  
 (type or print name) certify that the corner location on this record was determined by me or under my direction and control and that this U.S. Public Land Survey Monument Record is correct and complete to the best of my knowledge and belief.

Sheridan D. Schwark  
 Signature

August 28, 1985  
 Date



Index No. 5-17