

U.S. PUBLIC LAND SURVEY MONUMENT RECORD

NOTE: This form is intended and designed to fulfill all requirements of Wisconsin Administrative Code, Chapter A-E 7.08 U.S. Public Land Survey Monument Record. An additional sheet may be added if necessary to conform with said requirements.

CORNER LOCATION

Quarter Corner common to Sections 27 and 28
Township 31 North, Range 7 East of the 4th P.M.
Town of Pine River, Lincoln County, Wisconsin

6	5	4	3	2	1
7	8	9	10	11	12
18	17	16	15	14	13
19	20	21	22	23	24
30	29	28 ●	27	26	25
31	32	33	34	35	36

T31N - R7E

HISTORY OF ORIGINAL CORNER ESTABLISHMENT

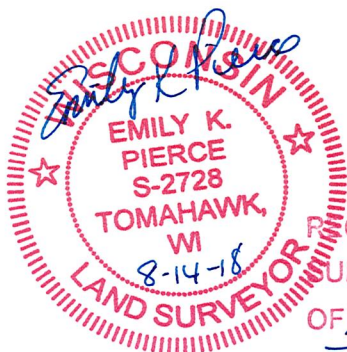
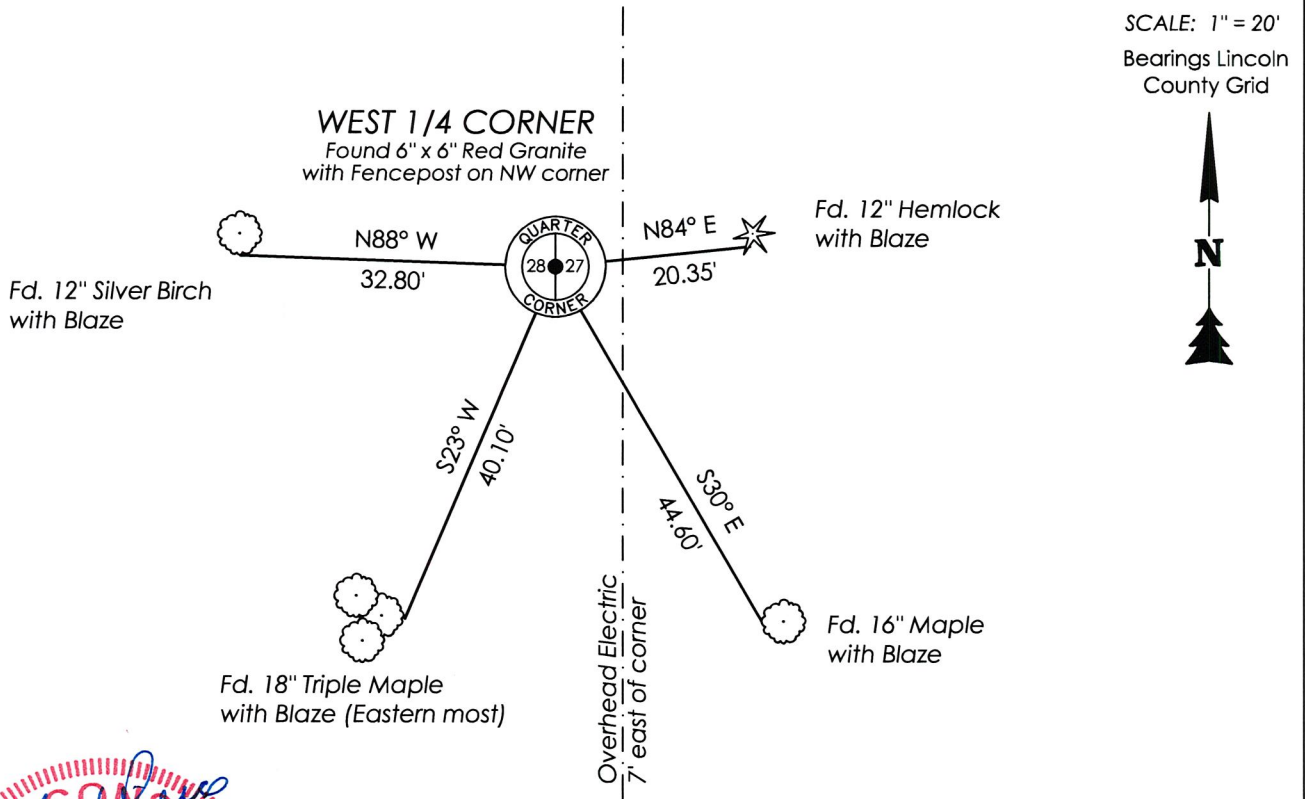
ORIGINAL SURVEYOR: A.G. Ellis and F.S. Ellis
DATE OF SURVEY: Commenced Feb. 1852, Finished March 1852
ORIGINAL ACCESSORIES: At 40.0 ch, set post,
1 1" Birch, N38°W, 3 lks
9" Hemlock, S59°E, 3 lks

DESCRIPTION OF MONUMENT FOUND AT THIS CORNER AND IF IT WAS ACCEPTED, STATE ALL EVIDENCE (MATERIAL, TESTIMONIAL, OCCUPATIONAL, PLATS, RECORDS, OTHER MONUMENTS) USED AS A BASIS FOR ACCEPTING. IF NOT ACCEPTED OR IF NOTHING WAS FOUND, STATE EVIDENCE USED AS BASIS FOR ESTABLISHING LOCATION. IF RE-ESTABLISHED THROUGH LOST CORNER PROPORTIONATE METHODS, INDICATE ALL MONUMENTS, DISTANCES AND DIRECTIONS USED TO ESTABLISH. INDICATE TYPE OF MONUMENT AND SIGN POST FOUND OR SET.

6/03/1985, Sheridan Schwark visited corner location and found a 6" x 6" red granite monument up approximately 1 foot scribed 1/4 S. Established references as shown on previous tie sheet.

8/02/2018 I visited corner location and found 6" x 6" red granite monument as previously called for. Monument had fence post on NW corner of monument. I also found one remaining tie that was shown on 1985 tiesheet (Hemlock). I also found three additional trees with blazes on them facing corner. Unsure if there were blunders on previous tiesheet as some trees matched type but dimensions seemed incorrect, or type didn't match, but dimensions were correct. Measured all existing ties again as shown below. Measurements to center of tree on side.

PLAN VIEW OF CORNER WITH TIES TO AT LEAST 4 WITNESS MONUMENTS. IF IN DISAGREEMENT WITH PREVIOUSLY ESTABLISHED CORNER, SHOW THE DISTANCES BETWEEN THE TWO CORNERS AND ALSO INDICATE THE TIES TO THE DISPUTED.



RECEIVED BY LINCOLN COUNTY
SURVEYOR THIS 15TH DAY
OF August 20 18
Sam Dahl
COUNTY SURVEYOR

I, Emily K. Pierce, Professional Land Surveyor No. S-2728, hereby certify that the corner location on this record was determined by me or under my direction and control and that this U.S. Public Land Survey Monument Record is correct and complete to the best of my knowledge and belief.

Emily K. Pierce
Emily K. Pierce, PLS No. S-2728
STEIGERWALDT LAND SURVEYING, LLC

U.S. PUBLIC LAND SURVEY MONUMENT RECORD

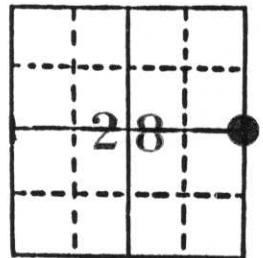
Note: This form is intended and designed to fulfill all requirements of Wisconsin Administrative Code, Chapter A-E 5.02, U.S. Public Land Survey Monument Record (3) (a) (b) (c) (d) (e) (f) (g) (h) (i). An additional sheet may be added if necessary to conform with said requirements.

(a) Corner location: Township 31 North

Range 7 East

Town Pine River

County Lincoln

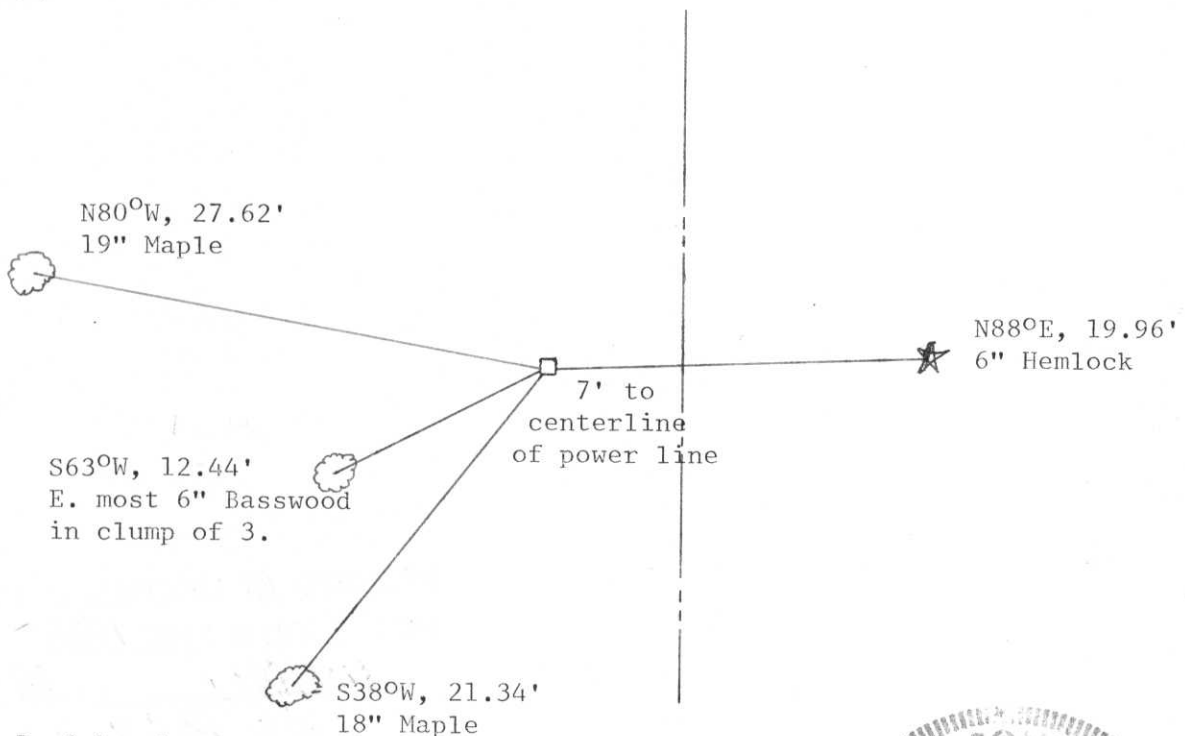


Section 28

b) (f) (g) (h) Description of monument found at this corner and if it was accepted, state all evidence (material, testimonial, occupational, plats, records, other monuments) used as a basis for accepting. If not accepted or if nothing was found, state evidence used as basis for establishing location. If reestablished through lost corner proportionate methods, indicate all monuments, distances and directions used to establish.

We found a 6" x 6" red granite monument up approximately 1' scribed 1/4 S. We established the references as shown below.

c) (d) (e) Plan view of corner with ties to at least 4 witness monuments. If in disagreement with previously established corner, show the distances between the two corners and also indicate the ties to the disputed corner.



(i) I, Sheridan D. Schwark
 (type or print name) certify that the corner location on this record was determined by me or under my direction and control and that this U.S. Public Land Survey Monument Record is correct and complete to the best of my knowledge and belief.

Sheridan D. Schwark June 3, 1985
 Signature Date



Index No. 5-13