

U.S. PUBLIC LAND SURVEY MONUMENT RECORD

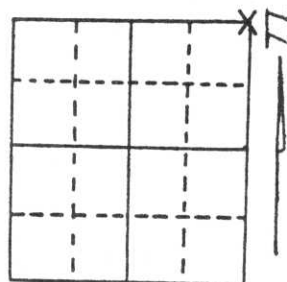
Note: This form is intended and designed to fulfill all requirements of Wisconsin Administrative Code, Chapter A-E 5.02, U.S. Public Land Survey Monument Record (3) (a) (b) (c) (d) (e) (f) (g) (h) (i). An additional sheet may be added if necessary to conform with said requirements.

(a) Corner location: Township 31 North

Range 7 East

Town/City/Village [REDACTED] PINE RIVER

County LINCOLN

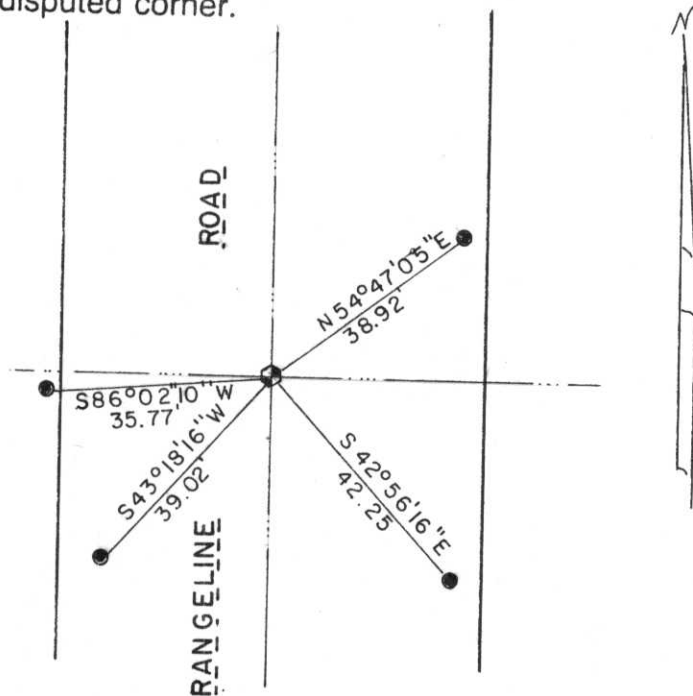


Section 25

(b) (f) (g) (h) Description of monument found at this corner and if it was accepted, state all evidence (material, testimonial, occupational, plats, records, other monuments) used as a basis for accepting. If not accepted or if nothing was found, state evidence used as basis for establishing location. If reestablished through lost corner proportionate methods, indicate all monuments, distances and directions used to establish.

Dug with backhoe and found Granite Stone 3 feet below road surface. Stone was only 16" long but was in a perfect upright position. Tied out and removed to continue to dig. Found no more evidence. Re-placed with a Berntsen Monument.

(c) (d) (e) Plan view of corner with ties to at least 4 witness monuments. If in disagreement with previously established corner, show the distances between the two corners and also indicate the ties to the disputed corner.



All ties to 7/8" x 30" Iron Re-bars with caps. Special County Witness post alongside one of the ties.
 From the NE Cor. to E¹/₄ Cor.
 S0°10'26"W, 2632.53'
 From the NE Cor. to N¹/₄ Cor.
 S89°45'26"W, 2678.60'

RECEIVED AT LINCOLN COUNTY
 COURTHOUSE THIS 22 DAY
 OF August 1995
Pat Reilein
 TAX DESCRIPTION OFFICE

(i) I, Gary R. Krueger RLS NO.1619

(type or print name) certify that the corner location on this record was determined by me or under my direction and control and that this U.S. Public Land Survey Monument Record is correct and complete to the best of my knowledge and belief.

Gary R. Krueger 8-20-95
 Signature Date



Index No. Q-25