

LINCOLN COUNTY U.S. PUBLIC LAND SURVEY MONUMENT LOCATION RECORD

SECTION 20
TOWNSHIP 31 N
RANGE 7 E

Q-9
NO.

LANDMARK BENCHMARK _____

FOUND
SET
RESET
RE-TIED

CORNER IDENTITY: SOUTHEAST CORNER SECTION 20 (STONE)

LINCOLN COUNTY COORDINATE: N: 111026.0990'
E: 407314.2300'

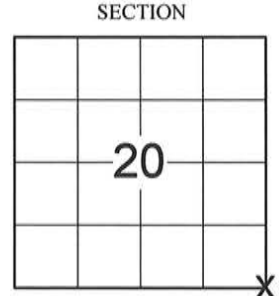
ELEVATION-(FEET): _____ DATUM: _____

WEATHER: OVERCAST AND WINDY

DATE OF SURVEY: 10/17/2014 TEMPERATURE: 50 °F

SURVEY PARTY: CHRIS FIERI

PINE RIVER
CITY, VILLAGE, TOWN



LOCATION
(Indicated By X)



BASIS FOR MONUMENT LOCATION:

(DESCRIBE METHOD OF SURVEY AND CORNER AUTHENTICATION)

5/27/1970 - William Scherer found a stone monument at this corner location while working on Project I.D. 1173-2-00 for U.S.H 51. Set out witnesses to perpetuate the corner.

10/17/2014 - I visited the corner location and recovered the stone monument of record. Searched and found none of the witnesses from the previous corner restoration form. Set four (4) iron bar witness monuments to perpetuate the corner location.

CERTIFIED CORRECT:
Christopher L. Fieri
CHRITOPHER L. FIERI PLS-2954
Registered Land Surveyor
DATE: 10-31-2014

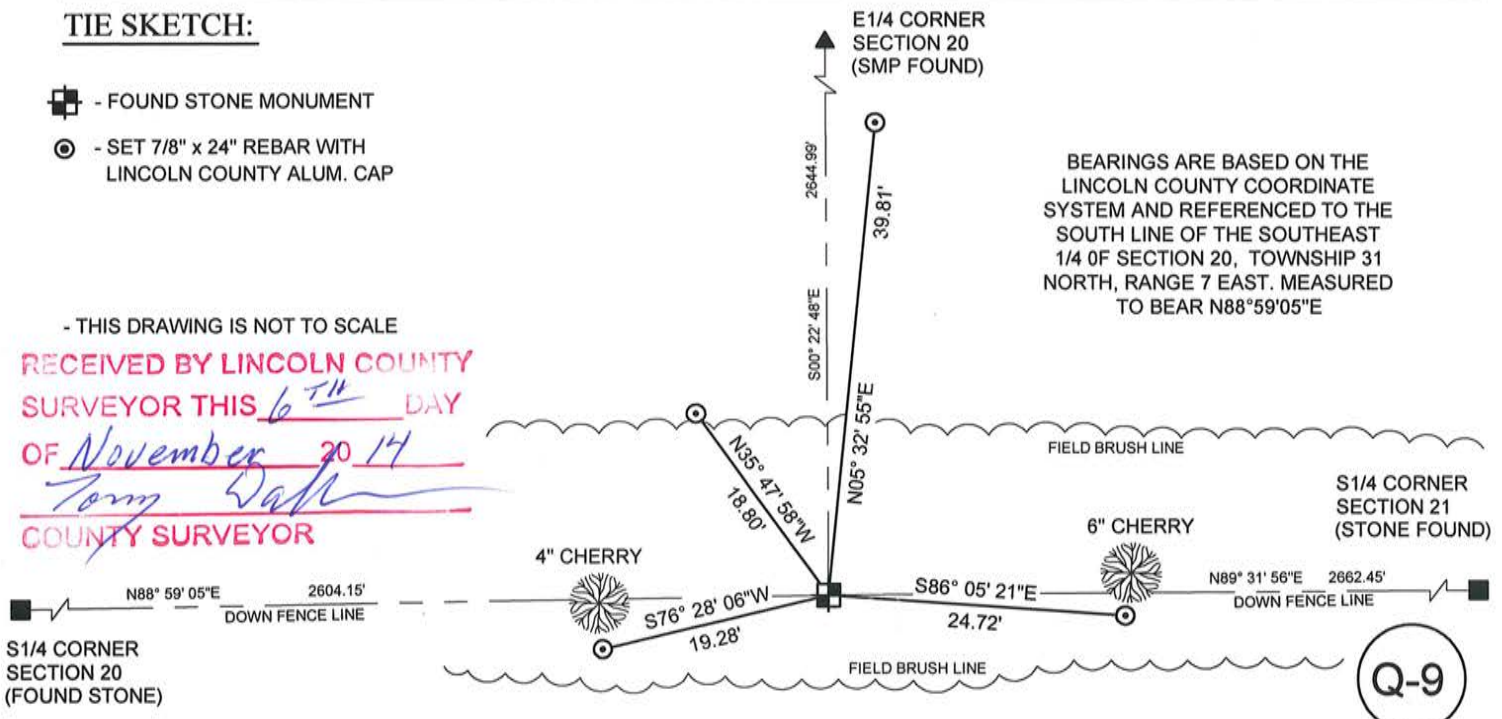
FIELD BOOK NO. 39 PAGE NO. 64
COMPANY RIVERSIDE LAND SURVEYING LLC

TIE SKETCH:

- FOUND STONE MONUMENT
- SET 7/8" x 24" REBAR WITH LINCOLN COUNTY ALUM. CAP

- THIS DRAWING IS NOT TO SCALE

RECEIVED BY LINCOLN COUNTY
SURVEYOR THIS 6TH DAY
OF November 20 14
Tom Dahl
COUNTY SURVEYOR

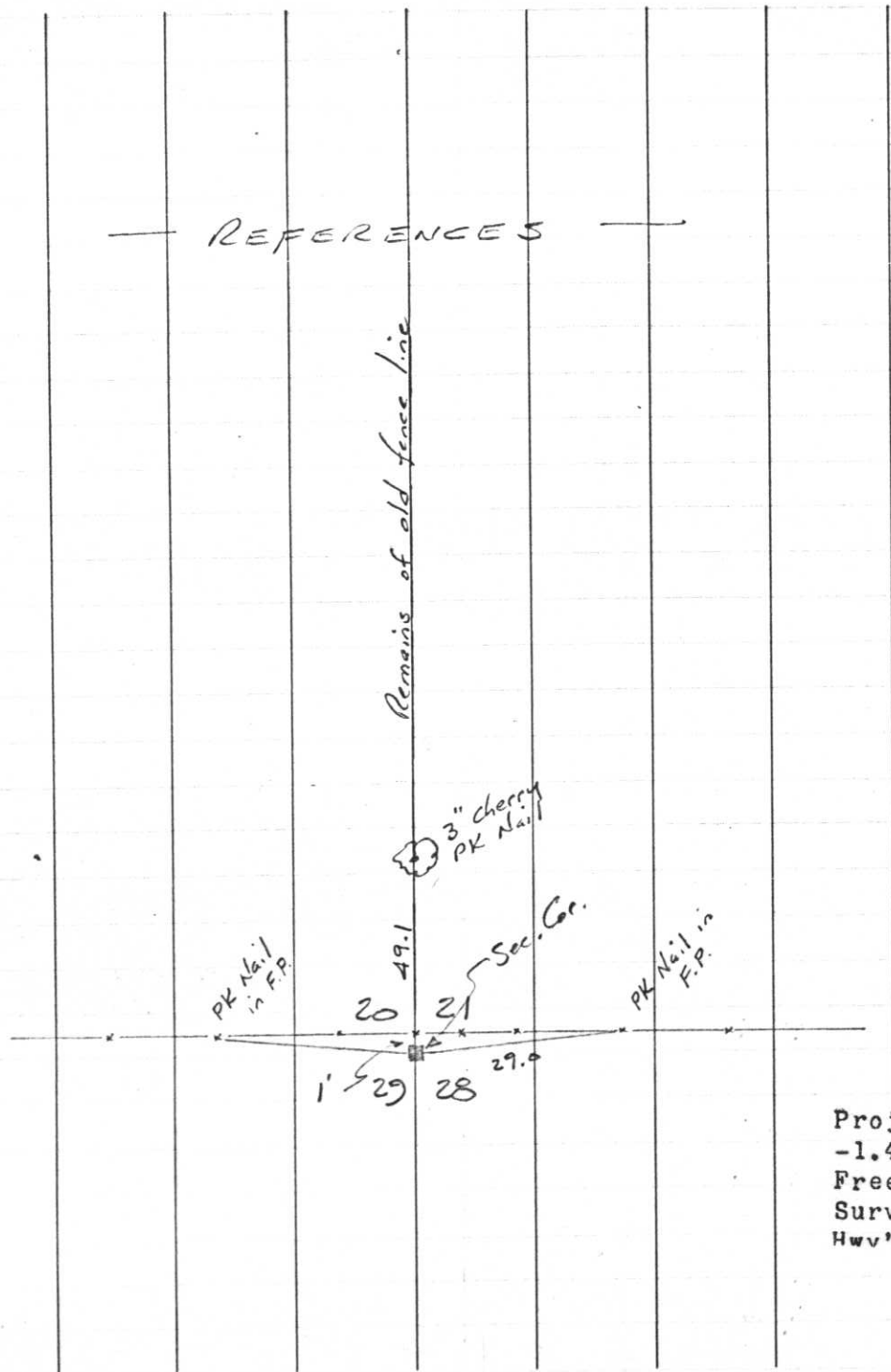


BEARINGS ARE BASED ON THE LINCOLN COUNTY COORDINATE SYSTEM AND REFERENCED TO THE SOUTH LINE OF THE SOUTHEAST 1/4 OF SECTION 20, TOWNSHIP 31 NORTH, RANGE 7 EAST. MEASURED TO BEAR N88°59'05"E

Q-9
NO.

CULTIVATED FIELD

117.

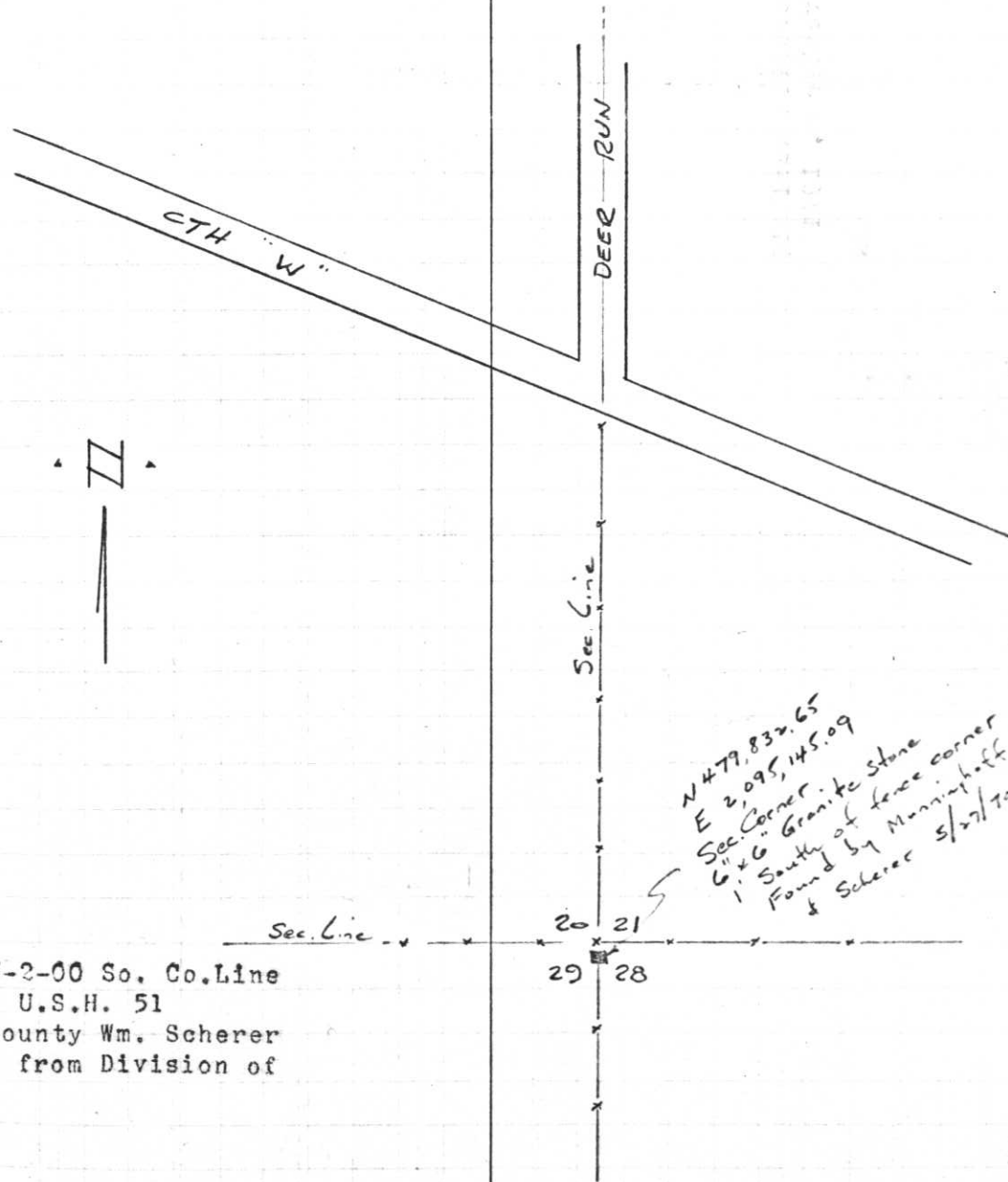


Project I.D. 1173-2-00 So. Co. Line
 -1.4 Mi. N. Merrill U.S.H. 51
 Freeway Lincoln County Wm. Scherer
 Surveyor Received from Division of
 Hwy's Jan. 11. 1973

Q-9 7

T31 N , R7E

May 27, 1970



N 479,832.65
 E 2,095,145.09
 Sec. Corner.
 6" x 6" Granite Stone
 1' South of fence corner
 Found by Manninghoff
 & Scherer 5/27/70