

LINCOLN COUNTY U.S. PUBLIC LAND SURVEY MONUMENT LOCATION RECORD

SECTION 20
TOWNSHIP 31 N
RANGE 7 E

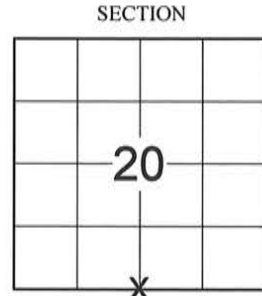
Q-7
NO.

LANDMARK BENCHMARK _____

FOUND
SET
RESET
RE-TIED

PINE RIVER
CITY, VILLAGE, TOWN

CORNER IDENTITY: SOUTHEAST COR. SEC. 20 (STONE MONUMENT)
LINCOLN COUNTY COORDINATE: N: 110979.956
E: 404710.489



ELEVATION-(FEET): _____ DATUM: _____

WEATHER: CLEAR AND SUNNY

DATE OF SURVEY: 10/17/2014 TEMPERATURE: 60 °F

SURVEY PARTY: KEITH WALKOWSKI & CHRIS FIERI

BASIS FOR MONUMENT LOCATION:
(DESCRIBE METHOD OF SURVEY AND CORNER AUTHENTICATION)

5/27/1970 - William Scherer found a stone monument at this corner location while working on Project I.D. 1173-2-00 for U.S.H 51. Set out witnesses to perpetuate the corner.

10/17/2014 - I visited the corner location and recovered the stone monument of record. Searched and found none of the witnesses from the previous corner restoration form. Set four (4) iron bar witness monuments to perpetuate the corner location.

LOCATION
(Indicated By)



FIELD BOOK NO. 39 PAGE NO. 64

COMPANY RIVERSIDE LAND SURVEYING LLC

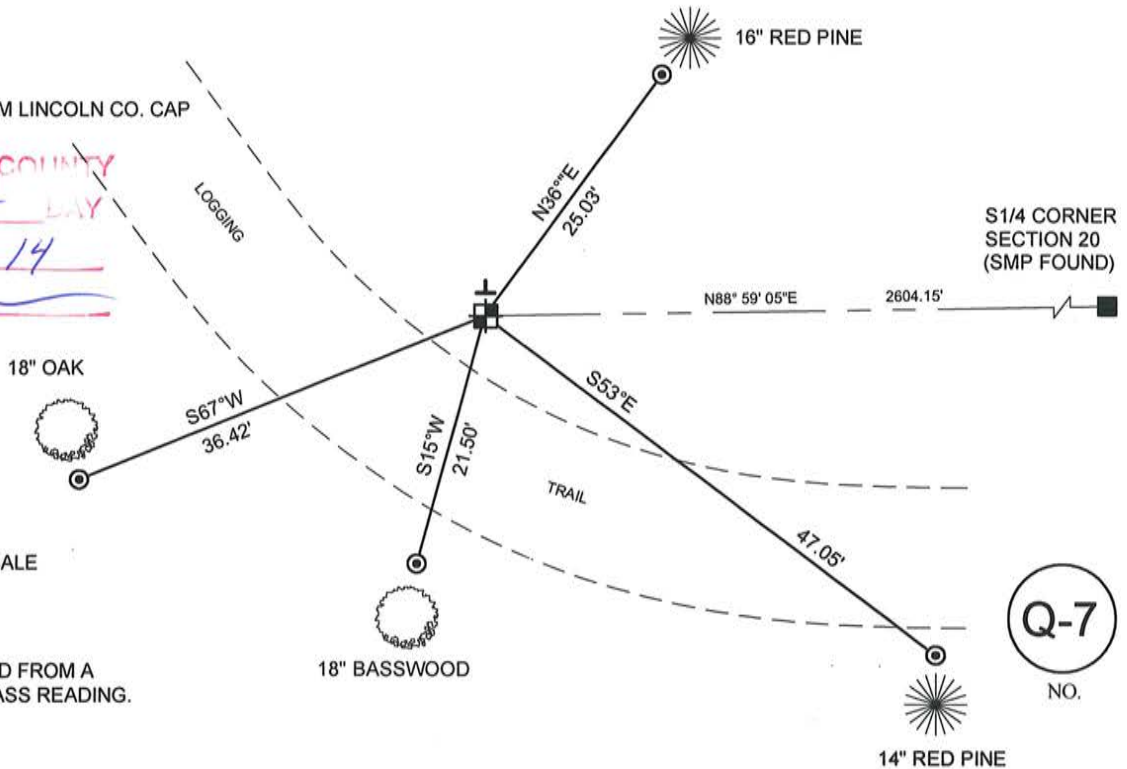
CERTIFIED CORRECT:

Christopher L. Fieri
CHRISTOPHER L. FIERI S-2954
Registered Land Surveyor
DATE: 10-31-2014

TIE SKETCH:

- HARRISON MONUMENT
- SET VINYL T-POST
- SET 7/8" REBAR WITH ALUM LINCOLN CO. CAP

RECEIVED BY LINCOLN COUNTY
SURVEYOR THIS 16TH DAY
OF November 20 14
Tony Dall
COUNTY SURVEYOR

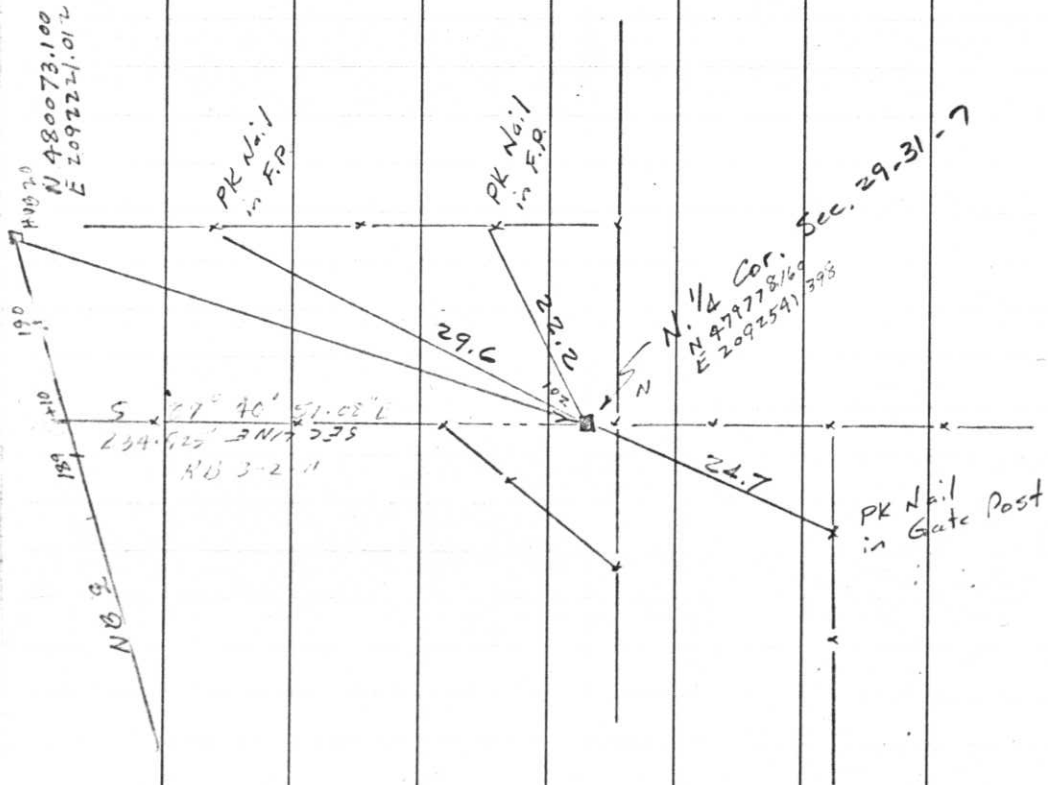


- THIS DRAWING IS NOT TO SCALE

BEARINGS WERE ESTABLISHED FROM A
MAGNETIC HAND HELD COMPASS READING.

Q-7
NO.

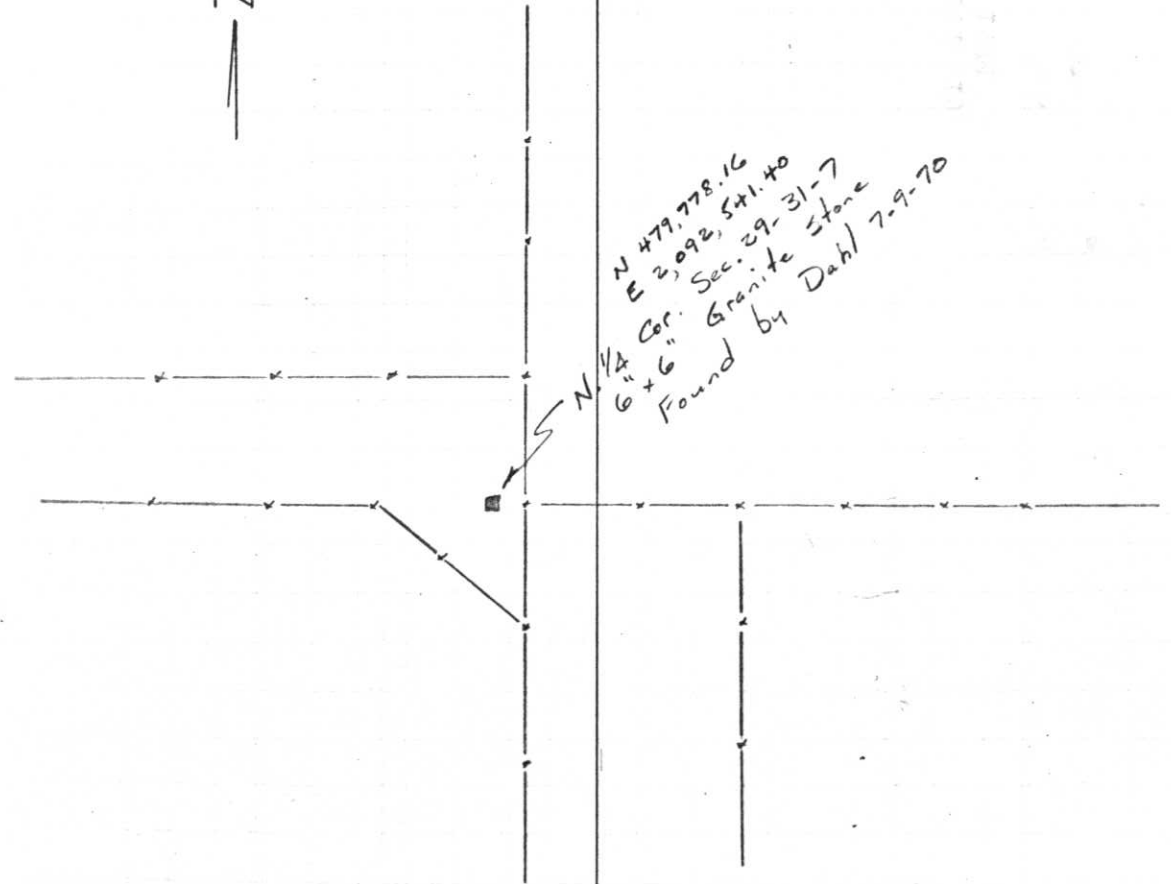
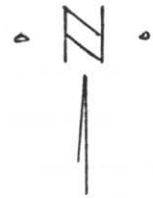
REFERENCES



T 31 N

R 7 E

July 9, 1970



Project I.D. 1173-2-00 So. Co. Line
 -1.4Mi. N. Merrill U.S.H. 51
 Freeway Lincoln County Wm. Scherer
 Surveyor Received from Division of
 Hwy's Jan. 11, 1973