

Attachment to Tie Sheet O-09, T31N, R7E

43107202000

I visited the corner on 10/10/2023 to verify the corner and reference tie monumentation. I found a Berntsen SNM-1 Monument, 4.5' West of centerline, and all 4 of David Goslin's ties(10/31/2001). All ties check well.

Anthony R. Dallman 02/16/24

Anthony R. Dallman, PLS-2405

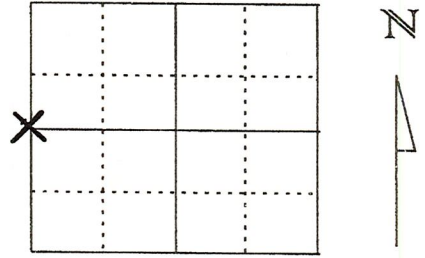
Lincoln County Surveyor



U.S. PUBLIC LAND SURVEY MONUMENT RECORD

Note: This form is intended and designed to fulfill all requirements of Wisconsin Administrative Code, Chapter A-E 5.02, U.S. Public Land Survey Monument Record (3) (a) (b) (c) (d) (e) (f) (g) (h) (i). An additional sheet may be added if necessary to conform with said requirements.

(a) Corner location: Township 31 North
 Range 7 East
 Town/City/Village PINE RIVER
 County Lincoln



Section 21

(b) (f) (g) (h) Description of monument found at this corner and if it was accepted, state all evidence (material, testimonial, occupational, plats, records, other monuments) used as a basis for accepting. If not accepted or if nothing was found, state evidence used as basis for establishing location. If reestablished through lost corner proportionate methods, indicate all monuments, distances and directions used to establish.

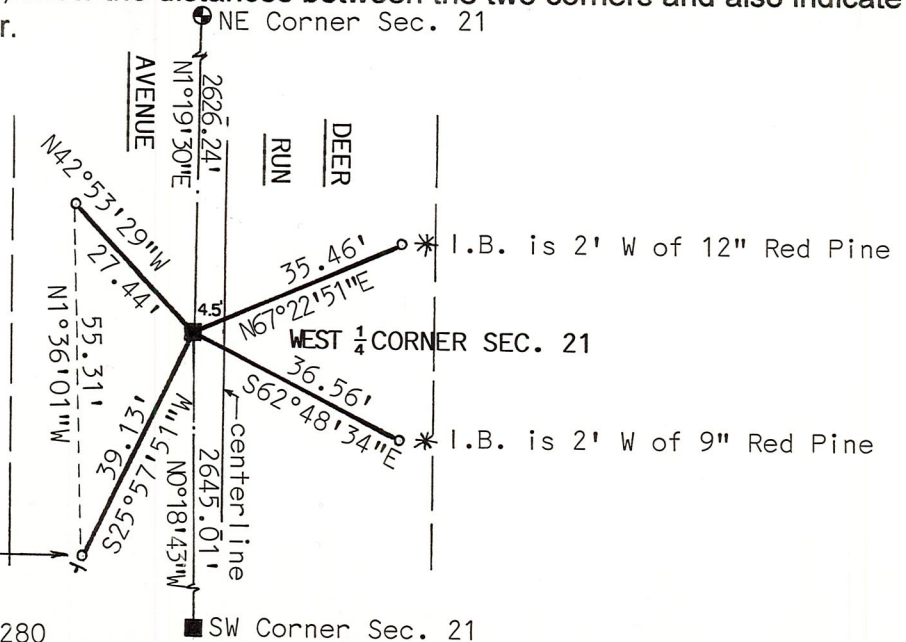
Corner was found and tied out by William Schereron June 18, 1970. Corner found was a 6" x 6" Granite Monument 8" below road surface. On July 18, 2001 at corner location we found no ties remaining. We redug by hand at surveyed location for the Granite Monument and found that Monument and re-tied as shown below.



(c) (d) (e) Plan view of corner with ties to at least 4 witness monuments. If in disagreement with previously established corner, show the distances between the two corners and also indicate the ties to the disputed corner.

○ Set 7/8"x30" re-bar with Lincoln County aluminum witness cap
 ■ 6"x6" Granite Monument
 ● Berntsen Monument

RECEIVED AT LINCOLN COUNTY COURTHOUSE THIS 8TH DAY OF November 20 01
Tony Dalhu
LAND INFORMATION OFFICE



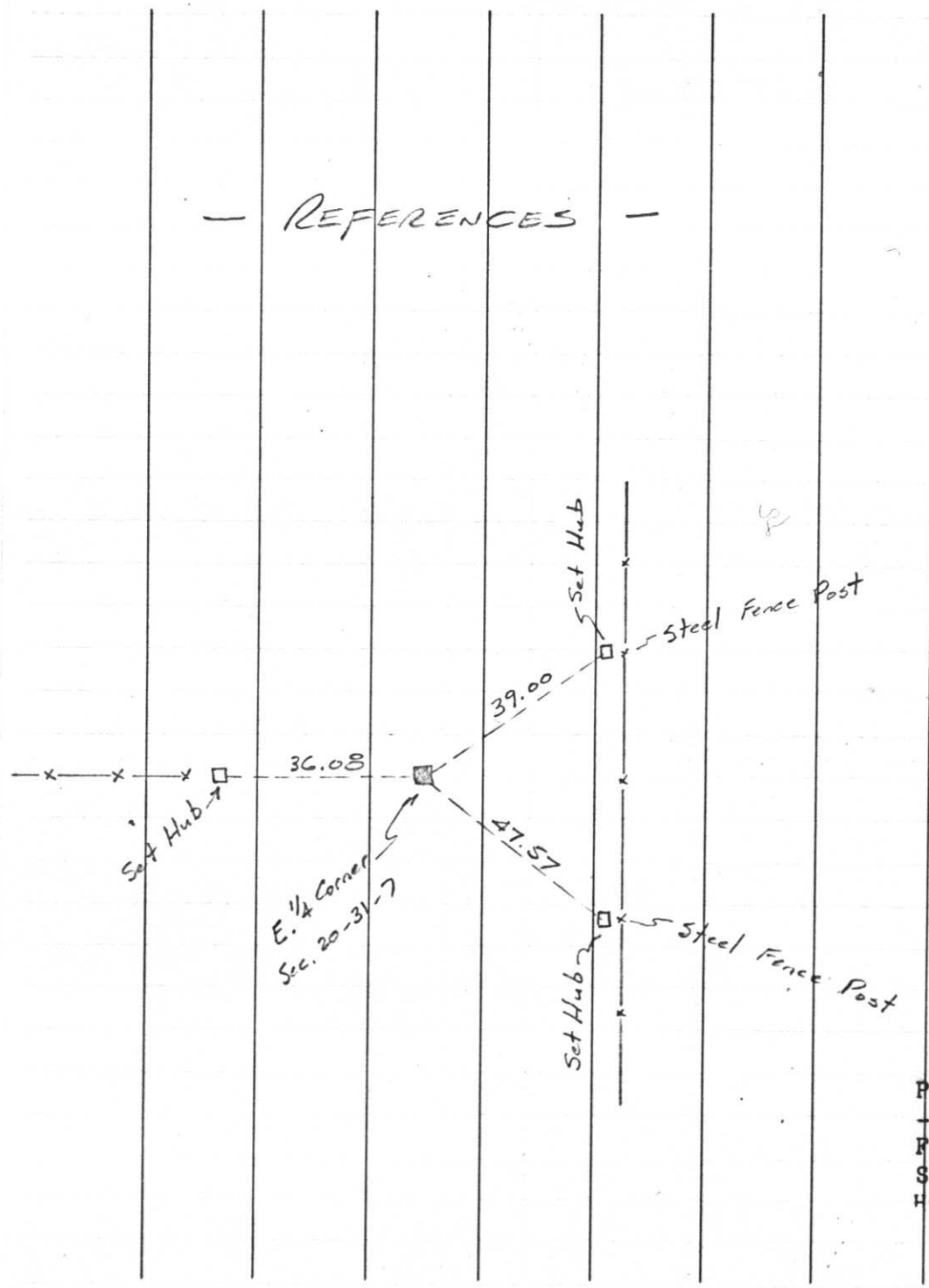
(i) I, David J. Goslin RLS No. s-2280
 (type or print name) certify that the corner location on this record was determined by me or under my direction and control and that this U.S. Public Land Survey Monument Record is correct and complete to the best of my knowledge and belief.

David J. Goslin 10-31-01
 Signature Date

Index No. 0-9

120.

REFERENCES



Project I.D. 1173-2-00 So. Co. Line
 -1.4Mi. N. Merrill U.S.H. 51
 Freeway Lincoln County Wm. Scherer
 Surveyor Received from Division of
 Hwy's Jan. 11. 1973

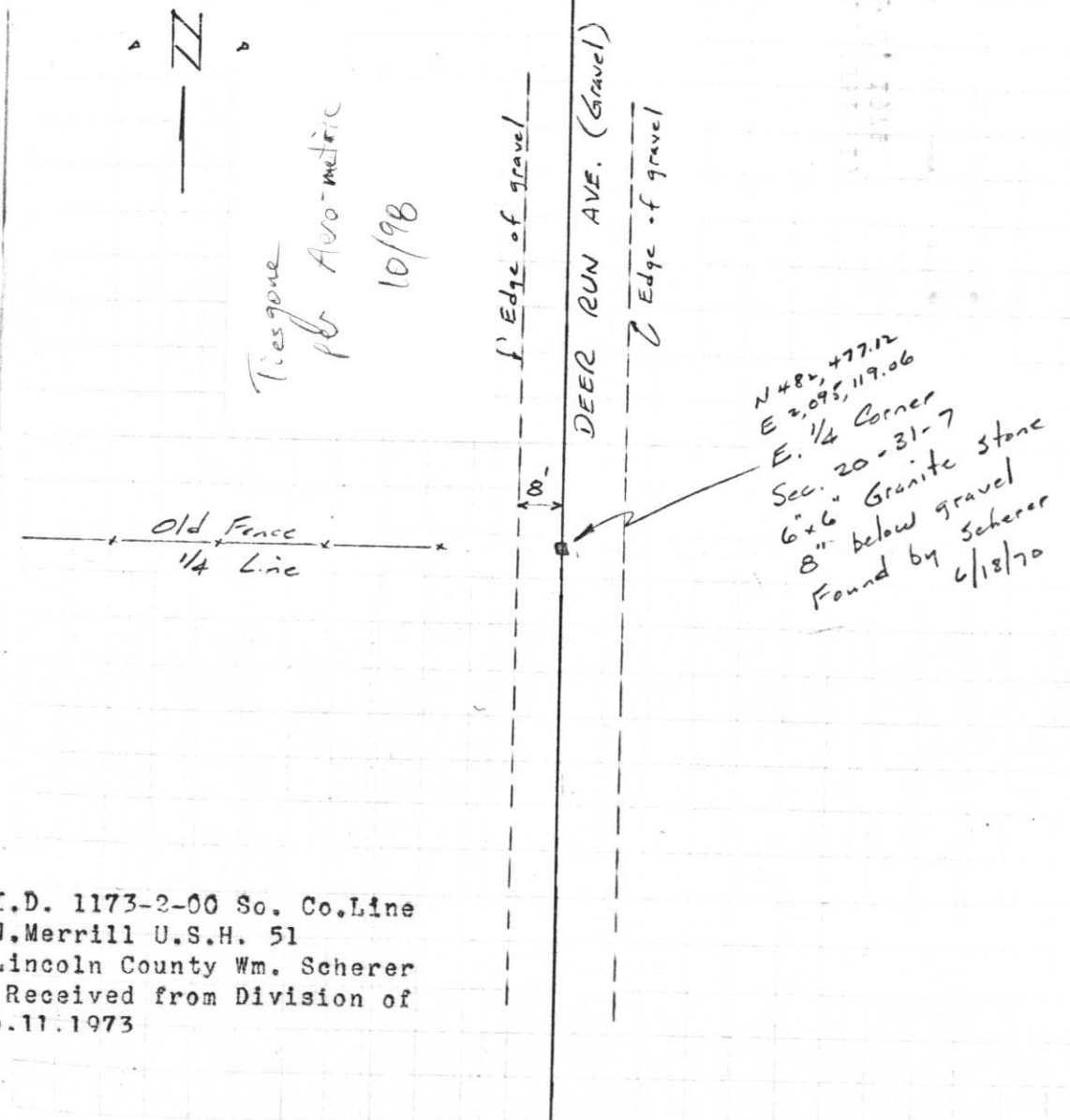
0-9

16

T 31 N

R 7 E

June 18, 1970



Ties gone
 pb Aero-metric
 10/98

N 48°, 477.12
 E 2,095, 119.06
 E. 1/4 Corner
 Sec. 20-31-7
 6x6 Granite stone
 8" below gravel
 Found by Scherer
 6/18/70