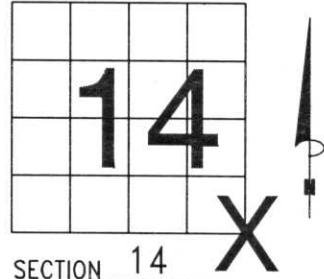


# U.S. PUBLIC LAND SURVEY MONUMENT RECORD

NOTE: THIS FORM IS INTENDED AND DESIGNED TO FULFILL ALL REQUIREMENTS OF WISCONSIN ADMINISTRATIVE CODE, CHAPTER A-E 7.08 U.S. PUBLIC LAND SURVEY MONUMENT RECORD (3) (a) (b) (c) (d) (e) (f) (g) (h) (i). AN ADDITIONAL SHEET MAY BE ADDED IF NECESSARY TO CONFORM WITH SAID REQUIREMENTS.

(a) CORNER LOCATION: TOWNSHIP 31 NORTH  
 RANGE 7 EAST/~~WEST~~  
 TOWN/~~CITY/VILLAGE~~ PINE RIVER  
 COUNTY LINCOLN



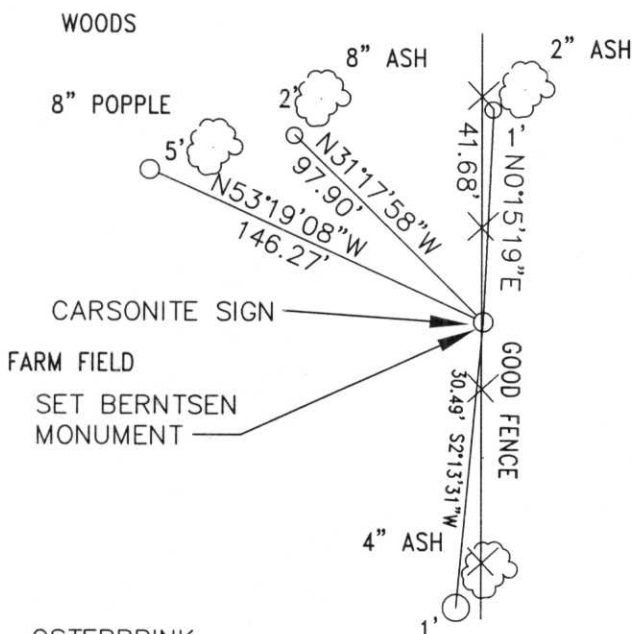
(b) (f) (g) (h) DESCRIPTION OF MONUMENT FOUND AT THIS CORNER AND IF IT WAS ACCEPTED, STATE ALL EVIDENCE (MATERIAL, TESTIMONIAL, OCCUPATIONAL, PLATS, RECORDS, OTHER MONUMENTS) USED AS BASIS FOR ACCEPTING. IF NOT ACCEPTED OR IF NOTHING WAS FOUND, STATE EVIDENCE USED AS BASIS FOR ESTABLISHING LOCATION. IF REESTABLISHED THROUGH LOST CORNER PROPORTIONATE METHODS, INDICATE ALL MONUMENTS, DISTANCES AND DIRECTIONS USED TO ESTABLISH. INDICATE TYPE OF MONUMENT FOUND OR SET AND SIGN POST.

ORIGINAL SURVEY BY ALBERT & FREDERICK ELLIS, 1852.

TALKED WITH ADJACENT LAND OWNERS, WHO DID NOT NO OF A MONUMENT IN THIS AREA. SEARCHED FENCE LINE, DUG WITH SHOVEL, FOUND NO EVIDENCE. HELD NORTH - SOUTH FENCE LINE, SPLIT DISTANCE FROM E 1/4 OF SECTION 14 TO E 1/4 OF SECTION 23. SET BERNTSEN MONUMENT. KEENE ROBL, ADJACENT LAND OWNER WOULD NOT ALLOW ANY WITNESS MONUMENTS ON HIS PROPERTY.

RECEIVED AT LINCOLN COUNTY  
 COURTHOUSE THIS 22nd DAY  
 OF Oct 19 98  
*Sat Prebe*  
 TAX DESCRIPTION OFFICE

(c) (d) (e) PLAN VIEW OF CORNER WITH TIES TO AT LEAST 4 WITNESS MONUMENTS. IF IN DISAGREEMENT WITH PREVIOUSLY ESTABLISHED CORNER, SHOW THE DISTANCES BETWEEN THE TWO CORNERS AND ALSO INDICATE THE TIES TO THE DISPUTED CORNER.



ALL WITNESS CORNERS  
 3/4"X30" REBAR WITH  
 ALUMINUM CAP

ALL WITNESS MONUMENTS SHOT  
 WITH EDM.

FIELD OF PINE TREES

(i) I, DAVID L. OSTERBRINK  
 (TYPE OR PRINT NAME) CERTIFY THAT THE CORNER  
 LOCATION ON THIS RECORD WAS DETERMINED BY ME  
 OR UNDER MY DIRECTION AND CONTROL AND THAT  
 THIS U.S. PUBLIC LAND SURVEY MONUMENT RECORD  
 IS CORRECT AND COMPLETE TO THE BEST OF MY  
 KNOWLEDGE AND BELIEF.

*David L. Osterbrink* 10-19-98  
 SIGNATURE DATE



INDEX NO. M-21