

U.S. PUBLIC LAND SURVEY MONUMENT RECORD

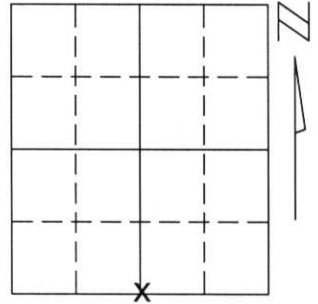
Note: This form is intended and designed to fulfill all requirements of Wisconsin Administrative Code, Chapter A-E 5.02, U.S. Public Land Survey Monument Record (3)(a)(b)(c)(d)(e)(f)(g)(h)(i). An additional sheet may be added if necessary to conform with said requirements.

(a) Corner location: Township 31 North

Range 7 East

Town/City/Village PINE RIVER

County LINCOLN

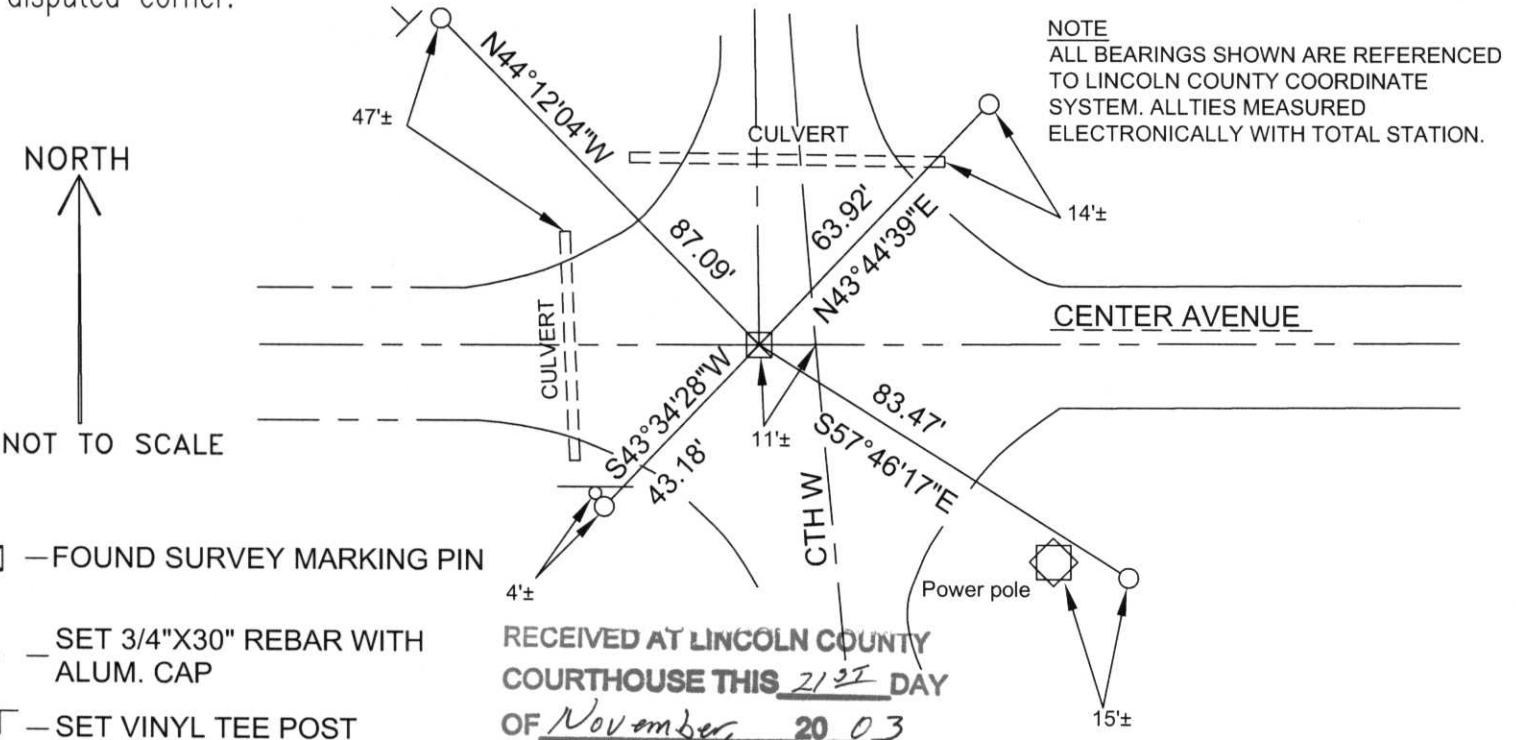


Section 17

(b)(f)(g)(h) Description of monument found at this corner and if it was accepted, state all evidence (material, testimonial, occupational, plats, records, other monuments) used as a basis for accepting. If not accepted or if nothing was found, state evidence used as basis for establishing location. If reestablished through lost corner proportionate methods, indicate all monuments, distances and directions used to establish.

SEARCHED FOR SOUTH 1/4 CORNER AND FOUND A SURVEY MARKING PIN 11 FEET WEST OF THE CENTERLINE OF COUNTY TRUNK HIGHWAY "W" AND ON THE CENTERLINE OF CENTER AVENUE. SAID SURVEY MARKING PIN FITS THE CENTERLINE TANGENT TO THE NORTH OF COUNTY TRUNK HIGHWAY W AND THE DISTANCE TO THE EXISTING CENTERLINE FROM THE RIGHT-OF-WAY PLAT. SAID PIN ALSO FITS THE DISTANCE TO THE SOUTHEAST CORNER OF SECTION 17 AS SHOWN ON THE LAND SURVEY MONUMENT RECORD SHEET FOR THE SOUTHEAST CORNER. SAID PIN ALSO FIT THE LOCATION AS SHOWN AS A P.K. NAIL ON SEVERAL CERTIFIED SURVEY MAPS. THE COUNTY SURVEYOR DUG AT THIS LOCATION SEVERAL YEARS AGO AND FOUND NOTHING. I ACCEPTED THE SURVEY MARKING PIN AS THE BEST AVAILABLE EVIDENCE OF THE CORNER'S ORIGINAL LOCATION. I SET TIES AS SHOWN BELOW TO PERPETUATE CORNER LOCATION

(c)(d)(e) Plan view of corner with ties to at least 4 witness monuments. If in disagreement with previously established corner, show the distances between the two corners and also indicate the ties to the disputed corner.



NOTE
 ALL BEARINGS SHOWN ARE REFERENCED TO LINCOLN COUNTY COORDINATE SYSTEM. ALL TIES MEASURED ELECTRONICALLY WITH TOTAL STATION.

- FOUND SURVEY MARKING PIN
- SET 3/4"X30" REBAR WITH ALUM. CAP
- SET VINYL TEE POST

RECEIVED AT LINCOLN COUNTY COURTHOUSE THIS 21ST DAY OF November 20 03
Tony Dahl
 LAND INFORMATION OFFICE

(i) I, Kyle R. Fischer
 (type or print name) certify that the corner location on this record was determined by me or under my direction and control and that this U.S. Public Land Survey Monument Record is correct and complete to the best of my knowledge and belief.

Kyle R. Fischer
 Signature 11-18-03
 Date



Index No. 17-7