

# U.S. PUBLIC LAND SURVEY MONUMENT RECORD

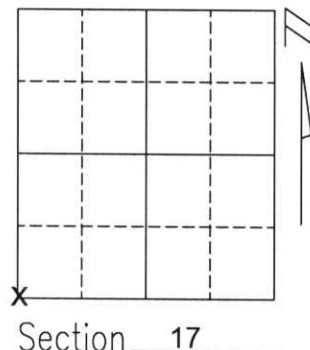
Note: This form is intended and designed to fulfill all requirements of Wisconsin Administrative Code, Chapter A-E 5.02, U.S. Public Land Survey Monument Record (3)(a)(b)(c)(d)(e)(f)(g)(h)(i). An additional sheet may be added if necessary to conform with said requirements.

(a) Corner location: Township 31 North

Range 7 East

Town/City/Village PINE RIVER

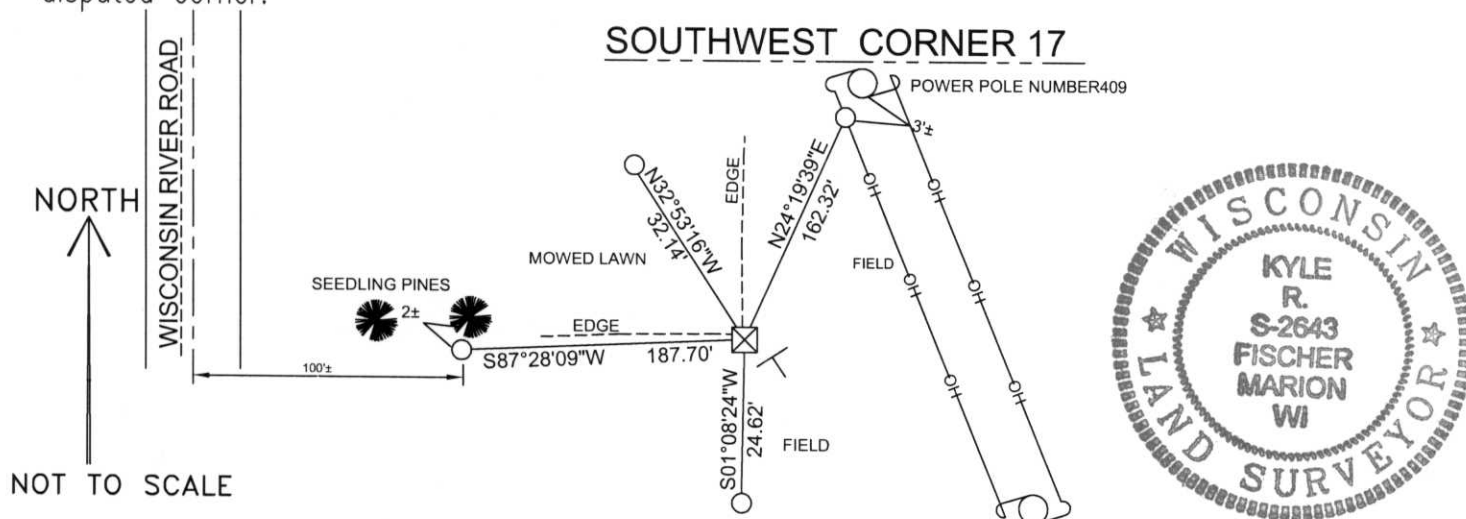
County LINCOLN



(b)(f)(g)(h) Description of monument found at this corner and if it was accepted, state all evidence (material, testimonial, occupational, plats, records, other monuments) used as a basis for accepting. If not accepted or if nothing was found, state evidence used as basis for establishing location. If reestablished through lost corner proportionate methods, indicate all monuments, distances and directions used to establish.

I found 6"x6" stone as shown on current tie sheet found at Lincoln County Surveyors Office. Several ties were missing or disturbed. The corner was then re-tied.

(c)(d)(e) Plan view of corner with ties to at least 4 witness monuments. If in disagreement with previously established corner, show the distances between the two corners and also indicate the ties to the disputed corner.



- FOUND 6"X6" STONE
- SET 3/4"X30" REBAR WITH ALUM. CAP
- SET VINYL TEE POST

NOTE  
 ALL BEARINGS SHOWN ARE REFERENCED TO LINCOLN COUNTY COORDINATE SYSTEM.  
 ALL TIES MEASURED ELECTRONICALLY WITH TOTAL STATION.

RECEIVED AT LINCOLN COUNTY COURTHOUSE THIS 21<sup>ST</sup> DAY OF November 20 03  
*Zony Dahl*  
 LAND INFORMATION OFFICE

(i) I, Kyle R. Fischer  
 (type or print name) certify that the corner location on this record was determined by me or under my direction and control and that this U.S. Public Land Survey Monument Record is correct and complete to the best of my knowledge and belief.

*Kyle R. Fischer*  
 Signature 11-18-03  
Date

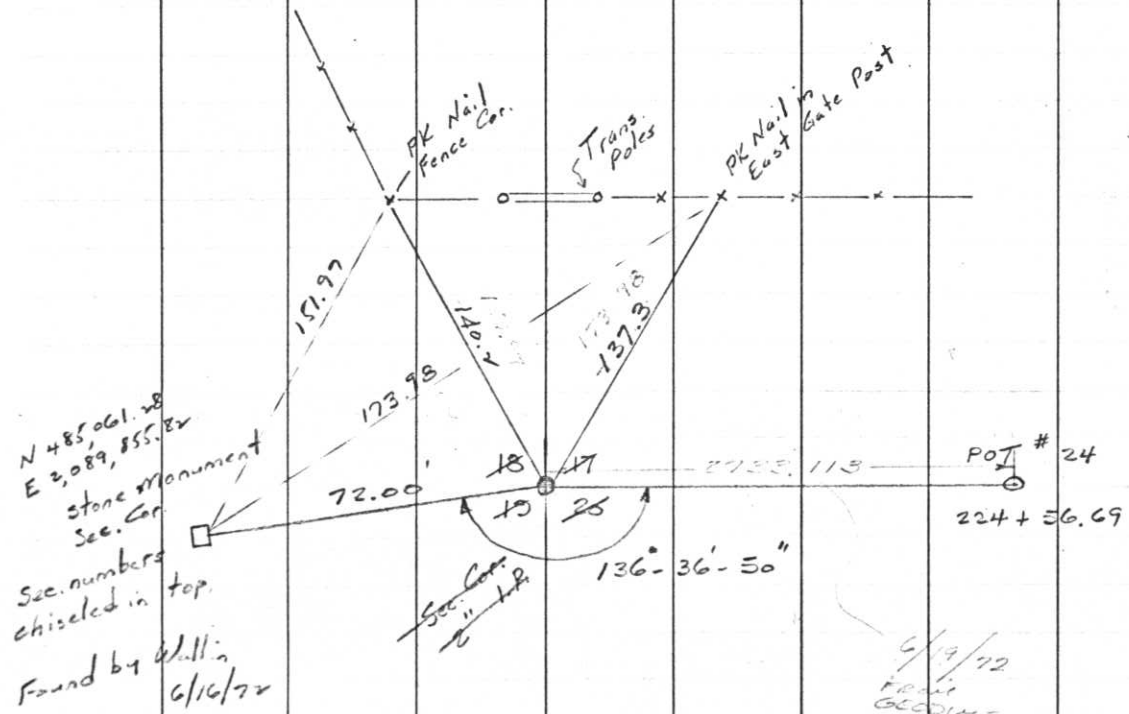
Index No. M-5

May 27, 1970

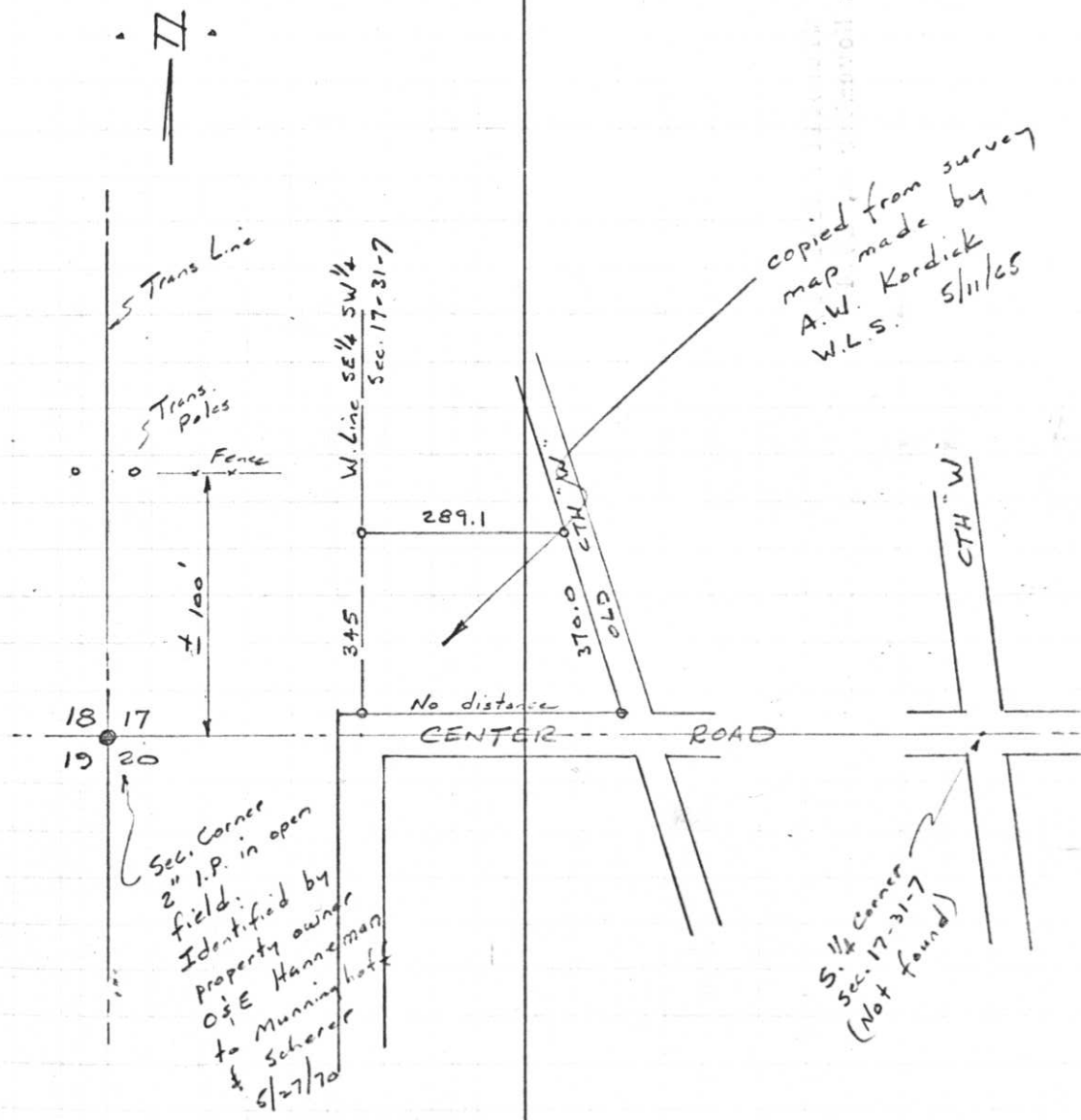
T31 N, R7E

REFERENCES

116.



6/19/72  
FROM  
GEOGRAPHIC  
DISTANCES



copied from survey map made by A.W. Kordick W.L.S. 5/11/65

Project I.D. 1173-2-00 So. Co. Line  
-1.4 Mi. N. Merrill U.S.H. 51  
Freeway Lincoln County Wm. Scherer  
Surveyor Received from Division of  
Hwy's Jan. 11. 1973