

# U.S. PUBLIC LAND SURVEY MONUMENT RECORD

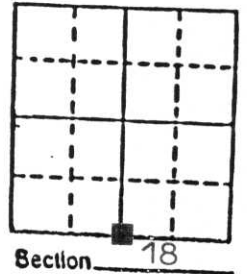
**Note:** This form is intended and designed to fulfill all requirements of Wisconsin Administrative Code, Chapter A-E 5.02, U.S. Public Land Survey Monument Record (3) (a) (b) (c) (d) (e) (f) (g) (h) (i). An additional sheet may be added if necessary to conform with said requirements.

(a) Corner location: Township 31 North

Range 7 East

Town Scott

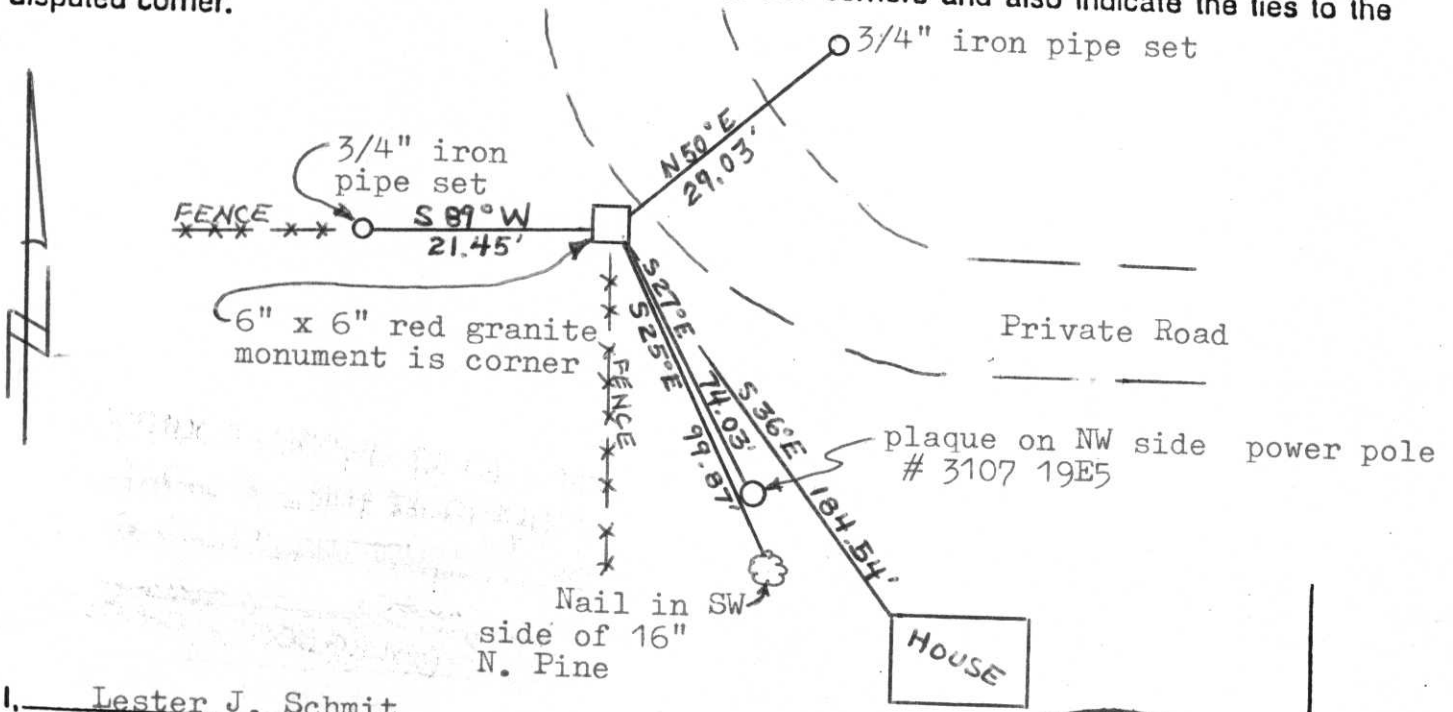
County Lincoln



b) (f) (g) (h) Description of monument found at this corner and if it was accepted, state all evidence (material, testimonial, occupational, plats, records, other monuments) used as a basis for accepting. If not accepted or if nothing was found, state evidence used as basis for establishing location. If reestablished through lost corner proportionate methods, indicate all monuments, distances and directions used to establish.

Original Gov't. Survey: 5 March 1852 by A.G. & F.S. Ellis, set wood post for corner, with bearings, hemlock 12 N 3W 37 and hemlock 12 S 44 E 8. I found a 6" x 6" red granite monument for the corner as called for by Chester J. Nowaczyk on 3 Aug 76.

c) (d) (e) Plan view of corner with ties to at least 4 witness monuments. If in disagreement with previously established corner, show the distances between the two corners and also indicate the ties to the disputed corner.



(i) I, Lester J. Schmit  
 (type or print name) certify that the corner location on this record was determined by me or under my direction and control and that this U.S. Public Land Survey Monument Record is correct and complete to the best of my knowledge and belief.

Lester J. Schmit                      17 Aug 90  
 Signature                                      Date



Index No. M-3

CERTIFIED LAND CORNER RESTORATION

Index No. M-3

State of Wisconsin }  
County of LINCOLN } ss.

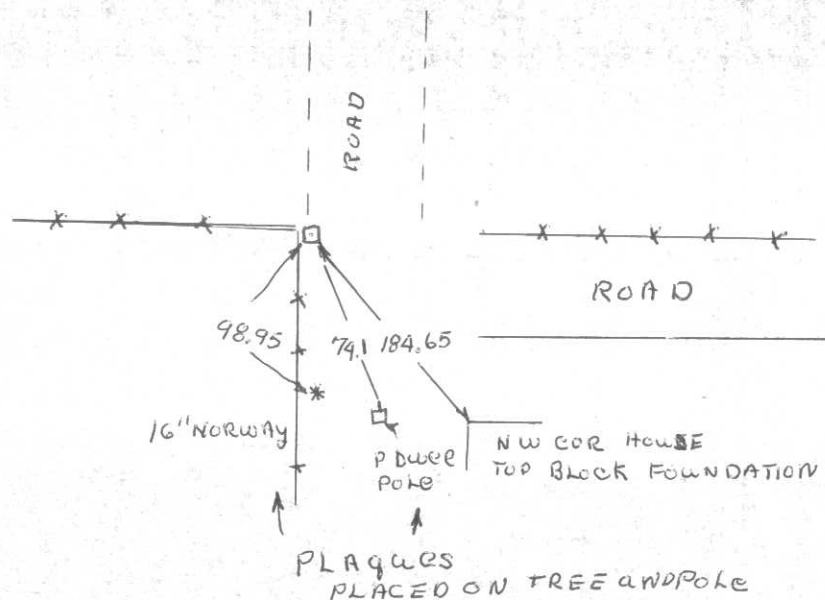
History of original corner establishment:

I Chester J. Nowaczyk, do hereby certify that on the 3RD day of Aug, 1976, I found evidence of the N. 1/4 corner of SEC. 19 Township 31, North, Range 7 E, Fourth, Principal Meridian, as described hereon; and that from this evidence I established a new monument and accessories as described hereon to perpetuate the original location of this corner.

Resident witnesses:

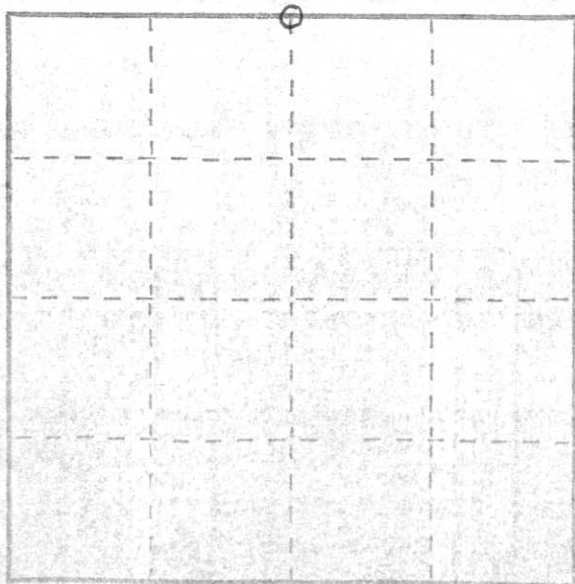
.....  
.....  
.....

Description of corner evidence found:



Description of monument and accessories I established to perpetuate the original location of this corner.

GRANITE MONUMENT FOUND



○ = Corner monument restored.

Dated at WAUSAU, Wis., this 9th day of Aug, 1976

Signature Chester J. Nowaczyk Title SURVEYOR Registration No. 1143  
(County Surveyor, Registered Land Surveyor, or other duly authorized official)

Office of Register of Deeds, County of \_\_\_\_\_, I hereby certify that the within instrument was filed in this office for record on the \_\_\_\_\_ day of \_\_\_\_\_, 19\_\_\_\_ at \_\_\_\_\_ o'clock \_\_\_\_\_ M.

(Register of Deeds)

By \_\_\_\_\_ Deputy