

U.S. PUBLIC LAND SURVEY MONUMENT RECORD

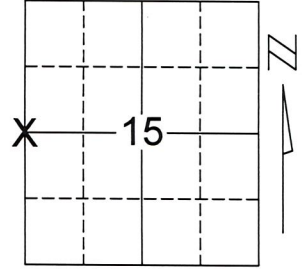
Note: This form is intended and designed to fulfill all requirements of Wisconsin Administrative Code, Chapter A-E 7.08, U.S. Public Land Survey Monument Record (3)(a)(b)(c)(d)(e)(f)(g)(h)(i). An additional sheet may be added if necessary to conform with said requirements.

(a) Corner location: Township 31 North

Range 7 East

Town/City/Village PINE RIVER

County LINCOLN



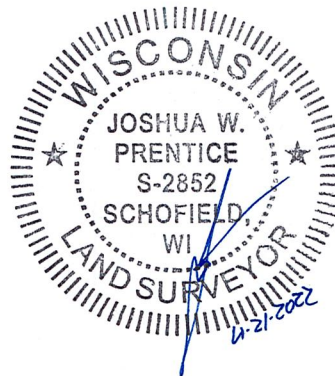
Section 15

(B)(F)(G)(H) DESCRIPTION OF MONUMENT FOUND AT THIS CORNER AND IF IT WAS ACCEPTED, STATE ALL EVIDENCE (MATERIAL, TESTIMONIAL, OCCUPATIONAL, PLATS, RECORDS, OTHER MONUMENTS) USED AS A BASIS FOR ACCEPTING. IF NOT ACCEPTED OR IF NOTHING WAS FOUND, STATE EVIDENCE USED AS BASIS FOR ESTABLISHING LOCATION. IF REESTABLISHED THROUGH LOST CORNER PROPORTIONATE METHODS, INDICATE ALL MONUMENTS, DISTANCES AND DIRECTIONS USED TO ESTABLISH.

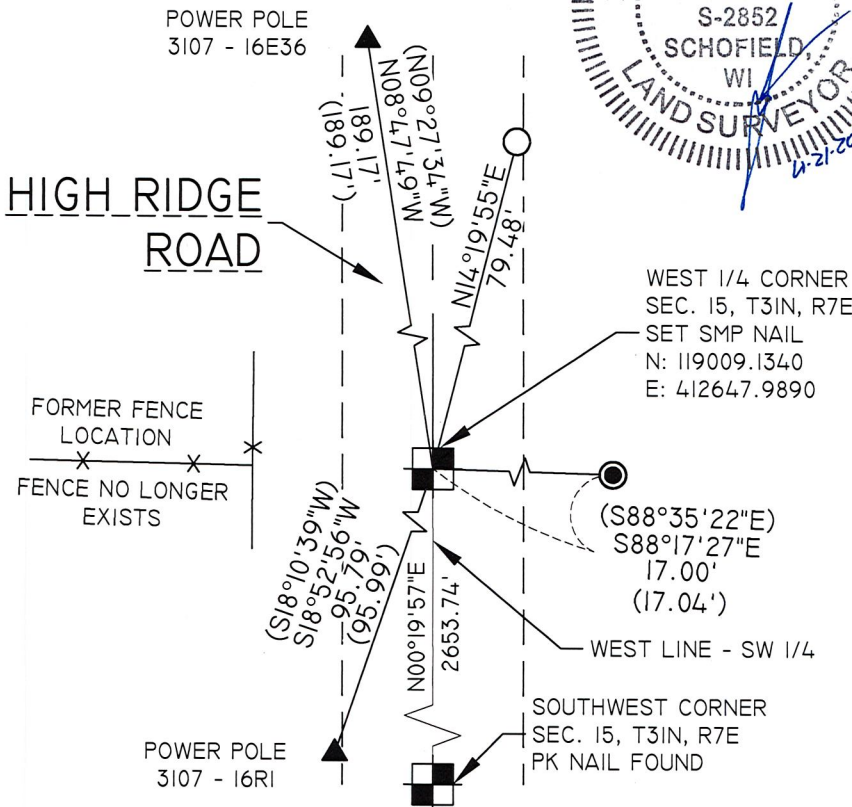
- ORIGINAL CORNER ESTABLISHMENT: HG & GS ELLIS FEB & MARCH 1852 SET WOOD POST.
- IN SEPTEMBER OF 1989, DAVID LEMKE EXCAVATED THE ROAD IN AN AREA OF WHERE A FENCE INTERSECTS FROM THE WEST. NO EVIDENCE OF THE CORNER WAS FOUND AND AREA RESIDENTS STATED THE CORNER WAS ASSUMED TO BE AT THE INTERSECTION OF THE FENCE LINE AND THE CENTERLINE. A RAILROAD SPIKE WAS SET AT THE INTERSECTION OF THE CENTERLINE AND FENCE LINE AND FOUR TIES WERE ALSO SET.
- IN APRIL OF 2022, THE RAILROAD SPIKE MONUMENT SET BY DAVID LEMKE WAS NOT RECOVERED. THREE TIES OF RAILROAD SPIKES IN POWER POLES WERE RECOVERED AND WERE USED TO REESTABLISH THE LOCATION OF THE CORNER MONUMENT. AN SMP NAIL WAS SET AT THE CORNER LOCATION AND ONE ADDITIONAL TIE WAS SET TO THE NORTHEAST FOR AN ADDITIONAL FOURTH TIE.

(C)(D)(E) PLAN VIEW OF CORNER WITH TIES TO AT LEAST 4 WITNESS MONUMENTS. IF IN DISAGREEMENT WITH PREVIOUSLY ESTABLISHED CORNER, SHOW THE DISTANCES BETWEEN THE TWO CORNERS AND ALSO INDICATE THE TIES TO THE DISPUTED CORNER.

RECEIVED BY LINCOLN COUNTY SURVEYOR THIS 22ND DAY OF April 20 22
Zany Duh
 COUNTY SURVEYOR



BEARINGS ARE BASED ON THE LINCOLN COUNTY COORDINATE SYSTEM NAD 83 (2011) AND ARE REFERENCED TO THE WEST LINE OF THE SOUTHWEST 1/4 MEASURED TO BEAR N00°19'57"E.



- - 3/4 IN. REBAR FOUND
 - - 1-1/4 IN. O.D. X 18 IN. IRON PIPE WEIGHING 1.68 LBS/LIN. FT. SET
 - ▲ - RAILROAD SPIKE FOUND IN UTILITY POLE
- 17.00' - MEASURED BEARING/DISTANCE
 (17.04') - RECORD BEARING/DISTANCE

NORTH

NOT TO SCALE

(I) I, JOSHUA W. PRENTICE, PLS S-2852, CERTIFY THAT THE CORNER LOCATION ON THIS RECORD WAS DETERMINED BY ME OR UNDER MY DIRECTION AND CONTROL AND THAT THIS U.S. PUBLIC LAND SURVEY MONUMENT RECORD IS CORRECT AND COMPLETE TO THE BEST OF MY KNOWLEDGE AND BELIEF.

SIGNATURE

DATE

4-21-2022

Index No. 13

CERTIFIED LAND CORNER RESTORATION

Index No. K-13

State of Wisconsin }
 County of LINCOLN } ss.

I DAVID L. LEMKE, do hereby certify that on the 5TH day of SEPT., 1989, I found evidence of the WEST 1/4 corner of SECTION 15 Township 31, North, Range 7 EAST, Fourth Principal Meridian, as described hereon; and that from this evidence I established a new monument and accessories as described hereon to perpetuate the original location of this corner.

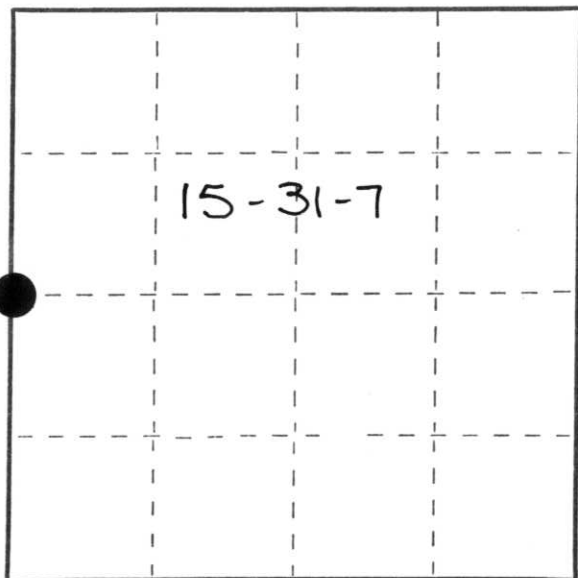
Resident witnesses:

.....

Stock No. 26272



FORM 985



○ = Corner monument restored.

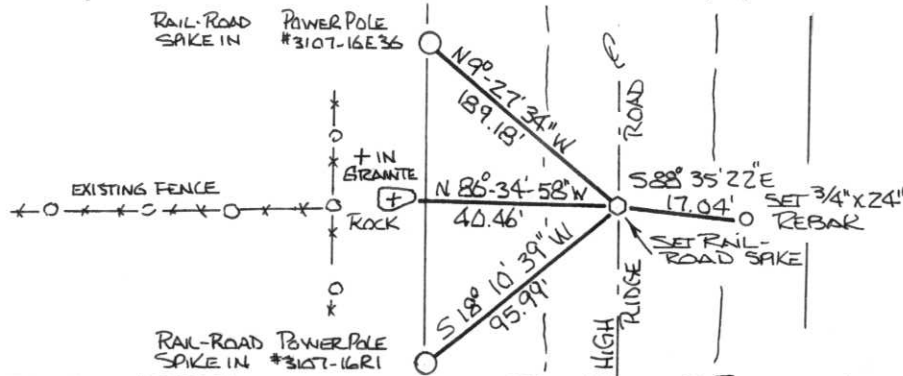
History of original corner establishment:

HG & GS ELLIS FEB & MARCH 1852 SET WOOD POST

Description of corner evidence found:

EXCAVATED ROAD IN AREA OF FENCE INTERSECTION FROM WEST- NO EVIDENCE OF CORNER FOUND - AREA RESIDENCES STATE CORNER ASSUMED TO BE AT FENCE LINE AND E INTERSECT - SET RAIL-ROAD SPIKE AT E AND FENCE LINE - BEST AVAILABLE EVIDENCE BLACK TOP & SUBGRADE NOT SUITABLE FOR MONUMENT PLACEMENT

Description of monument and accessories I established to perpetuate the original location of the corner:



Dated at MERRILL, Wis., this 5TH day of SEPT., 1989.

Signature: David L. Lemke Title: REGISTERED LAND SURVEYOR Registration No. 1845
 (County Surveyor, Registered Land Surveyor, or other duly authorized official)

Office of Register of Deeds, County of....., I hereby certify that the within instrument was filed in this office for record on the..... day of....., 19..... at..... o'clock..... M.

(Register of Deeds)

By..... Deputy