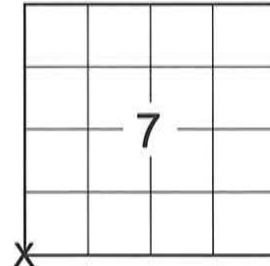


LINCOLN COUNTY U.S. PUBLIC LAND SURVEY MONUMENT LOCATION RECORD

SECTION 7
TOWNSHIP 31 N
RANGE 8 E

I-01
NO.

PINE RIVER
CITY, VILLAGE, TOWN
SECTION



LANDMARK BENCHMARK _____
CORNER IDENTITY: SOUTHWEST CORNER SECTION 7 (SNM-1 NAIL)
LINCOLN COUNTY COORDINATE: N: 121570.9960
E: 428563.2790
ELEVATION-(FEET): _____ DATUM: _____
WEATHER: CLEAR AND SUNNY
DATE OF SURVEY: 9/12/2014 TEMPERATURE: 65 °F
SURVEY PARTY: KEITH WALKOWSKI AND CHRIS FIERI

FOUND
SET
RESET
RE-TIED

LOCATION
(Indicated By)



BASIS FOR MONUMENT LOCATION:
(DESCRIBE METHOD OF SURVEY AND CORNER AUTHENTICATION)
1851 - James M. Marsh established the original corner.

8/8/1994 - E. Abendroth PLS-798 used Wisconsin State Highway Plans Division Job No. 7069 to re-establish the corner position based on stationing and centerline data. Set a P.K. Nail at the corner and set reference monuments.

6/11/2012 - A. Dallman PLS-2405 found three (3) existing reference monuments intact. Set one (1) additional reference monument based on existing reference tie location.

9/15/2014 - I visited the corner location prior to the resurfacing of Highway "64" and recovered three (3) existing reference monuments from the previous corner restoration form. Record distances checked very well. Did not recover a monument at the corner location. Set four (4) Berntsen SDDR-130 witness monuments and returned after construction to set a Berntsen SNM-1 Nail at the corner location.

CERTIFIED CORRECT:

Christopher L. Fieri

CHRISTOPHER L. FIERI S-2954

Registered Land Surveyor

DATE: 11-18-2014

FIELD BOOK NO. 41 PAGE NO. 19

COMPANY RIVERSIDE LAND SURVEYING LLC

TIE SKETCH:

- BERNTSEN SNM-1 NAIL SET
- BERNTSEN SDDR-130 MONUMENT SET
- 1-1/4" IRON PIPE FOUND
- 1" IRON PIPE FOUND
- 7/8" REBAR WITH LINCOLN COUNTY CAP FOUND
- VINYL T-POST SET

S1/4 COR.
SECTION 12
T31N, R7E

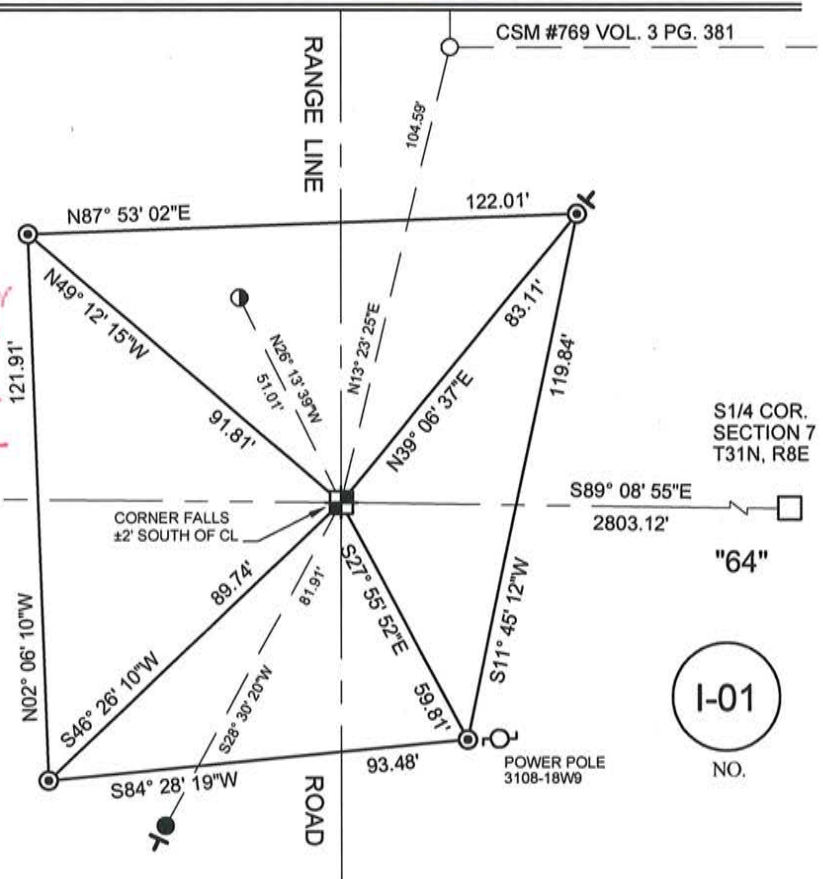


STATE

N89° 26' 26" W
2657.99'

HIGHWAY

BEARINGS ARE BASED ON THE LINCOLN COUNTY COORDINATE SYSTEM NAD (83) 2011 AND REFERENCED TO THE SOUTH LINE OF THE SOUTHWEST 1/4 OF SECTION 7 MEASURED TO BEAR SOUTH 89°08'55" EAST



S1/4 COR.
SECTION 7
T31N, R8E

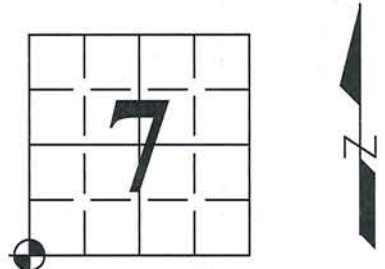
"64"

I-01
NO.

U.S. PUBLIC LAND SURVEY MONUMENT RECORD

Note: This form is intended and designed to fulfill all requirements of Wisconsin Administrative Code, Chapter A-E 7.08, U.S. Public Land Survey Monument Record (3) (a) (b) (c) (d) (e) (f) (g) (h) (i). An additional sheet may be added if necessary to conform with said requirements.

(a) Corner location: Township 31 North
 Range 8 East
 Town/~~City~~/Village Pine River
 County Lincoln



(b) (f) (g) (h) Description of monument found at this corner and if it was accepted, state all evidence (material, testimonial, occupational, plats, records, other monuments) used as a basis for accepting. If not accepted or if nothing was found, state evidence used as basis for establishing location. If reestablished through lost corner proportionate methods, indicate all monuments, distances and directions used to establish.

1851 - James M. Marsh set Section corner post. 14" Hemlock, S 82° E, 55 links; 18" Sugar Maple, S 35° W, 37 links; 14" Birch, N 30° W, 62 links; 12" Sugar Maple, N 60° E, 61 links.

08/08/1994 - E. Abendroth PLS-798 used the Wisconsin State Hwy "64" Plans Division Job No. 7069 to re-establish the corner position based on stationing and centerline data. Set a P.K. Nail at the corner location and made reference ties.

06/11/2012 - A. Dallman PLS-2405 found three (3) existing reference ties in tact. Set one (1) additional tie based on existing reference tie corner location as shown in the sketch below.

(c) (d) (e) Plan view of corner with ties to at least 4 witness monuments. If in disagreement with previously established corner, show the distance between the two corners and also indicate the ties to the disputed corner.

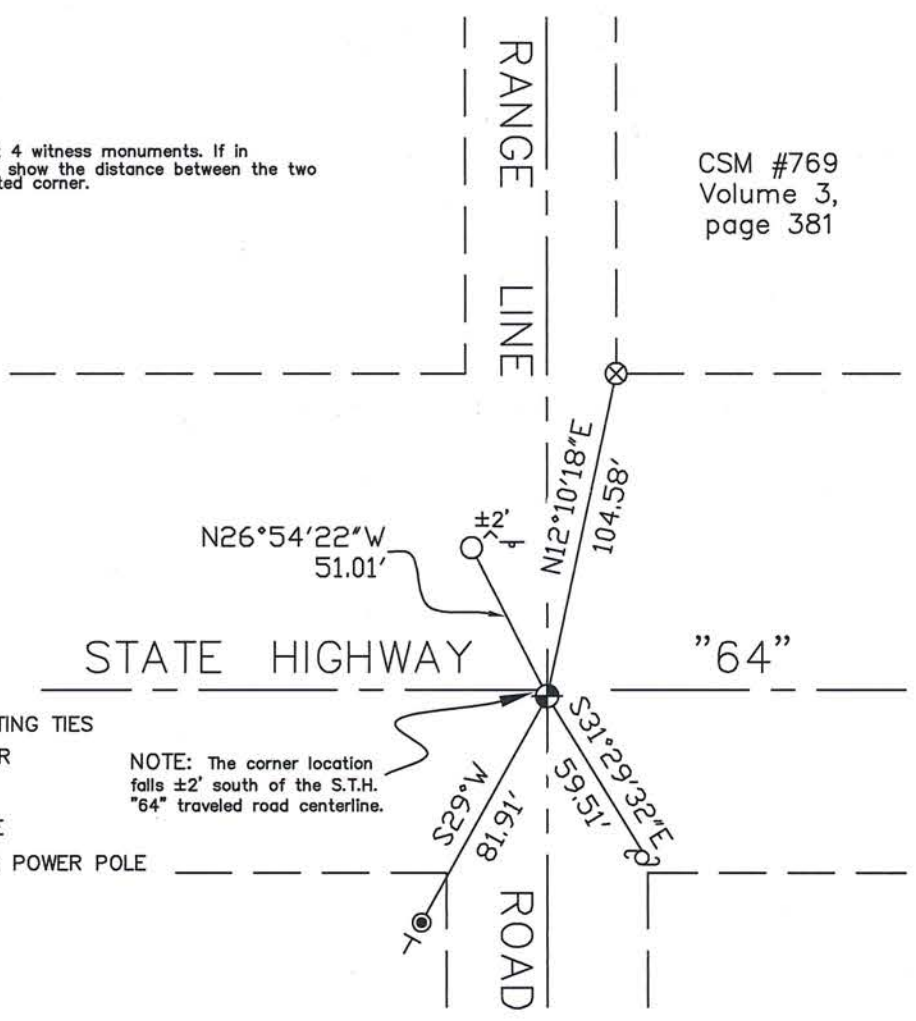
CSM #769
 Volume 3,
 page 381



NOT TO SCALE

- ⊕ - CORNER POSITION FROM EXISTING TIES
- ⊙ - SET ALUMINUM CAPPED REBAR
- - FOUND 1" (O.D.) IRON PIPE
- ⊗ - FOUND 1.25" (O.D.) IRON PIPE
- Ⓞ - FOUND ALUMINUM PLAQUE ON POWER POLE
- ⊣ - STOP SIGN
- ∟ - WHITE VINYL MARKER POST

NOTE: The corner location falls ±2' south of the S.T.H. "64" traveled road centerline.



(i) I, Anthony R. Dallman
 (type or print name) certify that the corner location on this record was determined by me under my direction and control and that this U.S. Public Land Survey Monument Record is correct and complete to the best of my knowledge and belief.

Anthony R. Dallman 7/22/14
 Signature Date

Index No. I-01

U.S. PUBLIC LAND SURVEY MONUMENT RECORD

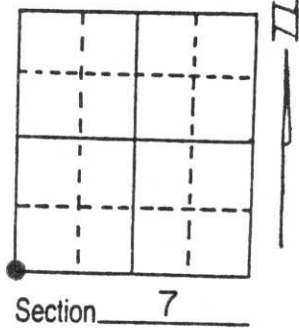
Note: This form is intended and designed to fulfill all requirements of Wisconsin Administrative Code, Chapter A-E 5.02, U.S. Public Land Survey Monument Record (3) (a) (b) (c) (d) (e) (f) (g) (h) (i). An additional sheet may be added if necessary to conform with said requirements.

(a) Corner location: Township 31 North

Range 8 East

Town/City/Village TOWN OF PINE RIVER

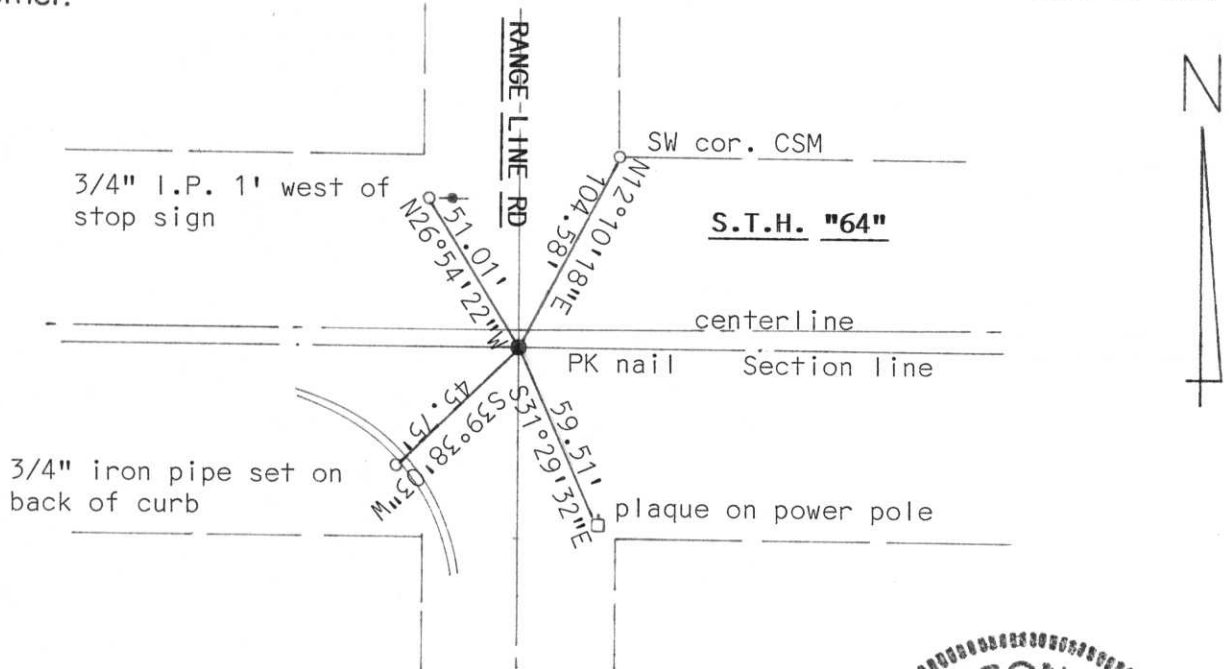
County LINCOLN



(b) (f) (g) (h) Description of monument found at this corner and if it was accepted, state all evidence (material, testimonial, occupational, plats, records, other monuments) used as a basis for accepting. If not accepted or if nothing was found, state evidence used as basis for establishing location. If reestablished through lost corner proportionate methods, indicate all monuments, distances and directions used to establish.

State Hwy Plan S.T.H. "64" No. 7069 located the Section line by stationing and related to centerline of highway. Highway plans were used to reestablish this corner. We considered this to be the best evidence available. Set corner

(c) (d) (e) Plan view of corner with ties to at least 4 witness monuments. If in disagreement with previously established corner, show the distances between the two corners and also indicate the ties to the disputed corner.



(i) I, Edwin R. Abendroth RLS No. S-798
 (type or print name) certify that the corner location on this record was determined by me or under my direction and control and that this U.S. Public Land Survey Monument Record is correct and complete to the best of my knowledge and belief.

Edwin R. Abendroth August 9, 1994
 Signature Date



Index No. I-1









