

LINCOLN COUNTY U.S. PUBLIC LAND SURVEY MONUMENT LOCATION RECORD

SECTION 12
TOWNSHIP 31 N
RANGE 7 E

1-23
NO.

LANDMARK BENCHMARK _____

FOUND
SET
RESET
RE-TIED

CORNER IDENTITY: SOUTH 1/4 CORNER SECTION 12 (SNM-1 NAIL)
LINCOLN COUNTY COORDINATE: N: 121596.9480
E: 425905.4140

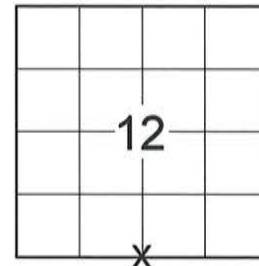
ELEVATION-(FEET): _____ DATUM: _____

WEATHER: CLEAR AND SUNNY

DATE OF SURVEY: 9/12/2014 TEMPERATURE: 65 °F

SURVEY PARTY: KEITH WALKOWSKI AND CHRIS FIERI

PINE RIVER
CITY, VILLAGE, TOWN
SECTION



LOCATION
(Indicated By)



BASIS FOR MONUMENT LOCATION:

(DESCRIBE METHOD OF SURVEY AND CORNER AUTHENTICATION)

11/15/1996 - Gary Krueger established the corner location from State Highway Plans and lines of occupation. P.K. Nail was set at the corner location and tied out. Corner is approximately 6 feet South of the centerline of "64".

9/15/2014 - I visited the corner location prior to the resurfacing of Highway "64" and recovered a gear headed spike at the corner location. Also recovered all four (4) witness monuments from the previous corner restoration form. Distances checked well. Set four (4) Berntsen SSDR-130 witness monuments and returned after construction to set a Berntsen SNM-1 Nail at the corner location.

RECEIVED BY LINCOLN COUNTY
SURVEYOR THIS 4TH DAY
OF December 20¹⁴
Tommy Dallen
COUNTY SURVEYOR

CERTIFIED CORRECT:

Christopher L. Fieri
CHRISTOPHER L. FIERI S-2954

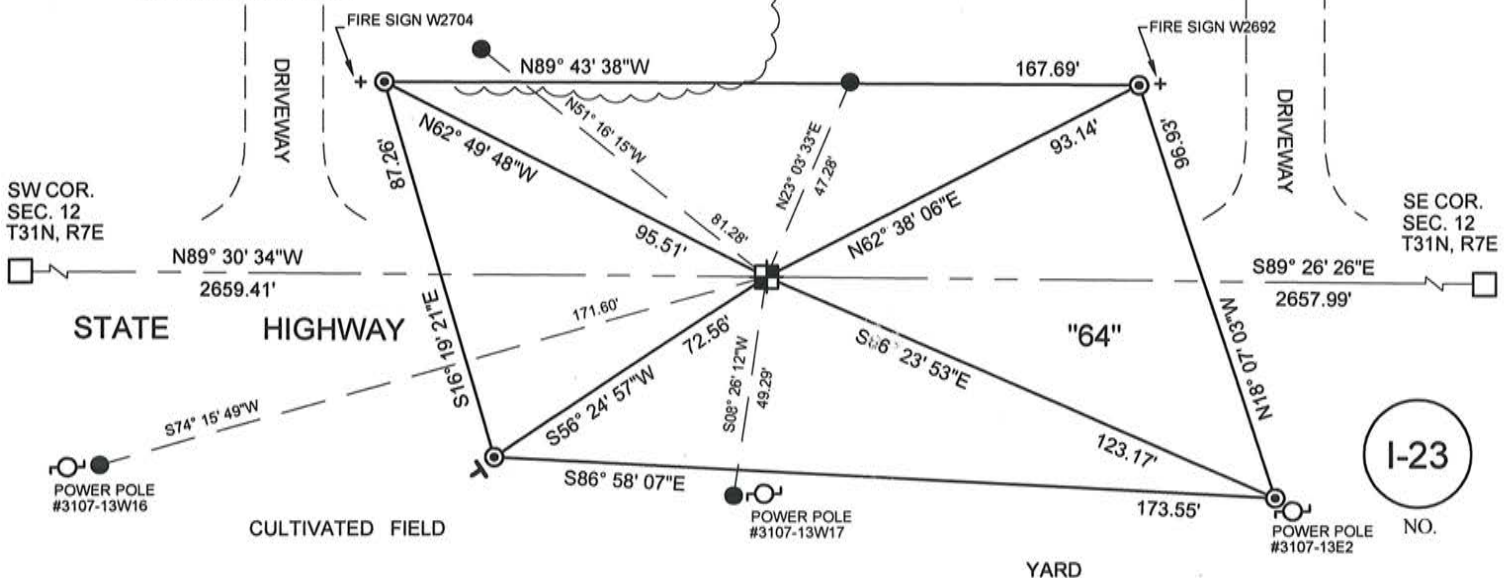
Registered Land Surveyor

FIELD BOOK NO. 41 PAGE NO. 20
COMPANY RIVERSIDE LAND SURVEYING LLC

DATE: 11-20-2014

TIE SKETCH:

BEARINGS ARE BASED ON THE LINCOLN COUNTY COORDINATE SYSTEM NAD (83) 2011 AND REFERENCED TO THE SOUTH LINE OF THE SOUTHWEST 1/4 OF SECTION 12 MEASURED TO BEAR NORTH 89°30'34" WEST



1-23
NO.

U.S. PUBLIC LAND SURVEY MONUMENT RECORD

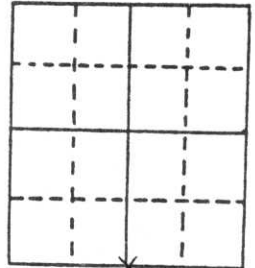
Note: This form is intended and designed to fulfill all requirements of Wisconsin Administrative Code, Chapter A-E 5.02, U.S. Public Land Survey Monument Record (3) (a) (b) (c) (d) (e) (f) (g) (h) (i). An additional sheet may be added if necessary to conform with said requirements.

(a) Corner location: Township 31 North

Range 7 East

Town/City/Village PINE RIVER

County LINCOLN



Section 12

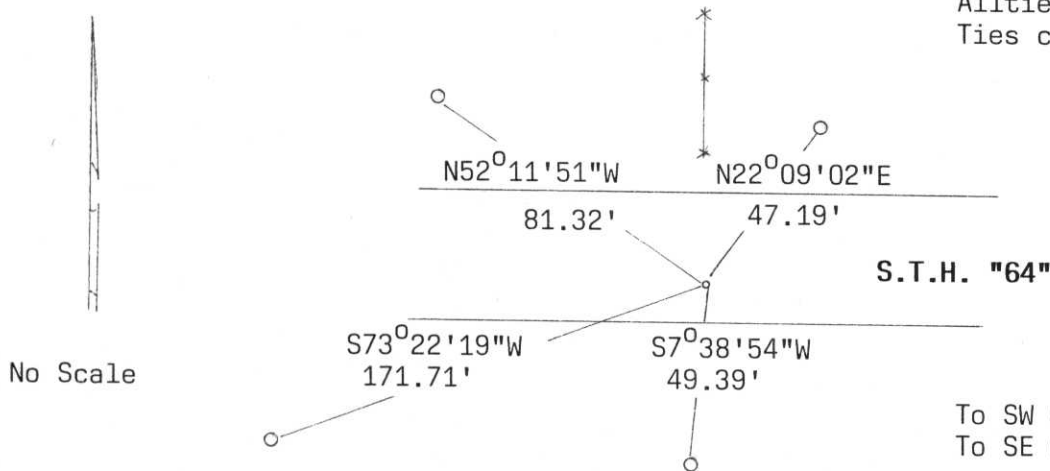
(b) (f) (g) (h) Description of monument found at this corner and if it was accepted, state all evidence (material, testimonial, occupational, plats, records, other monuments) used as a basis for accepting. If not accepted or if nothing was found, state evidence used as basis for establishing location. If reestablished through lost corner proportionate methods, indicate all monuments, distances and directions used to establish.

Did not dig for corner because of concrete and being S.T.H. "64". Corner was established from State Highway Plans and lines of occupation. PK Nail was set and tied out. Corner is approximately 5 feet South of centerline of "64".

**RECEIVED AT LINCOLN COUNTY
COURTHOUSE THIS 6th DAY
OF Jan 19 99
Pat Priebe
TAX DESCRIPTION OFFICE**

(c) (d) (e) Plan view of corner with ties to at least 4 witness monuments. If in disagreement with previously established corner, show the distances between the two corners and also indicate the ties to the disputed corner.

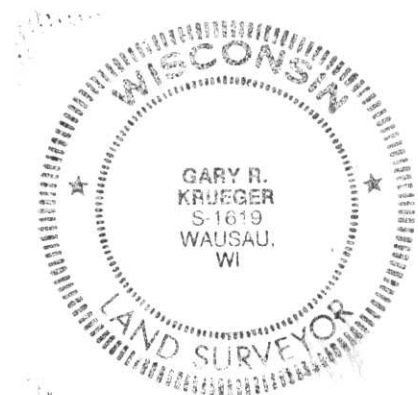
Allties 7/8" x 30" Rebars
Ties completed 11-15-96



To SW Cor. S89°37'17"W, 2659.54'
To SE Cor. N89°41'39"E, 2657.63'

(i) I, Gary R. Krueger, RLS NO.1619
(type or print name) certify that the corner location on this record was determined by me or under my direction and control and that this U.S. Public Land Survey Monument Record is correct and complete to the best of my knowledge and belief.

Gary R. Krueger 12-31-96
Signature Date



Index No. I-23