

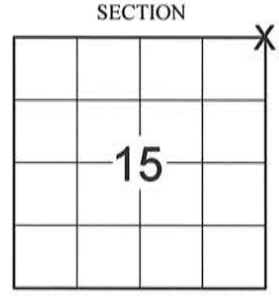
# LINCOLN COUNTY U.S. PUBLIC LAND SURVEY MONUMENT LOCATION RECORD

SECTION 15  
TOWNSHIP 31 N  
RANGE 7 E

I-17  
NO.

LANDMARK       BENCHMARK  
CORNER IDENTITY: NORTHEAST CORNER SEC. 15 (BERNTSEN MON.)  
LINCOLN COUNTY COORDINATE: N: 121650.5000  
E: 417969.0650  
ELEVATION-(FEET): \_\_\_\_\_ DATUM: \_\_\_\_\_  
WEATHER: CLEAR AND SUNNY  
DATE OF SURVEY: 9/12/2014 TEMPERATURE: 65 °F  
SURVEY PARTY: KEITH WALKOWSKI AND CHRIS FIERI

PINE RIVER  
CITY, VILLAGE, TOWN



## BASIS FOR MONUMENT LOCATION:

(DESCRIBE METHOD OF SURVEY AND CORNER AUTHENTICATION)

9/13/1996 - Robert Fergot searched for corner and found no evidence. Corner had been obliterated by road construction. He re-established the corner location using 1923 State Highway right-of-way plat. Plat showed the corner fell 23 feet North of Highway "64" centerline in line with fences North and South. Set witness monuments to perpetuate the corner.

9/15/2014 - I visited the corner location prior to the resurfacing of Highway "64" and recovered the Berntsen aluminum monument of record. Recovered three (3) witness monuments and checked the record distances from the previous corner restoration form. Set four (4) Berntsen SDDR-130 witness monuments and returned after construction to confirm that the Berntsen Monument was undisturbed.



CERTIFIED CORRECT:

*Christopher L. Fieri*

CHRISTOPHER L. FIERI S-2954  
Registered Land Surveyor

DATE: 11-18-2014

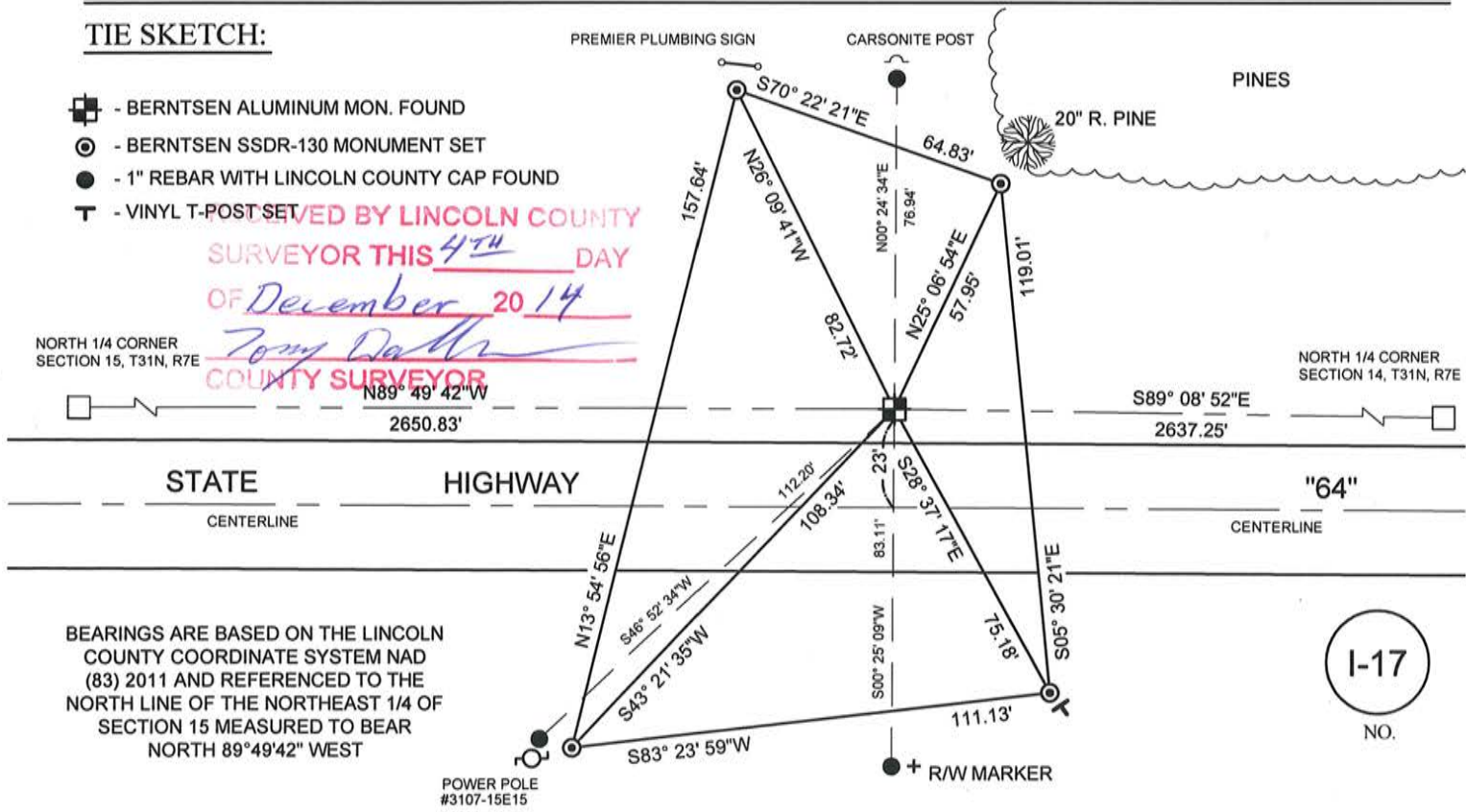
FIELD BOOK NO. 41 PAGE NO. 21

COMPANY RIVERSIDE LAND SURVEYING LLC

## TIE SKETCH:

- BERNTSEN ALUMINUM MON. FOUND
- BERNTSEN SDDR-130 MONUMENT SET
- 1" REBAR WITH LINCOLN COUNTY CAP FOUND
- VINYL T-POST SET

RECOVERED BY LINCOLN COUNTY  
SURVEYOR THIS 4TH DAY  
OF December 20 14  
*Tommy Daulton*  
COUNTY SURVEYOR



BEARINGS ARE BASED ON THE LINCOLN COUNTY COORDINATE SYSTEM NAD (83) 2011 AND REFERENCED TO THE NORTH LINE OF THE NORTHEAST 1/4 OF SECTION 15 MEASURED TO BEAR NORTH 89°49'42" WEST

I-17  
NO.

# U.S. PUBLIC LAND SURVEY MONUMENT RECORD

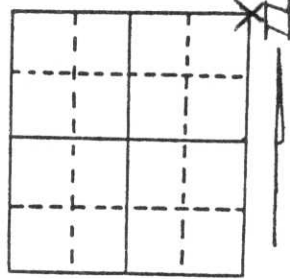
Note: This form is intended and designed to fulfill all requirements of Wisconsin Administrative Code, Chapter A-E 5.02, U.S. Public Land Survey Monument Record (3) (a) (b) (c) (d) (e) (f) (g) (h) (i). An additional sheet may be added if necessary to conform with said requirements.

(a) Corner location: Township 31 North

Range 7 East

Town/City/Village PINE RIVER

County LINCOLN



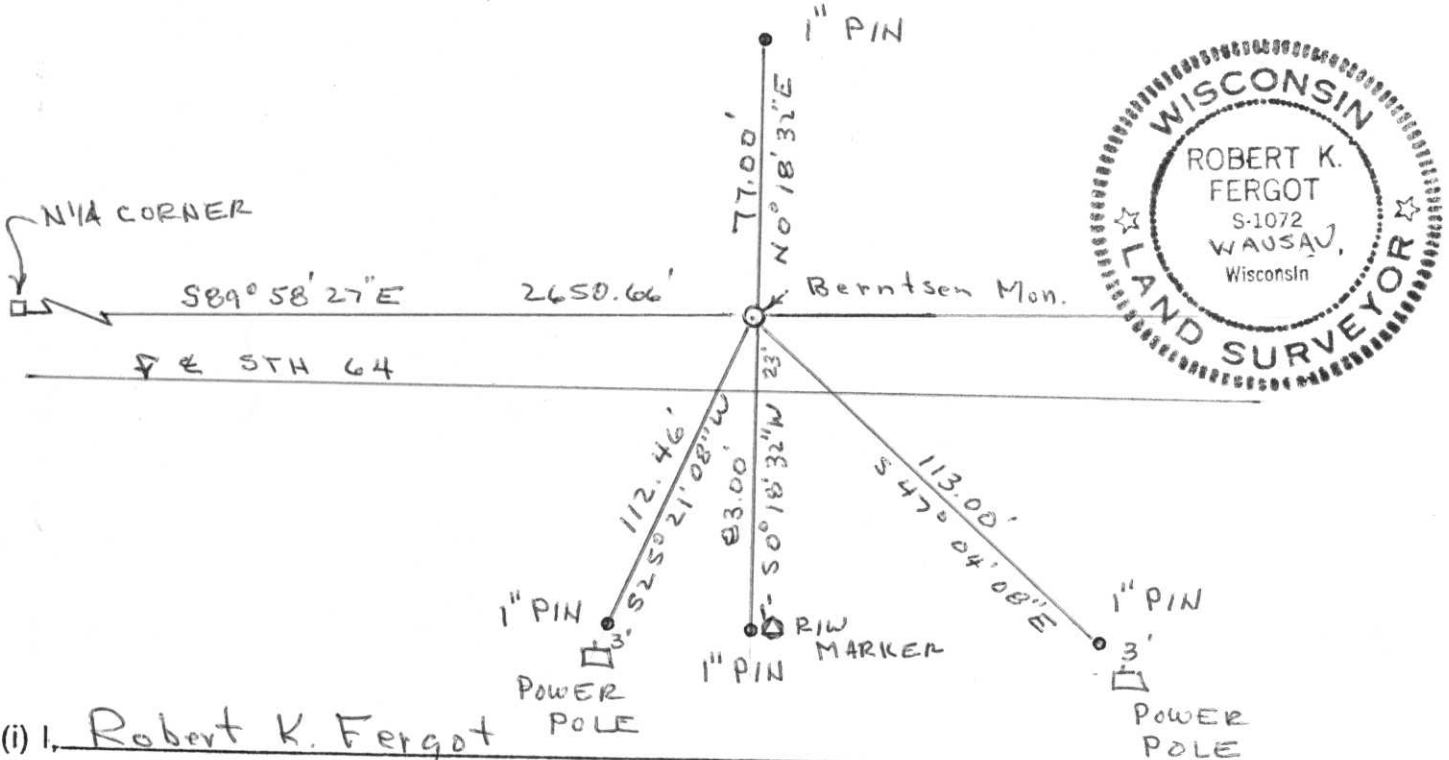
Section 15

(b) (f) (g) (h) Description of monument found at this corner and if it was accepted, state all evidence (material, testimonial, occupational, plats, records, other monuments) used as a basis for accepting. If not accepted or if nothing was found, state evidence used as basis for establishing location. If reestablished through lost corner proportionate methods, indicate all monuments, distances and directions used to establish.

Evidence showed corner was obliterated during construction of S.T.H. 64, No evidence of corner found.  
 Re established corner location using STH 64 RIW PLAT of 1923, showing corner 23 feet north of  $\epsilon$  in line with fence lines north and south.

**RECEIVED AT LINCOLN COUNTY  
 COURTHOUSE THIS 25th DAY  
 OF Sept 1996  
*Pat Priebe*  
 TAX DESCRIPTION OFFICE**

(c) (d) (e) Plan view of corner with ties to at least 4 witness monuments. If in disagreement with previously established corner, show the distances between the two corners and also indicate the ties to the disputed corner.



(i) I, Robert K. Fergot  
 (type or print name) certify that the corner location on this record was determined by me or under my direction and control and that this U.S. Public Land Survey Monument Record is correct and complete to the best of my knowledge and belief.

Robert K. Fergot                      September 13, 1996  
 Signature                                      Date

Index No. I-17