

LINCOLN COUNTY U.S. PUBLIC LAND SURVEY MONUMENT LOCATION RECORD

SECTION 15
TOWNSHIP 31 N
RANGE 7 E

I-13
NO.

LANDMARK BENCHMARK FOUND
CORNER IDENTITY: NORTHWEST CORNER SECTION 15 (SNM-1 NAIL) SET
RE-SET
RE-TIED

LINCOLN COUNTY COORDINATE: N: 121660.936
E: 412660.912

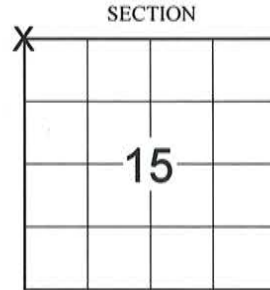
ELEVATION-(FEET): _____ DATUM: _____

WEATHER: CLEAR AND SUNNY

DATE OF SURVEY: 9/15/2014 TEMPERATURE: 65 °F

SURVEY PARTY: KEITH WALKOWSKI AND CHRIS FIERI

PINE RIVER
CITY, VILLAGE, TOWN



LOCATION
(Indicated By)



BASIS FOR MONUMENT LOCATION:

(DESCRIBE METHOD OF SURVEY AND CORNER AUTHENTICATION)

6/20/1991 - David Osterbrink researched at the County Highway Department and found no information for this corner location. Rhinelander DOT plans called for corner to fall in the centerline of Highway "64". CSM Vol. 2 Pg.397 by Abendroth is tied to this corner by an existing P.K. Nail. The highway had been resurfaced and Osterbrink did not find the P.K. Nail of record. Osterbrink measured to CSM corners and set a P.K. Nail at the corner. Fit centerlines of roads well. Set witness monuments to perpetuate the corner location.

2013 - REI Engineering found no evidence of the P.K. Nail at the corner. Reset a P.K. Nail at the corner location using existing witness monuments.

9/15/2014 - I visited the corner location prior to the resurfacing of Highway "64" and recovered the P.K. Nail of record. Measured to existing witness monuments which checked well. Set four (4) Berntsen witness monuments and returned after construction to set a Berntsen SNM-1 Nail at the corner location.

CERTIFIED CORRECT:

Christopher L. Fieri

CHRISTOPHER L. FIERI S-2954

Registered Land Surveyor

DATE: 11-18-2014

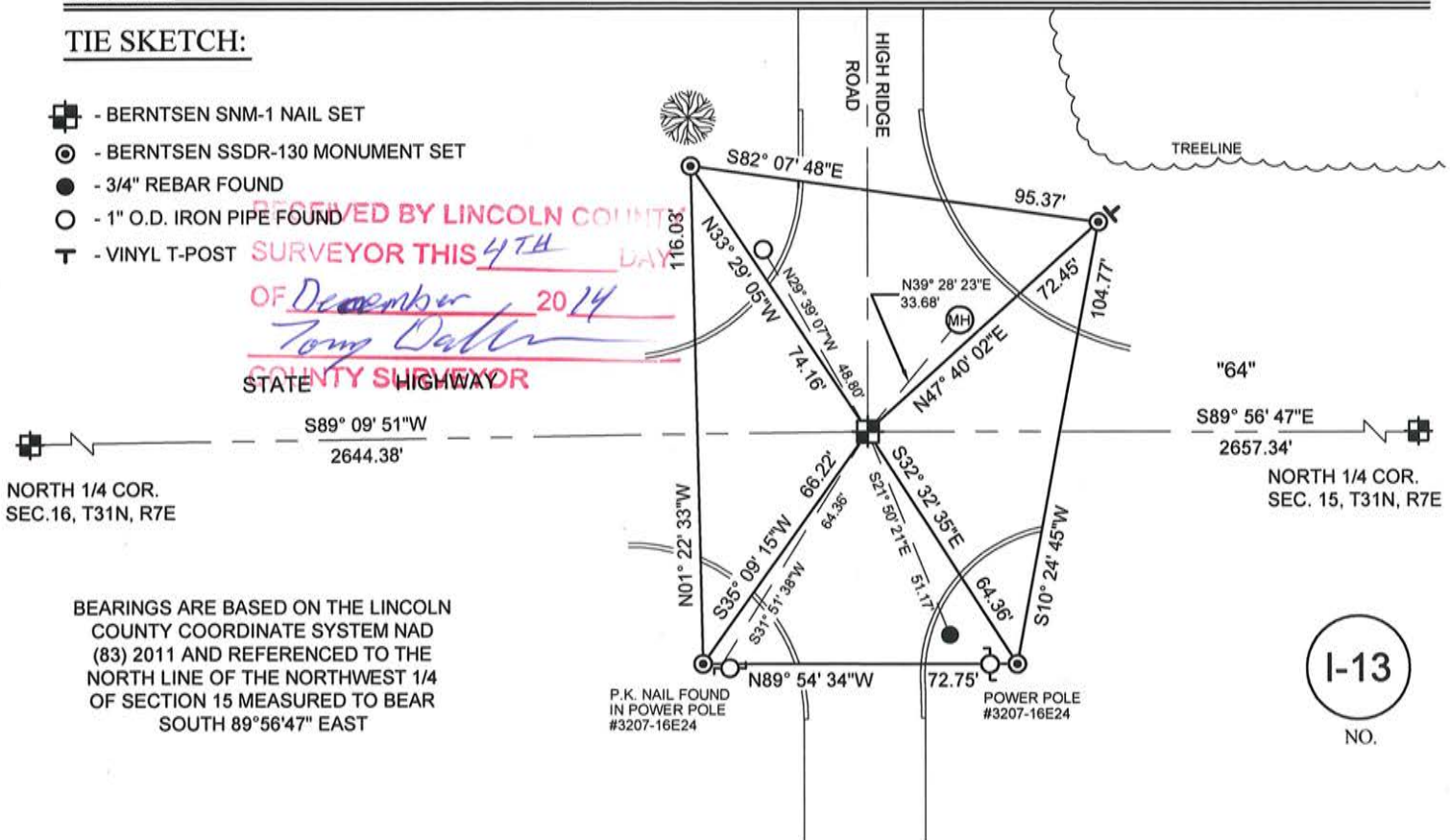
FIELD BOOK NO. 41 PAGE NO. 22

COMPANY RIVERSIDE LAND SURVEYING LLC

TIE SKETCH:

- BERNTSEN SNM-1 NAIL SET
- BERNTSEN SDDR-130 MONUMENT SET
- 3/4" REBAR FOUND
- 1" O.D. IRON PIPE FOUND
- VINYL T-POST

RECEIVED BY LINCOLN COUNTY
SURVEYOR THIS 4TH DAY
OF December 2014
Tom Dallen
COUNTY SURVEYOR



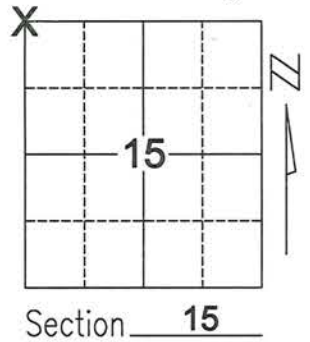
BEARINGS ARE BASED ON THE LINCOLN COUNTY COORDINATE SYSTEM NAD (83) 2011 AND REFERENCED TO THE NORTH LINE OF THE NORTHWEST 1/4 OF SECTION 15 MEASURED TO BEAR SOUTH 89°56'47" EAST

I-13
NO.

U.S. PUBLIC LAND SURVEY MONUMENT RECORD

Note: This form is intended and designed to fulfill all requirements of Wisconsin Administrative Code, Chapter A-E 7.08, U.S. Public Land Survey Monument Record (3)(a)(b)(c)(d)(e)(f)(g)(h)(i). An additional sheet may be added if necessary to conform with said requirements.

(a) Corner location: Township 31 North
 Range 7 East
 Town/City/Village PINE RIVER
 County LINCOLN



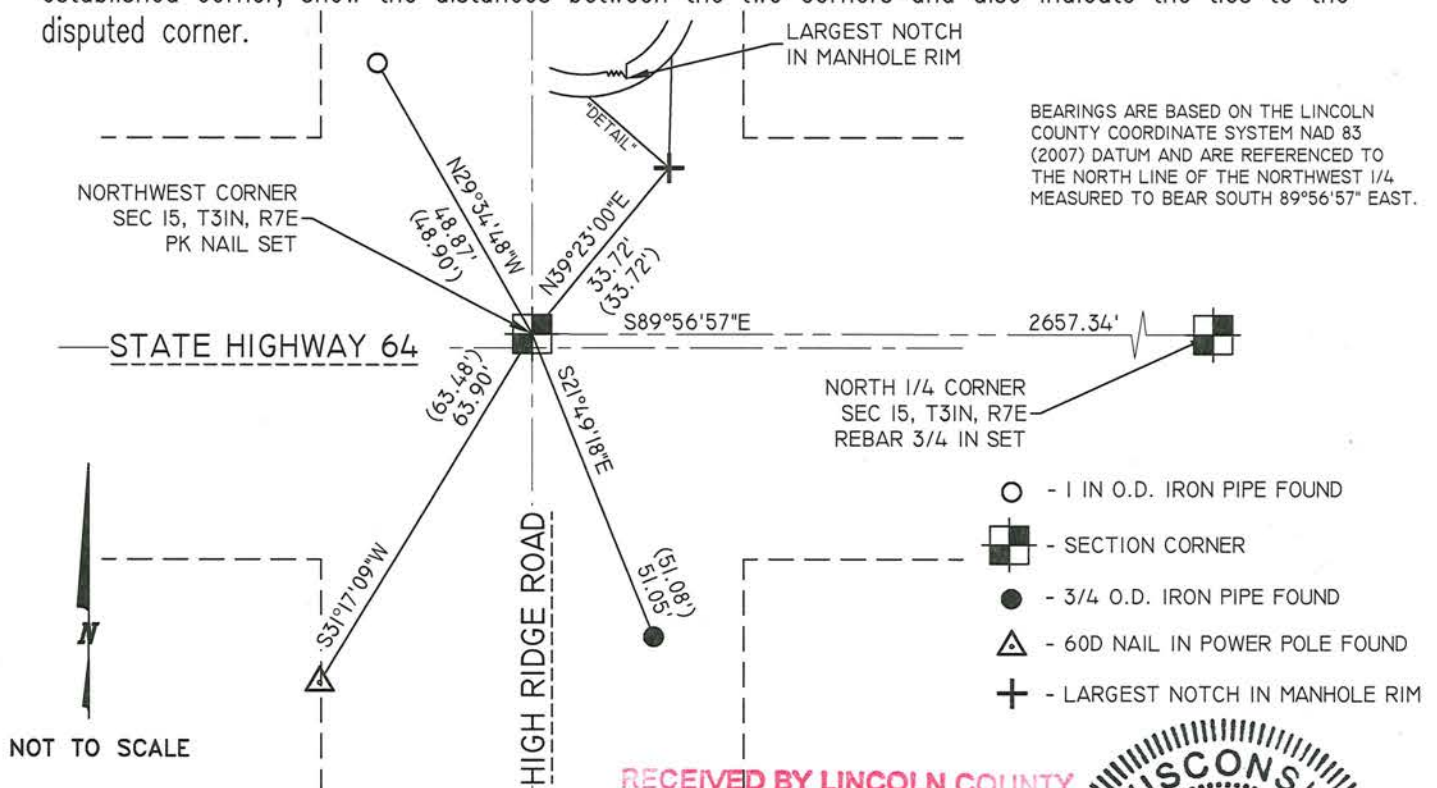
Section 15

(b)(f)(g)(h) Description of monument found at this corner and if it was accepted, state all evidence (material, testimonial, occupational, plats, records, other monuments) used as a basis for accepting. If not accepted or if nothing was found, state evidence used as basis for establishing location. If reestablished through lost corner proportionate methods, indicate all monuments, distances and directions used to establish.

1991- DAVID OSTERBRINK RESEARCHED COUNTY HIGHWAY DEPARTMENT AND HAD NO INFORMATION TO CORNER LOCATION. RHINELANDER DOT HIGHWAY PLANS CALLED FOR CORNER TO FALL ON CENTER-LINE OF HIGHWAY. CSM VOL 2, PAGE 397 BY ABENDROTH IS TIED TO THIS CORNER BY AN "EXISTING PK NAIL". FOUND NO EVIDENCE OF PK NAIL, HIGHWAY HAD BEEN RE-PAVED. TIED INTO SURVEY AND RESET PK NAIL AT CORNER. PK NAIL FITS CENTERLINES QUITE WELL HELD AS CORNER. TIED OUT. COULD NOT SET ANYTHING MORE SUBSTANTIAL AT CORNER LOCATION BECAUSE OF CONCRETE UNDER BLACKTOP, AND AREA IS JUST BEYOND CREST OF HILL. TRAFFIC WOULD NOT SLOW DOWN.

2013- REI ENGINEERING FOUND NO EVIDENCE OF OSTERBRINK'S PK NAIL. RESET PK AT CORNER FROM EXISTING TIES.

(c)(d)(e) Plan view of corner with ties to at least 4 witness monuments. If in disagreement with previously established corner, show the distances between the two corners and also indicate the ties to the disputed corner.



BEARINGS ARE BASED ON THE LINCOLN COUNTY COORDINATE SYSTEM NAD 83 (2007) DATUM AND ARE REFERENCED TO THE NORTH LINE OF THE NORTHWEST 1/4 MEASURED TO BEAR SOUTH 89°56'57" EAST.

- - 1 IN O.D. IRON PIPE FOUND
- - SECTION CORNER
- - 3/4 O.D. IRON PIPE FOUND
- △ - 60D NAIL IN POWER POLE FOUND
- +

RECEIVED BY LINCOLN COUNTY SURVEYOR THIS 20TH DAY OF January 2014
Joshua W. Prentice
 COUNTY SURVEYOR



Index No.

I-13

(i) I, Joshua W. Prentice, RLS S-2852, certify that the corner location on this record was determined by me or under my direction and control and that this U.S. Public Land Survey Monument Record is correct and complete to the best of my knowledge and belief.

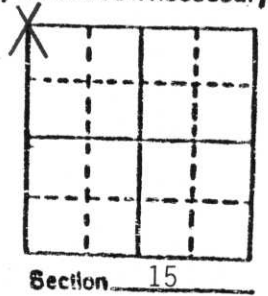
Signature *Joshua W. Prentice* Date 1-16-2014

U.S. PUBLIC LAND SURVEY MONUMENT RECORD

Note: This form is intended and designed to fulfill all requirements of Wisconsin Administrative Code, Chapter A-E 5.02, U.S. Public Land Survey Monument Record (3) (a) (b) (c) (d) (e) (f) (g) (h) (i). An additional sheet may be added if necessary to conform with said requirements.

(a) Corner location: Township 31 North
 Range 7 East

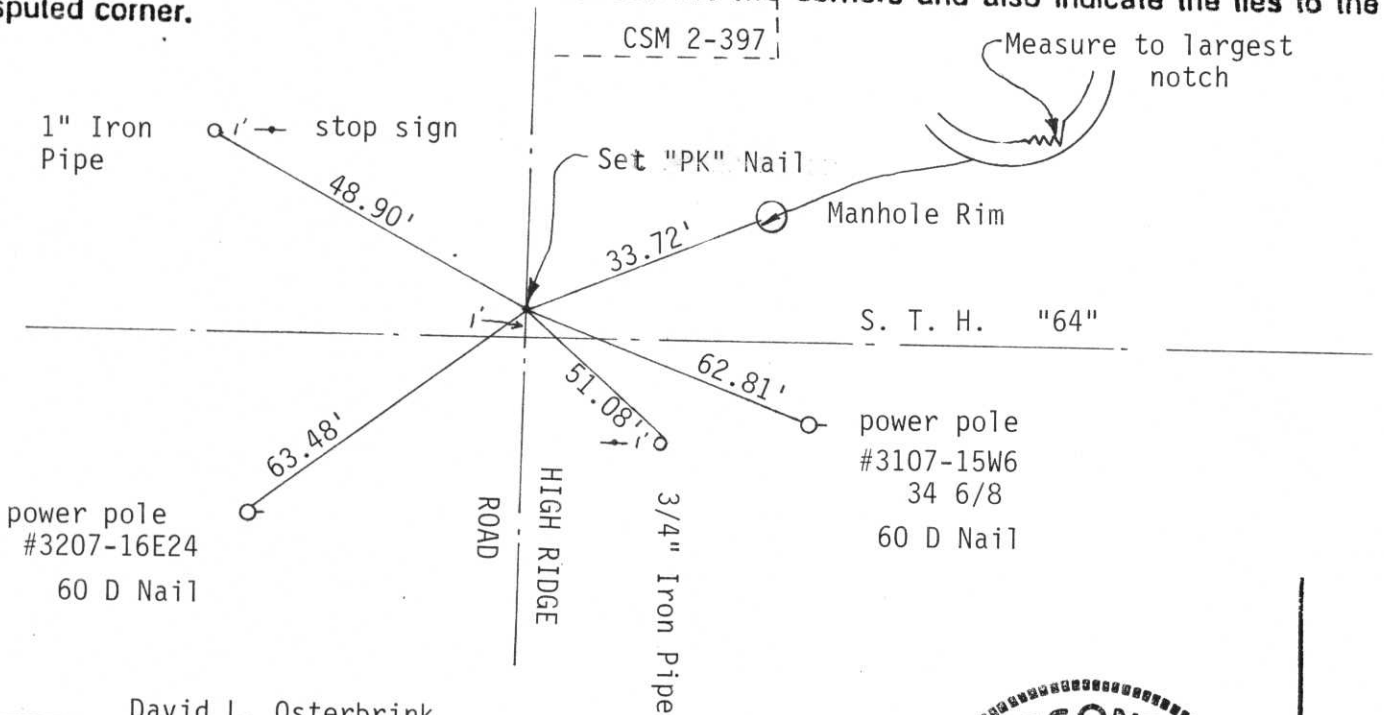
Town Pine River
 County Lincoln



b) (f) (g) (h) Description of monument found at this corner and if it was accepted, state all evidence (material, testimonial, occupational, plats, records, other monuments) used as a basis for accepting. If not accepted or if nothing was found, state evidence used as basis for establishing location. If reestablished through lost corner proportionate methods, indicate all monuments, distances and directions used to establish.

County Hwy. Dept. had no information as to corner location. Rhinelander DOT Hwy. plans called for corner to fall on center line of Hwy. CSM Vol 2, Pg 397 by Abendroth, is tied to this corner by an "existing PK nail". Found no evidence of PK nail, Hwy had been repaved. Tied into survey, and reset PK nail at corner. PK nail fits centerlines quite well. Held as corner. Tied out. Could not set anything more substantial at corner location because of concrete under blacktop, and area is just beyond crest of hill. Traffic would not slow down.

c) (d) (e) Plan view of corner with ties to at least 4 witness monuments. If in disagreement with previously established corner, show the distances between the two corners and also indicate the ties to the disputed corner.



(i) I, David L. Osterbrink
 (type or print name) certify that the corner location on this record was determined by me or under my direction and control and that this U.S. Public Land Survey Monument Record is correct and complete to the best of my knowledge and belief.

David L. Osterbrink 6-20-91
 Signature Date



Index No. 1-13

RECEIVED JUN 25 1991