

LINCOLN COUNTY U.S. PUBLIC LAND SURVEY MONUMENT LOCATION RECORD

SECTION 17
TOWNSHIP 31 N
RANGE 7 E

1-9
NO.

LANDMARK BENCHMARK
CORNER IDENTITY: NORTHEAST CORNER SECTION 17 (SNM-1 NAIL)
FOUND SET
RESET RE-TIED

LINCOLN COUNTY COORDINATE: N: 121583.8090'
E: 407373.3170'

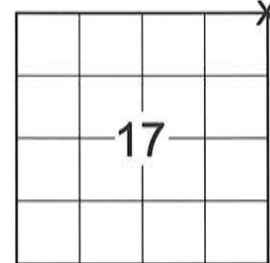
ELEVATION-(FEET): _____ DATUM: _____

WEATHER: CLEAR AND SUNNY

DATE OF SURVEY: 9/15/2014 TEMPERATURE: 65 °F

SURVEY PARTY: KEITH WALKOWSKI AND CHRIS FIERI

PINE RIVER
CITY, VILLAGE, TOWN



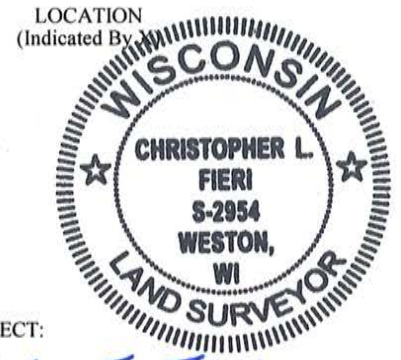
BASIS FOR MONUMENT LOCATION:
(DESCRIBE METHOD OF SURVEY AND CORNER AUTHENTICATION)

1852 - A.G. Ellis established the original corner.

11/15/1982 - Sheridan Schwark re-established the corner while performing certified survey map number 380.

6/17/1998 - Edwin Abendroth re-established the corner using CSM 380 and set four witness monuments to perpetuate the corner location.

9/15/2014 - I visited the corner location prior to the resurfacing of Highway "64" and recovered the survey nail of record. Recovered all four (4) witness monuments and checked the record distances from the previous corner restoration form. Set four (4) Bernsten SSDR-130 witness monuments and returned after construction to set a Bernsten SNM-1 Nail at the corner location.



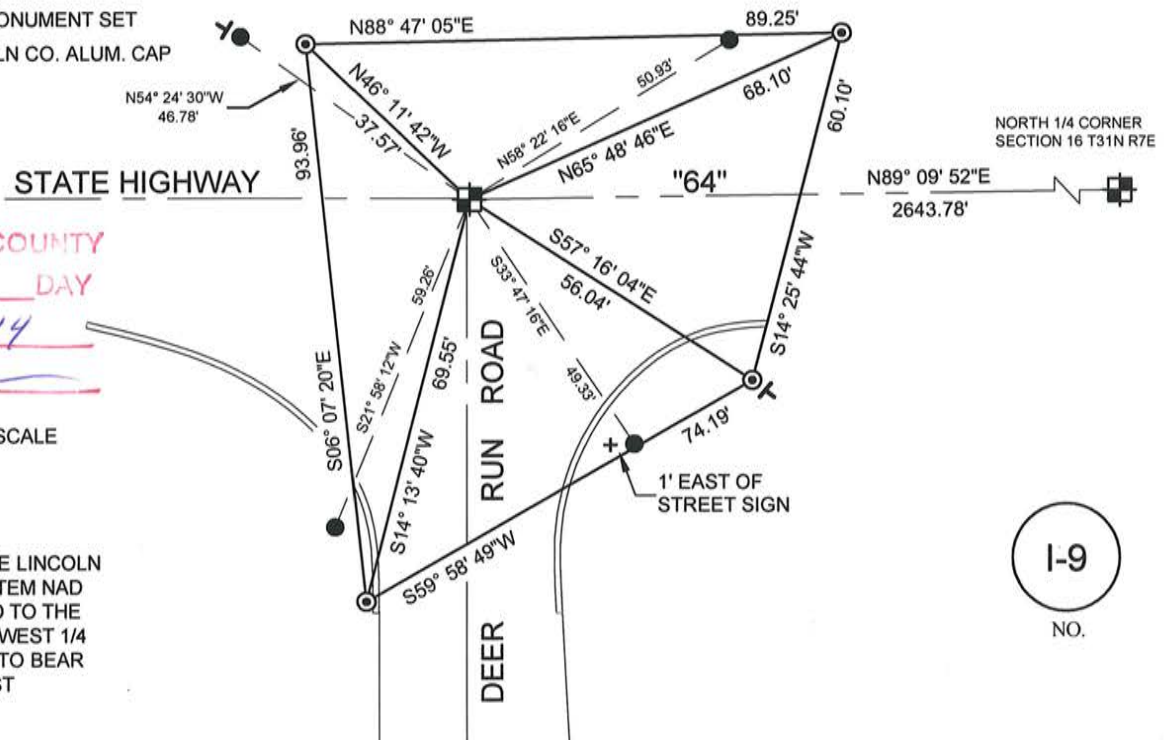
CERTIFIED CORRECT:
Christopher L. Fieri
CHRISTOPHER L. FIERI S-2954
Registered Land Surveyor
DATE: 11-18-2014

FIELD BOOK NO. 41 PAGE NO. 24

COMPANY RIVERSIDE LAND SURVEYING LLC

TIE SKETCH:

- BERNTSEN SNM-1 NAIL SET
- BERNTSEN SSDR-130 MONUMENT SET
- 7/8" REBAR WITH LINCOLN CO. ALUM. CAP
- VINYL T-POST SET



RECEIVED BY LINCOLN COUNTY
SURVEYOR THIS 4TH DAY
OF December 2014
Tony Dalk
COUNTY SURVEYOR
- THIS DRAWING IS NOT TO SCALE

BEARINGS ARE BASED ON THE LINCOLN COUNTY COORDINATE SYSTEM NAD (83) 2011 AND REFERENCED TO THE NORTH LINE OF THE NORTHWEST 1/4 OF SECTION 16 MEASURED TO BEAR NORTH 89°09'52" EAST

1-9
NO.

U.S. PUBLIC LAND SURVEY MONUMENT RECORD

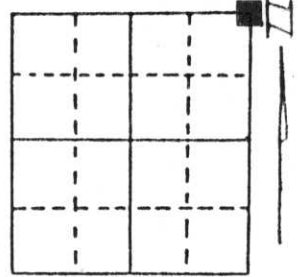
Note: This form is intended and designed to fulfill all requirements of Wisconsin Administrative Code, Chapter A-E 5.02, U.S. Public Land Survey Monument Record (3) (a) (b) (c) (d) (e) (f) (g) (h) (i). An additional sheet may be added if necessary to conform with said requirements.

(a) Corner location: Township 31 North

Range 7 East

Town/City/Village PINE RIVER

County LINCOLN



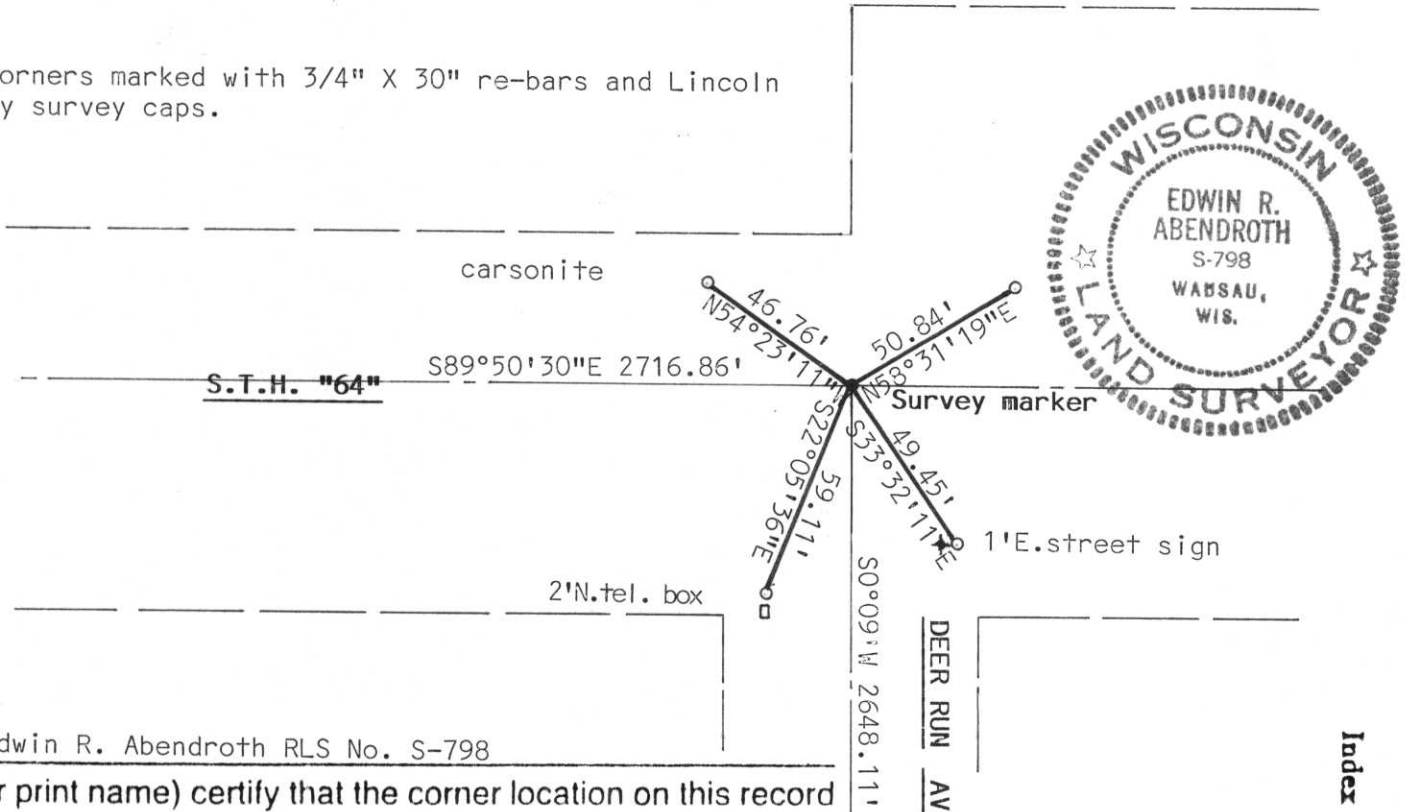
Section 17

(b) (f) (g) (h) Description of monument found at this corner and if it was accepted, state all evidence (material, testimonial, occupational, plats, records, other monuments) used as a basis for accepting. If not accepted or if nothing was found, state evidence used as basis for establishing location. If reestablished through lost corner proportionate methods, indicate all monuments, distances and directions used to establish.

Corner was established by Sheridan D. Schwark dated 11-15-82. Corner set in conjunction with Certified Survey Map No. 380. We reconstructed survey and tie to the NE section corner. We set survey marker at corner and tied same. Corner fell in centerline of S.T.H. "64" and the centerline of Deer Run Ave.

(c) (d) (e) Plan view of corner with ties to at least 4 witness monuments. If in disagreement with previously established corner, show the distances between the two corners and also indicate the ties to the disputed corner.

All corners marked with 3/4" X 30" re-bars and Lincoln county survey caps.



(i) I, Edwin R. Abendroth RLS No. S-798
 (type or print name) certify that the corner location on this record was determined by me or under my direction and control and that this U.S. Public Land Survey Monument Record is correct and complete to the best of my knowledge and belief.

Edwin R. Abendroth 6-17-98
 Signature Date

RECEIVED AT LINCOLN COUNTY
 COURTHOUSE THIS 18th DAY
 OF June 19 98
Pat Linde
 TAX DESCRIPTION OFFICE

Index No. 7-9