

LINCOLN COUNTY U.S. PUBLIC LAND SURVEY MONUMENT LOCATION RECORD

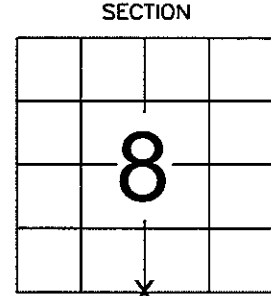
SECTION 8
 TOWNSHIP T31N
 RANGE R7E

1-7
 NO.

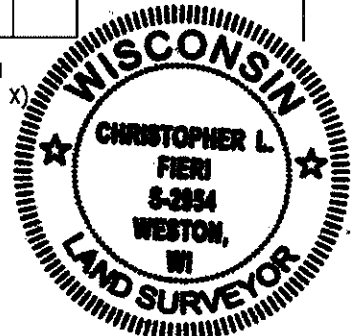
LANDMARK BENCHMARK
 CORNER IDENTITY: SURVEY MARKER PIN (SMP)
 FOUND SET
 RESET RE-TIED

PINE RIVER
 CITY, VILLAGE, TOWN

WEATHER: CLEAR AND SUNNY
 DATE OF SURVEY: 12/20/2012 TEMPERATURE: 40 °F
 SURVEY PARTY: C. FIERI & K. WALKOWSKI



LOCATION
 (Indicated By X)



BASIS FOR MONUMENT LOCATION:

(DESCRIBE METHOD OF SURVEY AND CORNER AUTHENTICATION)

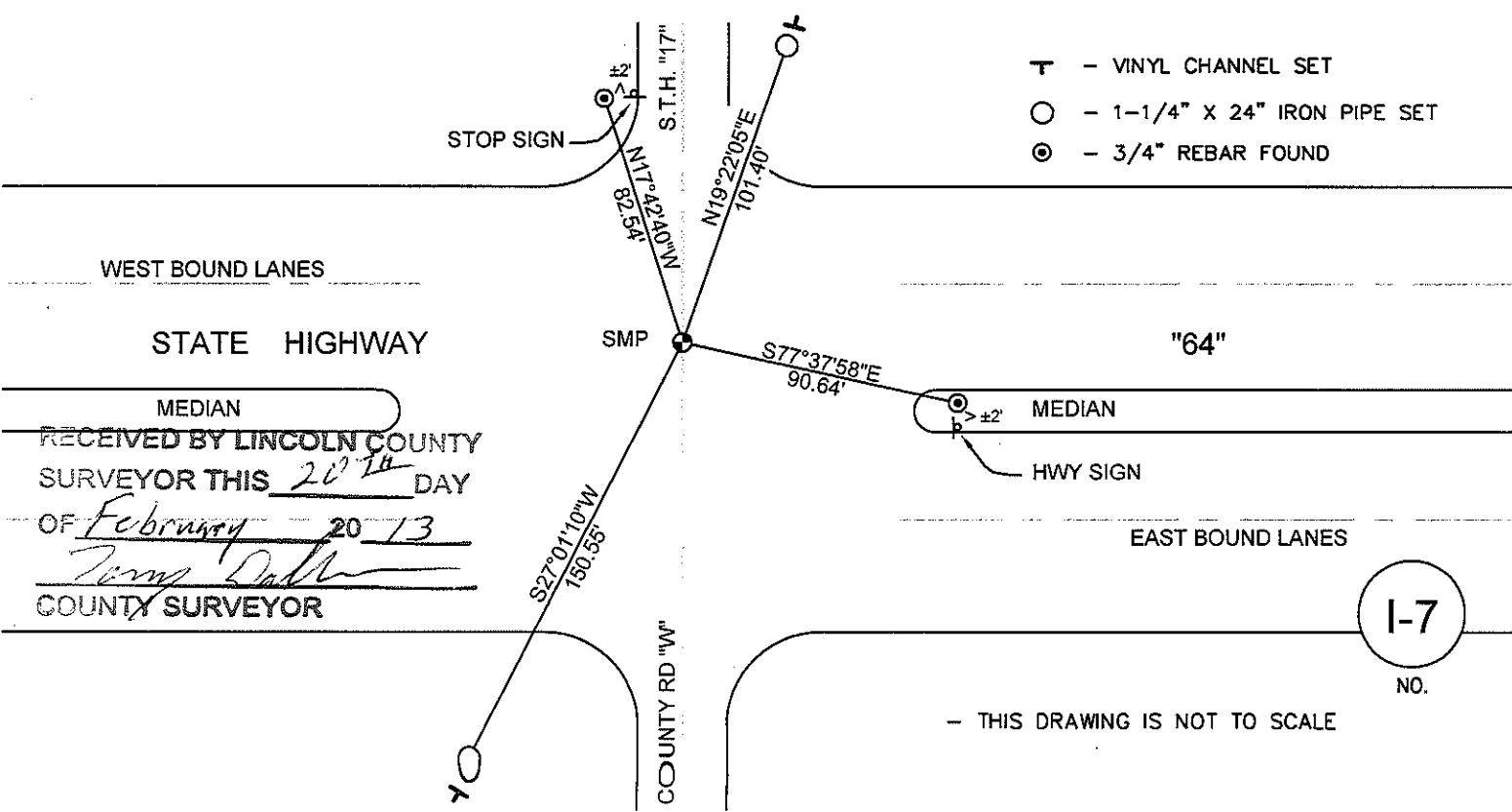
10/6/1976 - D. TLUSTY SET A R.R. SPIKE AT THE CORNER LOCATION. DID NOT TIE OUT THE CORNER.
 5/20/1988 - R. MICHAELS RECOVERED THE R.R. SPIKE OF RECORD SET BY MINK CAPITAL SURVEYING. THE LOCATION OF THE CORNER AGREES WITH THE LOCATION AS SHOWN ON A SURVEY MAP BY CHARLES OFFERMAN DATED DECEMBER 23, 1974 AND REVISED FEB. 27, 1975. THE RAILROAD SPIKE LIES IN THE CENTERLINE OF S.T.H. "17" AND C.T.H. "W". TIED OUT THE CORNER.
 12/20/2012 - K. WALKOWSKI AND I SEARCHED THE INTERSECTION OF HWY "17" AND S.T.H. "64". FOUND NO MONUMENT AT THE CORNER LOCATION. RECOVERED TWO WITNESS MONUMENTS FROM THE PREVIOUS TIESHEET IN GOOD CONDITION. INTERSECTED EXISTING TIE DISTANCES AND SET AN SMP AT THE CORNER LOCATION. COMPARED WITH RECORD DISTANCES TO ADJOINING SECTION CORNERS AND THEY CHECKED WELL. RETIED THE CORNER AS SHOWN BELOW.

CERTIFIED CORRECT:
Christopher L. Fieri
 CHRISTOPHER L. FIERI RLS - 2954
 Registered Land Surveyor
 DATE: 12/20/2012

COMPANY RIVERSIDE LAND SURVEYING LLC

TIE SKETCH:

SHOW MINIMUM OF FOUR (4) HORIZONTAL TIE DISTANCES TO FIXED WITNESS MONUMENTS. DESCRIBE ALL MONUMENTS FOUND OR SET. CORRECT ALL DISTANCES SHOWN TO STANDARD TEMPERATURE OF 68° F.



- T - VINYL CHANNEL SET
- O - 1-1/4" X 24" IRON PIPE SET
- ⊙ - 3/4" REBAR FOUND

RECEIVED BY LINCOLN COUNTY SURVEYOR THIS 20th DAY OF February 20 13
Chris Dahl
 COUNTY SURVEYOR

1-7
 NO.

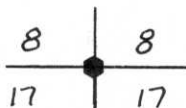
- THIS DRAWING IS NOT TO SCALE

U. S. PUBLIC LAND SURVEY MONUMENT RECORD

INSTRUCTIONS : This record shall show the location of the corner and shall include all of the following nine elements (a through i).

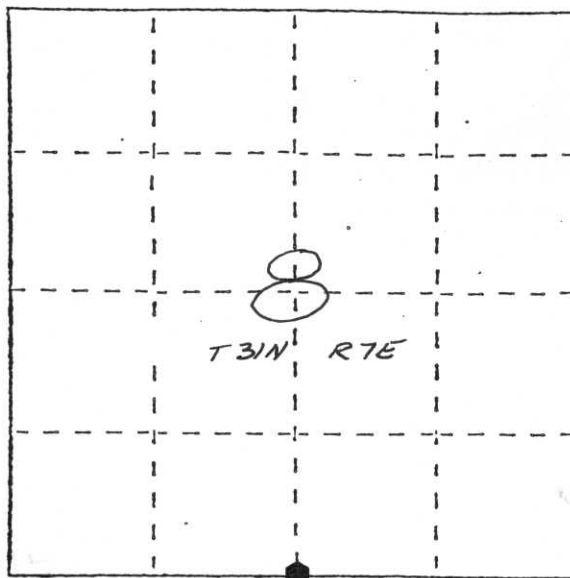
(a) Identify the corner by reference to the U.S. public land survey system.

● = Corner monument restored.



South 1/4 Corner of Section 8,
T31N, R7E, Lincoln County, Wisconsin

Date of Survey: April 7, 1988

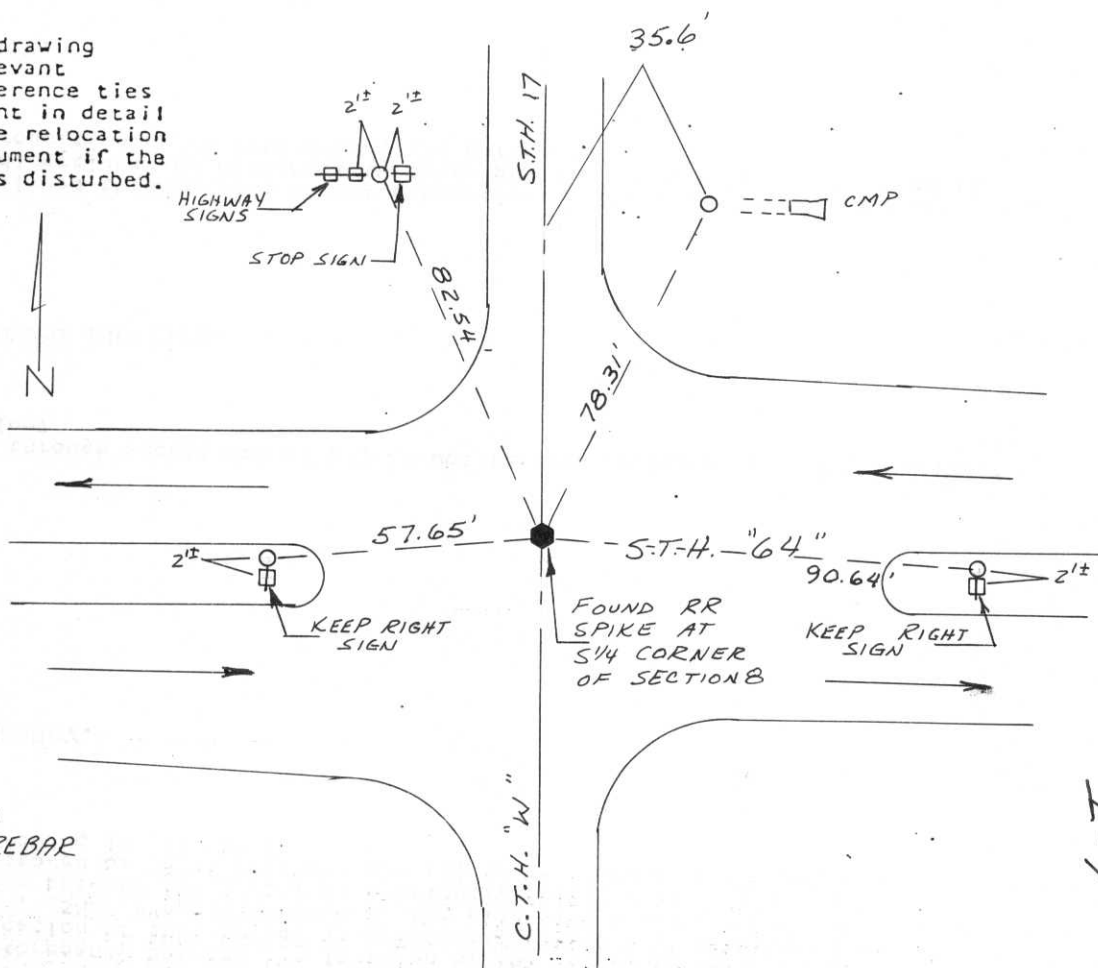


(b) Describe any record evidence, monument evidence, occupational evidence, testimonial evidence or any other material evidence you considered, and whether the monument was found or placed.

I found a railroad spike at the South 1/4 Corner of Section 8, T31N, R7E. This corner was set by Mink Capital Surveying on Oct. 6, 1976. The location of this corner agrees with the location as shown on a survey map by Charles Offerman dated December 23, 1974 and revised Feb. 27, 1975, (survey of a parcel 233' East of the 1/4 corner on the North side of Highway "64"). The railroad spike lies in the centerline of S.T.H. "17" & C.T.H. "W".

(c) In the plan view drawing below, provide reference ties to at least 4 witness monuments, or, if the location is within a municipality, to at least 2 witness monuments. (Witness monuments shall be made of concrete, natural stone, iron or other equally durable material.) Describe witness monuments.

(d) Show a plan view drawing depicting the relevant monuments and reference ties which is sufficient in detail to enable accurate relocation of the corner monument if the corner monument is disturbed. Indicate north.



LEGEND
○ SET 3/4" X 24" REBAR

(e) Describe any material discrepancy between the location of the corner as restored or reestablished and the location of that corner as previously restored or reestablished by distance and direction. Show the discrepancy on the plan view drawing under (d), above. Show the distances between the corner as previously restored or reestablished and (1) the corner as restored or reestablished, and (2) to at least 2 of the witness monuments shown on the drawing in (d), above.

No known discrepancy.

(f) Was the corner restored through acceptance of (1) an obliterated evidence location, or, (2) a found perpetuated location?

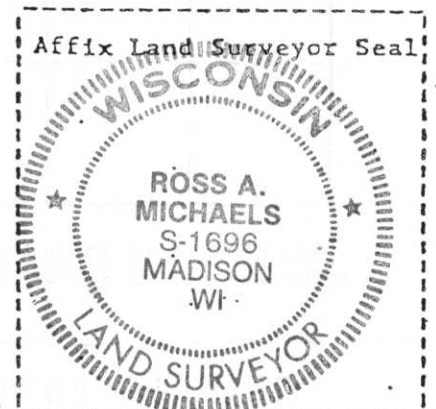
A found perpetuated location.

(g&h) Was the corner reestablished through lost corner proportionate methods? If so, show the method, including the directions and distances to other public land survey corners used as evidence or used for proportioning in determining the corner location?

Not a lost corner.

RECEIVED AT LINCOLN COUNTY
COURTHOUSE THIS 20 DAY
OF May 19 88
Pat Priebe
TAX DESCRIPTION OFFICE

(1) I, Ross A. Michaels
(type or print name) certify that the corner location shown on this record was determined by me or under my direction and control and that this U.S. Public Land Survey Monument Record is correct and complete to the best of my knowledge and belief.



88

SURVEY MONUMENT LOCATION RECORD

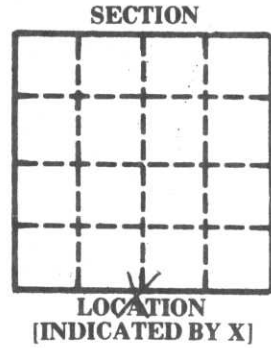
LANDMARK BENCHMARK

FOUND
 SET
 RE-SET
 RE-TIED

SECTION 8
 TOWNSHIP 31
 RANGE 7E
LINCOLN
 [CITY, VILLAGE, COUNTY]



CORNER IDENTITY RR SPIKE S 1/4 CORNER
 DATE OF SURVEY OCT. 6 1976
 WEATHER CLOUDY + COOL
 TEMPERATURE 45°±
 SURVEY PARTY D. TUSTY M. HENRICH'S



BASIS FOR MONUMENT LOCATION

DESCRIBE METHOD OF SURVEY AND CORNER AUTHENTICATION

TIE SKETCH

SHOW HORIZONTAL TIE DISTANCES TO FIXED WITNESS MONUMENTS. DESCRIBE ALL MONUMENTS FOUND OR SET.

SET RR SPIKE FOR CORNER. NOTHING TO TIE TO AROUND THE AREA

RECEIVED AT LINCOLN COUNTY
 COURTHOUSE THIS _____ DAY
 OF _____ 19____
 TAX DESCRIPTION OFFICE

6-7