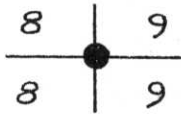


U. S. PUBLIC LAND SURVEY MONUMENT RECORD

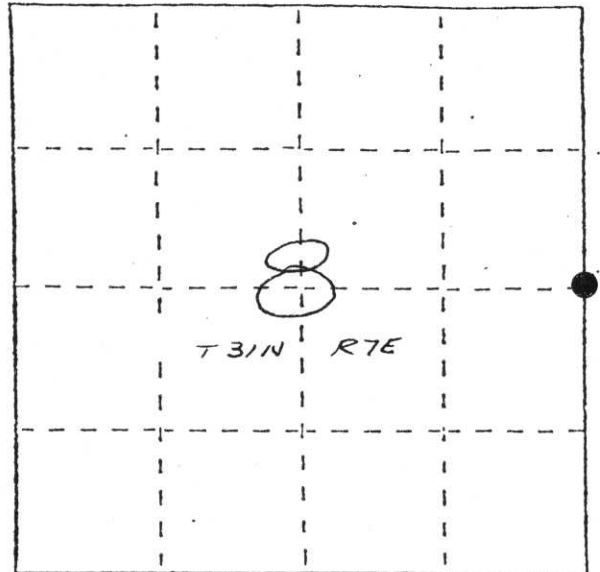
INSTRUCTIONS: This record shall show the location of the corner and shall include all of the following nine elements (a through i).

- (a) Identify the corner by reference to the U.S. public land survey system.
 ● = Corner monument restored.



East 1/4 Corner of Section 8,
 T31N, R7E, Lincoln County, Wisconsin

Date of Survey: April 6, 1988



- (b) Describe any record evidence, monument evidence, occupational evidence, testimonial evidence or any other material evidence you considered, and whether the monument was found or placed.

I found a 2" diameter iron pipe at the East 1/4 Corner of Section 8, T31N, R7E. This pipe was set by Robert H. Winot as part of his survey for the plat of Zastrowland. This pipe is in the occupied East-West fence line as shown below. I accepted the location of this pipe as the East 1/4 corner.

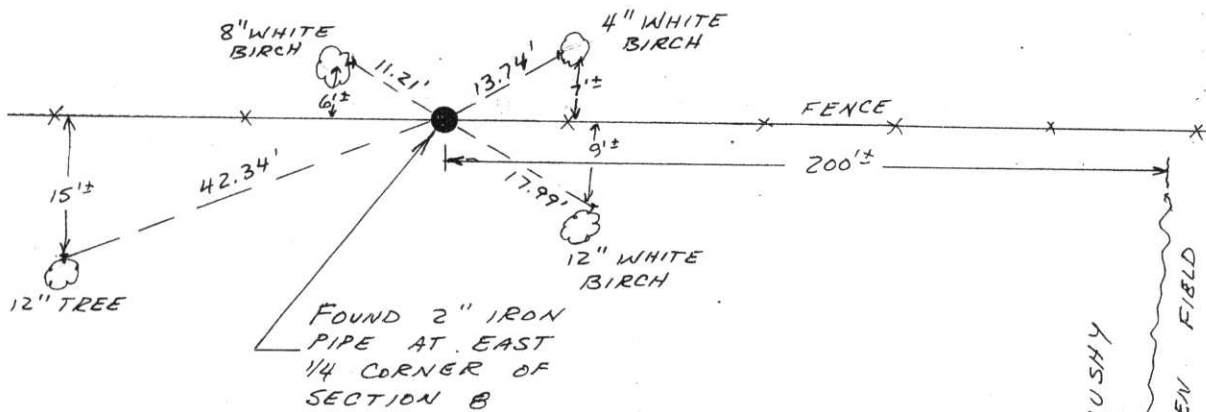
S-2014 On 9-23-03 I paced into woods, along fence wire on ground. Near 200 feet,
 D. I found a 1-1/4" iron pipe laying on the ground. I found 3 Popple trees,
 Osterbrink at distances shown for "white Birch" on this tie sheet. They all had old blaze marks on them. Pulled record distances, and reset 1-1/4" iron pipe. There was remnants of an old fence going North at this point. I went to County Surveyors Office, Tony was not in. They would not give me monuments to retie this corner. They did give me a white fiberglass post which I set.

- (c) In the plan view drawing below, provide reference ties to at least 4 witness monuments, or, if the location is within a municipality, to at least 2 witness monuments. (Witness monuments shall be made of concrete, natural stone, iron or other equally durable material.) Describe witness monuments.

- (d) Show a plan view drawing depicting the relevant monuments and reference ties which is sufficient in detail to enable accurate relocation of the corner monument if the corner monument is disturbed. Indicate north.

RECEIVED AT LINCOLN COUNTY
 COURTHOUSE THIS 30TH DAY
 OF September 20 03
Tony Dahl
 LAND INFORMATION OFFICE

NOTE: ALL TIES ARE NAILS
 IN BLAZE IN TREE

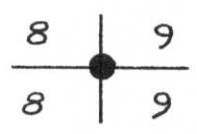


BRUSHY OPEN FIELD
 6-6

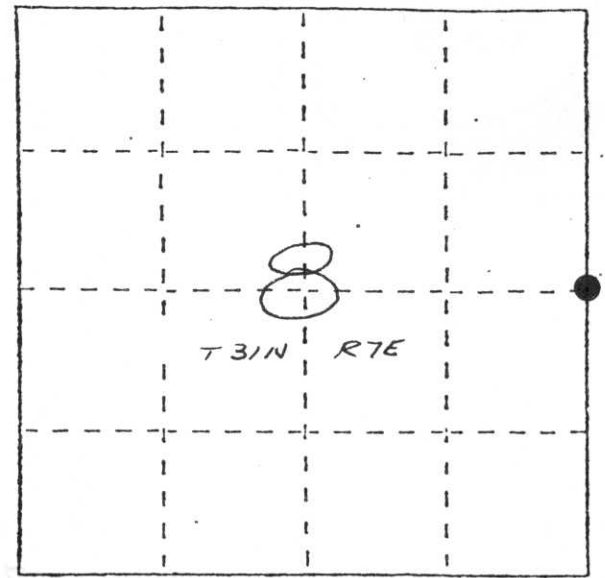
U. S. PUBLIC LAND SURVEY MONUMENT RECORD

INSTRUCTIONS: This record shall show the location of the corner and shall include all of the following nine elements (a through i).

- (a) Identify the corner by reference to the U.S. public land survey system.
 ● = Corner monument restored.



East 1/4 Corner of Section 8,
 T31N, R7E, Lincoln County, Wisconsin
 Date of Survey: April 6, 1988



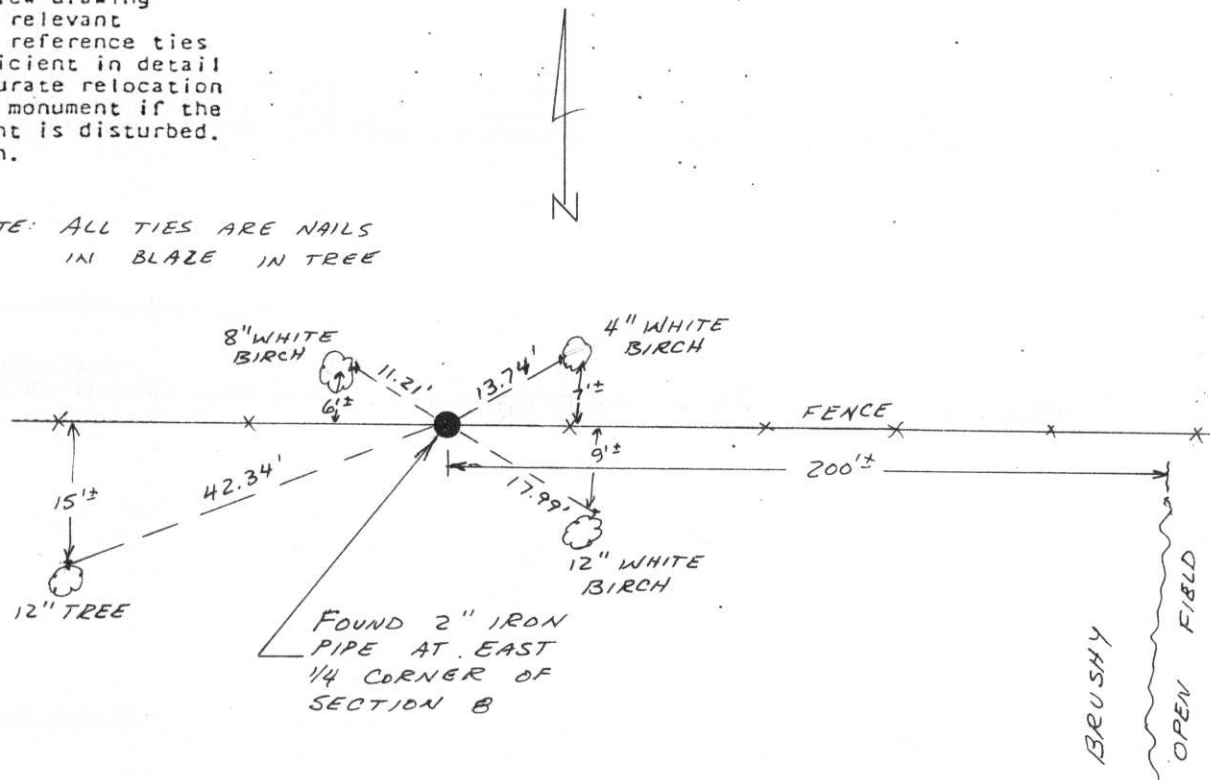
- (b) Describe any record evidence, monument evidence, occupational evidence, testimonial evidence or any other material evidence you considered, and whether the monument was found or placed.

I found a 2" diameter iron pipe at the East 1/4 Corner of Section 8, T31N, R7E. This pipe was set by Robert H. Winot as part of his survey for the plat of Zastrowland. This pipe is in the occupied East-West fence line as shown below. I accepted the location of this pipe as the East 1/4 corner.

- (c) In the plan view drawing below, provide reference ties to at least 4 witness monuments, or, if the location is within a municipality, to at least 2 witness monuments. (Witness monuments shall be made of concrete, natural stone, iron or other equally durable material.) Describe witness monuments.

- (d) Show a plan view drawing depicting the relevant monuments and reference ties which is sufficient in detail to enable accurate relocation of the corner monument if the corner monument is disturbed. Indicate north.

NOTE: ALL TIES ARE NAILS IN BLAZE IN TREE



BRUSHY
6-6 OPEN FIELD

(c) Describe any material discrepancy between the location of the corner as restored or reestablished and the location of that corner as previously restored or reestablished by distance and direction. Show the discrepancy on the plan view drawing under (d), above. Show the distances between the corner as previously restored or reestablished and (1) the corner as restored or reestablished, and (2) to at least 2 of the witness monuments shown on the drawing in (d), above.

No known discrepancy.

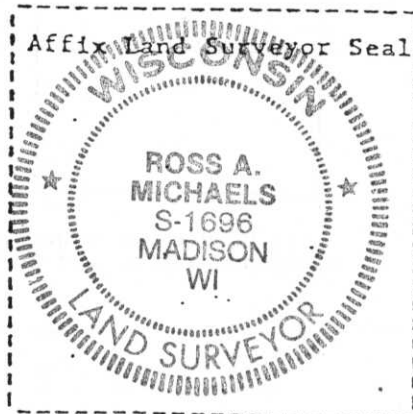
(f) Was the corner restored through acceptance of (1) an obliterated evidence location, or, (2) a found perpetuated location?

A found perpetuated location.

(g&h) Was the corner reestablished through lost corner proportionate methods? If so, show the method, including the directions and distances to other public land survey corners used as evidence or used for proportioning in determining the corner location?

Not a lost corner.

RECEIVED AT LINCOLN COUNTY
COURTHOUSE THIS 20 DAY
OF May 1988
Pat Mueller
TAX DESCRIPTION OFFICE



(1) I, Ross A. Michaels
(type or print name) certify that the corner location shown on this record was determined by me or under my direction and control and that this U.S. Public Land Survey Monument Record is correct and complete to the best of my knowledge and belief.

hals

1988





