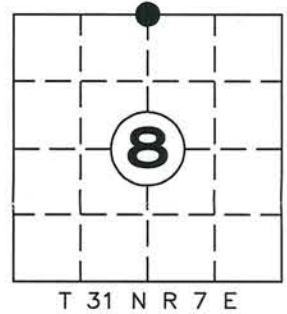


U.S. PUBLIC LAND SURVEY MONUMENT RECORD

NOTE: THIS FORM IS INTENDED AND DESIGNED TO FULFILL ALL REQUIREMENTS OF WISCONSIN ADMINISTRATIVE CODE CHAPTER A-E 7.08 U.S. PUBLIC LAND SURVEY MONUMENT RECORD (3) (a)(b)(c)(d)(e)(f)(g)(h)(i). AN ADDITIONAL SHEET MAY BE ADDED IF NECESSARY TO CONFIRM WITH SAID REQUIREMENTS.

(a) TYPE OF MONUMENT: BERNTSEN SURVEY NAIL
 N¼ CORNER SECTION 8 TOWNSHIP 31 NORTH, RANGE 7 EAST
 TOWN OF: PINE RIVER, LINCOLN COUNTY
 LINCOLN COUNTY COORDINATES:
 NORTHING: 126866.823
 EASTING: 404668.902



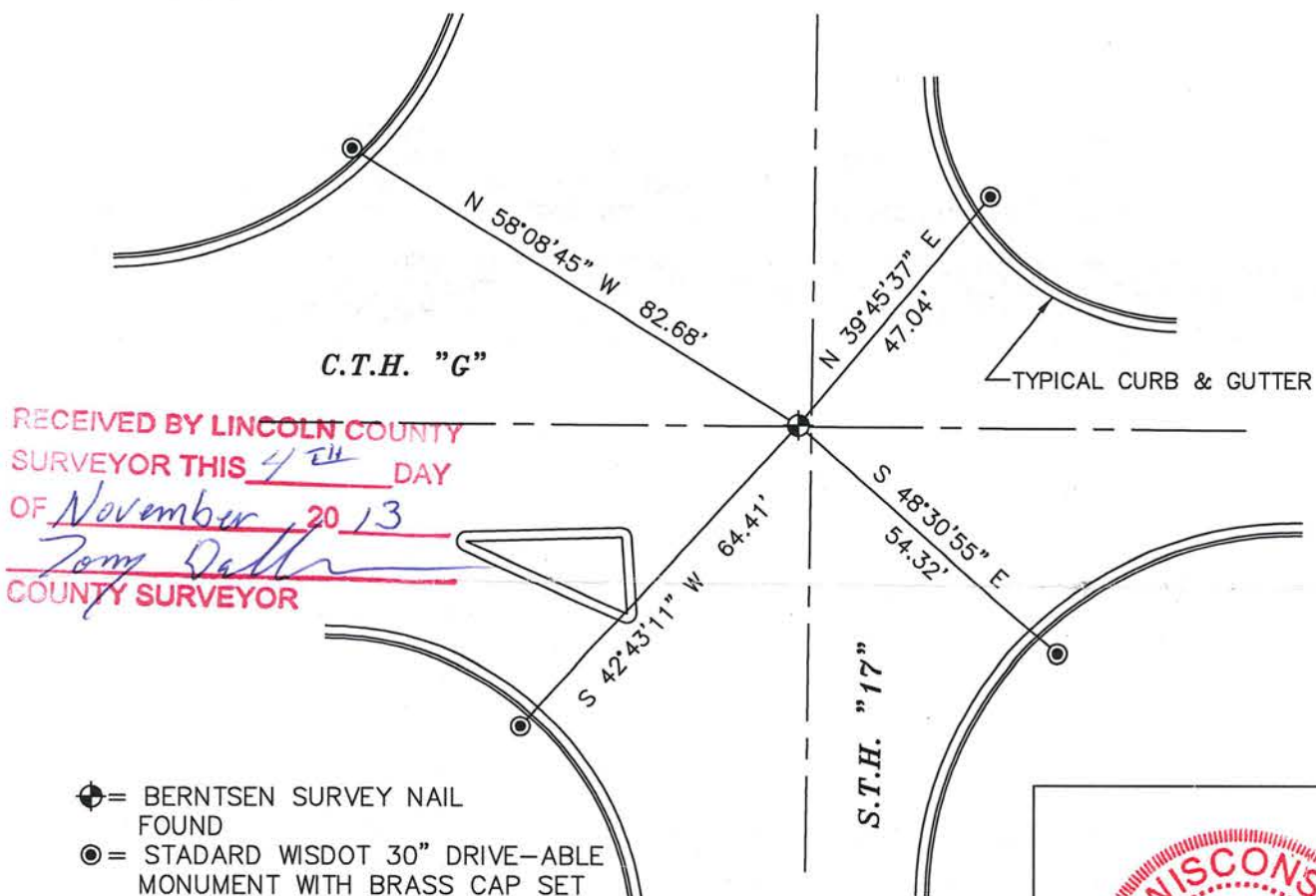
(b) HISTORY OF ORIGINAL CORNER:
 ORIGINAL SURVEYOR: A.G. ELLIS, F.S. ELLIS, FEB. 1852 - MAR. 1852
 SET POST, HEMLOCK 14 N27E 9, DO 14 S1E 47

(f)(g)(h) DESCRIPTION OF MONUMENT FOUND AT THIS CORNER AND IF IT WAS ACCEPTED STATE ALL EVIDENCE (MATERIAL, TESTIMONIAL, OCCUPATIONAL, PLATS, RECORDS, OTHER MONUMENTS) USED AS A BASIS FOR ESTABLISHING LOCATION. IF REESTABLISHED THROUGH LOST CORNER PROPORTIONATE METHODS, INDICATE ALL MONUMENTS, DISTANCES, AND DIRECTIONS USED TO ESTABLISH. INDICATE TYPE OF MONUMENT AND SIGN POST FOUND OR SET.

9 JUNE 1970: SURVEY NOTES ON FILE CALL FOR A R.R. SPIKE 6" WEST OF PAINT STRIPE
 6 OCT 1976: D. TLUSTY CALLS FOR P.K. NAIL FOUND
 4-11-77: WISDOT SURVEY NOTES CALL FOR R.R. SPIKE IN PAVEMENT
 10-26-06 RLS 2357: RECONSTRUCTION OF STH "17" DESTROYED THE EXISTING CORNER AND TIES. I RESTORED THE NORTH ¼ CORNER OS SECTION 8 BY USING COORDINATES ESTABLISHED PRIOR TO HIGHWAY CONSTRUCTION AND SET NEW TIES. N: 126866.82 E: 404668.95

14 OCT. 2013: PRIOR TO STH "17" & C.T.H. "G" ROAD CONSTRUCTION PROJECT FOUND AND VERIFIED BERNTSEN SURVEY NAIL AT CORNER LOCATION. AFTER COMPLETION OF ROAD CONSTRUCTION VERIFIED BERNTSEN SURVEY NAIL AND SET FOUR NEW WITNESS MONUMENTS

(c)(d)(e) PLAN VIEW OF CORNER WITH TIES TO AT LEAST FOUR WITNESSES. IF IN DISAGREEMENT WITH PREVIOUSLY ESTABLISHED CORNER, SHOW THE DISTANCE BETWEEN THE TWO CORNERS AND ALSO INDICATED THE TIE TO THE DISPUTED CORNER.



- ⊕ = BERNTSEN SURVEY NAIL FOUND
- ⊙ = STADARD WISDOT 30" DRIVE-ABLE MONUMENT WITH BRASS CAP SET

I DARREN B. KRZANOWSKI, REGISTERED LAND SURVEYOR NO. 2663, HEREBY CERTIFY THAT THE CORNER LOCATION ON THIS RECORD WAS REFERENCED BY ME OR UNDER MY DIRECTION AND CONTROL AND THAT THIS U.S. PUBLIC LAND SURVEY MONUMENT RECORD IS COMPLETE TO THE BEST OF MY KNOWLEDGE AND BELIEF.

Darren B. Krzanowski
 DARREN B. KRZANOWSKI RLS 2663
 DATED THIS 1ST DAY OF NOVEMBER 2013

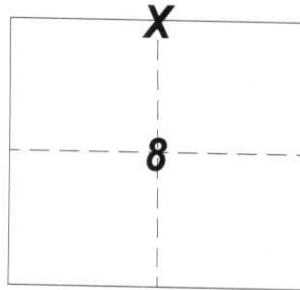


INDEX NO. T31N R7E E-7

LINCOLN COUNTY
GOVERNMENT LAND CORNER CERTIFICATE

TYPE OF MONUMENT: BERNTSEN SURVEY MARKER NAIL

L.C.C.S COORDINATES
N: 126866.82
E: 404668.95



CORNER NO. _____

SECTION 8
TOWN 31 NORTH
RANGE 7 EAST

DRAWN BY: KELLY D. CALLAWAY

BASIS FOR CORNER LOCATION

Reconstruction of STH "17" destroyed the existing corner and ties. I restored the North 1/4 corner of Section 8 by using Coordinates established prior to highway construction and set new ties. (See Sketch)

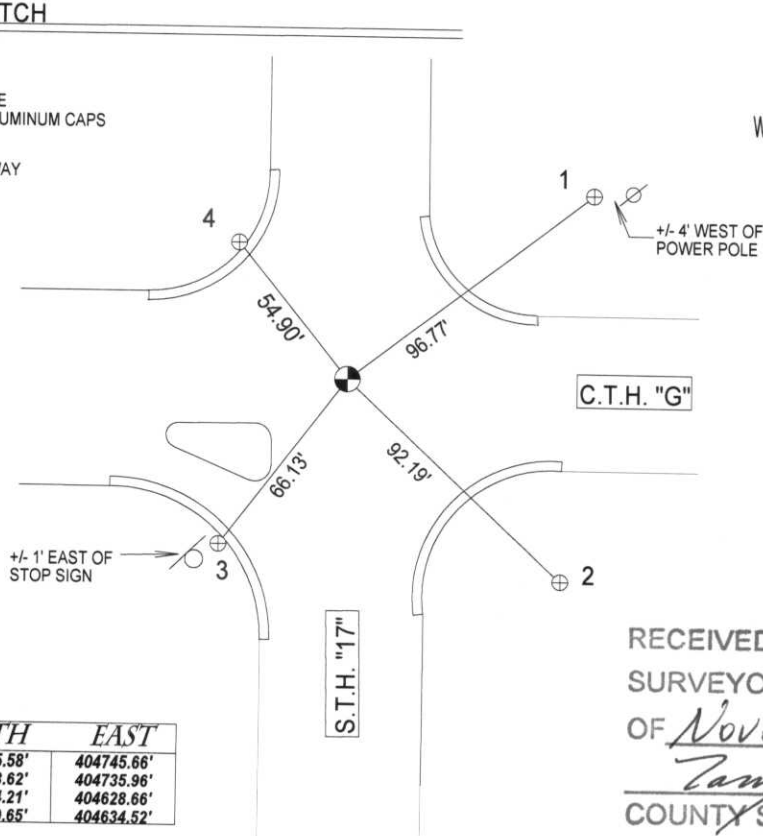


LOCATION & TIE SKETCH

ALL REFERENCE MONUMENTS ARE
REBAR WITH LINCOLN COUNTY ALUMINUM CAPS

CREW MEMBERS: KELLY CALLAWAY
MARK HINTZ

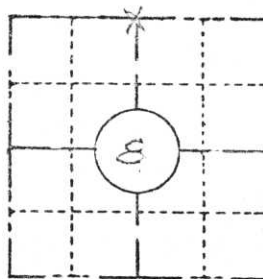
DATE: 10/23/06



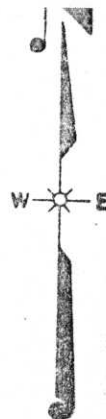
NUMBER	NORTH	EAST
1	126925.58'	404745.66'
2	126803.62'	404735.96'
3	126814.21'	404628.66'
4	126909.65'	404634.52'

RECEIVED BY LINCOLN COUNTY
SURVEYOR THIS 15TH DAY
OF November 20, 06
Tony Dath
COUNTY SURVEYOR

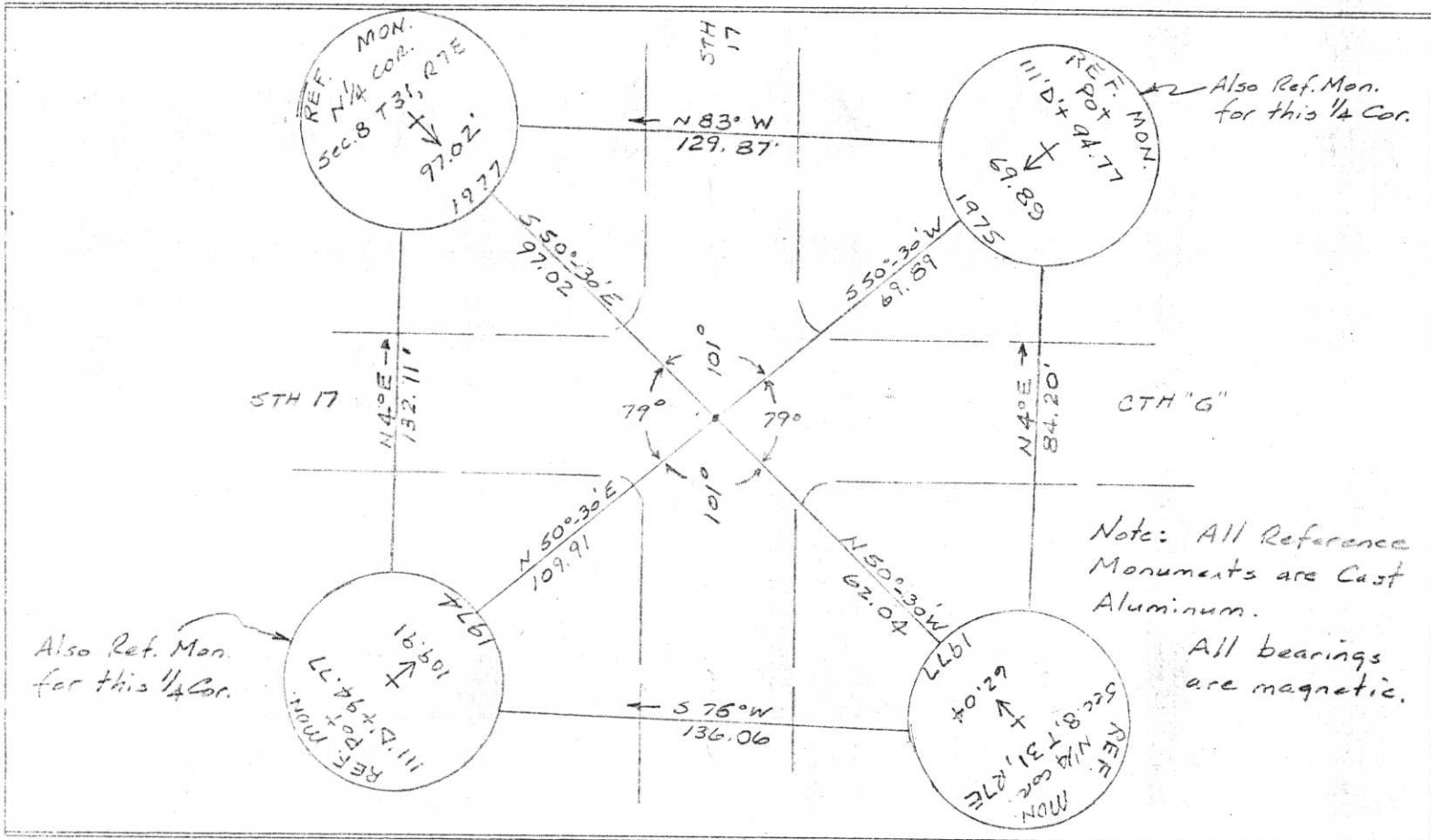
COUNTY <i>Lincola</i>		
TOWN <i>Pine River</i>		
HIGHWAY <i>STH 17</i>		
SECTION <i>8</i>	TOWNSHIP <i>31 N</i>	RANGE <i>R 7 E</i>
TYPE OF LANDMARK <i>R.R. spike in Pavement</i>		



LOCATION SKETCH
(Location of landmark indicated by "x")



This space for copy of field notes or ties to the above described landmarks



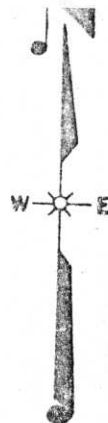
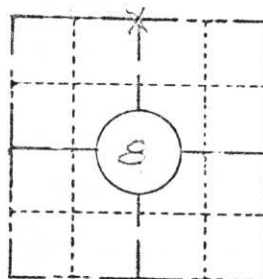
FILED UNDER PROJECT NUMBER <i>1173-2-00</i>		
SHC DISTRICT OFFICE NUMBER <i>7</i>		
CITY <i>Rhineland</i>	COUNTY <i>Oneida</i>	
LOCATED AND ESTABLISHED BY <i>and referenced by:</i>		
NAME <i>Jack R. Wallis</i>		
TITLE <i>Survey Crew Chief</i> DATE <i>4-11-77</i>		

COUNTY CLERK'S OFFICE	
COUNTY OF	WISCONSIN } 55
DATE RECEIVED FOR RECORD	DATE COPY SENT TO COUNTY SURVEYOR
SIGNATURE OF COUNTY CLERK	

Note: This work done under the supervision of William H. Scherer, Survey Supervisor, R.L.S. 5-866
 William H. Scherer

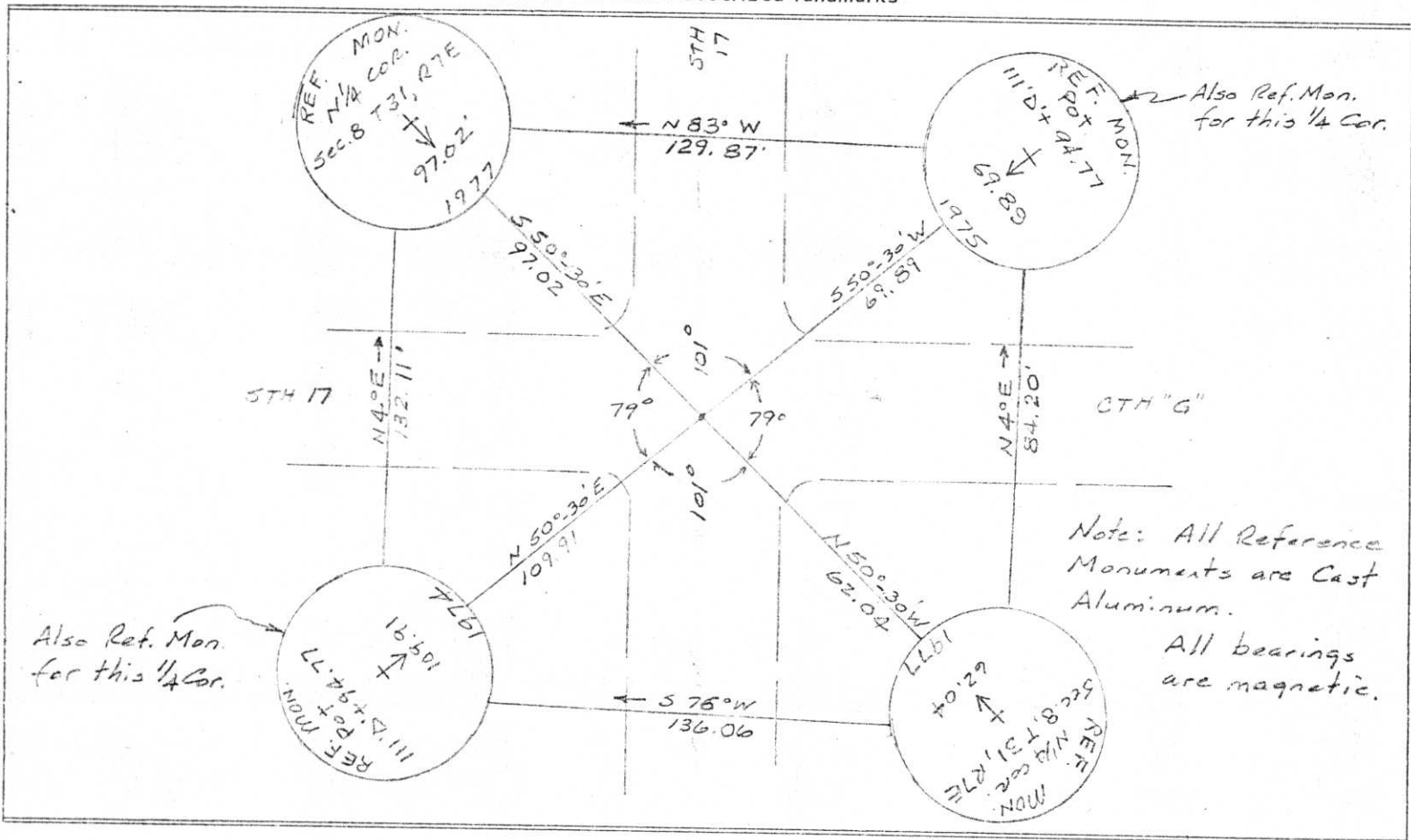
E-7

COUNTY <i>Lincoln</i>		
TOWN <i>Pine River</i>		
HIGHWAY <i>STH 17</i>		
SECTION <i>8</i>	TOWNSHIP <i>31 N</i>	RANGE <i>R 7E</i>
TYPE OF LANDMARK <i>R.R. Spike in Pavement</i>		



LOCATION SKETCH
(Location of landmark indicated by "x")

This space for copy of field notes or ties to the above described landmarks



FILED UNDER PROJECT NUMBER <i>1173-2-00</i>		
USH 51 Freeway (Merrill By Pass)		
SHC DISTRICT OFFICE NUMBER <i>7</i>	CITY <i>Rhineland</i>	COUNTY <i>Oneida</i>
LOCATED OR ESTABLISHED BY and referenced by: NAME <i>Jack P. Williams</i> TITLE <i>Survey Crew Chief</i> DATE <i>4-11-77</i>		

COUNTY CLERK'S OFFICE	
COUNTY OF	WISCONSIN } SS
DATE RECEIVED FOR RECORD	DATE COPY SENT TO COUNTY SURVEYOR
SIGNATURE OF COUNTY CLERK	

Note: This work done under the supervision of William H. Scherer, Survey Supervisor, R.L.S. S-566
 William H. Scherer

E-7

SURVEY MONUMENT LOCATION RECORD

LANDMARK BENCHMARK

FOUND
 SET
 RE-SET
 RE-TIED

SECTION 8
 TOWNSHIP 31 N
 RANGE 7 E
 [CITY, VILLAGE, COUNTY] LINCOLN

CORNER IDENTITY PK NAIL FOUND
 DATE OF SURVEY OCT 6 1976
 WEATHER CLOUDY + BREEZY
 TEMPERATURE ±50°
 SURVEY PARTY D. TLUSTY M. HENRICH S

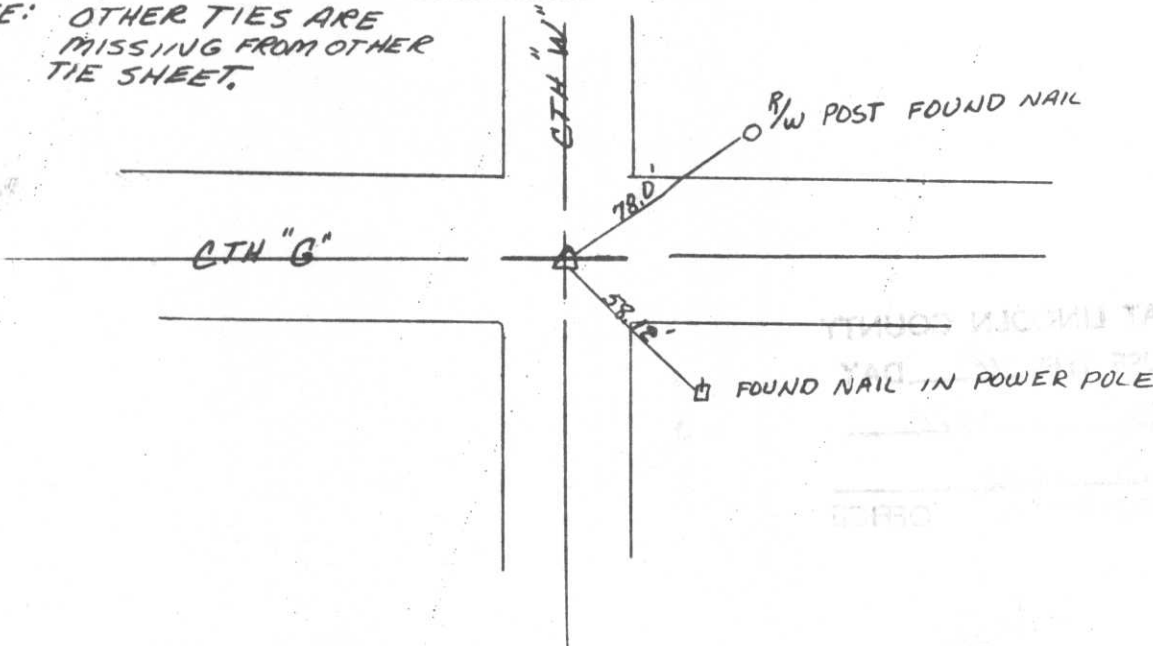


BASIS FOR MONUMENT LOCATION

DESCRIBE METHOD OF SURVEY AND CORNER AUTHENTICATION

TIE SKETCH SHOW HORIZONTAL TIE DISTANCES TO FIXED WITNESS MONUMENTS. DESCRIBE ALL MONUMENTS FOUND OR SET.

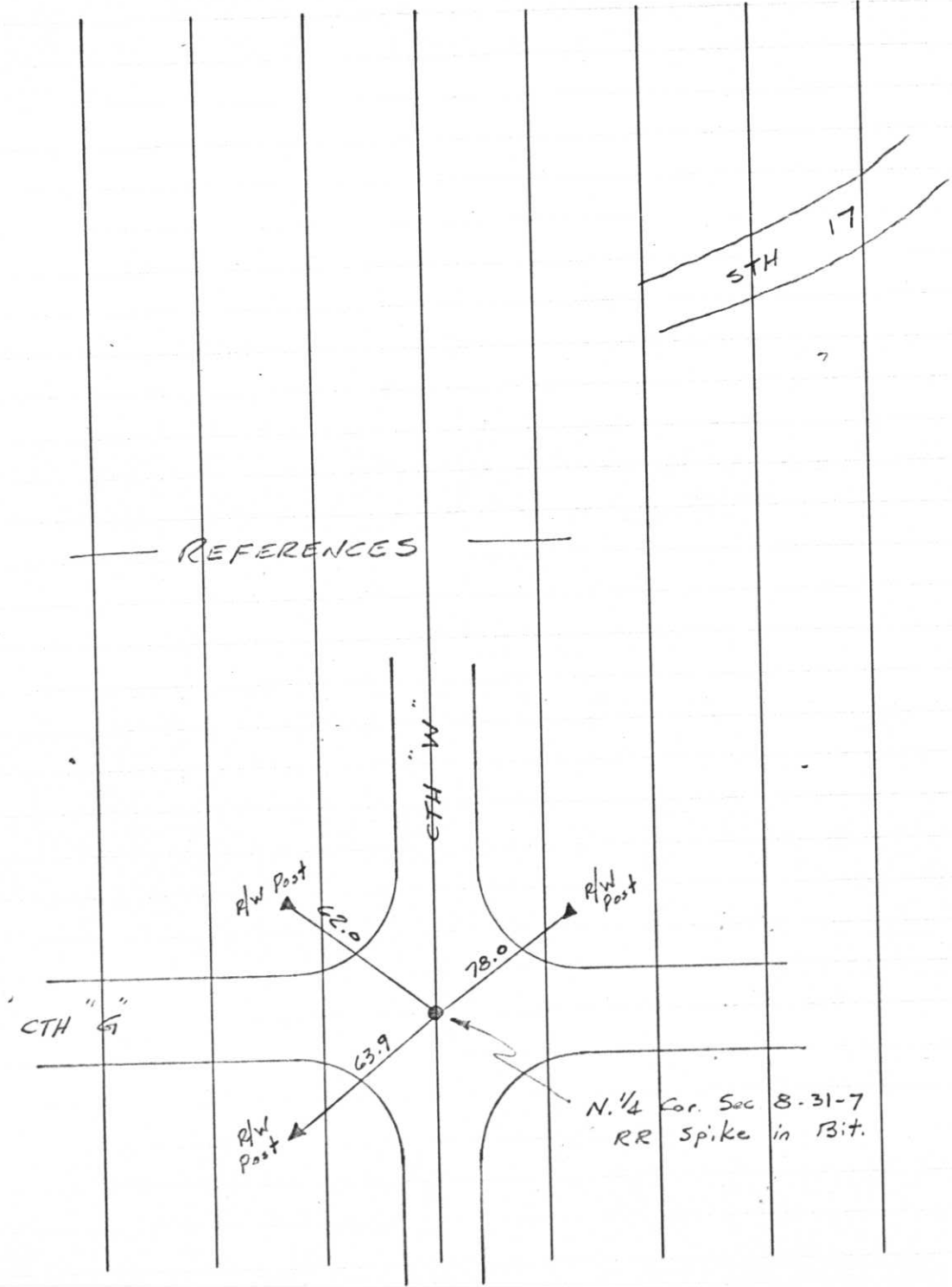
NOTE: OTHER TIES ARE MISSING FROM OTHER TIE SHEET.



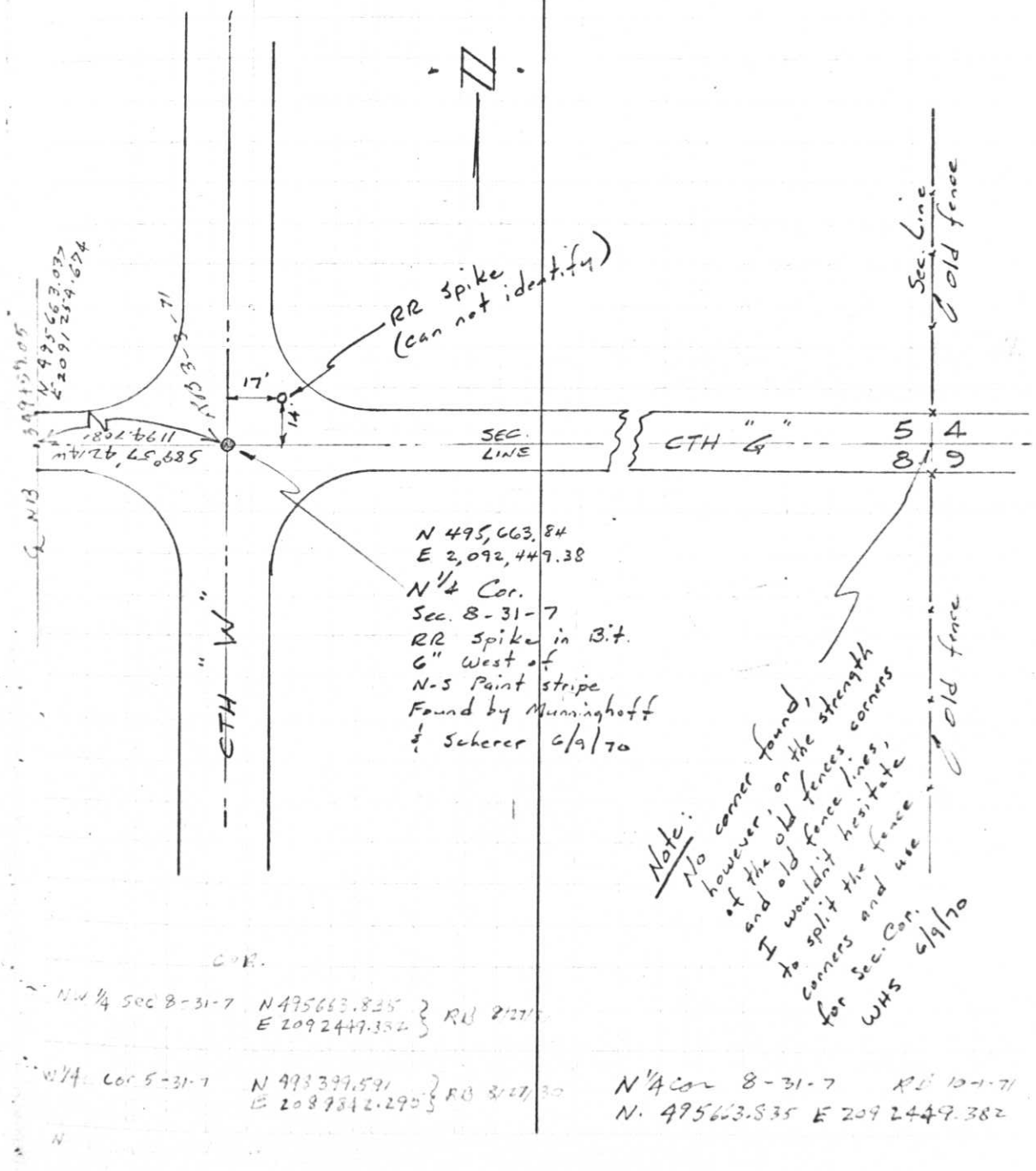
RECEIVED AT LINCOLN COUNTY COURT HOUSE OF _____ TAX _____

T 31 N, R 7 E

June 9, 1970



REFERENCES



N 495,663.84
 E 2,092,449.38
 N 1/4 Cor.
 Sec. 8-31-7
 RR spike in B.t.
 6" West of
 N-S Paint stripe
 Found by Munninghoff
 & Scherer 6/9/70

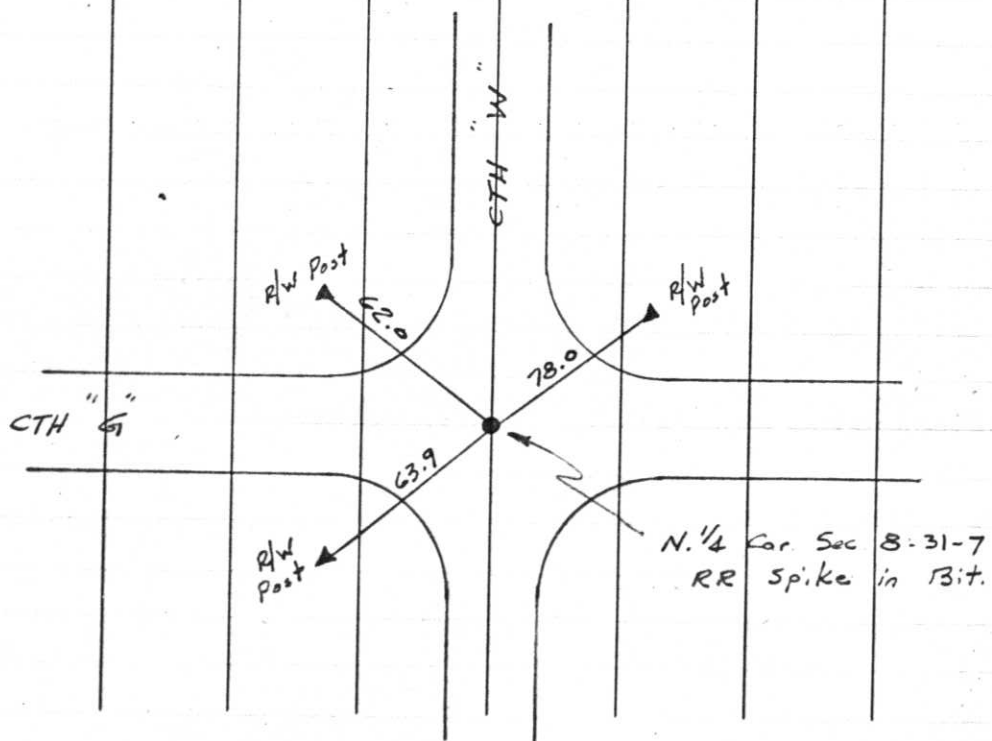
Note:
 No corner found,
 however, on the strength
 of the old fences lines,
 and old fence corners,
 I would hesitate
 to split the fence
 for Sec. Cor.
 WHS 6/9/70

N. 1/4 Sec 8-31-7 }
 N 495663.825 } RD 2127
 E 2092449.354 }
 N. 1/4 Cor 8-31-7 }
 N 493399.591 } RD 2127, 30
 E 2087812.295 }

N. 1/4 Cor 8-31-7 RD 10-1-71
 N. 495663.835 E 2092449.382

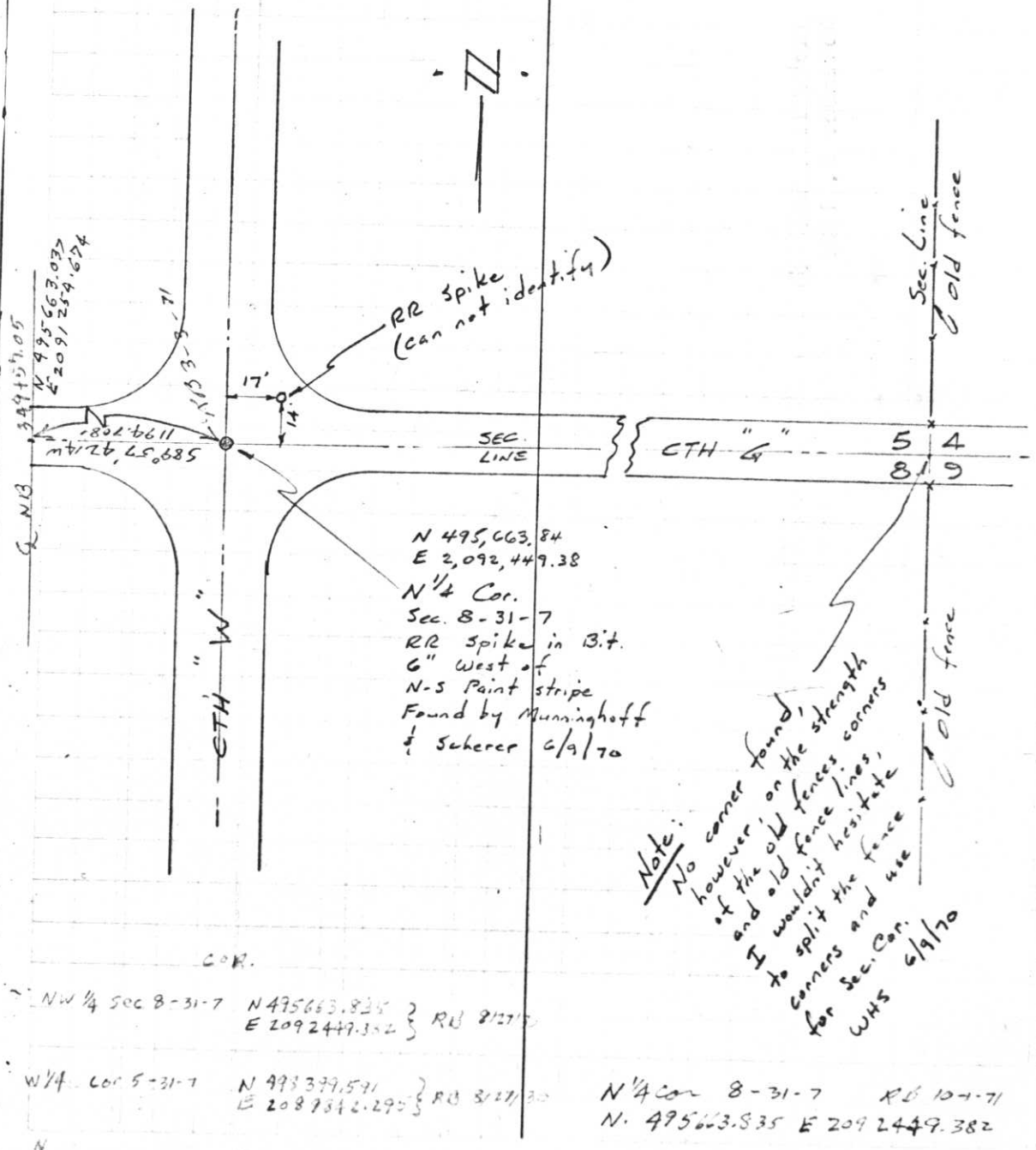
Project I.D. 1173-2-00 So. Co. Line
 -1.4Mi. N. Merrill U.S.H. 51
 Freeway Lincoln County Wm. Scherer
 Surveyor Received from Division of
 Hwy's Jan. 11. 1973

REFERENCES



T31 N, R7 E

June 9, 1970





18 11:15 AM



18 11:17 AM



18 11:18 AM



18 11:15 AM