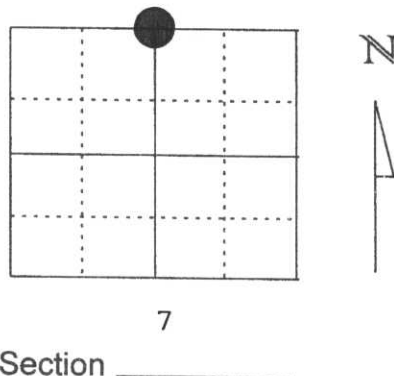


# U.S. PUBLIC LAND SURVEY MONUMENT RECORD

Note: This form is intended and designed to fulfill all requirements of Wisconsin Administrative Code, Chapter A-E 5.02, U.S. Public Land Survey Monument Record (3) (a) (b) (c) (d) (e) (f) (g) (h) (i). An additional sheet may be added if necessary to conform with said requirements.

(a) Corner location: Township 31 North  
 Range 7 East  
 Town/City/Village CITY OF MERRILL  
 County Lincoln



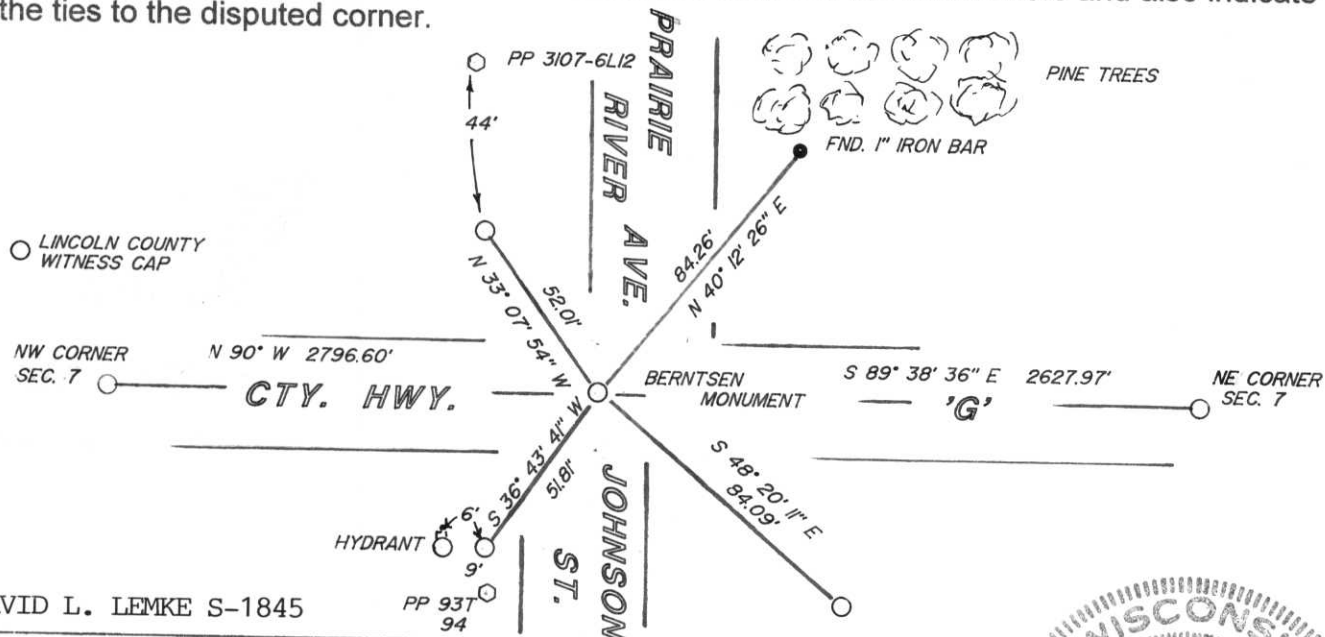
(b) (f) (g) (h) Description of monument found at this corner and if it was accepted, state all evidence (material, testimonial, occupational, plats, records, other monuments) used as a basis for accepting. If not accepted or if nothing was found, state evidence used as basis for establishing location. If reestablished through lost corner proportionate methods, indicate all monuments, distances and directions used to establish.

JANUARY OF 1997 DAVID OSTERBRINK RECOVERED BERNTSEN SET BY SHERIDAN SCHWARK IN 1976. 4 WITNESS TIES WERE SET BY OSTERBRINK TO THE FOUND MONUMENT.

I FOUND ONE OF OSTERBRINK'S TIES AND THE MONUMENT SET BY SCHWARK AND RESET 3 NEW WITNESS TIES TO THE CORNER POSITION AS SHOWN.

RECEIVED AT LINCOLN COUNTY  
 COURTHOUSE THIS 10th DAY  
 OF June 19 99  
*Pat Friebel*  
 LAND INFORMATION OFFICE

(c) (d) (e) Plan view of corner with ties to at least 4 witness monuments. If in disagreement with previously established corner, show the distances between the two corners and also indicate the ties to the disputed corner.

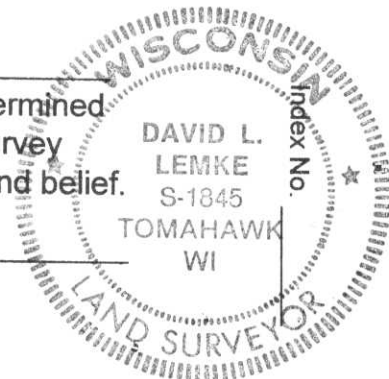


(i) I, DAVID L. LEMKE S-1845

(type or print name) certify that the corner location on this record was determined by me or under my direction and control and that this U.S. Public Land Survey Monument Record is correct and complete to the best of my knowledge and belief.

Signature

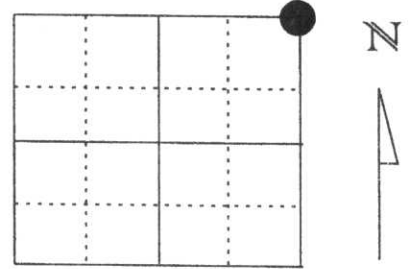
Date



# U.S. PUBLIC LAND SURVEY MONUMENT RECORD

Note: This form is intended and designed to fulfill all requirements of Wisconsin Administrative Code, Chapter A-E 5.02, U.S. Public Land Survey Monument Record (3) (a) (b) (c) (d) (e) (f) (g) (h) (l). An additional sheet may be added if necessary to conform with said requirements.

(a) Corner location: Township 31 North  
 Range 7 East  
 Town/City/Village TN. MERRILL  
 County Lincoln



Section 7

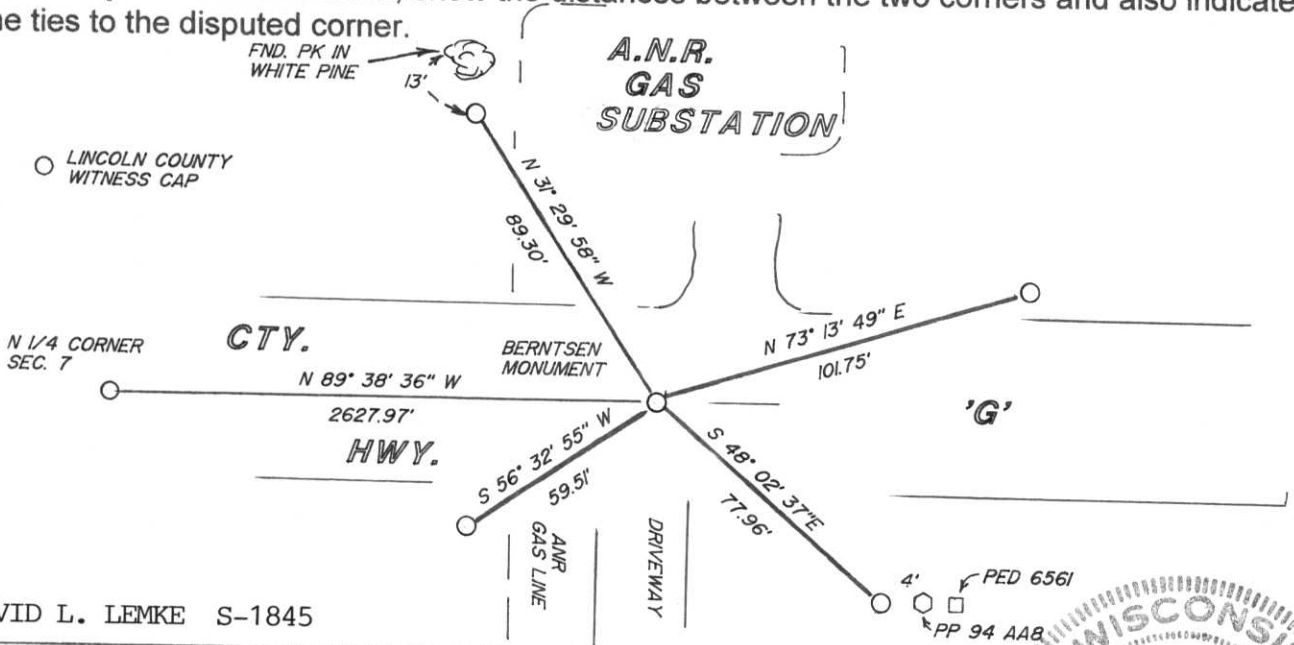
(b) (f) (g) (h) Description of monument found at this corner and if it was accepted, state all evidence (material, testimonial, occupational, plats, records, other monuments) used as a basis for accepting. If not accepted or if nothing was found, state evidence used as basis for establishing location. If reestablished through lost corner proportionate methods, indicate all monuments, distances and directions used to establish.

JUNE 1976 SHERIDAN SCHWARK SET A BERNTSEN MONUMENT AND ESTABLISHED 3 TIES TO THE CORNER POSITION.

I FOUND ONE OF SHERIDAN'S TIES AND THE REMAINS OF THE MONUMENT - TOP KNOCKED OFF - IN THE PAVEMENT OF HWY. 'G'. I RESET 4 WITNESS TIES TO THE CORNER POSITION AS SHOWN.

**RECEIVED AT LINCOLN COUNTY  
 COURTHOUSE THIS 10th DAY  
 OF June 19 99  
*Pat Pribe*  
 LAND INFORMATION OFFICE**

(c) (d) (e) Plan view of corner with ties to at least 4 witness monuments. If in disagreement with previously established corner, show the distances between the two corners and also indicate the ties to the disputed corner.

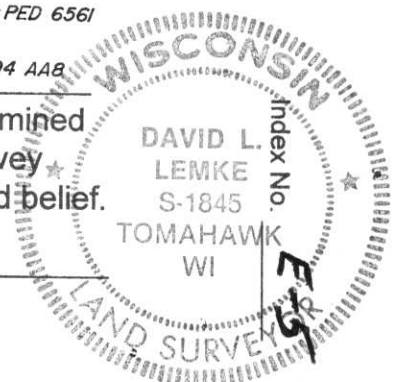


(l) I, DAVID L. LEMKE S-1845

(type or print name) certify that the corner location on this record was determined by me or under my direction and control and that this U.S. Public Land Survey Monument Record is correct and complete to the best of my knowledge and belief.

*David Lemke* 6.9.99  
 Signature

Date



# U.S. PUBLIC LAND SURVEY MONUMENT RECORD

NOTE: THIS FORM IS INTENDED AND DESIGNED TO FULFILL ALL REQUIREMENTS OF WISCONSIN ADMINISTRATIVE CODE, CHAPTER A-E 7.08 U.S. PUBLIC LAND SURVEY MONUMENT RECORD (3) (a) (b) (c) (d) (e) (f) (g) (h) (i). AN ADDITIONAL SHEET MAY BE ADDED IF NECESSARY TO CONFORM WITH SAID REQUIREMENTS.

(a) CORNER LOCATION: TOWNSHIP 31 NORTH  
 RANGE 7 EAST  
 TOWN ~~\_\_\_\_\_~~ MERRILL  
 COUNTY LINCOLN



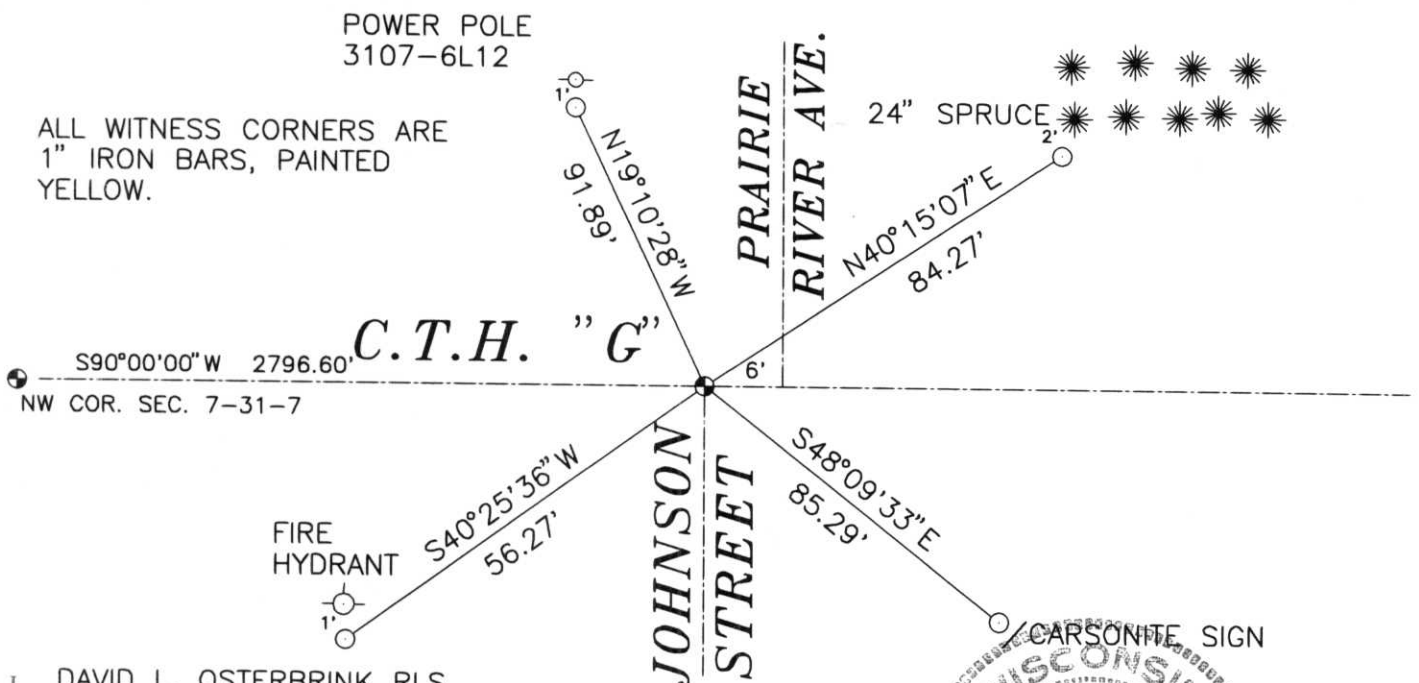
SECTION 7

(b) (f) (g) (h) DESCRIPTION OF MONUMENT FOUND AT THIS CORNER AND IF IT WAS ACCEPTED, STATE ALL EVIDENCE (MATERIAL, TESTIMONIAL, OCCUPATIONAL, PLATS, RECORDS, OTHER MONUMENTS) USED AS BASIS FOR ACCEPTING. IF NOT ACCEPTED OR IF NOTHING WAS FOUND, STATE EVIDENCE USED AS BASIS FOR ESTABLISHING LOCATION. IF REESTABLISHED THROUGH LOST CORNER PROPORTIONATE METHODS, INDICATE ALL MONUMENTS, DISTANCES AND DIRECTIONS USED TO ESTABLISH. INDICATE TYPE OF MONUMENT FOUND OR SET AND SIGN POST.

BERNTSEN MONUMENT SET BY SCHWARK IN 1976. FOUND THAT THE CAP OF THE MONUMENT HAS DISINTEGRATED. DUG DOWN, FOUND SOLID REMAINS OF MONUMENT, SET UP OVER TOP, RESET TIES, SHOT DISTANCES WITH EDM. DID NOT SET ANY MONUMENT OVER THE TOP OF EXISTING BERNTSEN.

**RECEIVED AT LINCOLN COUNTY  
 COURTHOUSE THIS 30th DAY  
 OF Jan 19 97  
*Pat Priebe*  
**TAX DESCRIPTION OFFICE****

(c) (d) (e) PLAN VIEW OF CORNER WITH TIES TO AT LEAST 4 WITNESS MONUMENTS. IF IN DISAGREEMENT WITH PREVIOUSLY ESTABLISHED CORNER, SHOW THE DISTANCES BETWEEN THE TWO CORNERS AND ALSO INDICATE THE TIES TO THE DISPUTED CORNER.



ALL WITNESS CORNERS ARE 1" IRON BARS, PAINTED YELLOW.

(i) I, DAVID L. OSTERBRINK RLS.  
 (TYPE OR PRINT NAME) CERTIFY THAT THE CORNER LOCATION ON THIS RECORD WAS DETERMINED BY ME OR UNDER MY DIRECTION AND CONTROL AND THAT THIS U.S. PUBLIC LAND SURVEY MONUMENT RECORD IS CORRECT AND COMPLETE TO THE BEST OF MY KNOWLEDGE AND BELIEF.

*David L. Osterbrink*  
 SIGNATURE DATE 1-28-97



INDEX NO. E-3

CERTIFIED LAND CORNER RESTORATION

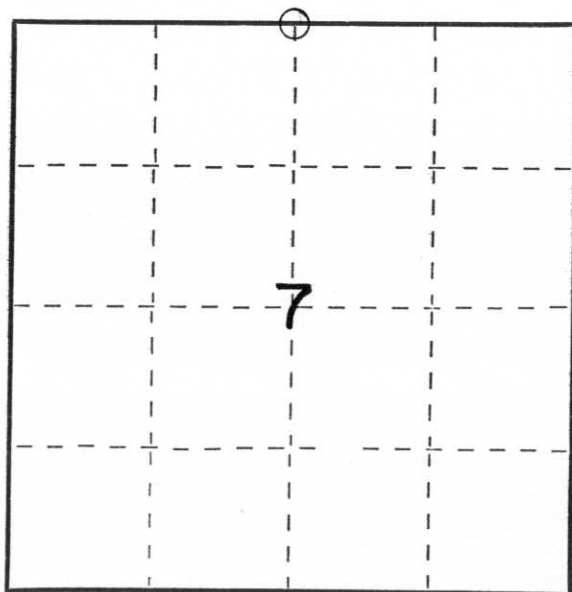
Index No. E-3

State of Wisconsin }  
County of Lincoln } ss.

I Sheridan D. Schwark, do hereby certify that on the \_\_\_\_\_ day of \_\_\_\_\_, 19 76, I found evidence of the North one-quarter corner of Section 7 Township 31, North, Range 7 East, Fourth, Principal Meridian, as described hereon; and that from this evidence I established a new monument and accessories as described hereon to perpetuate the original location of this corner.

Resident witnesses:

\_\_\_\_\_  
\_\_\_\_\_  
\_\_\_\_\_



○ = Corner monument restored.

History of original corner establishment:

Original Surveyor: A. G. Ellis and L. G. Ellis  
Date of Original Survey: March, 1852  
Original Corner: Wood Post  
Original Bearing Trees: Birch 7" S. 11° W. 18 Lks.  
Pine 18" N. 3° E. 19 Lks.

Description of corner evidence found:

There was no original evidence available. The highway was rebuilt in 1935 and there was no evidence of a monument mentioned on the highway plans. Therefore, I accepted a P.K. nail which had previously been used by Gordon Bush, R.L.S. and Edwin Abendroth, R.L.S. as the North one-quarter corner.

Description of monument and accessories I established to perpetuate the original location of this corner.

Set a Lincoln County Berntsen monument - 36" - witnessed by

a P.K. nail in Power Pole No. 94 S28°W 58.5 feet  
a P.K. nail in a 12" Spruce N19°W 79.9 feet  
a P.K. nail in a 14" Spruce N36°E 87.4 feet  
a 1" Iron Pipe S29°E 68.0 feet

Dated at Merrill, Wis., this 10 TH day of JUNE, 19 76

Signature Sheridan D. Schwark Title Registered Land Surveyor Registration No. S-1205  
(County Surveyor, Registered Land Surveyor, or other duly authorized official)

Office of Register of Deeds, County of \_\_\_\_\_, I hereby certify that the within instrument was filed in this office for record on the \_\_\_\_\_ day of \_\_\_\_\_, 19 \_\_\_\_\_ at \_\_\_\_\_ o'clock \_\_\_\_\_ M.

\_\_\_\_\_  
(Register of Deeds)

By \_\_\_\_\_ Deputy