

Attachment to Tie Sheet C-1 T31N, R8E

Visited this corner on May 18, 2012 and found all Reference Monuments in good condition. Set a Berntsen Spike per Tie Sheet. Set a white "T" Post near the West Reference Monument. Field Book #5 Page 133.

Anthony Dallman *6/08/12*

Anthony Dallman

Lincoln County Surveyor



U.S. PUBLIC LAND SURVEY MONUMENT RECORD

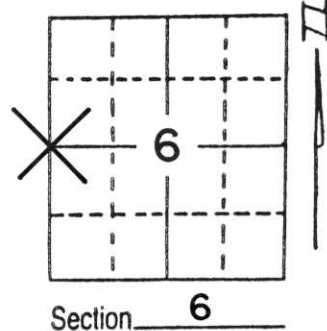
Note: This form is intended and designed to fulfill all requirements of Wisconsin Administrative Code, Chapter A-E 5.02, U.S. Public Land Survey Monument Record (3) (a) (b) (c) (d) (e) (f) (g) (h) (i). An additional sheet may be added if necessary to conform with said requirements.

(a) Corner location: Township 31 North

Range 8 East

Town/City/Village PINE RIVER

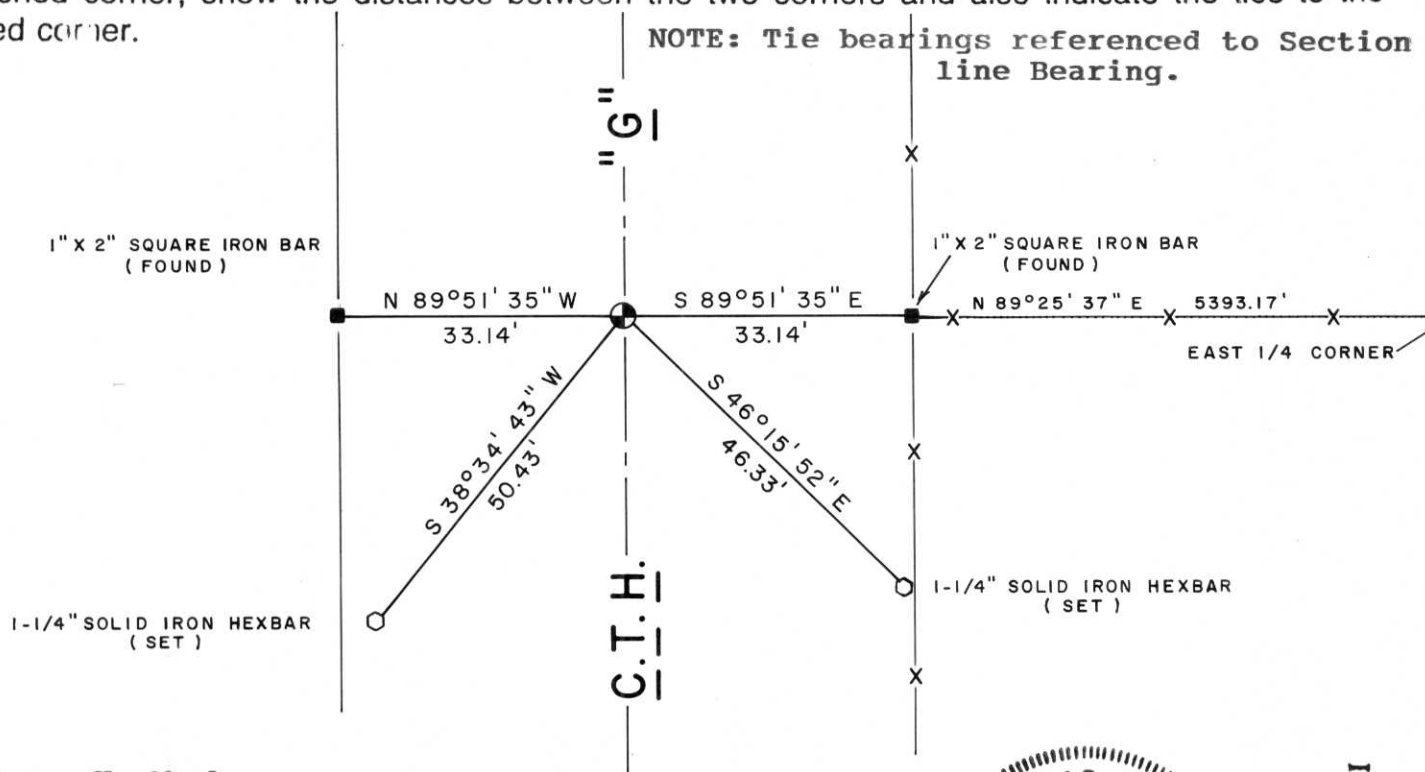
County LINCOLN



(b) (f) (g) (h) Description of monument found at this corner and if it was accepted, state all evidence (material, testimonial, occupational, plats, records, other monuments) used as a basis for accepting. If not accepted or if nothing was found, state evidence used as basis for establishing location. If reestablished through lost corner proportionate methods, indicate all monuments, distances and directions used to establish.

Recovered a 1" x 2" solid iron bar at West R/W of County Highway "G" and another at East R/W. I believe these are witness monuments to cornerstone set out by Francis Fox. Established corner point midway between said witness monuments and set a standard Lincoln County Berntsen Monument Aluminum cap with extension at corner.

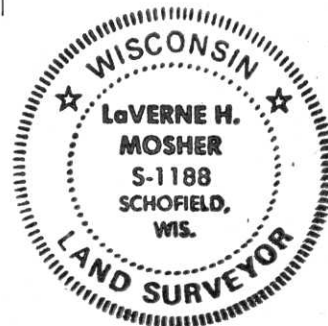
(c) (d) (e) Plan view of corner with ties to at least 4 witness monuments. If in disagreement with previously established corner, show the distances between the two corners and also indicate the ties to the disputed corner.



(i) I, LaVerne H. Mosher
 (type or print name) certify that the corner location on this record was determined by me or under my direction and control and that this U.S. Public Land Survey Monument Record is correct and complete to the best of my knowledge and belief.

LaVerne H. Mosher
 Signature

AUGUST 7, 1992
 Date



Index No. C-1









