

# U.S. PUBLIC LAND SURVEY MONUMENT RECORD

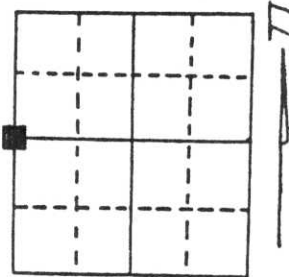
Note: This form is intended and designed to fulfill all requirements of Wisconsin Administrative Code, Chapter A-E 5.02, U.S. Public Land Survey Monument Record (3) (a) (b) (c) (d) (e) (f) (g) (h) (i). An additional sheet may be added if necessary to conform with said requirements.

(a) Corner location: Township 31 North

Range 7 East

Town/City/Village Tn. of Pine River

County Lincoln

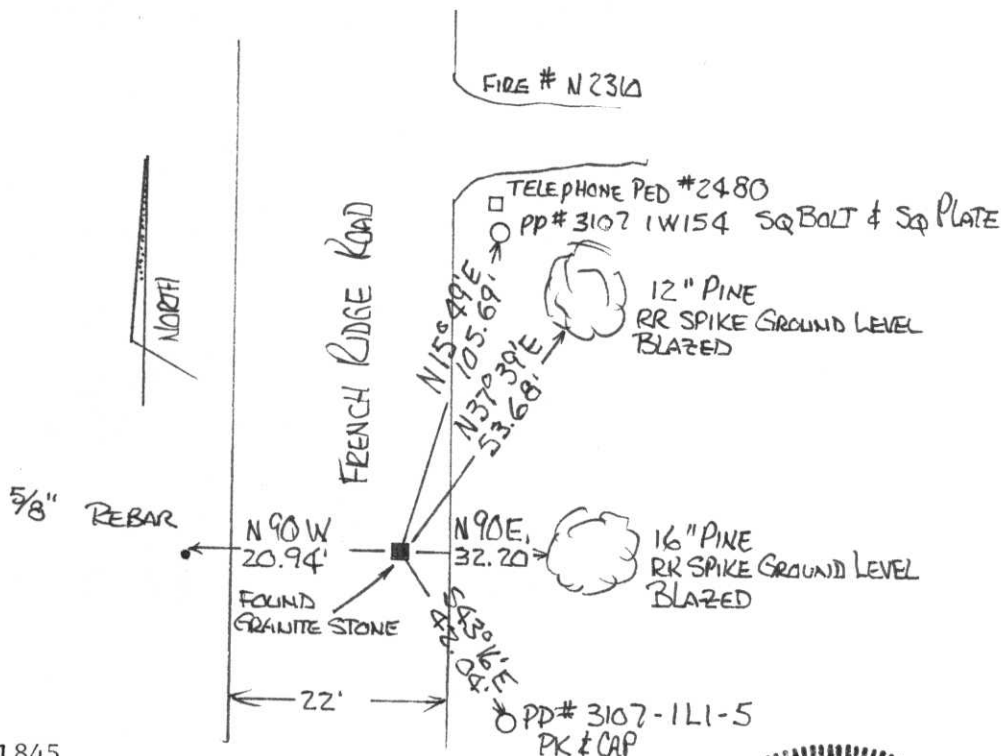


Section 1

(b) (f) (g) (h) Description of monument found at this corner and if it was accepted, state all evidence (material, testimonial, occupational, plats, records, other monuments) used as a basis for accepting. If not accepted or if nothing was found, state evidence used as basis for establishing location. If reestablished through lost corner proportionate methods, indicate all monuments, distances and directions used to establish.

FEB/MARCH 1852 F.G. ELLIS SET WOOD POST SUGAR MAPLE 10" N 88° E 22 LKS.  
LINN 18" N 61° W 18 LKS.  
 1900-1940 GRANITE STONES SET IN AREA BY W.P.A.  
 AUGUST 1993 TOWN CHAIRMAN LAWRENCE WALTERS REQUESTED THE MONUMENT  
 BE TIED OUT. STATING IT WAS PROTRUDING THROUGH THE PAVEMENT. I FOUND  
 THE MONUMENT IN THE LOCATION AND CONDITION HE DESCRIBED.

(c) (d) (e) Plan view of corner with ties to at least 4 witness monuments. If in disagreement with previously established corner, show the distances between the two corners and also indicate the ties to the disputed corner.



(i) I, DAVID L. LEMKE S-1845

(type or print name) certify that the corner location on this record was determined by me or under my direction and control and that this U.S. Public Land Survey Monument Record is correct and complete to the best of my knowledge and belief.

Signature

Date

*David L. Lemke*

8-9-93



Index No. C-21