

# LINCOLN COUNTY U.S. PUBLIC LAND SURVEY MONUMENT LOCATION RECORD

CORNER NUMBER 23174

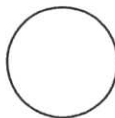
SECTION 2

TOWNSHIP 31 NORTH

RANGE 7 EAST

PINE RIVER

CITY, VILLAGE, TOWN



LANDMARK  BENCHMARK  
CORNER IDENTITY: WEST 1/4 CORNER

FOUND   
SET   
RESET   
RE-TIED

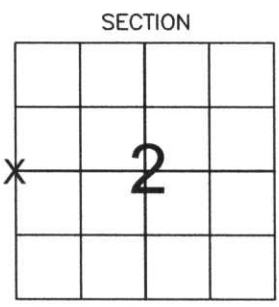
LINCOLN COUNTY COORDINATE: N: 129611.63  
E: 417992.33

ELEVATION-(FEET): \_\_\_\_\_ DATUM: \_\_\_\_\_

WEATHER: PARTLY CLOUDY

DATE OF SURVEY: 11-23-05 TEMPERATURE: 20 °F

SURVEY PARTY: NATHAN WINCENTSEN, KEITH WALKOWSKI



LOCATION (Indicated By X)

NO.

N

## BASIS FOR MONUMENT LOCATION:

(DESCRIBE METHOD OF SURVEY AND CORNER AUTHENTICATION)

DUG FOR WEST 1/4 CORNER WITH COUNTY GRADALL AT CENTERLINE AND FENCE LINE INTERSECTION, FOUND NO EVIDENCE OF CORNER. ACCEPTED CENTERLINE FENCE LINE INTERSECTION AS BEST AVAILABLE EVIDENCE FOR CORNER LOCATION AND PERPETUATED AS SHOWN BELOW.



FIELD BOOK NO. PINE RIVER PAGE NO. 31

COMPANY RIVERSIDE LAND SURVEYING LLC

CERTIFIED CORRECT:

Keith J. Walkowski  
KEITH J. WALKOWSKI  
Registered Land Surveyor  
DATE: Jan. 3RD, 2006

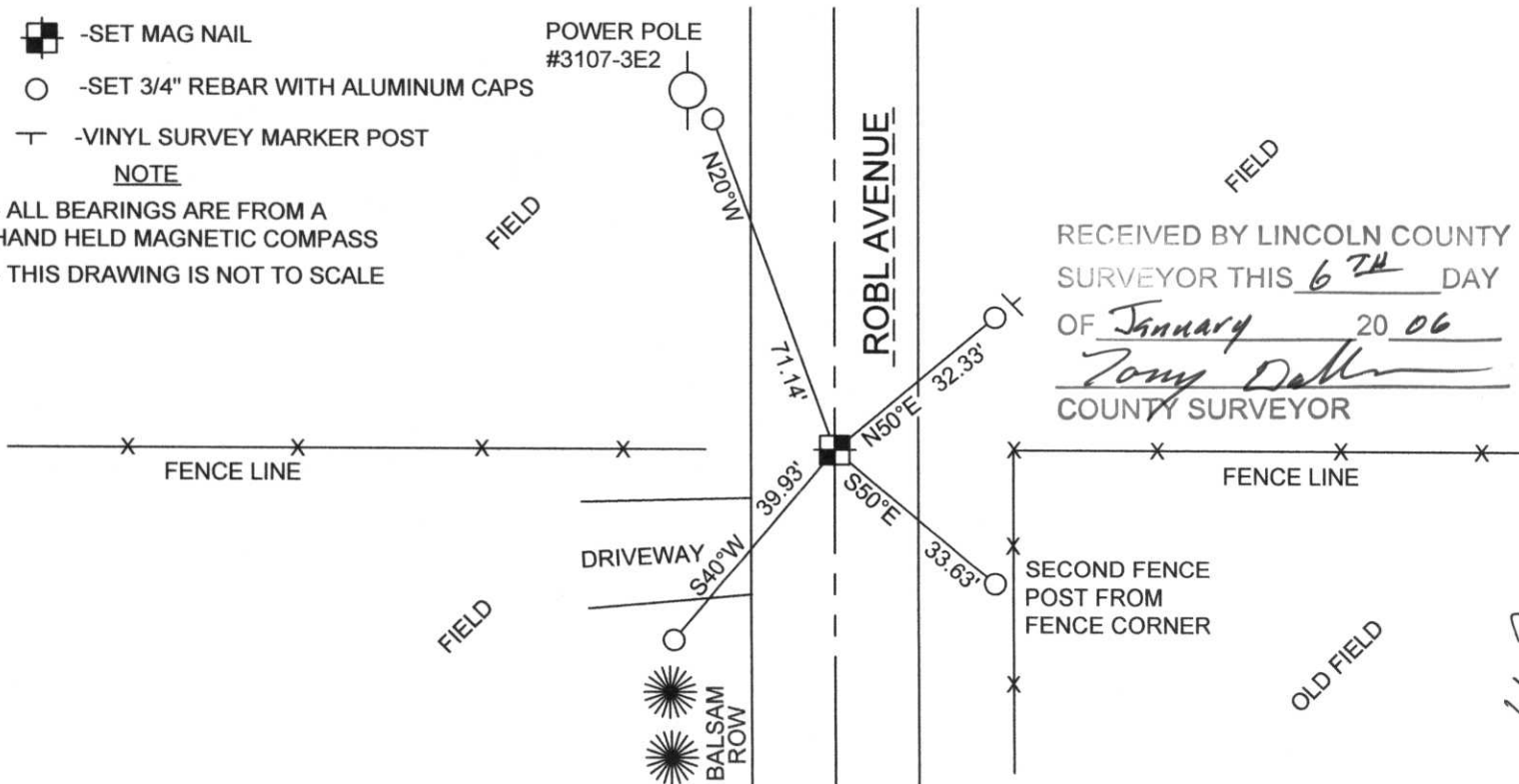
## TIE SKETCH:

SHOW MINIMUM OF FOUR (4) HORIZONTAL TIE DISTANCES TO FIXED WITNESS MONUMENTS. DESCRIBE ALL MONUMENTS FOUND OR SET. CORRECT ALL DISTANCES SHOWN TO STANDARD TEMPERATURE OF 68° F.

- SET MAG NAIL
- SET 3/4" REBAR WITH ALUMINUM CAPS
- VINYL SURVEY MARKER POST

### NOTE

- ALL BEARINGS ARE FROM A HAND HELD MAGNETIC COMPASS
- THIS DRAWING IS NOT TO SCALE



RECEIVED BY LINCOLN COUNTY SURVEYOR THIS 6<sup>TH</sup> DAY OF January 20 06  
Tony Della  
COUNTY SURVEYOR