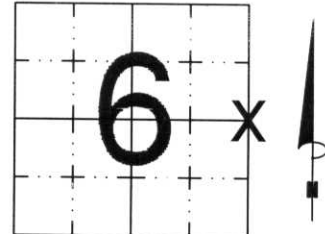


U.S. PUBLIC LAND SURVEY MONUMENT RECORD

NOTE: THIS FORM IS INTENDED AND DESIGNED TO FULFILL ALL REQUIREMENTS OF WISCONSIN ADMINISTRATIVE CODE, CHAPTER LAND SURVEY MONUMENT RECORD (3) (a) (b) (c) (d) (e) (f) (g) (h) (i). AN ADDITIONAL SHEET MAY BE ADDED IF NECESSARY TO CONFORM WITH SAID REQUIREMENTS. A-E 7.08 U.S. PUBLIC

(a) CORNER LOCATION: TOWNSHIP 31 NORTH
 RANGE 7 EAST/~~WEST~~
 TOWN/~~CITY/VILLAGE~~ MERRILL
 COUNTY LINCOLN



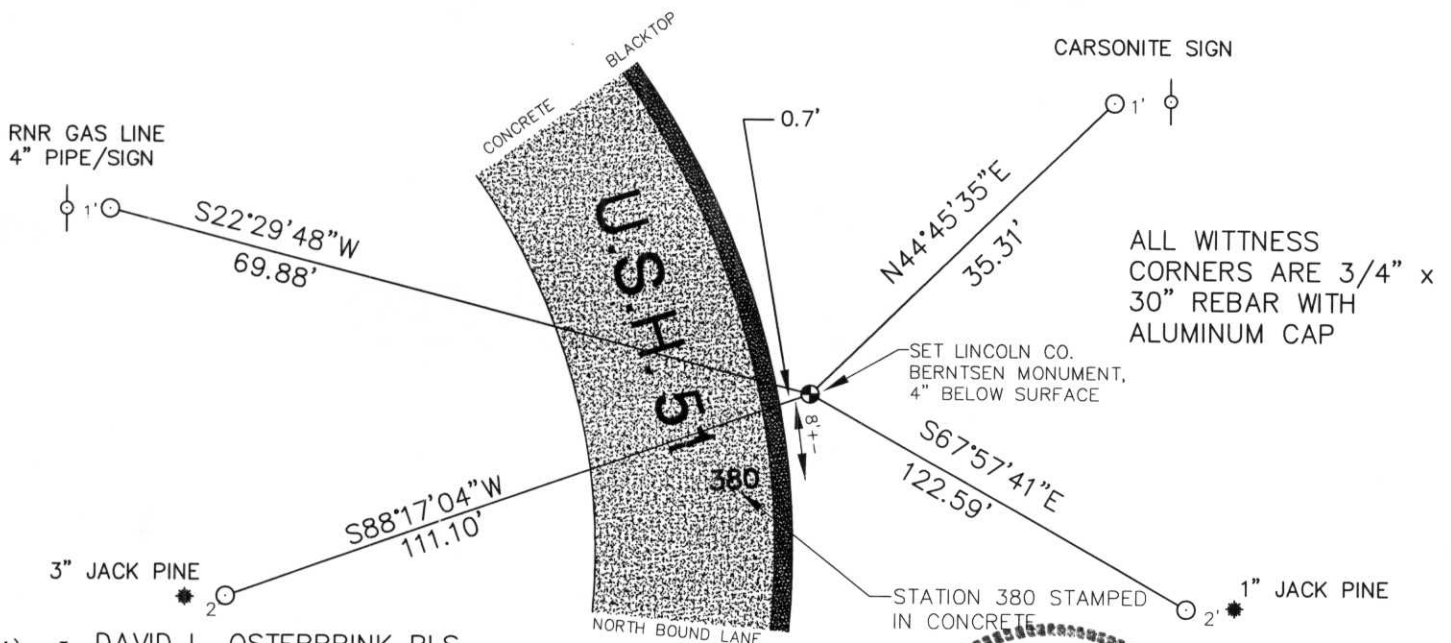
SECTION 6

(b) (f) (g) (h) DESCRIPTION OF MONUMENT FOUND AT THIS CORNER AND IF IT WAS ACCEPTED, STATE ALL EVIDENCE (MATERIAL, TESTIMONIAL, OCCUPATIONAL, PLATS, RECORDS, OTHER MONUMENTS) USED AS BASIS FOR ACCEPTING. IF NOT ACCEPTED OR IF NOTHING WAS FOUND, STATE EVIDENCE USED AS BASIS FOR ESTABLISHING LOCATION. IF REESTABLISHED THROUGH LOST CORNER PROPORTIONATE METHODS, INDICATE ALL MONUMENTS, DISTANCES AND DIRECTIONS USED TO ESTABLISH. INDICATE TYPE OF MONUMENT FOUND OR SET AND SIGN POST.

HIGHWAY 51 CONSTRUCTION PLANS SAY THERE WAS NO EVIDENCE OF CORNER BEFORE CONSTRUCTION. HELD FENCE LINE FROM WEST (EAST / WEST FENCE), AND NORTH / SOUTH FENCE LINE, NORTH & SOUTH OF HIGHWAY. SEARCHED AREA, FOUND NO EVIDENCE OF CORNER. ABENDROTHS PAPER CORNER FELL APPROXIMATLY 5 FEET NORTH. FOUND NO EVIDENCE TO SUPPORT HIS CORNER. SET CORNER AT FENCE LINES EXTENDED, INTERSECTION. TIED OUT. SET CORNER 4" BELOW SURFACE.

RECEIVED AT LINCOLN COUNTY
 COURTHOUSE THIS 3rd DAY
 OF Oct. 2000
Tony Hallman
 LAND INFORMATION OFFICE

(c) (d) (e) PLAN VIEW OF CORNER WITH TIES TO AT LEAST 4 WITNESS MONUMENTS. IF IN DISAGREEMENT WITH PREVIOUSLY ESTABLISHED CORNER, SHOW THE DISTANCES BETWEEN THE TWO CORNERS AND ALSO INDICATE THE TIES TO THE DISPUTED CORNER.



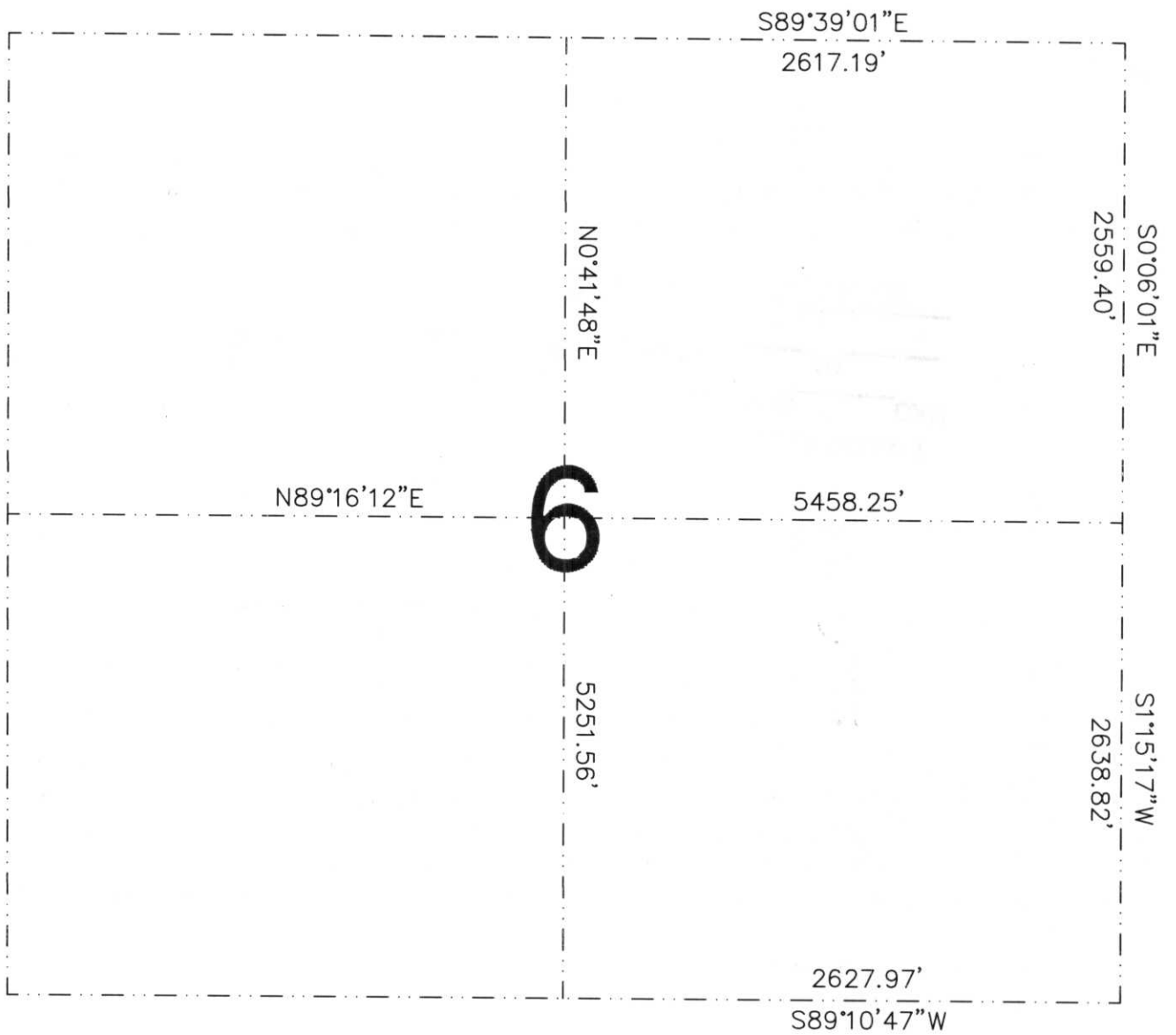
(i) I, DAVID L. OSTERBRINK RLS
 (TYPE OR PRINT NAME) CERTIFY THAT THE CORNER LOCATION ON THIS RECORD WAS DETERMINED BY ME OR UNDER MY DIRECTION AND CONTROL AND THAT THIS U.S. PUBLIC LAND SURVEY MONUMENT RECORD IS CORRECT AND COMPLETE TO THE BEST OF MY KNOWLEDGE AND BELIEF

David L. Osterbrink
 SIGNATURE 9-4-00
 DATE



INDEX NO. 2-5

SECTION 6-T31N-R7E





19 10:57 AM



19 10:57 AM



19 10:56 AM



19 10:56 AM

19 10:58 AM

