

U.S. PUBLIC LAND SURVEY MONUMENT RECORD

NOTE: THIS FORM IS INTENDED AND DESIGNED TO FULFILL ALL REQUIREMENTS OF WISCONSIN ADMINISTRATIVE CODE, CHAPTER A-E 7.08, U.S. PUBLIC LAND SURVEY MONUMENT RECORD (3)(a)(b)(c)(d)(e)(f)(g)(h)(i). ADDITIONAL SHEETS MAY BE NECESSARY TO CONFORM TO SAID REQUIREMENTS.

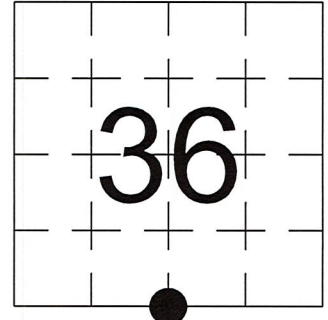
T 31 N, R 6 E

(a) CORNER LOCATION:

SOUTH 1/4 CORNER, SECTION 36
 TOWNSHIP 31 NORTH
 RANGE 6 EAST
 TOWN OF SCOTT
 LINCOLN COUNTY
 WISCONSIN

(b) HISTORY OF ORIGINAL CORNER:

ORIGINAL SURVEYOR: See Previous Tie Sheet
 COMMENCING DATE:
 COMPLETION DATE:
 ORIGINAL BEARING TREES:



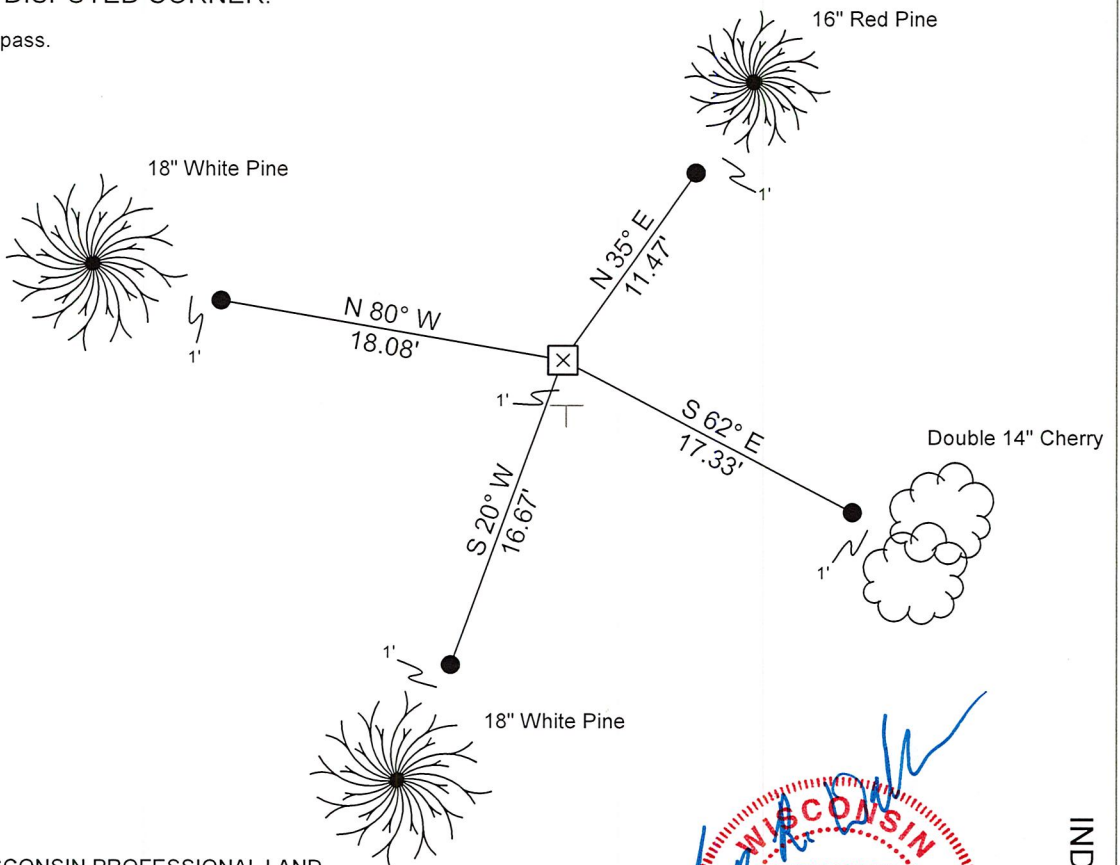
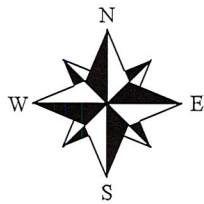
(f)(g)(h) DESCRIPTION OF MONUMENT FOUND AT THIS CORNER AND IF IT WAS ACCEPTED. STATE ALL EVIDENCE (MATERIAL, TESTIMONIAL, OCCUPATIONAL, PLATS, RECORDS, OTHER MONUMENTS) USED AS A BASIS FOR ESTABLISHING LOCATION. IF RE-ESTABLISHING THROUGH LOST CORNER PROPORTIONATE METHODS, INDICATE ALL MONUMENTS, DISTANCES, AND DIRECTIONS USED TO ESTABLISH. INDICATE TYPE OF MONUMENTS FOUND OR SET.

1/11/1973, Wm. Scherer, found a 6" X 6" Granite Monument.

11/15/2023, I, Anthony R. Dallman, PLS-2405, found a 6" X 6" Granite Monument, up 12". I accepted this location and set witness monuments, as shown in the sketch below, to further perpetuate the corner location.

(c)(d)(e) PLAN VIEW OF THE CORNER WITH TIES TO AT LEAST FOUR WITNESSES. IF IN DISAGREEMENT WITH PREVIOUSLY ESTABLISHED CORNER, SHOW THE DISTANCES BETWEEN THE TWO CORNERS AND ALSO THE TIES TO THE DISPUTED CORNER.

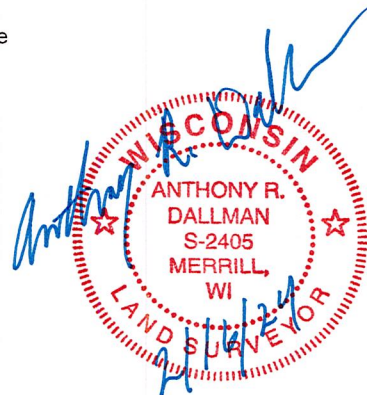
- Tie bearings by hand-held compass.
- Tie distances by steel tape.
- Not to scale.



- - Set 3/4" Capped Rebar
- ⊥ - Set Vinyl Post

I, ANTHONY R. DALLMAN, WISCONSIN PROFESSIONAL LAND SURVEYOR, S-2405, HEREBY CERTIFY THAT THE CORNER LOCATION ON THIS RECORD WAS REFERENCED BY ME OR UNDER MY DIRECTION AND CONTROL AND THAT THIS U.S. PUBLIC LAND SURVEY MONUMENT RECORD IS COMPLETE TO THE BEST OF MY KNOWLEDGE AND BELIEF.

Anthony R. Dallman 02/16/24
 ANTHONY R. DALLMAN, PLS S-2405



INDEX NO. Y-23

43106360020_Mon-N



43106360020_North



43106360020_West

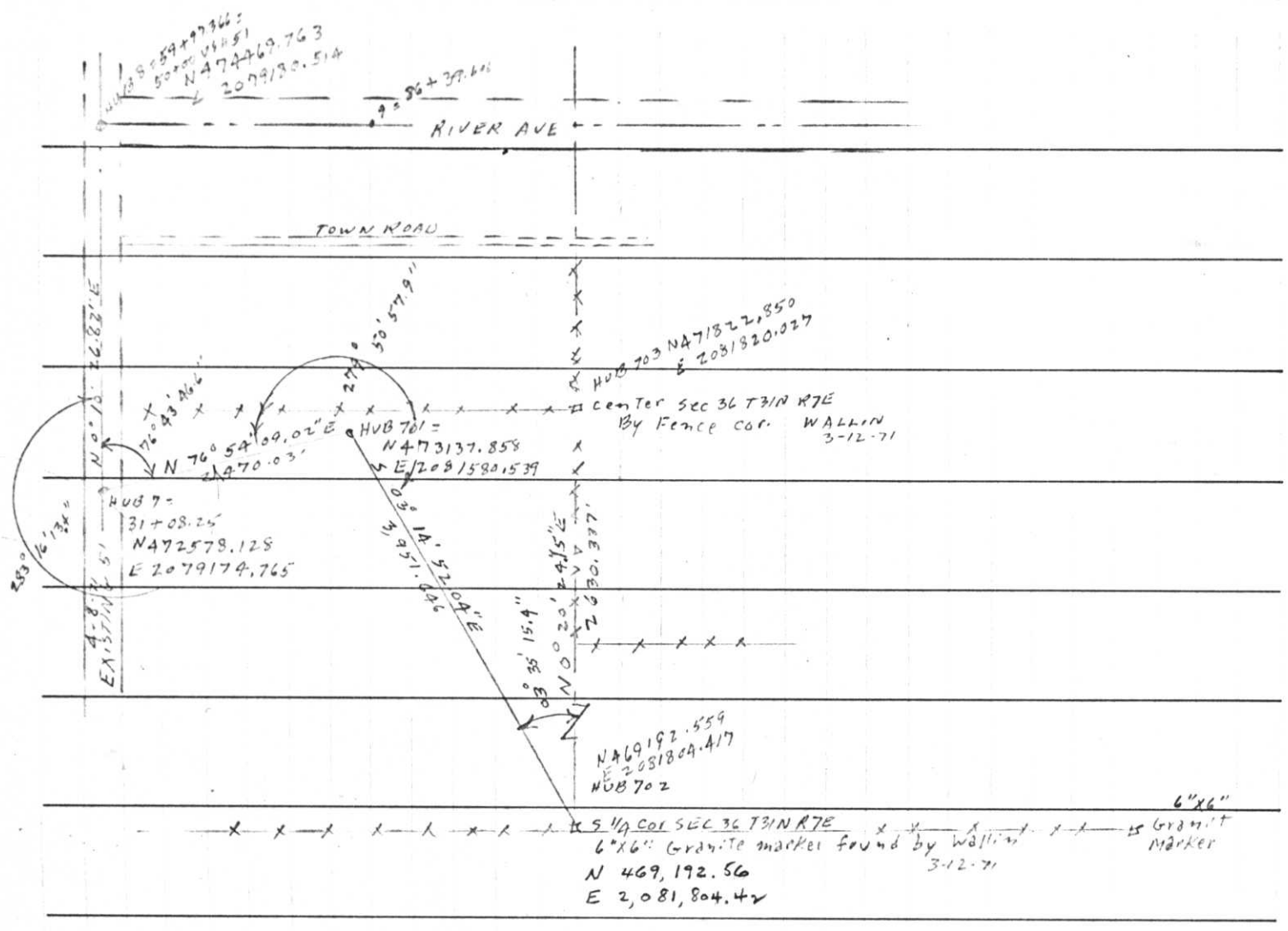


43106360020_South

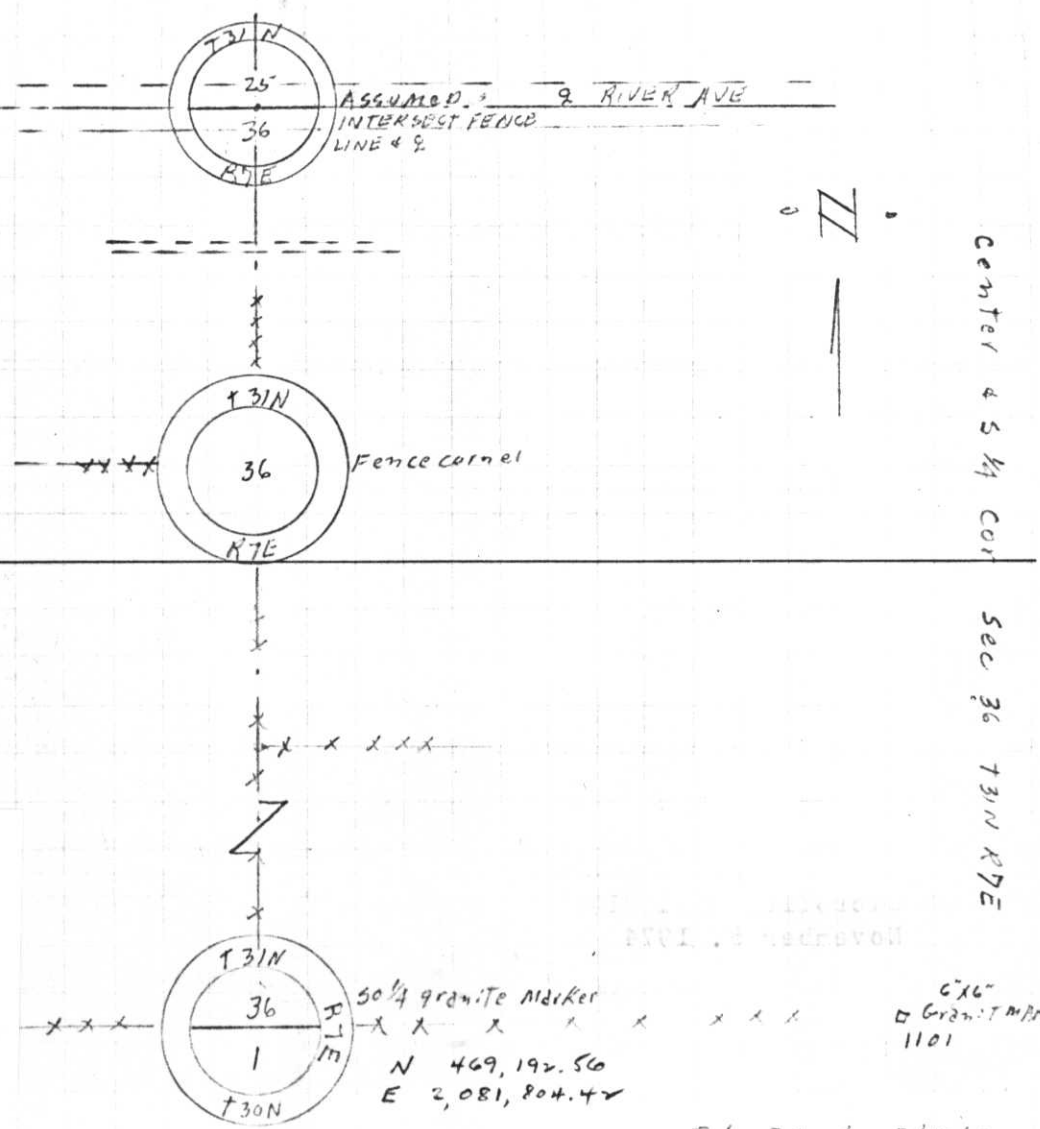


43106360020_East





Project I.D. 1173-2-00 So. Co. Line
 - 1.4 MI. N. Merrill U.S.H. 51
 Freeway Lincoln County Wm. Scheuer
 Surveyor Received from Division of
 Hw's Jan. 11. 1973



Ties gone
 per Aero-metric
 10/98

36-31-6 3/27/02 TD

1972

K-23