

U.S. PUBLIC LAND SURVEY MONUMENT RECORD

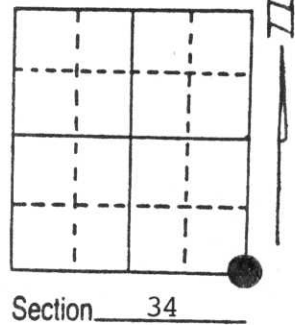
Note: This form is intended and designed to fulfill all requirements of Wisconsin Administrative Code, Chapter A-E 5.02, U.S. Public Land Survey Monument Record (3) (a) (b) (c) (d) (e) (f) (g) (h) (i). An additional sheet may be added if necessary to conform with said requirements.

(a) Corner location: Township 31 North

Range 6 East

Town/City/Village TN. SCOTT

County LINCOLN

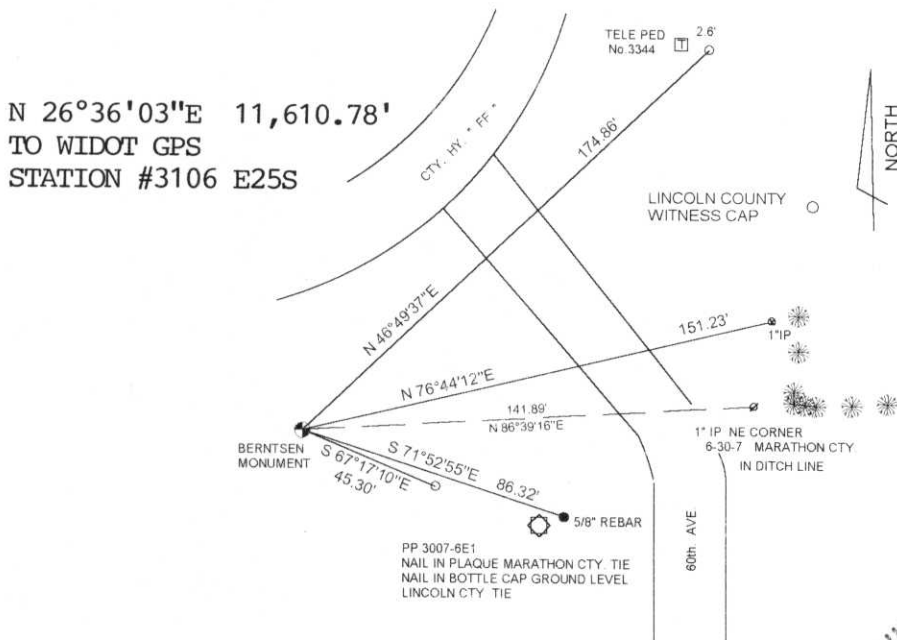


(b) (f) (g) (h) Description of monument found at this corner and if it was accepted, state all evidence (material, testimonial, occupational, plats, records, other monuments) used as a basis for accepting. If not accepted or if nothing was found, state evidence used as basis for establishing location. If reestablished through lost corner proportionate methods, indicate all monuments, distances and directions used to establish.

CTY. "FF" & 60th.AVE HAS BEEN CONTINUOUSLY RECONSTRUCTED OVER THE YEARS. NO EVIDENCE OF THE ORIGINAL CORNER. CHARLES OFFERMAN DID A SURVEY IN THE AREA IN 1975. HE SET AN IRON PIN - NO EVIDENCE OF HIS CORNER FOUND.

I RE-ESTABLISHED THE CORNER POSITION BY USE OF HIS SURVEY NOTES ON FILE IN THE TAX DESCRIPTION OFFICE. IN ADDITION, I FOUND THE POWER POLE TIE SET IN THAT SURVEY.

(c) (d) (e) Plan view of corner with ties to at least 4 witness monuments. If in disagreement with previously established corner, show the distances between the two corners and also indicate the ties to the disputed corner.



RECEIVED AT LINCOLN COUNTY
 COURTHOUSE THIS 4th DAY
 OF Oct 19 96
 [Signature] TAX DESCRIPTION OFFICE

(i) I, DAVID L. LEMKE
 (type or print name) certify that the corner location on this record was determined by me or under my direction and control and that this U.S. Public Land Survey Monument Record is correct and complete to the best of my knowledge and belief.

[Signature]
 Signature

OCTOBER 2, 1996
 Date



Index No. 4-17

MINNAPAC CAPITAL SURVEYING, INC.
SURVEY MONUMENT LOCATION RECORD

LANDMARK BENCHMARK

CORNER IDENTITY SE COR SEC 34
 DATE OF SURVEY APRIL 7, 1975
 WEATHER CLEAR, BREEZY
 TEMPERATURE 40°±
 SURVEY PARTY D. TRUSTY, D. MATTINGLY

FOUND
 SET
 RE-SET
 RE-FOUND

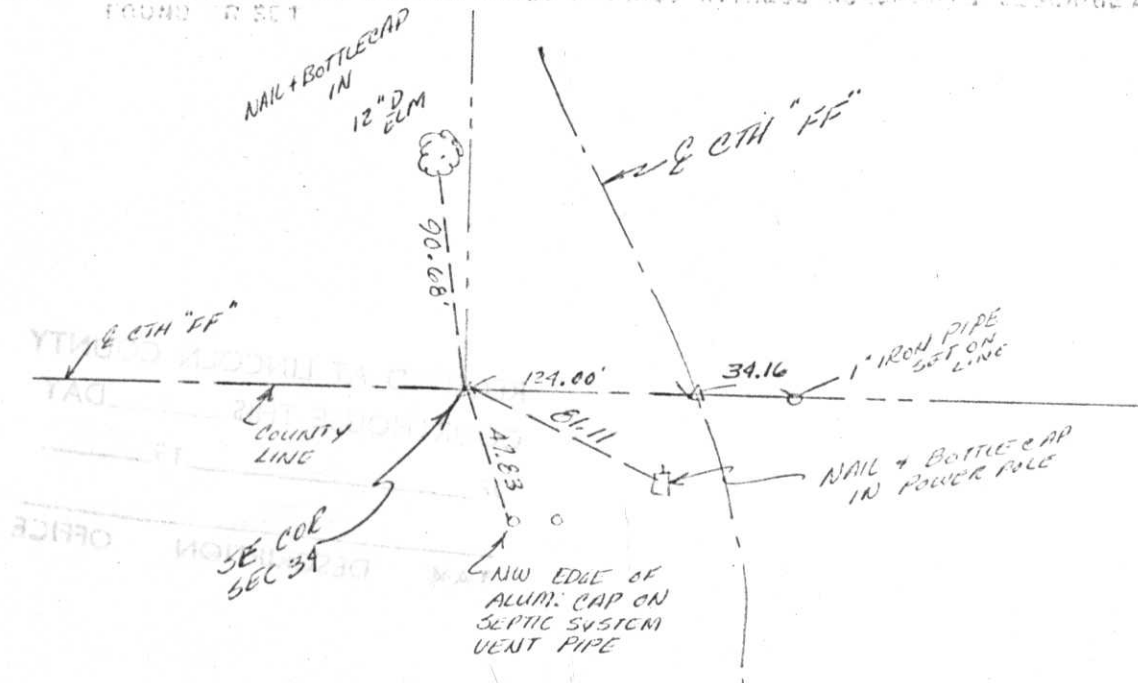
SECTION 34
 TOWNSHIP 31 N
 RANGE 6 E
SCOTT LINCOLN CO
 (S.W. 1/4, S. 34)



BASIS FOR MONUMENT LOCATION
 DESCRIBE METHOD OF SURVEY AND CORNER AUTHENTICATION

SEE SURVEY FOR HARTWIG - DOEPIKE

TIE SKETCH SHOW HORIZONTAL TIE DISTANCES TO FIXED WITNESS MONUMENTS. DESCRIBE ALL MONUMENTS FOUND OR SET.



Index No. 9-17