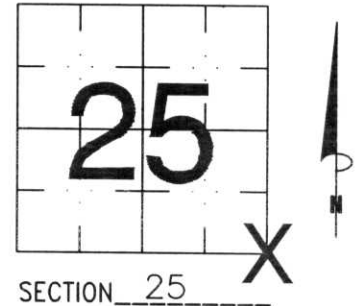


U.S. PUBLIC LAND SURVEY MONUMENT RECORD

NOTE: THIS FORM IS INTENDED AND DESIGNED TO FULFILL ALL REQUIREMENTS OF WISCONSIN ADMINISTRATIVE CODE, CHAPTER A-E 7.08 U.S. PUBLIC LAND SURVEY MONUMENT RECORD (3) (a) (b) (c) (d) (e) (f) (g) (h) (i). AN ADDITIONAL SHEET MAY BE ADDED IF NECESSARY TO CONFORM WITH SAID REQUIREMENTS.

(a) CORNER LOCATION: TOWNSHIP 31 NORTH
 RANGE 6 EAST/WEST
 TOWN/CITY/VILLAGE SCOTT
 COUNTY LINCOLN



(b) (f) (g) (h) DESCRIPTION OF MONUMENT FOUND AT THIS CORNER AND IF IT WAS ACCEPTED, STATE ALL EVIDENCE (MATERIAL, TESTIMONIAL, OCCUPATIONAL, PLATS, RECORDS, OTHER MONUMENTS) USED AS BASIS FOR ACCEPTING. IF NOT ACCEPTED OR IF NOTHING WAS FOUND, STATE EVIDENCE USED AS BASIS FOR ESTABLISHING LOCATION. IF REESTABLISHED THROUGH LOST CORNER PROPORTIONATE METHODS, INDICATE ALL MONUMENTS, DISTANCES AND DIRECTIONS USED TO ESTABLISH. INDICATE TYPE OF MONUMENT FOUND OR SET AND SIGN POST.

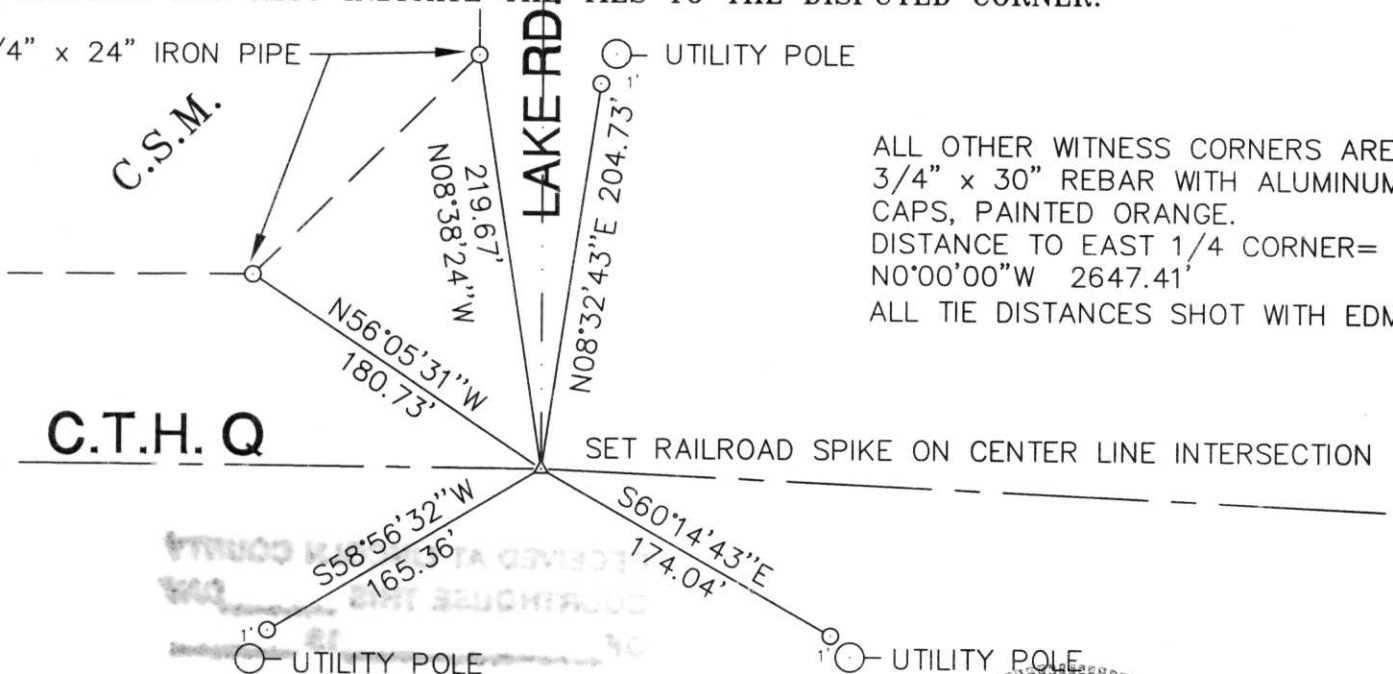
THIS IS THE SECOND TIME I REQUESTED TO DIG FOR THIS CORNER, AND THE SECOND TIME LINCOLN COUNTY HIGHWAY DEPARTMENT REFUSED TO LET ME DIG FOR IT. I FOUND A COUNTY PK NAIL HERE, PROBABLY SET BY BOB FERGOT, WHO USED IT FOR AN APPROXIMATE CORNER LOCATION. USING WI. D.O.T. HIGHWAY PLANS, I HELD THE CENTER LINE OF THE EXISTING PAVEMENT, AND THE EXISTING CENTER LINE OF LAKE ROAD TO SET THE CORNER. MY CORNER FELL 1 FOOT SOUTH OF THE COUNTY PK NAIL, WHICH I REMOVED. TIED OUT CORNER, SET RAIL ROAD SPIKE FOR CORNER.

HIGHWAY PLANS DID NOT SHOW ANY EXISTING MONUMENTS, IT WAS THEIR PLAN TO PUT THE CENTER LINE ON THE SECTION LINE.

FOUND NO OTHER EVIDENCE FOR CORNER.

(c) (d) (e) PLAN VIEW OF CORNER WITH TIES TO AT LEAST 4 WITNESS MONUMENTS. IF IN DISAGREEMENT WITH PREVIOUSLY ESTABLISHED CORNER, SHOW THE DISTANCES BETWEEN THE TWO CORNERS AND ALSO INDICATE THE TIES TO THE DISPUTED CORNER.

1-1/4" x 24" IRON PIPE UTILITY POLE



ALL OTHER WITNESS CORNERS ARE 3/4" x 30" REBAR WITH ALUMINUM CAPS, PAINTED ORANGE.
 DISTANCE TO EAST 1/4 CORNER = N0°00'00"W 2647.41'
 ALL TIE DISTANCES SHOT WITH EDM

(i) I, DAVID L. OSTERBRINK RLS
 (TYPE OR PRINT NAME) CERTIFY THAT THE CORNER LOCATION ON THIS RECORD WAS DETERMINED BY ME OR UNDER MY DIRECTION AND CONTROL AND THAT THIS U.S. PUBLIC LAND SURVEY MONUMENT RECORD IS CORRECT AND COMPLETE TO THE BEST OF MY KNOWLEDGE AND BELIEF.

David L. Osterbrink
 SIGNATURE 11-14-99 DATE



INDEX NO. 0-25