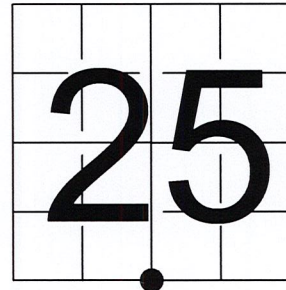


U S PUBLIC LAND SURVEY MONUMENT RECORD

NOTE: This form is intended and designed to fulfill all requirements of Wisconsin Administrative Code, Chapter A-E 7.08 U.S. Public Land Survey Monument Record (3) (a-i)

A-E 7.08(3)(a) Identity of corner:
 SOUTH 1/4 CORNER SECTION 25,
 TOWNSHIP 31 NORTH,
 RANGE 06 EAST OF THE 4TH PM,
 TOWN OF SCOTT,
 COUNTY OF LINCOLN

WISCORS - LINCOLN COUNTY
 N: 105,697.203 USft (105,697.110)
 E: 393,972.869 USft (393,972.910)
 Datum: NAD83 (2011)
 GNSS Method RTN - Direct
 GNSS Control WISCORS VRS



The coordinate value shown has been verified by the average of two or more GPS observations at a markedly different time. Coordinates shown in parenthesis are provided by Lincoln County.

A-E 7.08(3)(b)

Original Surveyor: Albert G. & Fredrick.S. Ellis

Date of Original Survey	Commenced:	March 9, 1852	Original Accessories:		
	Completed:	March 9, 1852	Hemlock	10	N 38° W 7 Links
			Birch	9	S 51° W 29 Links

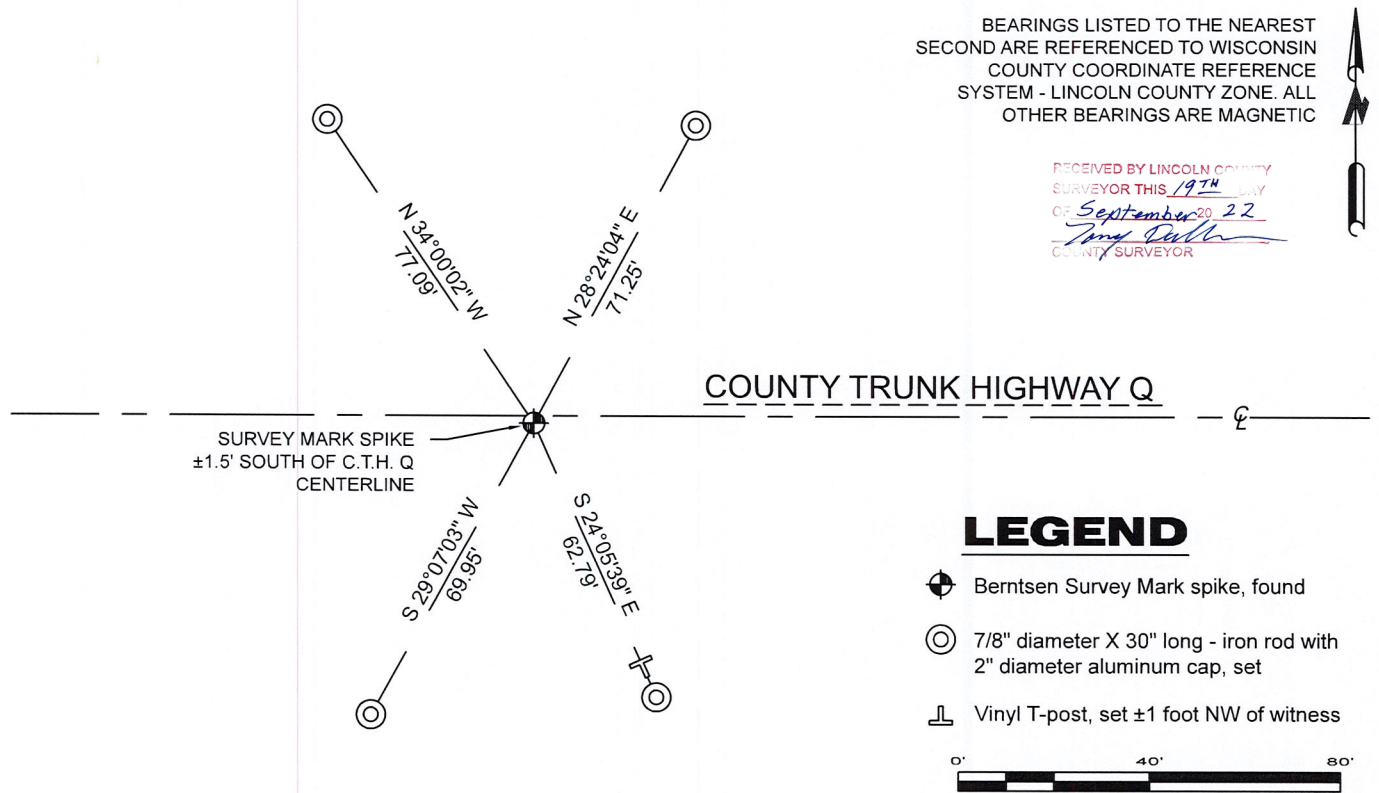
June 20, 1903 - Surveyors: L. Kleinschmidt and Herman Rusch - indicate they set a stone at this position on Map M56B.

August 29, 2005 - Surveyor 2142 - David A. Renaud - indicates this position as "SMP found" on Map M507B.

March 8, 2016 - Surveyor 1619 - Gary R. Krueger - indicates this position as "existing PK nail" on Map S697B.

April 19, 2022 - While performing the 2022 Lincoln County PLSS Corner Remonumentation and GPS Services project, I found a Berntsen Survey Mark steel spike near the computed position provided by Lincoln County. The monument is 1.5 feet south of C.T.H. Q centerline. I established 4 new reference monuments as shown below.

A-E 7.08(3)(c)(d) Plan view of corner with references to at least 4 witness monuments.



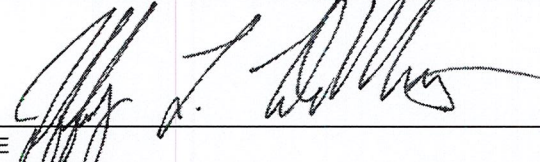
A-E 7.08(3)(e) 1852 Surveyor set a post, 1903 Surveyor set a stone, 2005 Surveyor found an SMP, and 2016 Surveyor found a PK nail. I found a Berntsen Survey Mark steel spike.

A-E 7.08(3)(f) I accept this monument as a FOUND PERPETUATED LOCATION of the corner.

A-E 7.08(3)(g)(h) This corner was not determined through lost-corner-proportionate methods.

A-E 7.08(3)(i) I, Jeffrey L. DeMuth, Professional Land Surveyor No. S-2656, hereby certify that the corner location on this record was determined by the Lincoln County Surveyor, and the monuments found or set as shown hereon were measured by me or under my direction and control, and that this U.S. Public Land Survey Monument Record is correct and complete to the best of my knowledge, and belief.



SIGNATURE  DATE September 16, 2022

U-23

REPORT

2022-Lincoln County PLSS Corner Remonumentation and GPS Services

Wisconsin Corner Point Identification Number: 43106250020
Surveyor: Jeffrey L. DeMuth – S2656
Corner monument: Found Berntsen “Survey Mark” steel spike.

Field Book: Cardinal North – Lincoln Co. Remon. – 2022-00
Page: 6

Horizontal Datum: WisCRS – Lincoln County Zone – NAD83(2011)

Date / time of initial measurement:
May 16, 2022 - Start 09:36:33 CDT – End 09:54:56 CDT

Reference monuments:
4 – Set - 7/8” diameter X 30” long iron rods with 2” diameter Lincoln Co. aluminum cap.

Coordinate Table

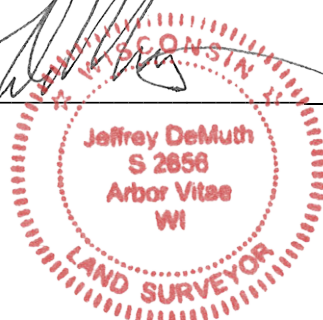
	County Provided	2022 Measurement	Difference
North	105697.110	105697.203	-0.09
East	393972.910	393972.869	0.04

Observed coordinates match existing calculated coordinates within reason.
Request Data Log for more information.

Additional Notes:

Corner falls $\pm 1.5'$ south of CTH Q centerline. There is a N-S tree line heading south from the corner.


Jeffrey L. DeMuth S-2656
September 16, 2022
Date



43106250020_Mon-N



43106250020_North



43106250020_West



43106250020_South



43106250020_East

