

U.S. PUBLIC LAND SURVEY MONUMENT RECORD

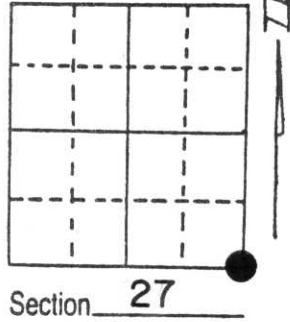
Note: This form is intended and designed to fulfill all requirements of Wisconsin Administrative Code, Chapter A-E 5.02, U.S. Public Land Survey Monument Record (3) (a) (b) (c) (d) (e) (f) (g) (h) (i). An additional sheet may be added if necessary to conform with said requirements.

(a) Corner location: Township 31 North

Range 6 East

Town/City/Village TN SCOTT

County LINCOLN



(b) (f) (g) (h) Description of monument found at this corner and if it was accepted, state all evidence (material, testimonial, occupational, plats, records, other monuments) used as a basis for accepting. If not accepted or if nothing was found, state evidence used as basis for establishing location. If reestablished through lost corner proportionate methods, indicate all monuments, distances and directions used to establish.

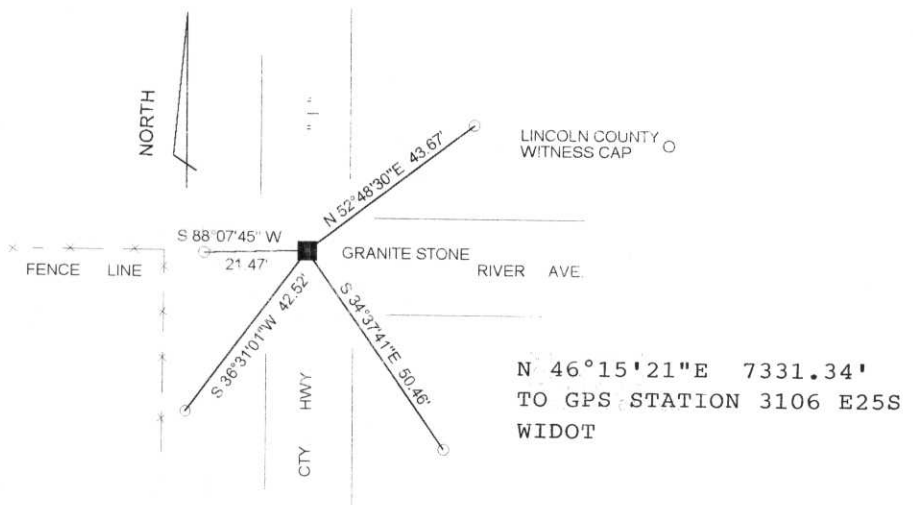
FOUND A PK NAIL SET C/L C/L HWY. "I" AND RIVER RD.

DUG THE INTERSECTION FOUND A 6"x6" GRANITE STONE ±4.5' TO THE NORTHWEST OF THE PK STONE LINED BY WITH FENCE LINE TO THE WEST AND IS ON THE NORTHERLY EDGE OF THE TRAVELED PORTION OF RIVER RD TO THE EAST.

PRESUME STONE SET BY LOUIS KLINESCHMIDT IN 1902 AS IT MATCHES OTHERS FOUND IN THE AREA

(c) (d) (e) Plan view of corner with ties to at least 4 witness monuments. If in disagreement with previously established corner, show the distances between the two corners and also indicate the ties to the disputed corner.

RECEIVED AT LINCOLN COUNTY
 COURTHOUSE THIS 28th DAY
 OF June 1996
 OF Pat Pruber
 TAX DESCRIPTION OFFICE



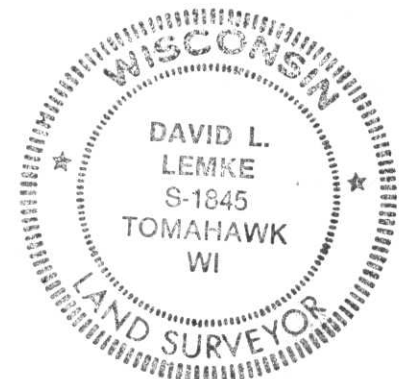
(i) I, DAVID L. LEMKE
 (type or print name) certify that the corner location on this record was determined by me or under my direction and control and that this U.S. Public Land Survey Monument Record is correct and complete to the best of my knowledge and belief.

Signature

David L. Lemke

JUN 18 1996

Date



Index No. 0-17