

# Attachment to Tie Sheet S-23, T31N, R6E

43106252020

I visited the corner on 9/21/2023 to verify the corner and reference tie monumentation. I found a 6"x6" Granite Monument flush with ground, leaning Southerly, 3 of Nathan Wincentsen's ties(6/25/2001) and Gary Krueger's 1 1/4" O.D Iron Pipe(CSM #2031 4/11/2007) North of the Monument. Reset the Granite Monument plumb and all ties agree.

*Anthony R. Dallman* 02/16/24

Anthony R. Dallman, PLS-2405

Lincoln County Surveyor



Stock No. 26273

# U.S. PUBLIC LAND SURVEY MONUMENT RECORD

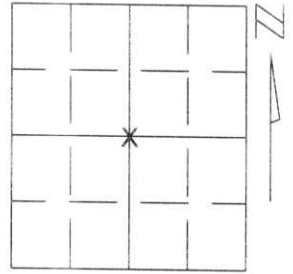
Note: This form is intended and designed to fulfill all requirements of Wisconsin Administrative Code, Chapter A-E 5.02, U.S. Public Land Survey Monument Record (3)(a)(b)(c)(d)(e)(f)(g)(h)(i). An additional sheet may be added if necessary to conform with said requirements.

(a) Corner location: Township 31 North

Range 6 East

Town/City/Village SCOTT

County LINCOLN



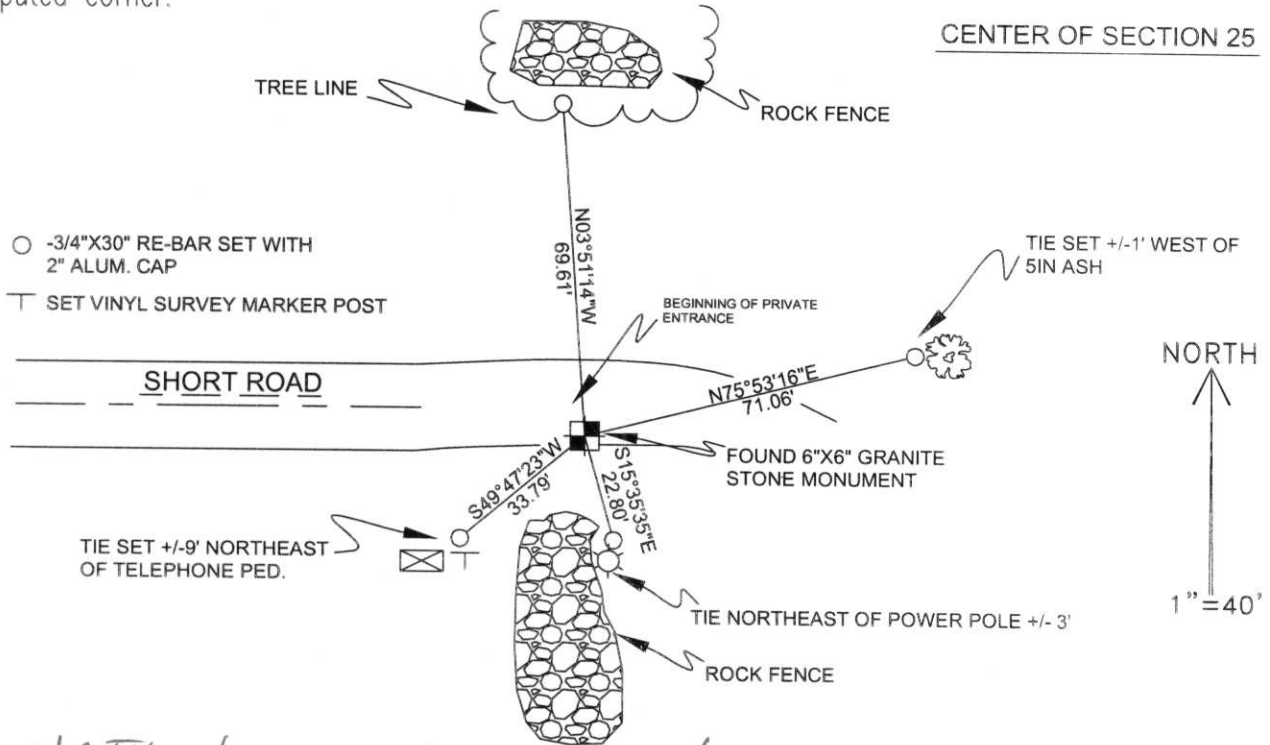
Section 25

(b)(f)(g)(h) Description of monument found at this corner and if it was accepted, state all evidence (material, testimonial, occupational, plats, records, other monuments) used as a basis for accepting. If not accepted or if nothing was found, state evidence used as basis for establishing location. If reestablished through lost corner proportionate methods, indicate all monuments, distances and directions used to establish.

FOUND 6"X6" GRANITE STONE BY USING DISTANCE REFERENCED ON LINCOLN COUNTY TIE SHEET FROM THE WEST 1/4 OF SECTION 25, T31N, R6E., AND INFORMATION FOUND ON D.O.T. HIGHWAY RIGHT-OF-WAY PLAT FOR COUNTY TRUNK HIGHWAY "Q" HELD POSITION OF STONE AS THE CENTER OF SECTION 25.



(c)(d)(e) Plan view of corner with ties to at least 4 witness monuments. If in disagreement with previously established corner, show the distances between the two corners and also indicate the ties to the disputed corner.



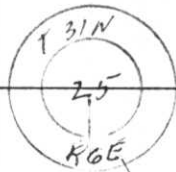
(i) I, NATHAN J. WINCENTSEN  
(type or print name) certify that the corner location on this record was determined by me or under my direction and control and that this U.S. Public Land Survey Monument Record is correct and complete to the best of my knowledge and belief.

Nathan J. Wincentzen Signature      6-25-01 Date

RECEIVED AT LINCOLN COUNTY COURTHOUSE THIS 18th DAY OF July 20 01  
Tony Wallman  
LAND INFORMATION OFFICE

Index No. 5-23

47.



6" X 6" GRANIT MARKER  
CENTER SEC 25 T31N RGE FOUND BY WALLIN  
3-12-71  
1901 N 477,106.46  
E 2,081,831.16

2696.56

N 34° 15' 10.255" W  
3201.780

N 77° 44' 19.3"  
E 2081822.742  
= 86+39.602

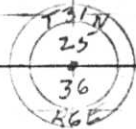
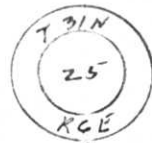
RIVER AVE

HUB 9  
S 59° 56' 10.05" E

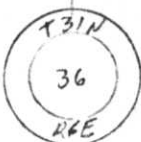
37+83.33

HUB 10 = 104+50.03  
N 47° 44' 59.925"  
E 2083633.165

Project I.D. 1173-2-00 So. Co. Line  
- 1.4MI. N. Merrill U.S.H. 51  
Freeway Lincoln County Wm. Scherer  
Surveyor Received from Division of  
Hwy's Jan. 11. 1973



RIVER AVE



1972

Index No. 5-23

43