

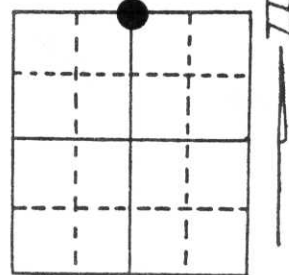
# U.S. PUBLIC LAND SURVEY MONUMENT RECORD

Note: This form is intended and designed to fulfill all requirements of Wisconsin Administrative Code, Chapter A-E 5.02, U.S. Public Land Survey Monument Record (3) (a) (b) (c) (d) (e) (f) (g) (h) (i). An additional sheet may be added if necessary to conform with said requirements.

(a) Corner location: Township 31 North  
 Range 6 East

Town/City/Village TN SCOTT

County LINCOLN



Section 26

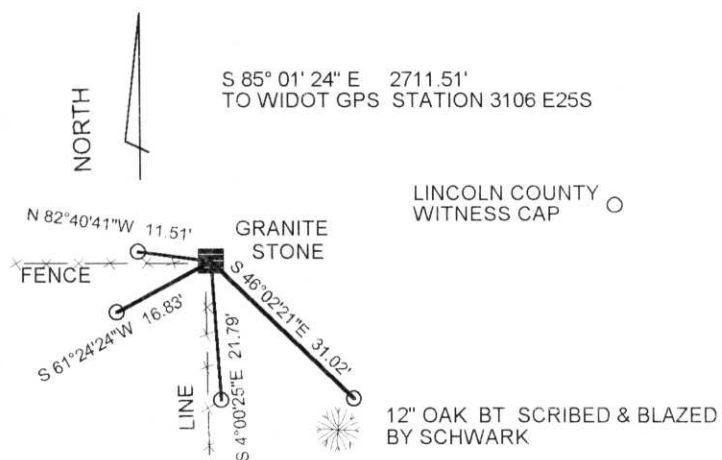
(b) (f) (g) (h) Description of monument found at this corner and if it was accepted, state all evidence (material, testimonial, occupational, plats, records, other monuments) used as a basis for accepting. If not accepted or if nothing was found, state evidence used as basis for establishing location. If reestablished through lost corner proportionate methods, indicate all monuments, distances and directions used to establish.

1980 Sheridan Schwark found a stone probably set by Louis Klineschmidt in 1902  
 Sheridan set 3 witness tie to the stone

I found the stone and 1 of Sheridan's ties.

**RECEIVED AT LINCOLN COUNTY  
 COURTHOUSE THIS 28th DAY  
 OF June 19 96  
*Pat Priebe*  
 TAX DESCRIPTION OFFICE**

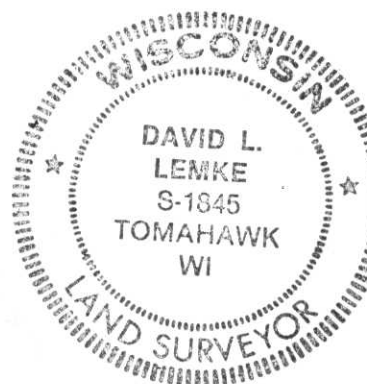
(c) (d) (e) Plan view of corner with ties to at least 4 witness monuments. If in disagreement with previously established corner, show the distances between the two corners and also indicate the ties to the disputed corner.



(i) I, DAVID L. LEMKE.  
 (type or print name) certify that the corner location on this record was determined by me or under my direction and control and that this U.S. Public Land Survey Monument Record is correct and complete to the best of my knowledge and belief.

*David L. Lemke*  
 Signature

JUN. 18 1996  
 Date



Index No. Q-19

CERTIFIED LAND CORNER RESTORATION

Index No. Q-19

State of Wisconsin }  
 County of Lincoln } ss.

History of original corner establishment:

Wood post set by original government surveyor.

I, Sheridan D. Schwark, do hereby certify that on the 1st day of October, 1980, I found evidence of the S1/4 corner of Section 23 Township 31, North, Range 6 East, Fourth, Principal Meridian, as described hereon; and that from this evidence I established a new monument and accessories as described hereon to perpetuate the original location of this corner.

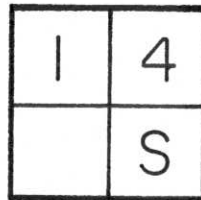
Description of corner evidence found:

We found a 6" x 6" red granite monument at a fence corner. The stone was tipped slightly. We straightened the stone and packed rock around it. The stone was left up approximately 1'. The stone was set by Louis Kleinschmidt (Land Surveyor) in 1903. The map of his resurvey is recorded in the Register of Deeds office.

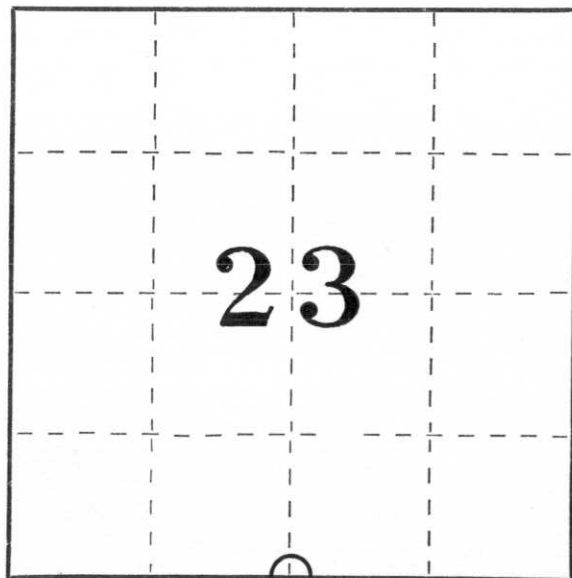
Resident witnesses:

.....  
 .....  
 .....

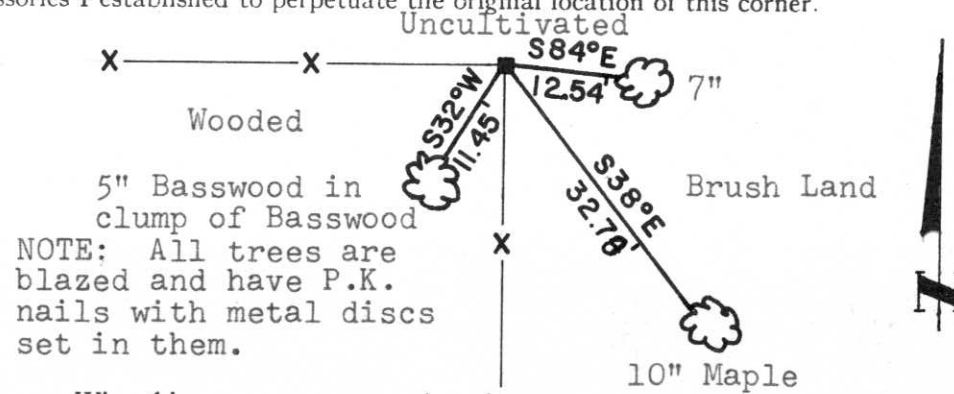
Description of monument and accessories I established to perpetuate the original location of this corner.



Detail of Stone  
 (read when facing South)



○ = Corner monument restored.



NOTE: All trees are blazed and have P.K. nails with metal discs set in them.

Dated at Wausau, Wis., this \_\_\_\_\_ day of \_\_\_\_\_, 19\_\_\_\_\_

Signature Sheridan D. Schwark Title Registered Land Surveyor Registration No. S-1205  
 (County Surveyor, Registered Land Surveyor, or other duly authorized official)

Office of Register of Deeds, County of \_\_\_\_\_, I hereby certify that the within instrument was filed in this office for record on the \_\_\_\_\_ day of \_\_\_\_\_, 19\_\_\_\_\_ at \_\_\_\_\_ o'clock \_\_\_\_\_ M.

.....  
 (Register of Deeds)

By \_\_\_\_\_ Deputy