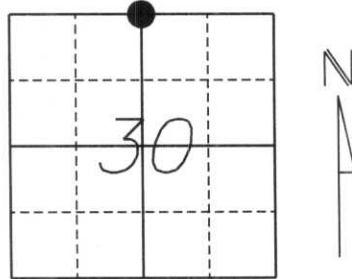


U.S. PUBLIC LAND SURVEY MONUMENT RECORD

Note: This form is intended and designed to fulfill all requirements of Wisconsin Administrative Code, Chapter A-E 5.02, U.S. Public Land Survey Monument Record (3) (a) (b) (c) (d) (e) (f) (g) (h) (i). An additional sheet may be added if necessary to conform with said requirements.

(a) Corner location: Township 31 North
 Range 6 East
 Town/City/Village SCOTT
 County LINCOLN



Section 30

(b) (f) (g) (h) Description of monument found at this corner and if it was accepted, state all evidence (material, testimonial, occupational, plats, records, other monuments) used as a basis for accepting. If not accepted or if nothing was found, state evidence used as a basis for establishing location. If reestablished through lost corner proportionate methods, indicate all monuments, distances and directions used to establish.

History of original corner established:

Original Survey was March, 1852 by F.S. Ellis. Original corner was a wooden post with bearing trees:

- 12" Hemlock, S25°W, 4 lks.*
- 11" Hemlock, S35°W, 15 lks.*

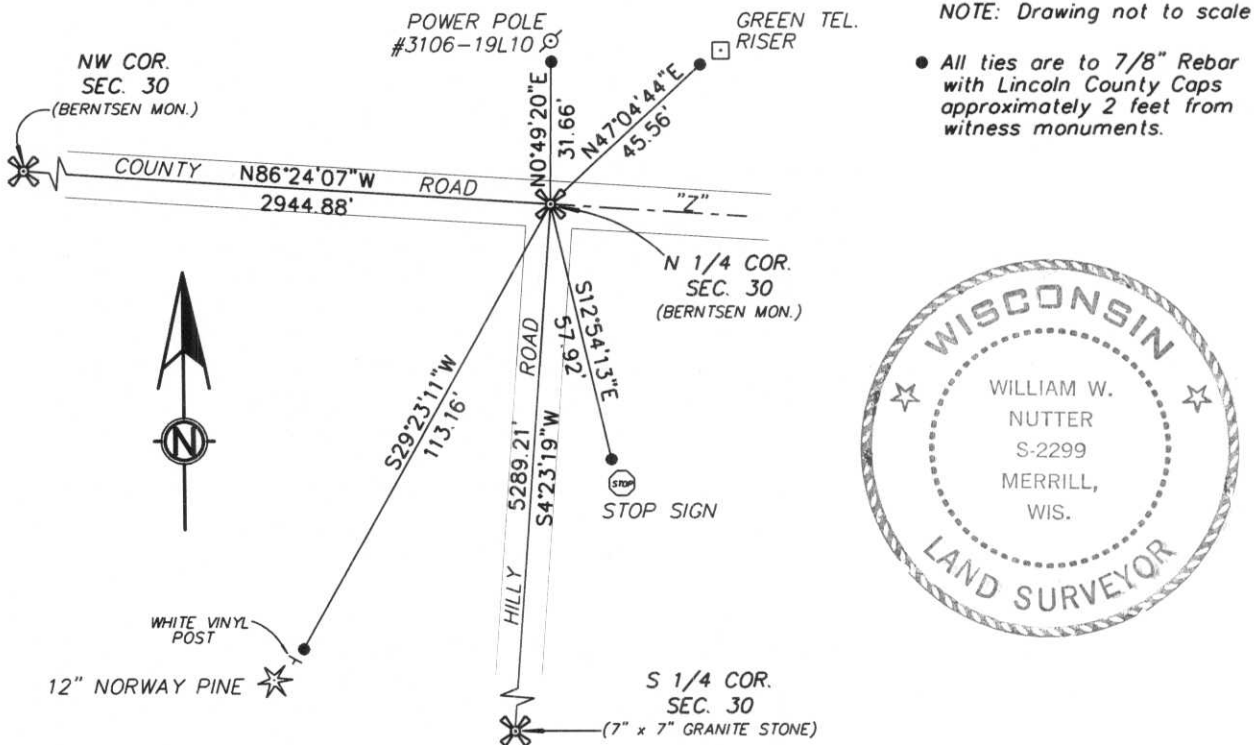
On August 12th, 1982 Sheridan D. Schwark excavated with a backhoe and found a 6"x6" red Granite approximately 1.5 feet below the surface and set a 1"x24" Iron Rod at North edge of monument and set a Lincoln County Berntsen Monument above the granite with the following references:

- 1"x24" Iron Rod +-1' North of Stop sign S15°E, 57.57'*
- Spike in 5" Red Pine S40°W, 71.39'*
- Spike in Power Pole #3106-19-L10 N1°W, 33.93'*

Description of corner evidence found:

We located a Berntsen Monument along the centerline of County Road "Z" 1" below surface. We accepted this position and tied to 7/8" rebar with Lincoln County Caps.

(c) (d) (e) Plan view of corner with ties to at least 4 witness monuments. If in disagreement with previously established corner, show the distances between the two corners and also indicate the ties to the disputed corner.



NOTE: Drawing not to scale
 • All ties are to 7/8" Rebar with Lincoln County Caps approximately 2 feet from witness monuments.

(i) I, William W. Nutter RLS, S-2299
 (type or print name) certify that the corner location on this record was determined by me or under my direction and control and that this U.S. Public Land Survey Monument Record is correct and complete to the best of my knowledge and belief.

William W. Nutter 3-10-2004
 Signature Date

(revised 2/97)

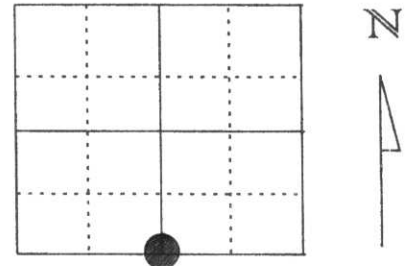
Index No.

P-3

U.S. PUBLIC LAND SURVEY MONUMENT RECORD

Note: This form is intended and designed to fulfill all requirements of Wisconsin Administrative Code, Chapter A-E 5.02, U.S. Public Land Survey Monument Record (3) (a) (b) (c) (d) (e) (f) (g) (h) (l). An additional sheet may be added if necessary to conform with said requirements.

(a) Corner location: Township 31 North
 Range 6 East
 Town/City/Village TN. OF SCOTT
 County Lincoln



Section 19

(b) (f) (g) (h) Description of monument found at this corner and if it was accepted, state all evidence (material, testimonial, occupational, plats, records, other monuments) used as a basis for accepting. If not accepted or if nothing was found, state evidence used as basis for establishing location. If reestablished through lost corner proportionate methods, indicate all monuments, distances and directions used to establish.

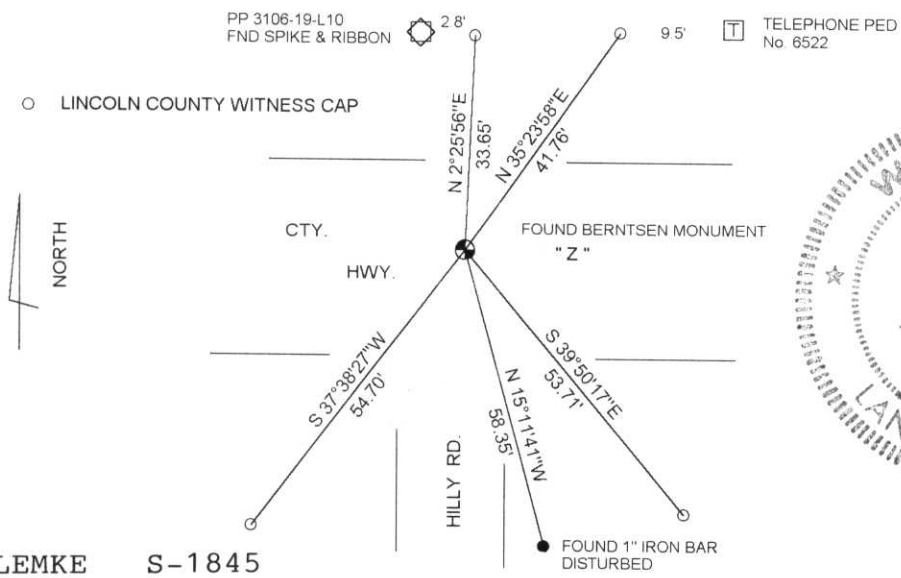
AUGUST 1982 SHERIDAN SCHWARK RECOVERED A 6"X6" GRANITE STONE 1.5' BELOW THE PAVEMENT. HE SET A BERNTSEN MONUMENT ON TOP OF THE STONE AT THE PAVEMENT SURFACE. ALSO SET 3 WITNESS POINT TO THE CORNER.

MARCH 1998 I FOUND THE BERNTSEN MONUMENT AT THE ROAD SURFACE AT C/L C/L OF HWY. " Z " AND HILLY ROAD. ALSO FOUND THE POWER POLE AND 1" IRON BAR REFERENCE POINTS SET BY SHERIDAN AND THE POSSIBLE RED PINE STUMP REFERENCE

RESET LINCOLN COUNTY WITNESS CAPS AS SHOWN.

(c) (d) (e) Plan view of corner with ties to at least 4 witness monuments. If in disagreement with previously established corner, show the distances between the two corners and also indicate the ties to the disputed corner.

RECEIVED AT LINCOLN COUNTY
 COURTHOUSE THIS 14th DAY
 OF April 19 98
 TAX DESCRIPTION OFFICE
Pat Priebe



DAVID L. LEMKE S-1845

(l) I, DAVID L. LEMKE (type or print name) certify that the corner location on this record was determined by me or under my direction and control and that this U.S. Public Land Survey Monument Record is correct and complete to the best of my knowledge and belief.

MAR. 30 1998

Signature

Date

CERTIFIED LAND CORNER RESTORATION

Index No. Q-3

State of Wisconsin } ss.
County of Lincoln

History of original corner establishment:
Wood post set by original government surveyor.

I, Sheridan D. Schwark, do hereby certify that on the 12th day of August, 1982, I found evidence of the South one-quarter corner of Section 19 Township 31 North, Range 6 East, Fourth, Principal Meridian, as described hereon; and that from this evidence I established a new monument and accessories as described hereon to perpetuate the original location of this corner.

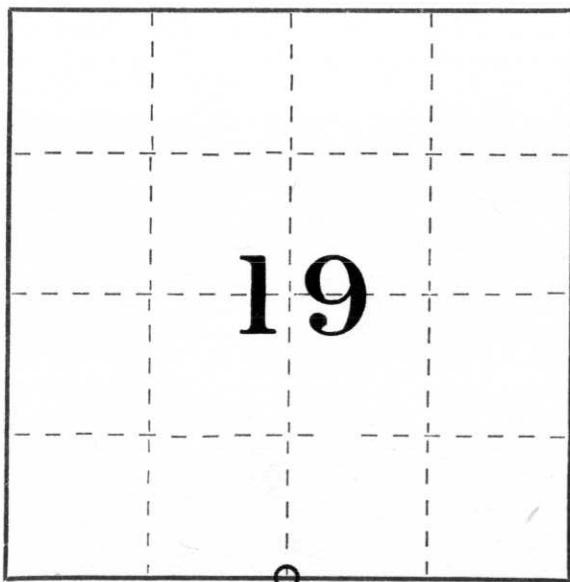
Resident witnesses:

.....
.....
.....

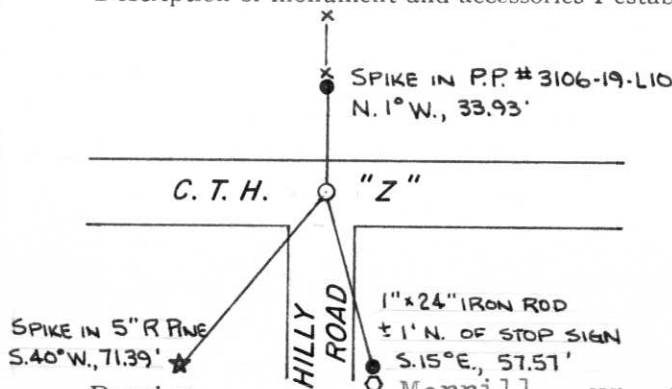
Description of corner evidence found:

We excavated the blacktop road at the centerline intersection, Brad Mattson backhoe operator, and found a 6" x 6" red granite approximately 1.5 feet below the surface. The granite was in good shape so we set a 1" x 24" solid round iron rod at the north edge of the monument. We also set a Lincoln County Berntsen cap on 2-6" extensions above the granite. The references shown below were established to aid in recovery of the corner in the future.

Description of monument and accessories I established to perpetuate the original location of this corner.



○ = Corner monument restored.



Dated at Merrill, Wis., this 23rd day of August, 1982

Signature: Sheridan D. Schwark Title: Registered Land Surveyor Registration No. S-1205
(County Surveyor, Registered Land Surveyor, or other duly authorized official)

Office of Register of Deeds, County of _____, I hereby certify that the within instrument was filed in this office for record on the _____ day of _____, 19____ at _____ o'clock _____ M.

(Register of Deeds)

By _____ Deputy