

U.S. PUBLIC LAND SURVEY MONUMENT RECORD

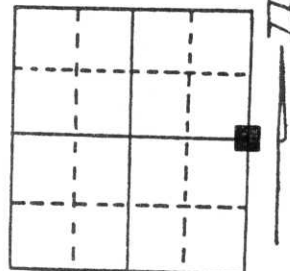
Note: This form is intended and designed to fulfill all requirements of Wisconsin Administrative Code, Chapter A-E 5.02, U.S. Public Land Survey Monument Record (3) (a) (b) (c) (d) (e) (f) (g) (h) (i). An additional sheet may be added if necessary to conform with said requirements.

(a) Corner location: Township 31 North

Range 6 East

Town/City/Village TN SCOTT

County LINCOLN



Section 22

(b) (f) (g) (h) Description of monument found at this corner and if it was accepted, state all evidence (material, testimonial, occupational, plats, records, other monuments) used as a basis for accepting. If not accepted or if nothing was found, state evidence used as basis for establishing location. If reestablished through lost corner proportionate methods, indicate all monuments, distances and directions used to establish.

1903 LOUIS KLINESCHMIDT SET A STONE

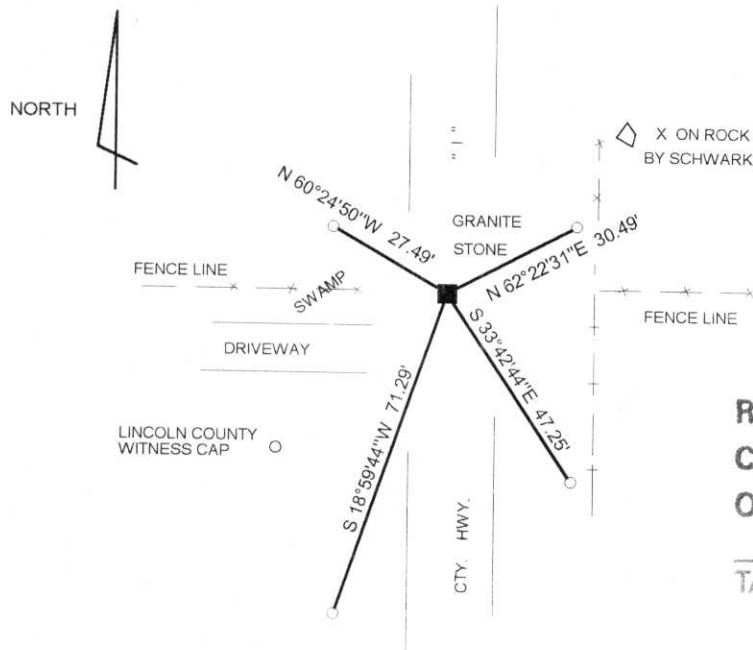
JULY 1972 BOB WINAT FOUND A 4"x5" RED GRANITE STONE WITH AN "X" ON TOP 6" BELOW THE ROAD SURFACE. HE SET A 11/8" IRON ROD ON THE EAST SIDE OF THE STONE.

1971 THE HWY. DEPT. RESET TO STONE WHEN A CULVERT WAS REPLACED.

OCTOBER 1980 SHERIDAN SCHWARK CHECKED WINAT'S CORNER TIES AND SET A PK NAIL OVER THE STONE. IN ADDITION, TIED THE PK NAIL TO THREE WITNESS POINTS.

I FOUND A PK NAIL SET BY TOM RADENZ FOR THE CORNER IN MAY OF 1995. WE DUG THE AREA AND FOUND THE STONE AND IRON BAR CALLED FOR BY WINAT, IN 1972. IN ADDITION FOUND THE "X" ON THE ROCK ESTABLISHED BY SHERIDAN SCHWARK - DISTANCE CHECKED. NO OTHER TIES WERE FOUND.

(c) (d) (e) Plan view of corner with ties to at least 4 witness monuments. If in disagreement with previously established corner, show the distances between the two corners and also indicate the ties to the disputed corner.



S 62°08'45"E 6096.86'
TO GPS STATION 3106 E25S
WIDOT

RECEIVED AT LINCOLN COUNTY
COURTHOUSE THIS 28th DAY
OF June 19 96
Pat Priebe
TAX DESCRIPTION OFFICE

(i) I, DAVID L. LEMKE
(type or print name) certify that the corner location on this record was determined by me or under my direction and control and that this U.S. Public Land Survey Monument Record is correct and complete to the best of my knowledge and belief.

Signature

JUN. 18 1996
Date



Index No. 0-17

CERTIFIED LAND CORNER RESTORATION

Index No. 0-17

State of Wisconsin }
County of Lincoln } ss.

History of original corner establishment:

Wood post by original government surveyor.

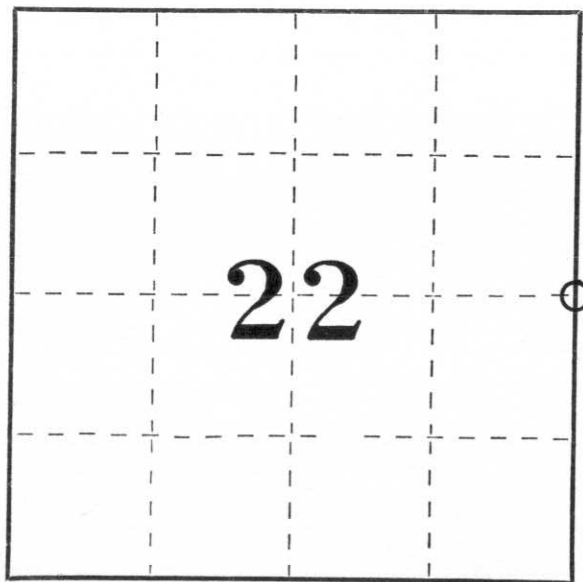
I Sheridan D. Schwark, do hereby certify that on the 15th day of October, 19 80, I found evidence of the East one-quarter corner of Section 22 Township 31, North, Range 6 East, Fourth, Principal Meridian, as described hereon; and that from this evidence I established a new monument and accessories as described hereon to perpetuate the original location of this corner.

Description of corner evidence found: On July 11, 1972 Robert Winat, R.L.S. no. S-1040 found a 4" x 5" red granite monument with an X on top 6" below the road surface. He set a 1 1/8" iron rod on the east side of the stone flush with the top of the stone. According to the Lincoln County Highway Dept., they reset the stone in 1971 when they replaced a culvert. The stone was originally set by Louis Kleinschmidt (Land Surveyor) in 1903. The map of his resurvey is recorded in the Register of Deeds office. We checked the reference points which Mr. Winat set and set a P.K. nail directly over the stone.

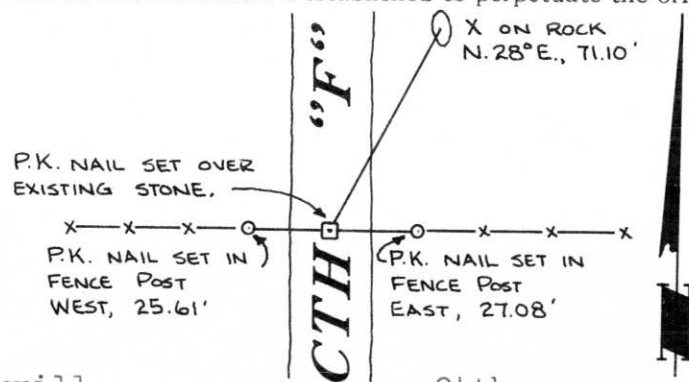
Resident witnesses:

.....
.....
.....

Description of monument and accessories I established to perpetuate the original location of this corner.



○ = Corner monument restored.



Dated at Merrill, Wis., this 24th day of October, 19 80.

Signature Sheridan D. Schwark Title Registered Land Surveyor Registration No. S-1205
(County Surveyor, Registered Land Surveyor, or other duly authorized official)

Office of Register of Deeds, County of....., I hereby certify that the within instrument was filed in this office for record on the..... day of....., 19..... at..... o'clock..... M.

.....
(Register of Deeds)

By..... Deputy