

U.S. PUBLIC LAND SURVEY MONUMENT RECORD

Note: This form is intended and designed to fulfill all requirements of Wisconsin Administrative Code, Chapter A-E 7.08, U.S. Public Land Survey Monument Record (3) (a) (b) (c) (d) (e) (f) (g) (h) (i). An additional sheet may be added if necessary to conform with said requirements.

(a) Corner location: Township 31 North
 Range 6 East
 Town/City/ Village SCOTT
 County Lincoln



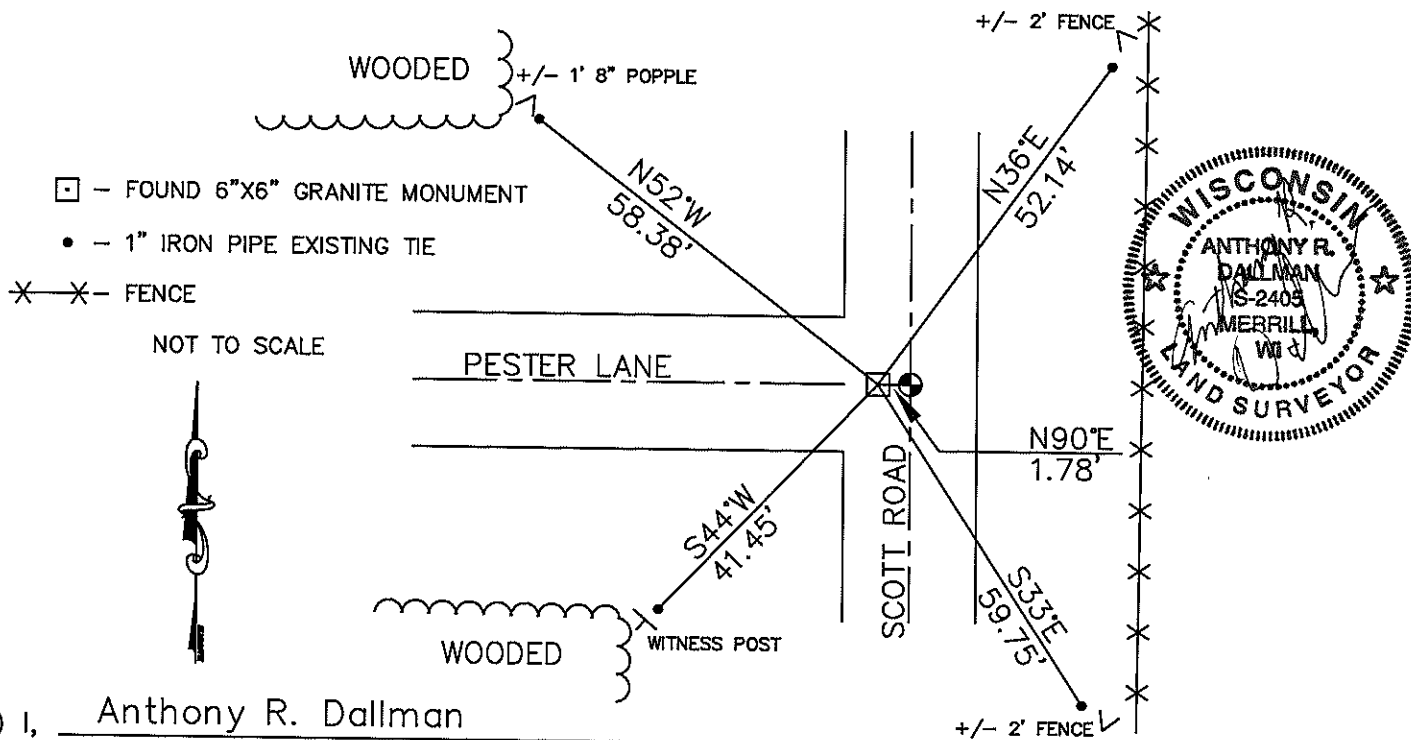
(b) (f) (g) (h) Description of monument found at this corner and if it was accepted, state all evidence (material, testimonial, occupational, plats, records, other monuments) used as a basis for accepting. If not accepted or if nothing was found, state evidence used as basis for establishing location. If reestablished through lost corner proportionate methods, indicate all monuments, distances and directions used to establish.

1852 - Ellis, F.S. set 1/4 post hemlock 10 S68°E 21 links
 hemlock 14 N81°W 14 links

1995 - Radenz, Thomas A. excavated a 5'x5'x5' hole at CL CL intersection Pester Lane and Scott Road. No evidence found. Set monument at split between the NW and SW corners of the Section. Position is also CL CL intersection.

2003 - Dallman, Anthony R. dug for corner and found a 6"x6" granite monument leaning with top 12" chipped away on one edge, down +/- 4', 1.78' west of existing berntsen monument. Repulled ties to stone.

(c) (d) (e) Plan view of corner with ties to at least 4 witness monuments. If in disagreement with previously established corner, show the distance between the two corners and also indicate the ties to the disputed corner.



(i) I, Anthony R. Dallman
 (type or print name) certify that the corner location on this record was determined by me or under my direction and control and that this U.S. Public Land Survey Monument Record is correct and complete to the best of my knowledge and belief.

Anthony R. Dallman
 Signature

11/13/08
 Date

Index No. 013



Transportation • Municipal • Site Development • GPS
Remediation • Environmental Assessments • Emergency Response • Safety

August 8, 2003

Tony Dallman
Lincoln County Surveyor
1110 East Main Street
Merrill, WI 54452

Subject: Section Corner Tie – West $\frac{1}{4}$ Section 22-31-6E.

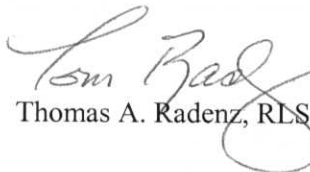
Dear Mr. Dallman:

REI remonumented the referenced corner on May 23, 1995 and provided your office with a Tie Sheet. In an effort to locate the true position of the corner REI excavated the location and did not find evidence of a Section Corner Monument.

It is our understanding that a recent excavation adjacent to the area earlier excavated uncovered a stone monument. We also understand that you feel this position represents the true location of the West $\frac{1}{4}$ corner of said Section 22.

Please remove our Section Corner Tie Sheet from record to prevent any additional surveys being tied to our earlier position. We accept your position for the West $\frac{1}{4}$ corner as monumented.

Sincerely,
REI


Thomas A. Radenz, RLS

U.S. PUBLIC LAND SURVEY MONUMENT RECORD

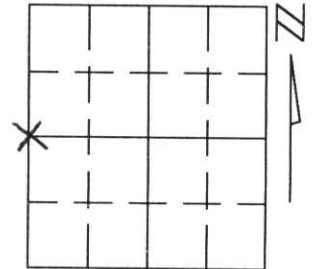
Note: This form is intended and designed to fulfill all requirements of Wisconsin Administrative Code, Chapter A-E 5.02, U.S. Public Land Survey Monument Record (3)(a)(b)(c)(d)(e)(f)(g)(h)(i). An additional sheet may be added if necessary to conform with said requirements.

(a) Corner location: Township 31 North

Range 6 East

Town/City/Village SCOTT

County LINCOLN

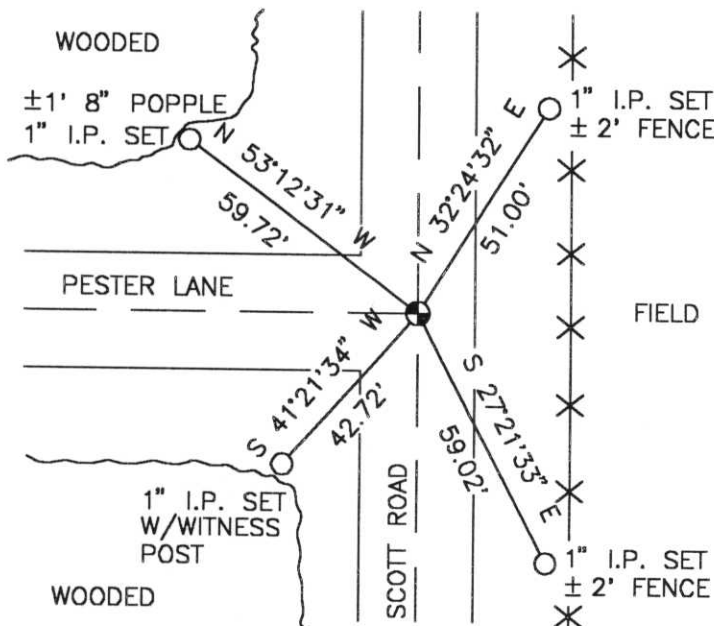


Section 22

(b)(f)(g)(h) Description of monument found at this corner and if it was accepted, state all evidence (material, testimonial, occupational, plats, records, other monuments) used as a basis for accepting. If not accepted or if nothing was found, state evidence used as basis for establishing location. If reestablished through lost corner proportionate methods, indicate all monuments, distances and directions used to establish.

WE EXCAVATED A HOLE 5'x5'x5' AT THE C - C LOCATION. NO EVIDENCE OF THE ORIGINAL MONUMENT OR SUBSEQUENT MONUMENTS FOUND. I SET THE MONUMENT AT A SPLIT BETWEEN THE NW & SW CORNERS OF THE SECTION. THIS POSITION ALSO FITS C - C WHICH IS THE BEST EVIDENCE OF THE ORIGINAL CORNER LOCATION.

(c)(d)(e) Plan view of corner with ties to at least 4 witness monuments. If in disagreement with previously established corner, show the distances between the two corners and also indicate the ties to the disputed corner.



(i) I, Thomas A. Radenz, R.L.S. No. 2095
 (type or print name) certify that the corner location on this record was determined by me or under my direction and control and that this U.S. Public Land Survey Monument Record is correct and complete to the best of my knowledge and belief.

Thomas A. Radenz
 Signature

5-23-95
 Date



Index No. 0-13

20 10:15 AM





20 10:17 AM

20 10:18 AM



20 10:18 AM



20 10:22 AM





20 10:23 AM



20 10:45 AM