

# U.S. PUBLIC LAND SURVEY MONUMENT RECORD

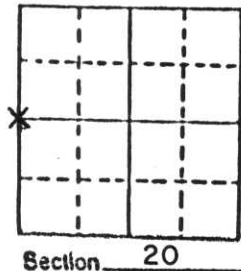
Note: This form is intended and designed to fulfill all requirements of Wisconsin Administrative Code, Chapter A-E 5.02, U.S. Public Land Survey Monument Record (3) (a) (b) (c) (d) (e) (f) (g) (h) (i). An additional sheet may be added if necessary to conform with said requirements.

(a) Corner location: Township 31 North

Range 6 East

Town SCOTT

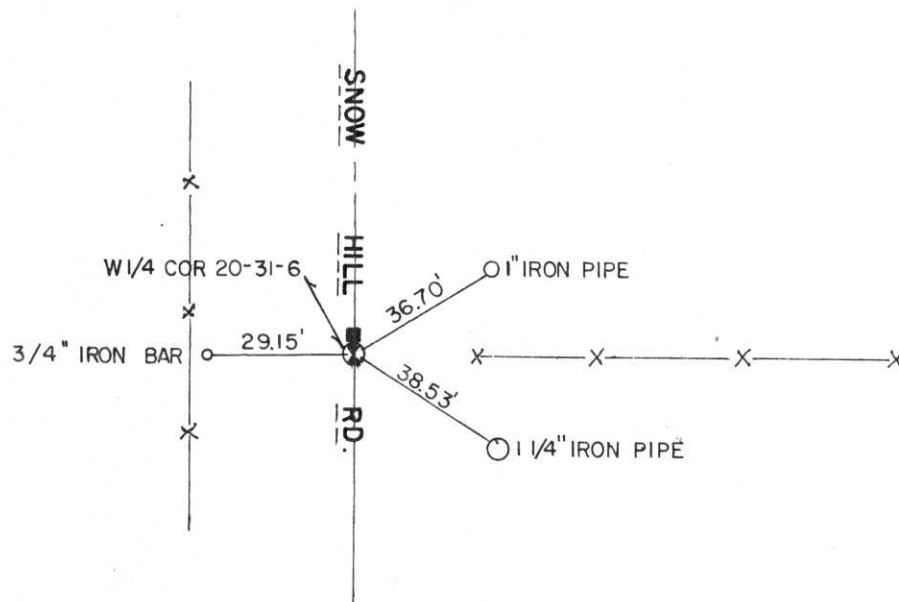
County LINCOLN



b) (f) (g) (h) Description of monument found at this corner and if it was accepted, state all evidence (material, testimonial, occupational, plats, records, other monuments) used as a basis for accepting. If not accepted or if nothing was found, state evidence used as basis for establishing location. If reestablished through lost corner proportionate methods, indicate all monuments, distances and directions used to establish.

FOUND A 6" X 6" GRANITE MONUMENT, STANDING UP, APPRX. 2' BELOW ROAD SURFACE. APPEARS TO BE LOWER PORTION OF STONE. DUG TO A DEPTH OF FOUR FEET AND OBSERVED AREA OF SOIL AT 2' LEVEL THAT WAS DIFFERET THAN SURROUNDING SOIL. REPLACED STONE WITH A BERNSTIEN MONUMENT. PLACED STONE ON NORTH SIDE OF MONUMENT.

c) (d) (e) Plan view of corner with ties to at least 4 witness monuments. If in disagreement with previously established corner, show the distances between the two corners and also indicate the ties to the disputed corner.



(i) I, EDWIN R. ABENDROTH

(type or print name) certify that the corner location on this record was determined by me or under my direction and control and that this U.S. Public Land Survey Monument Record is correct and complete to the best of my knowledge and belief.

*Edwin R. Abendroth*

7-29-87

Signature

Date



Index No. 0-5