

CERTIFIED LAND CORNER RESTORATION

Index No. M-23

State of Wisconsin }
County of LINCOLN } ss.

History of original corner establishment:

SEE REVERSE SIDE

I, CHARLES OFFERMAN, do hereby certify that on the 8TH day of NOVEMBER, 1979, I found evidence of the SOUTH 1/4 corner of SECTION 13 Township 31, North, Range 6 EAST, Fourth, Principal Meridian, as described hereon; and that from this evidence I established a new monument and accessories as described hereon to perpetuate the original location of this corner.

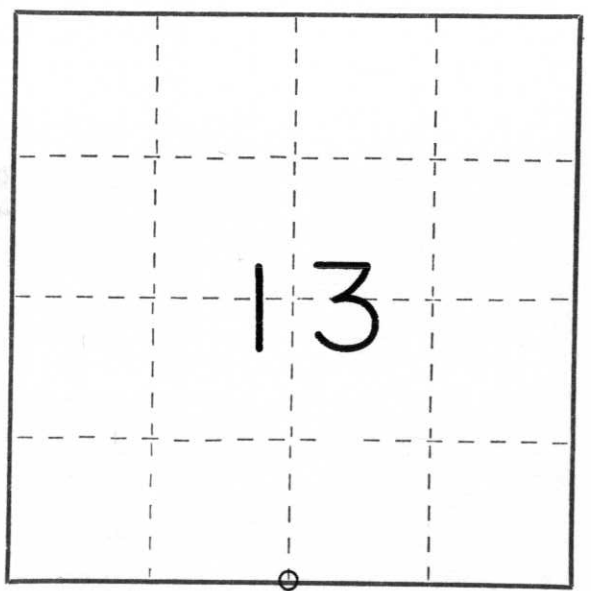
Description of corner evidence found:

SEE REVERSE SIDE

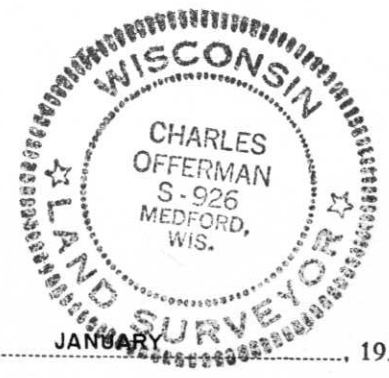
Resident witnesses:

Description of monument and accessories I established to perpetuate the original location of this corner.

SEE REVERSE SIDE



○ = Corner monument restored.



Dated at MEDFORD, Wis., this 2ND day of JANUARY, 1980.

Signature Charles Offerman Title REGISTERED LAND SURVEYOR Registration No. S. 926
(County Surveyor, Registered Land Surveyor, or other duly authorized official)

Office of Register of Deeds, County of _____, I hereby certify that the within instrument was filed in this office for record on the _____ day of _____, 19____ at _____ o'clock _____ M.

(Register of Deeds)

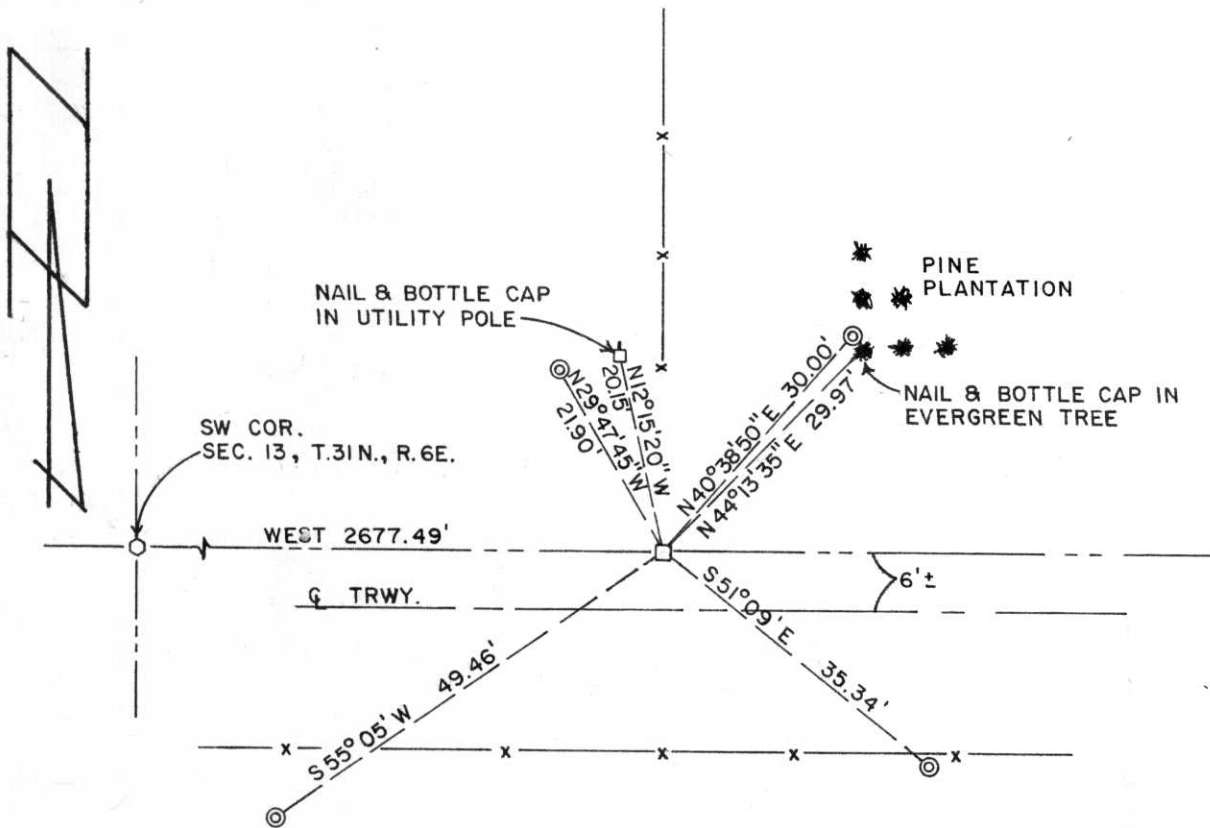
By _____ Deputy

**SOUTH 1/4 CORNER, SECTION 13, T.31N., R.6E.,
LINCOLN COUNTY, WISCONSIN.**

HISTORY OF ORIGINAL CORNER ESTABLISHMENT: This corner was re-established and a stone monument set in 1903, by Louis Kleinschmidt for the re-monumentation project of the Town of Scott.

DESCRIPTION OF CORNER EVIDENCE FOUND: By digging with a backhoe a 6"x6" granite monument was found in place.

DESCRIPTION OF MONUMENT AND ACCESSORIES I ESTABLISHED TO PERPETUATE THE LOCATION OF THIS CORNER:



- LEGEND
- ⊙ 2" x 30" IRON PIPE SET
 - 6" x 6" GRANITE MONUMENT FOUND
 - BERNTSEN MONUMENT
 - ⊞ POWER POLE
 - x-x-x EXISTING FENCE

RECEIVED AT LINCOLN COUNTY
COURTHOUSE THIS 8 DAY
OF Jan 1980
Pat Ruelke
TAX DESCRIPTION OFFICE