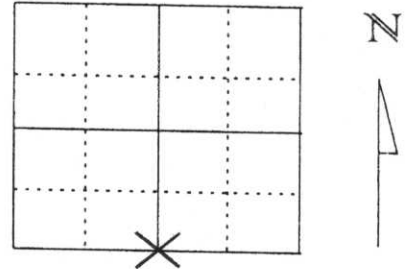


U.S. PUBLIC LAND SURVEY MONUMENT RECORD

Note: This form is intended and designed to fulfill all requirements of Wisconsin Administrative Code, Chapter A-E 5.02, U.S. Public Land Survey Monument Record (3) (a) (b) (c) (d) (e) (f) (g) (h) (l). An additional sheet may be added if necessary to conform with said requirements.

(a) Corner location: Township 31 North
 Range 6 East
 Town/City/Village SCOTT
 County Lincoln

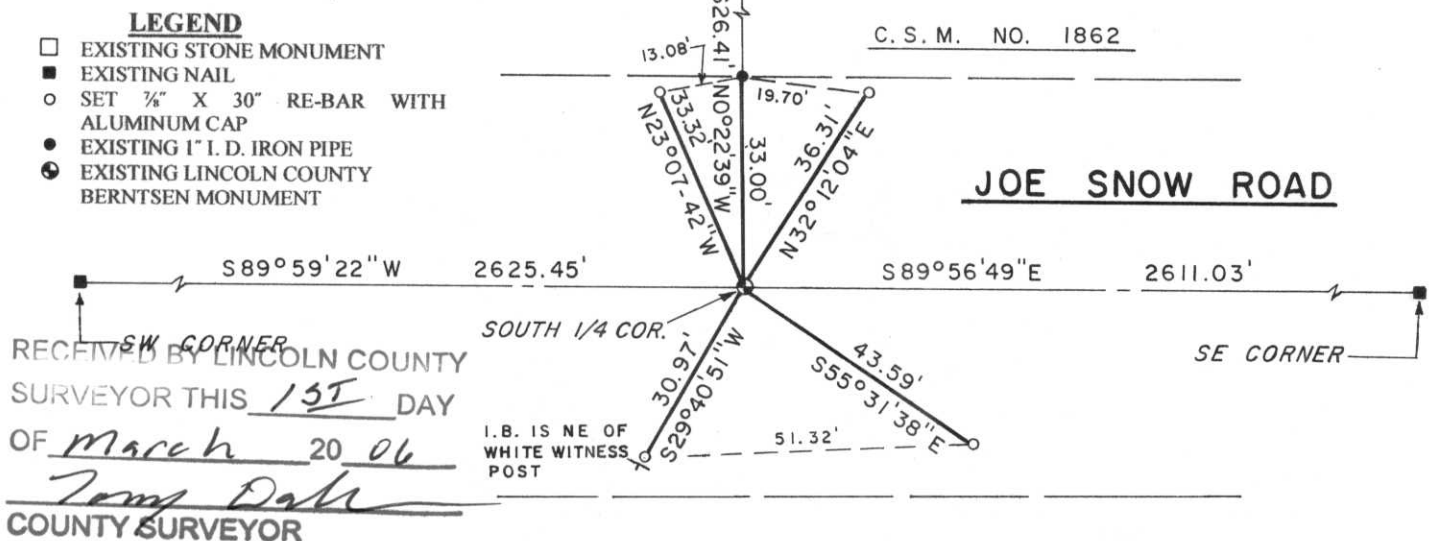


Section 14

(b) (f) (g) (h) Description of monument found at this corner and if it was accepted, state all evidence (material, testimonial, occupational, plats, records, other monuments) used as a basis for accepting. If not accepted or if nothing was found, state evidence used as basis for establishing location. If reestablished through lost corner proportionate methods, indicate all monuments, distances and directions used to establish.

IN MARCH OF 1852 F. S. ELLIS MARKED A 14" SUGAR FOR 1/4 POST. IN 1903 LOUIS KLEINSCHMIDT SET A STONE MONUMENT FOR SOUTH 1/4 CORNER. DURING THE CONSTRUCTION OF HIGHWAY Q THE CORNER WAS DUG FOR BY THE WISCONSIN DEPARTMENT OF TRANSPORTATION AND NO MONUMENT WAS FOUND. THE D.O.T. ESTABLISHED THE CORNER ON THE CENTERLINE OF JOE SNOW ROAD AND ON A FENCE TO THE SOUTH. IN SEPTEMBER OF 1976 E. ABENDROTH S-798 FOUND NO EVIDENCE OF CORNER AND SET A BERNTSEN MONUMENT AT THE LOCATION ESTABLISHED BY THE STATE. WE FOUND BERNTSEN MONUMENT AT BLACKTOP SURFACE WITH TWO POWER POLE TIES REMAINING AND RE-TIED AS SHOWN BELOW.

(c) (d) (e) Plan view of corner with ties to at least 4 witness monuments. If in disagreement with previously established corner, show the distances between the two corners and also indicate the ties to the disputed corner.



(l) I, DAVID J. GOSLIN
 (type or print name) certify that the corner location on this record was determined by me or under my direction and control and that this U.S. Public Land Survey Monument Record is correct and complete to the best of my knowledge and belief.

David J. Goslin
 Signature



2-27-06
 Date

Index No. M-19