

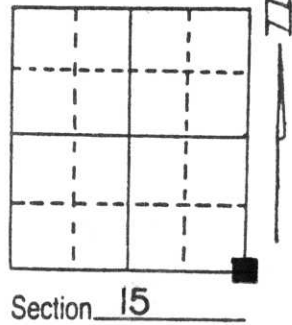
# U.S. PUBLIC LAND SURVEY MONUMENT RECORD

Note: This form is intended and designed to fulfill all requirements of Wisconsin Administrative Code, Chapter A-E 5.02, U.S. Public Land Survey Monument Record (3) (a) (b) (c) (d) (e) (f) (g) (h) (i). An additional sheet may be added if necessary to conform with said requirements.

(a) Corner location: Township 31 North  
 Range 6 East

Town/City/Village TN SCOTT

County LINCOLN

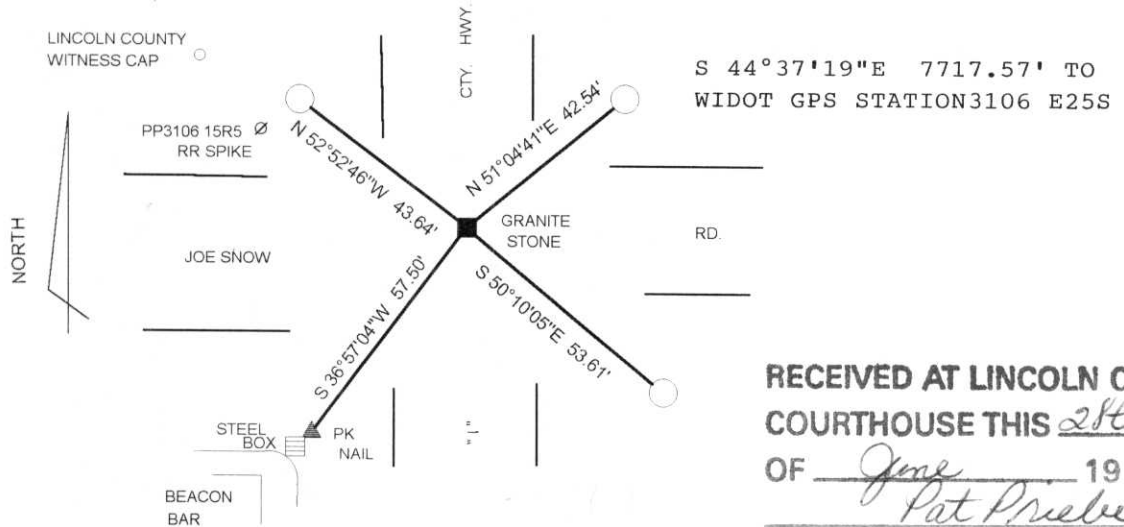


(b) (f) (g) (h) Description of monument found at this corner and if it was accepted, state all evidence (material, testimonial, occupational, plats, records, other monuments) used as a basis for accepting. If not accepted or if nothing was found, state evidence used as basis for establishing location. If reestablished through lost corner proportionate methods, indicate all monuments, distances and directions used to establish.

AUGUST 1992 DAVID OSTERBRINK FOUND A STONE 3" BELOW THE ROAD SURFACE. IN ADDITION FOUND EXISTING TIES DONE BY SHERIDAN SCHWARK IN APRIL OF 1978. OSTERBRINK SET A 1 1/2"x5" IRON ROD OVER THE STONE AND RETIED THE CORNER TO 6 WITNESS TIES.

I FOUND THE STONE AND ROD ±2' EAST OF C/L HWY "I" AT ITS INTERSECTION WITH JOE SNOW RD.

(c) (d) (e) Plan view of corner with ties to at least 4 witness monuments. If in disagreement with previously established corner, show the distances between the two corners and also indicate the ties to the disputed corner.



RECEIVED AT LINCOLN COUNTY  
 COURTHOUSE THIS 28th DAY  
 OF June 1996  
*Pat Priebe*  
 TAX DESCRIPTION OFFICE

(i) I, DAVID L. LEMKE  
 (type or print name) certify that the corner location on this record was determined by me or under my direction and control and that this U.S. Public Land Survey Monument Record is correct and complete to the best of my knowledge and belief.

*David L. Lemke*  
 Signature \_\_\_\_\_ Date JUN. 18 1996



Index No. M-17

# U.S. PUBLIC LAND SURVEY MONUMENT RECORD

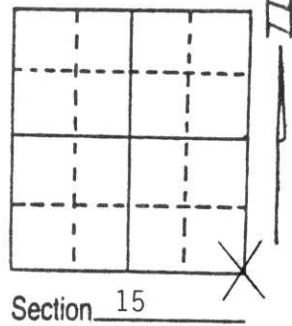
**Note:** This form is intended and designed to fulfill all requirements of Wisconsin Administrative Code, Chapter A-E 5.02, U.S. Public Land Survey Monument Record (3) (a) (b) (c) (d) (e) (f) (g) (h) (i). An additional sheet may be added if necessary to conform with said requirements.

(a) Corner location: Township 31 North

Range 6 East

Town/City/Village Scott

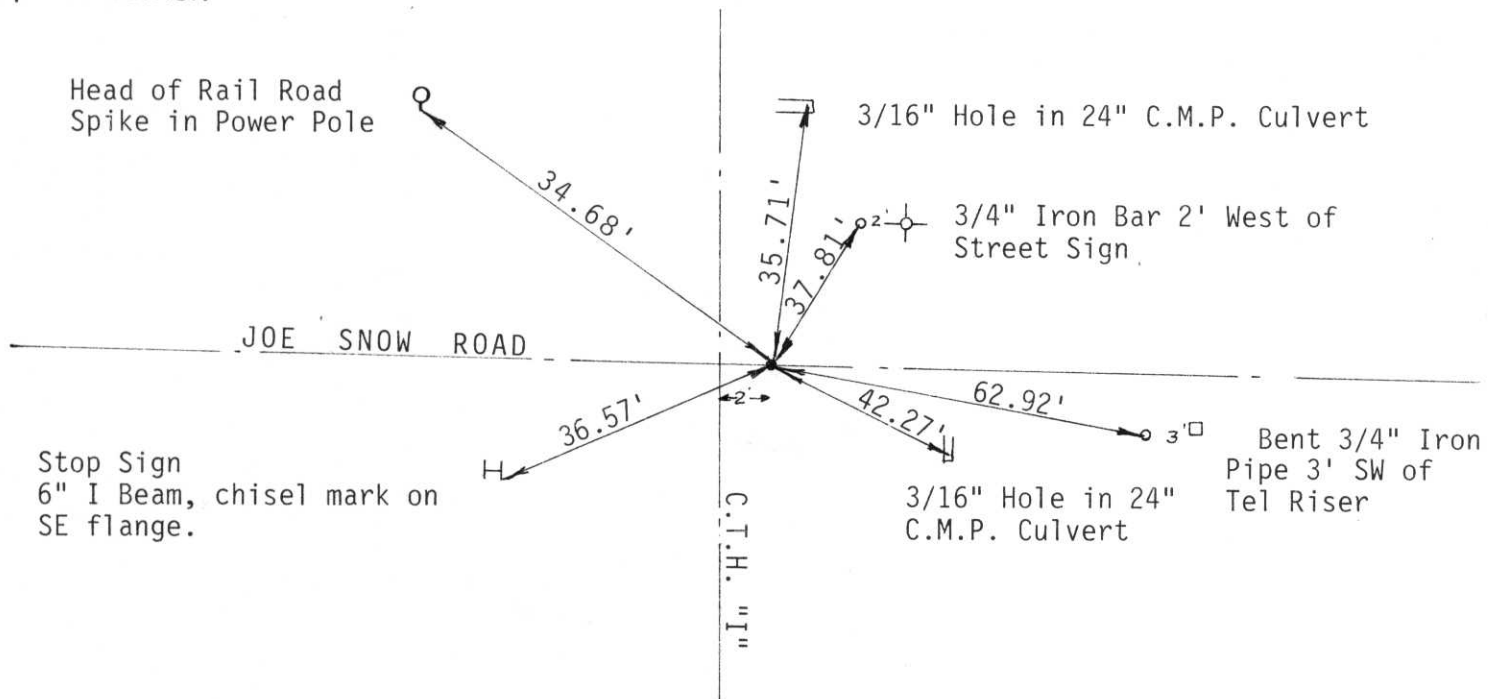
County Lincoln



(b) (f) (g) (h) Description of monument found at this corner and if it was accepted, state all evidence (material, testimonial, occupational, plats, records, other monuments) used as a basis for accepting. If not accepted or if nothing was found, state evidence used as basis for establishing location. If reestablished through lost corner proportionate methods, indicate all monuments, distances and directions used to establish.

Corner found and tied by Schwark in 4-28-78. Existing ties did not cross, and I wasnt sure if they were the same ties originally set. Magnetic reading did not match area of ties. Dug for corner by hand, found rail road spike under 3" Black top, dug down to top of stone, retied corner. Set 1 1/2"x5" Iron Rod over top of Stone. Patched hole with black top.

(c) (d) (e) Plan view of corner with ties to at least 4 witness monuments. If in disagreement with previously established corner, show the distances between the two corners and also indicate the ties to the disputed corner.



(i) I, David L. Osterbrink RLS No. S-2014  
 (type or print name) certify that the corner location on this record was determined by me or under my direction and control and that this U.S. Public Land Survey Monument Record is correct and complete to the best of my knowledge and belief.

David L. Osterbrink 8-12-92  
 Signature Date



Index No. M-17

CERTIFIED LAND CORNER RESTORATION

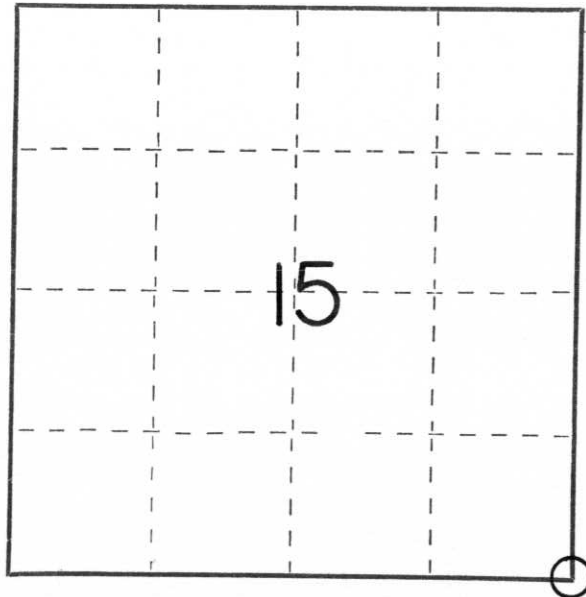
Index No. M-17

State of Wisconsin }  
County of Lincoln } ss.

I Sheridan D. Schwark, do hereby certify that on the 15th day of February, 1978, I found evidence of the Southeast corner of Section 15 Township 31, North, Range 6 East, Fourth, Principal Meridian, as described hereon; and that from this evidence I established a new monument and accessories as described hereon to perpetuate the original location of this corner.

Resident witnesses:

.....  
.....  
.....



○ = Corner monument restored.

History of original corner establishment:

Date: March, 1852  
Surveyor: A.G. & F.S. Ellis  
Monument: Wood post  
Witnesses: 13" Birch N42°E, 7 links  
11" Birch N50°W, 25 links

Description of corner evidence found:

We found a 5" x 5" stone monument with a drill hole 6" below the road pavement. The stone was the same type as we've found in other areas in the Town of Scott. The stones were set in 1903 by Louis Kleinschmidt. His map is on record in the Register of Deeds office.

Description of monument and accessories I established to perpetuate the original location of this corner.

We set a 1 1/4" iron rod on the North side of the stone.  
We set the following witness monuments to the stone monument:  
1" x 30" iron pipe set 3' Southwest of telephone junction box No. 2425 bearing S57°E, 63.28'  
Southeast corner of steel stop sign post bearing S45°W, 36.52'  
Face of Railroad spike in power pole No. 3106-15R5 bearing N41°W, 34.76'  
1" x 30" iron pipe set 2' North of Road sign bearing N63°E, 45.42'

Dated at Merrill, Wis., this 28th day of April, 1978.

Signature Sheridan D. Schwark Title Registered Land Surveyor Registration No. S-1205  
(County Surveyor, Registered Land Surveyor, or other duly authorized official)

Office of Register of Deeds, County of....., I hereby certify that the within instrument was filed in this office for record on the.....day of....., 19..... at.....o'clock..... M.

.....  
(Register of Deeds)

By.....Deputy