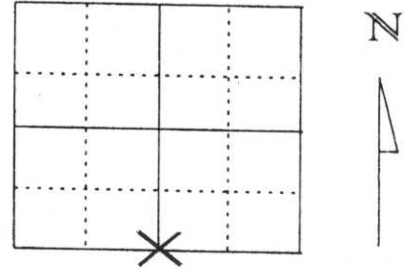


# U.S. PUBLIC LAND SURVEY MONUMENT RECORD

Note: This form is intended and designed to fulfill all requirements of Wisconsin Administrative Code, Chapter A-E 5.02, U.S. Public Land Survey Monument Record (3) (a) (b) (c) (d) (e) (f) (g) (h) (l). An additional sheet may be added if necessary to conform with said requirements.

(a) Corner location: Township 31 North  
 Range 6 East  
 Town/City/Village SCOTT  
 County Lincoln



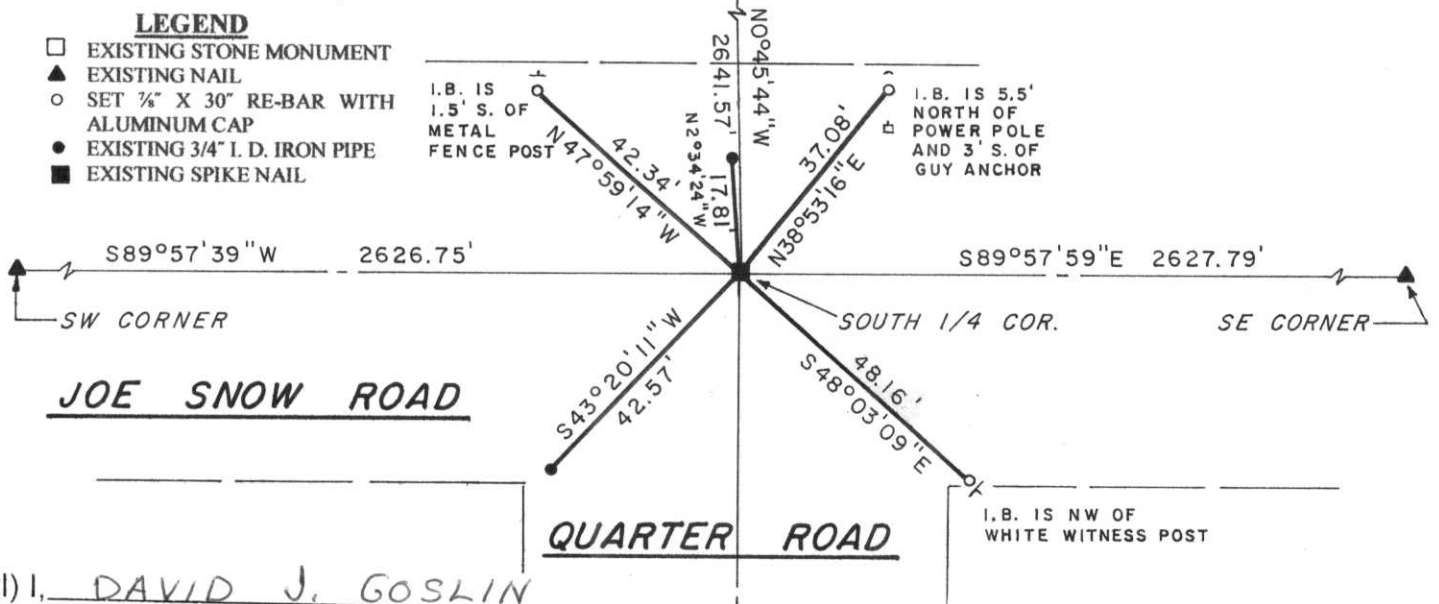
Section 15

(b) (f) (g) (h) Description of monument found at this corner and if it was accepted, state all evidence (material, testimonial, occupational, plats, records, other monuments) used as a basis for accepting. If not accepted or if nothing was found, state evidence used as basis for establishing location. If reestablished through lost corner proportionate methods, indicate all monuments, distances and directions used to establish.

IN MARCH OF 1852 F. S. ELLIS SET ¼ POST WITH THE FOLLOWING TIES: HEMLOCK 9 S17°E, 49 LINKS AND BIRCH 8 N19°W, 32 LINKS. IN 1903 LOUIS KLEINSCHMIDT SET A STONE MONUMENT FOR SOUTH ¼ CORNER. IN APRIL OF 1978 S. SCHWARK S-1205 DUG FOR CORNER AND FOUND A GRANITE MONUMENT WITH A BROKEN TOP. THEY REPLACED THE BROKEN GRANITE WITH A LINCOLN COUNTY BERNTSEN MONUMENT AND TIED OUT. WE FOUND A SPIKE NAIL IN A HOLE IN BLACKTOP AT CORNER LOCATION WITH TWO EXISTING TIES REMAINING. EXISTING SPIKE NAIL CHECKED RECORD TIE DISTANCES. WE TOOK SPIKE NAIL OUT AND HAND DUG FOR BERNTSEN MONUMENT BUT FOUND THE TOP HAD DETERIORATED. WE RE-SET SPIKE NAIL AND RE-TIED AS SHOWN BELOW.

RECEIVED BY LINCOLN COUNTY  
 SURVEYOR THIS 15<sup>TH</sup> DAY  
 OF March 20 06  
Tony Dahl  
 COUNTY SURVEYOR

(c) (d) (e) Plan view of corner with ties to at least 4 witness monuments. If in disagreement with previously established corner, show the distances between the two corners and also indicate the ties to the disputed corner.



(l) I, DAVID J. GOSLIN  
 (type or print name) certify that the corner location on this record was determined by me or under my direction and control and that this U.S. Public Land Survey Monument Record is correct and complete to the best of my knowledge and belief.

David J. Goslin Signature  
2-27-06 Date



Index No. M-15