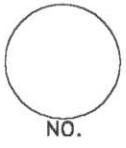


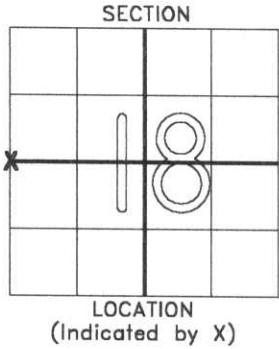
LINCOLN COUNTY U.S. PUBLIC LAND SURVEY MONUMENT LOCATION RECORD

SECTION 18
TOWNSHIP 31
RANGE 7
SCOTT
CITY, TOWN, VILLAGE



LANDMARK BENCHMARK
CORNER IDENTITY: WEST 1/4 PK
STATE PLANE COORDINATE N: _____
ZONE: _____ E: _____
ELEVATION-(FEET): _____ DATUM: _____
THETA ANGLE: _____ WEATHER: _____
DATE OF SURVEY: 11/10/99 TEMPERATURE: 20* F
SURVEY PARTY: WADZINSKI, OBREMSKI

FOUND
SET
RE-SET
RE-TIED



BASIS FOR MONUMENT LOCATION:

(DESCRIBE METHOD OF SURVEY AND CORNER AUTHENTICATION)

LOCATED PK BY USING 2 REMAINING TIES PER TIE SHEET
6/3/76. FOUND DEPRESSION AREA WHERE THIRD TIE,
AN ELECTRIC POLE WAS REMOVED.
AGREED WITH RIO GRANDE SUBDIVISION USING THIS PK.
COMPARED AND AGREED WITH GARY KRUEGER INFORMATION
FROM GEORGE SCHNEIDER SUBDIVISION.
TIED INTO C1/4 CORNER AND SW CORNER AS RETIED
BY BOB FERGOT 1/25/99.
SET OUT FOUR IRON BARS WITH LINCOLN COUNTY
CAPS AND ONE SURVEY MONUMENT WITNESS POST.



SEAL
CERTIFIED CORRECT:

Gene J. Wadzinski

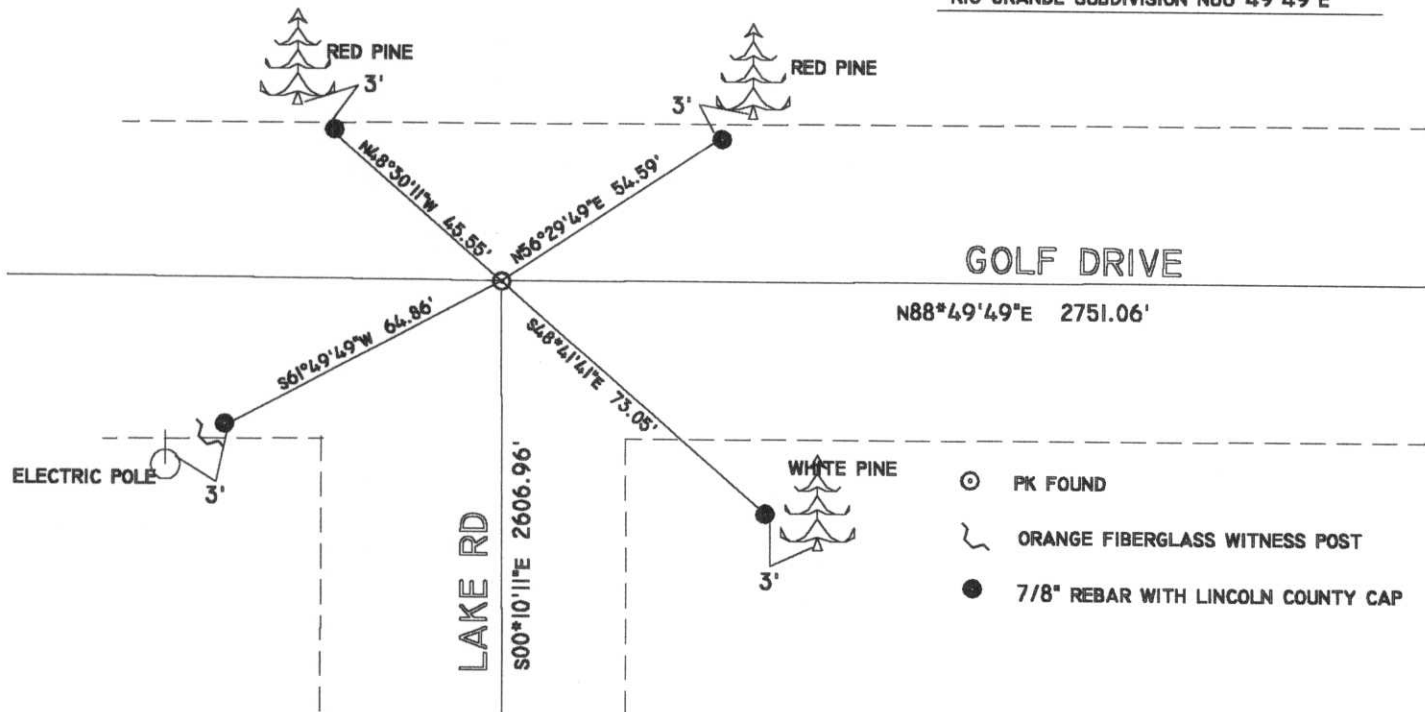
GENE J. WADZINSKI
Registered Land Surveyor

DATE: 12/06/99

TIE SKETCH:

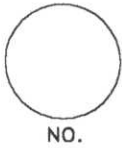
SHOW MINIMUM OF FOUR(4) HORIZONTAL TIE DISTANCES TO FIXED WITNESS MONUMENTS.
DESCRIBE ALL MONUMENTS FOUND OR SET. CORRECT ALL DISTANCES SHOWN TO STANDARD
TEMPERATURE OF 68° F.

BEARINGS REFERENCED TO SOUTH LINE NW 1/4
RIO GRANDE SUBDIVISION N88°49'49"E



- ⊙ PK FOUND
- ⌋ ORANGE FIBERGLASS WITNESS POST
- 7/8" REBAR WITH LINCOLN COUNTY CAP

RECEIVED AT LINCOLN COUNTY
COURTHOUSE THIS 28th DAY
OF Dec 19 99
Pat Probe
LAND INFORMATION OFFICE



K-1

SURVEY MONUMENT LOCATION RECORD

LANDMARK BENCHMARK

CORNER IDENTITY W 1/4
 DATE OF SURVEY JUNE 3, 1976
 WEATHER CLEAR, CALM
 TEMPERATURE 80°
 SURVEY PARTY D. TLUSTY M. HENRICHS

FOUND
 SET
 RE-SET
 RE-TIED

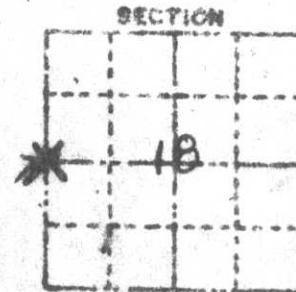
SECTION 11

TOWNSHIP 31 N

RANGE 7E

SCOTT PAE RIVER
 (CITY, VILLAGE, TOWN)

LINCOLN CO.



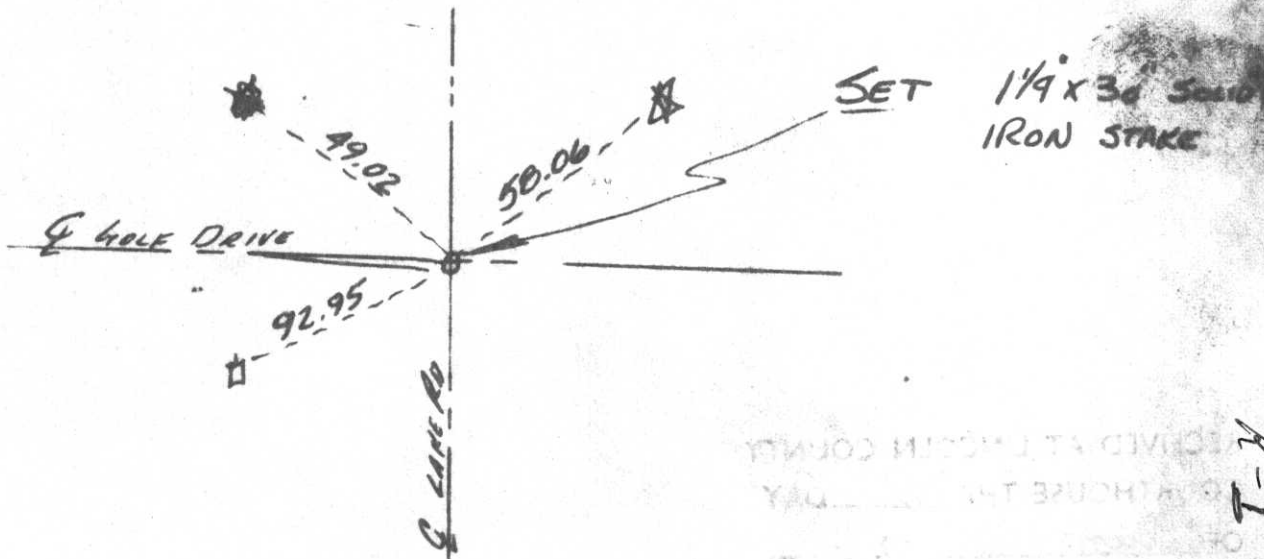
SECTION
 LOCATION
 (INDICATED BY X)



BASIS FOR MONUMENT LOCATION
 DESCRIBE METHOD OF SURVEY AND CORNER AUTHENTICATION

*RESET CORNER FROM PARKLANE MANOR 1ST ADD.
 SEE DOEPHE SURVEY*

TIE SKETCH SHOW HORIZONTAL TIE DISTANCES TO FIXED WITNESS MONUMENTS. DESCRIBE ALL MONUMENTS FOUND OR SET



RECEIVED AT TOWN CLERK'S OFFICE
 MAY 19 1976
 TOWN OF SCOTT
 LINCOLN COUNTY, MISSOURI
 TAX & OPERATIONS DEPT.

SURVEY MONUMENT LOCATION REPORT

X LANDMARK RES. MARK
TOWER NO. 10 W/4
DATE OF SURVEY JUNE 3, 1976
WEATHER CLEAR, CALM
TEMPERATURE 80°
SURVEY PARTY D. TLUSTY M. HENRICHS

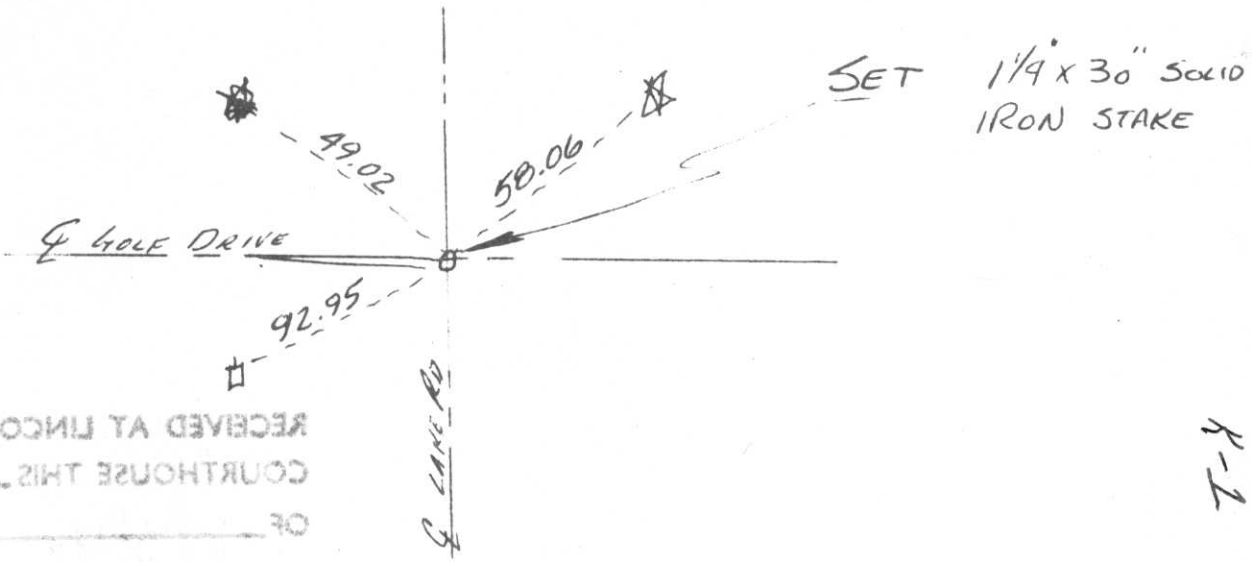
31 N
7E
SCOTT, PINE RIVER
LINCOLN CO.

X 18

BASIS FOR MONUMENT LOCATION

RESET CORNER FROM PARKLANE MANOR 1ST ADD.
SEE DOEPKE SURVEY

TIP SKETCH



RECEIVED AT LINCOLN COUNTY
COURTHOUSE THIS DAY
OF
TAX DESCRIPTION OFFICE

K-1