

# U.S. PUBLIC LAND SURVEY MONUMENT RECORD

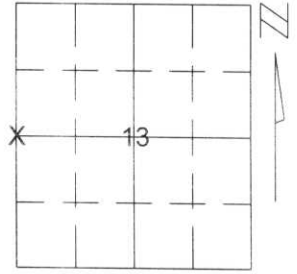
Note: This form is intended and designed to fulfill all requirements of Wisconsin Administrative Code, Chapter A-E 5.02, U.S. Public Land Survey Monument Record (3)(a)(b)(c)(d)(e)(f)(g)(h)(i). An additional sheet may be added if necessary to conform with said requirements.

(a) Corner location: Township 31 North

Range 6 East

Town/City/Village MERRILL

County LINCOLN



Section 13

(b)(f)(g)(h) Description of monument found at this corner and if it was accepted, state all evidence (material, testimonial, occupational, plats, records, other monuments) used as a basis for accepting. If not accepted or if nothing was found, state evidence used as basis for establishing location. If reestablished through lost corner proportionate methods, indicate all monuments, distances and directions used to establish.

I FOUND A SANDSTONE MONUMENT THAT HAD BEEN CALLED OUT ON OLDER SURVEYS IN SECTION 13. THIS STONE FELL IN LINE WITH FOUND MONUMENTS ALONG THE WEST LINE OF THE NORTHWEST 1/4 OF SECTION 13. I ACCEPTED THE STONE AS THE BEST AVAILABLE EVIDENCE OF THE CORNER'S ORIGINAL LOCATION.

RECEIVED AT LINCOLN COUNTY  
COURTHOUSE THIS 23<sup>RD</sup> DAY  
OF July 20 01  
Tony Dallen  
LAND INFORMATION OFFICE

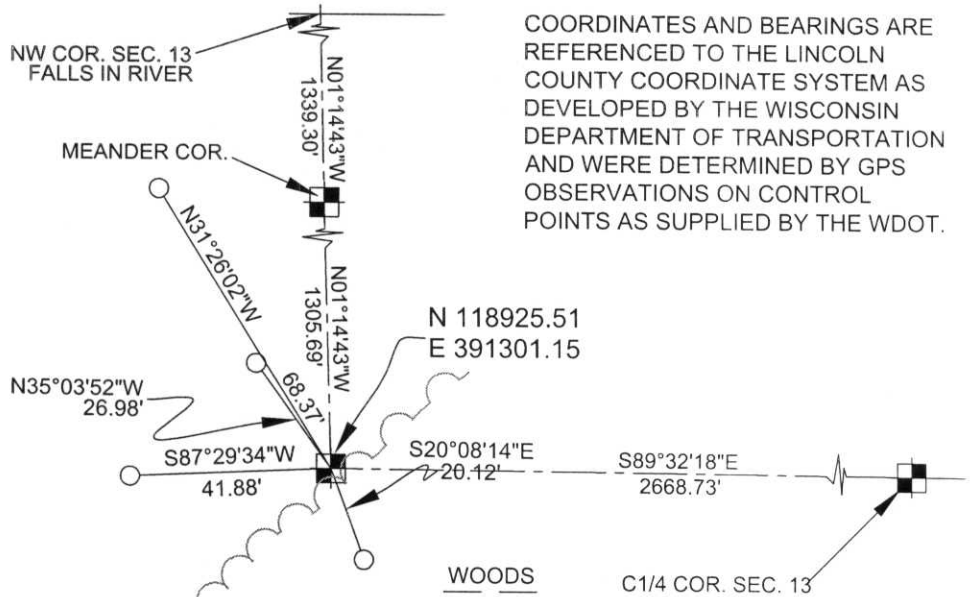
(c)(d)(e) Plan view of corner with ties to at least 4 witness monuments. If in disagreement with previously established corner, show the distances between the two corners and also indicate the ties to the disputed corner.



○ - 3/4" X 30" RE-BAR SET W ALUM. CAP

■ - SECTION CORNER

NOTE:  
- FOUND 8" X 8" SANDSTONE MONUMENT



COORDINATES AND BEARINGS ARE REFERENCED TO THE LINCOLN COUNTY COORDINATE SYSTEM AS DEVELOPED BY THE WISCONSIN DEPARTMENT OF TRANSPORTATION AND WERE DETERMINED BY GPS OBSERVATIONS ON CONTROL POINTS AS SUPPLIED BY THE WDOT.

(i) I, David A. Renaud, WI R.L.S. S-2142  
(type or print name) certify that the corner location on this record was determined by me or under my direction and control and that this U.S. Public Land Survey Monument Record is correct and complete to the best of my knowledge and belief.



Index No. K-21

David A. Renaud 6/25/01  
Signature Date

# U.S. PUBLIC LAND SURVEY MONUMENT RECORD

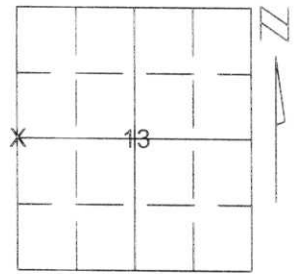
Note: This form is intended and designed to fulfill all requirements of Wisconsin Administrative Code, Chapter A-E 5.02, U.S. Public Land Survey Monument Record (3)(a)(b)(c)(d)(e)(f)(g)(h)(i). An additional sheet may be added if necessary to conform with said requirements.

(a) Corner location: Township 31 North

Range 6 East

Town/City/Village MERRILL

County LINCOLN



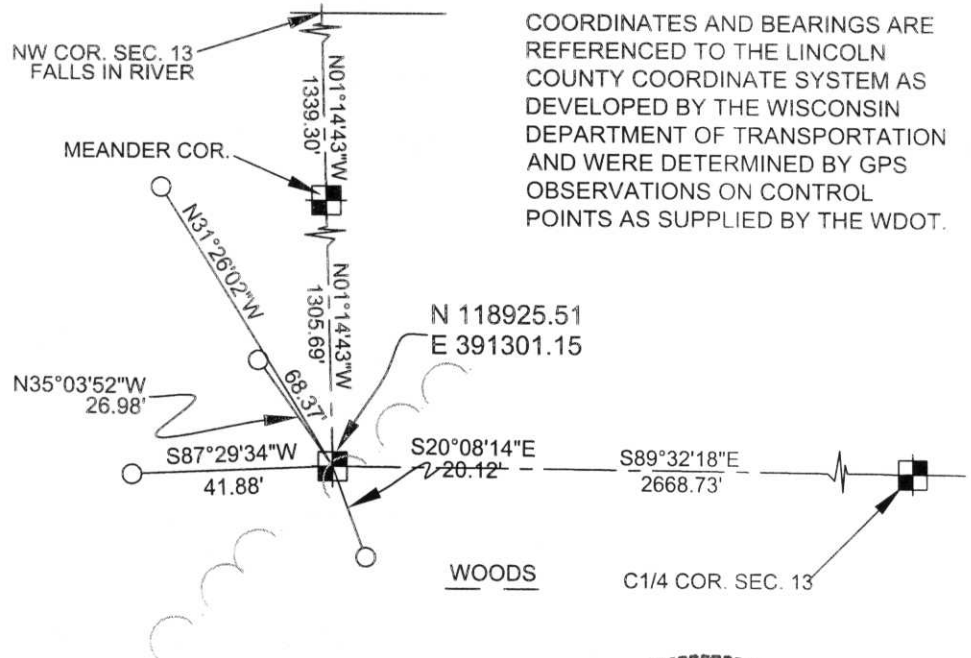
Section 13

(b)(f)(g)(h) Description of monument found at this corner and if it was accepted, state all evidence (material, testimonial, occupational, plats, records, other monuments) used as a basis for accepting. If not accepted or if nothing was found, state evidence used as basis for establishing location. If reestablished through lost corner proportionate methods, indicate all monuments, distances and directions used to establish.

I FOUND A SANDSTONE MONUMENT THAT HAD BEEN CALLED OUT ON OLDER SURVEYS IN SECTION 13. THIS STONE FELL IN LINE WITH FOUND MONUMENTS ALONG THE WEST LINE OF THE NORTHWEST 1/4 OF SECTION 13. I ACCEPTED THE STONE AS THE BEST AVAILABLE EVIDENCE OF THE CORNER'S ORIGINAL LOCATION.

RECEIVED AT LINCOLN COUNTY  
COURTHOUSE THIS 25<sup>TH</sup> DAY  
OF June 20 01  
Tony Dehn  
LAND INFORMATION OFFICE

(c)(d)(e) Plan view of corner with ties to at least 4 witness monuments. If in disagreement with previously established corner, show the distances between the two corners and also indicate the ties to the disputed corner.



(i) I, David A. Renaud, WI R.L.S. S-2142  
(type or print name) certify that the corner location on this record was determined by me or under my direction and control and that this U.S. Public Land Survey Monument Record is correct and complete to the best of my knowledge and belief.



Index No. K-21

David A. Renaud 6-7-01  
Signature Date

CERTIFIED LAND CORNER RESTORATION

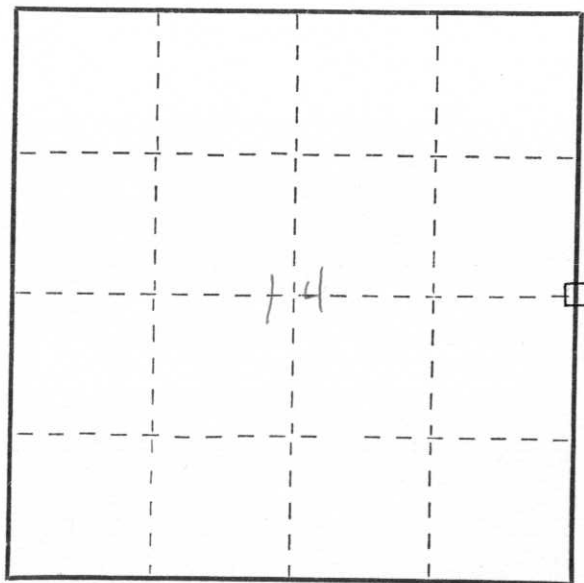
Index No. K-21

State of Wisconsin }  
County of Lincoln } ss.

I Edwin R. Abendroth, do hereby certify that on the 24th day of Sept., 1976, I found evidence of the East 1/4 corner of Section 14 Township 31, North, Range 6 East, Fourth, Principal Meridian, as described hereon; and that from this evidence I established a new monument and accessories as described hereon to perpetuate the original location of this corner.

Resident witnesses:

Perry M. Totsch  
\_\_\_\_\_  
\_\_\_\_\_  
\_\_\_\_\_



○ = Corner monument restored.

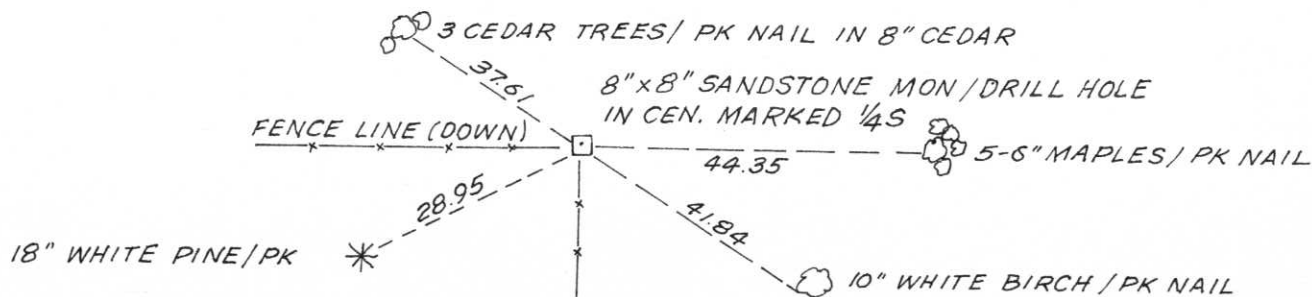
History of original corner establishment:

A wooden post was established at the corner location by the original Gov't. Survey. No evidence of the original corner was found. A stone monument was set during a remonumentation program.

Description of corner evidence found:

A stone monument 8" square of undetermined length was found with a drill hole in the center of the stone. The side was marked 1/4 S. The stone was at the intersection of fence lines.

Description of monument and accessories I established to perpetuate the original location of this corner.



Dated at Wausau, Wis., this 24th day of September, 19 76.

Signature \_\_\_\_\_ Title Reg. Land Surveyor Registration No. S-798  
(County Surveyor, Registered Land Surveyor, or other duly authorized official)

Office of Register of Deeds, County of \_\_\_\_\_, I hereby certify that the within instrument was filed in this office for record on the \_\_\_\_\_ day of \_\_\_\_\_, 19 \_\_\_\_\_ at \_\_\_\_\_ o'clock \_\_\_\_\_ M.

\_\_\_\_\_  
(Register of Deeds)

By \_\_\_\_\_ Deputy