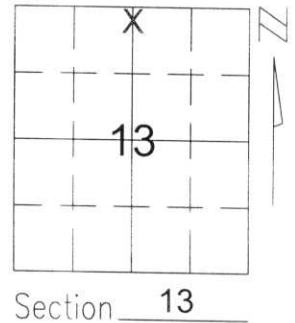


U.S. PUBLIC LAND SURVEY MONUMENT RECORD

Note: This form is intended and designed to fulfill all requirements of Wisconsin Administrative Code, Chapter A-E 5.02, U.S. Public Land Survey Monument Record (3)(a)(b)(c)(d)(e)(f)(g)(h)(i). An additional sheet may be added if necessary to conform with said requirements.

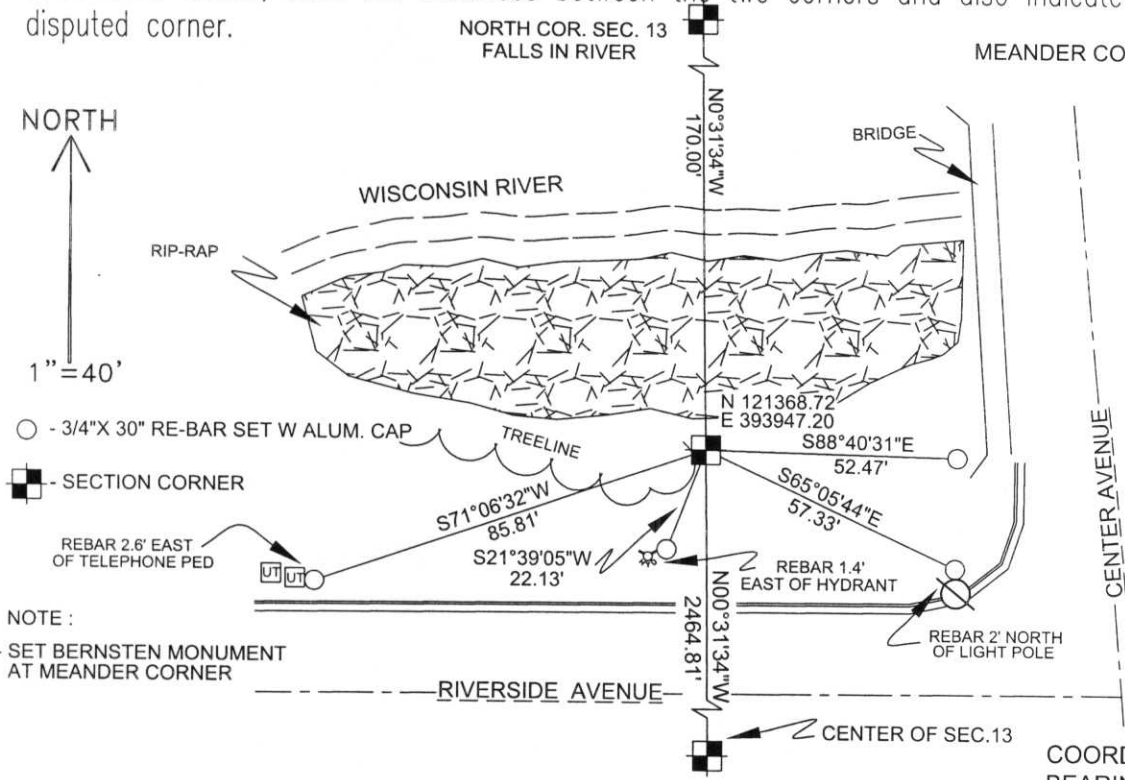
(a) Corner location: Township 31 North
 Range 6 East
 Town/City/Village MERRILL
 County LINCOLN



(b)(f)(g)(h) Description of monument found at this corner and if it was accepted, state all evidence (material, testimonial, occupational, plats, records, other monuments) used as a basis for accepting. If not accepted or if nothing was found, state evidence used as basis for establishing location. If reestablished through lost corner proportionate methods, indicate all monuments, distances and directions used to establish.

THE NORTH 1/4 CORNER OF SECTION 13 FALLS IN THE WISCONSIN RIVER. I MEASURED EXTENSIVELY THROUGHOUT SECTION 12 TO THE NORTH. THE CORNERS ALONG THE NORTH LINE OF THIS SECTION ARE IN AND ARE ACCEPTED. THE MAIN EVIDENCE LEFT OF THE ORIGINAL LOCATION OF THIS CORNER ARE THE CENTERLINES OF STREETS THROUGHOUT THIS SECTION WHICH GENERALLY FALL ALONG 1/16TH LINES. I FOUND THAT THE LOCATION OF THESE CENTERLINES FIT VERY WELL TO EACH OTHER AS WELL AS THE ORIGINAL GOVERNMENT SURVEY OF SECTION 12. I ALSO MEASURED TO A FOUND STONE AT THE ACCEPTED CENTER OF SECTION 13 TO THE SOUTH, AS WELL AS THE CENTERLINE OF O'DAY STREET IN SECTION 13. O'DAY STREET FALLS ALONG THE SOUTH LINE OF THE NORTH 1/2 OF GOVERNMENT LOT 4 (NW1/4-NE1/4) OF SECTION 13. I ACCEPTED THE THE CENTERLINE OF CENTER AVENUE FROM THE NORTH AS THE EAST & WEST LOCATION OF THE CORNER. I HELD THE FOUND STONE AT THE CENTER OF SECTION 13 AND THE CENTERLINE OF O'DAY STREET AND DOUBLED THE DISTANCE BETWEEN THE TWO TO DETERMINE THE NORTH & SOUTH LOCATION OF THE SOUTH 1/4 CORNER OF SECTION 12. I THEN SET A MEANDER CORNER TO THE NORTH 1/4 CORNER AS SHOWN BELOW.

(c)(d)(e) Plan view of corner with ties to at least 4 witness monuments. If in disagreement with previously established corner, show the distances between the two corners and also indicate the ties to the disputed corner.



RECEIVED AT LINCOLN COUNTY
 COURTHOUSE THIS 23RD DAY
 OF July 2001
Zemy Dasher
 LAND INFORMATION OFFICE

(i) I, DAVID A RENAUD
 (type or print name) certify that the corner location on this record was determined by me or under my direction and control and that this U.S. Public Land Survey Monument Record is correct and complete to the best of my knowledge and belief.

David Renaud 6/25/01
 Signature Date

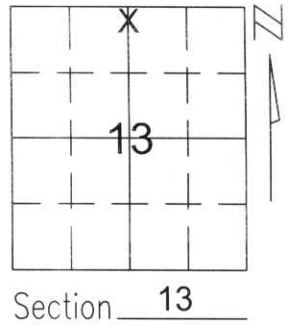
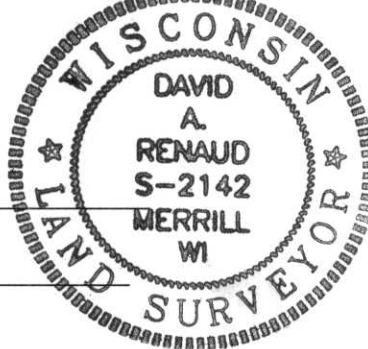
COORDINATES AND BEARINGS ARE REFERENCED TO THE LINCOLN COUNTY COORDINATE SYSTEM AS DEVELOPED BY THE WISCONSIN DEPARTMENT OF TRANSPORTATION AND WERE DETERMINED BY GPS OBSERVATIONS ON CONTROL POINTS AS SUPPLIED BY THE WDOT.

Index No. IS-23

U.S. PUBLIC LAND SURVEY MONUMENT RECORD

Note: This form is intended and designed to fulfill all requirements of Wisconsin Administrative Code, Chapter A-E 5.02, U.S. Public Land Survey Monument Record (3)(a)(b)(c)(d)(e)(f)(g)(h)(i). An additional sheet may be added if necessary to conform with said requirements.

(a) Corner location: Township 31 North
 Range 6 East
 Town/City/Village MERRILL
 County LINCOLN

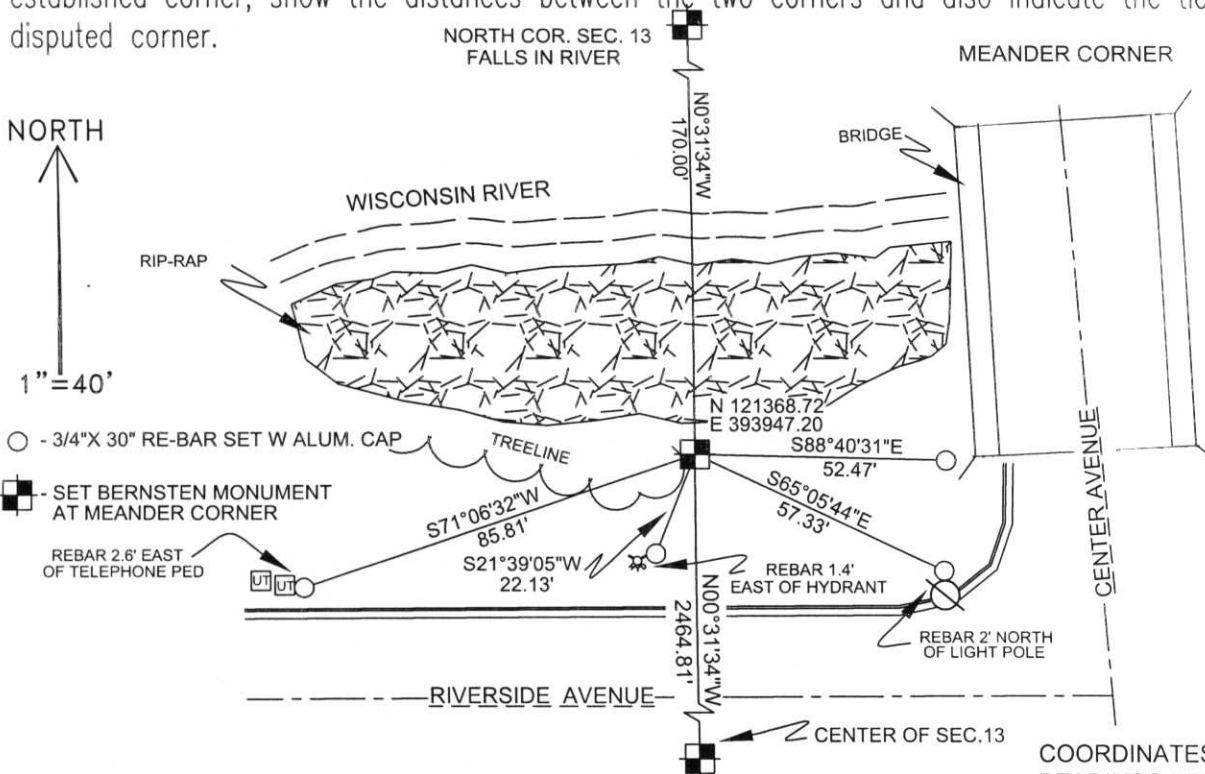


Section 13

(b)(f)(g)(h) Description of monument found at this corner and if it was accepted, state all evidence (material, testimonial, occupational, plats, records, other monuments) used as a basis for accepting. If not accepted or if nothing was found, state evidence used as basis for establishing location. If reestablished through lost corner proportionate methods, indicate all monuments, distances and directions used to establish.

THE NORTH 1/4 CORNER OF SECTION 13 FALLS IN THE WISCONSIN RIVER. I MEASURED EXTENSIVELY THROUGHOUT SECTION 12 TO THE NORTH. THE CORNERS ALONG THE NORTH LINE OF THIS SECTION ARE IN AND ARE ACCEPTED. THE MAIN EVIDENCE LEFT OF THE ORIGINAL LOCATION OF THIS CORNER ARE THE CENTERLINES OF STREETS THROUGHOUT THIS SECTION WHICH GENERALLY FALL ALONG 1/16TH LINES. I FOUND THAT THE LOCATION OF THESE CENTERLINES FIT VERY WELL TO EACH OTHER AS WELL AS THE ORIGINAL GOVERNMENT SURVEY OF SECTION 12. I ALSO MEASURED TO A FOUND STONE AT THE ACCEPTED CENTER OF SECTION 13 TO THE SOUTH, AS WELL AS THE CENTERLINE OF O'DAY STREET IN SECTION 13. O'DAY STREET FALLS ALONG THE SOUTH LINE OF THE NORTH 1/2 OF GOVERNMENT LOT 4 (NW1/4-NE1/4) OF SECTION 13. I ACCEPTED THE THE CENTERLINE OF CENTER AVENUE FROM THE NORTH AS THE EAST & WEST LOCATION OF THE CORNER. I HELD THE FOUND STONE AT THE CENTER OF SECTION 13 AND THE CENTERLINE OF O'DAY STREET AND DOUBLED THE DISTANCE BETWEEN THE TWO TO DETERMINE THE NORTH & SOUTH LOCATION OF THE SOUTH 1/4 CORNER OF SECTION 12. I THEN SET A MEANDER CORNER TO THE NORTH 1/4 CORNER AS SHOWN BELOW.

(c)(d)(e) Plan view of corner with ties to at least 4 witness monuments. If in disagreement with previously established corner, show the distances between the two corners and also indicate the ties to the disputed corner.



RECEIVED AT LINCOLN COUNTY
 COURTHOUSE THIS 25TH DAY
 OF June 20 01
 Tony Dalman
 LAND INFORMATION OFFICE

(i) I, DAVID A RENAUD
 (type or print name) certify that the corner location on this record was determined by me or under my direction and control and that this U.S. Public Land Survey Monument Record is correct and complete to the best of my knowledge and belief.

David A. Renaud 6/18/01
 Signature Date

COORDINATES AND BEARINGS ARE REFERENCED TO THE LINCOLN COUNTY COORDINATE SYSTEM AS DEVELOPED BY THE WISCONSIN DEPARTMENT OF TRANSPORTATION AND WERE DETERMINED BY GPS OBSERVATIONS ON CONTROL POINTS AS SUPPLIED BY THE WDOT.

Index No. I:5, 23