



Stock No. 26273

# U.S. PUBLIC LAND SURVEY MONUMENT RECORD

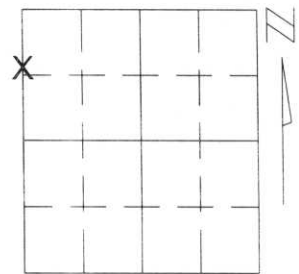
Note: This form is intended and designed to fulfill all requirements of Wisconsin Administrative Code, Chapter A-E 5.02, U.S. Public Land Survey Monument Record (3)(a)(b)(c)(d)(e)(f)(g)(h)(i). An additional sheet may be added if necessary to conform with said requirements.

(a) Corner location: Township 31 North

Range 6 East

Town/City/Village MERRILL

County LINCOLN



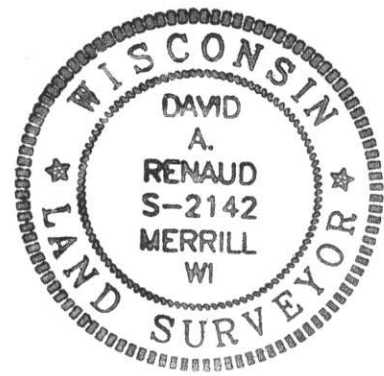
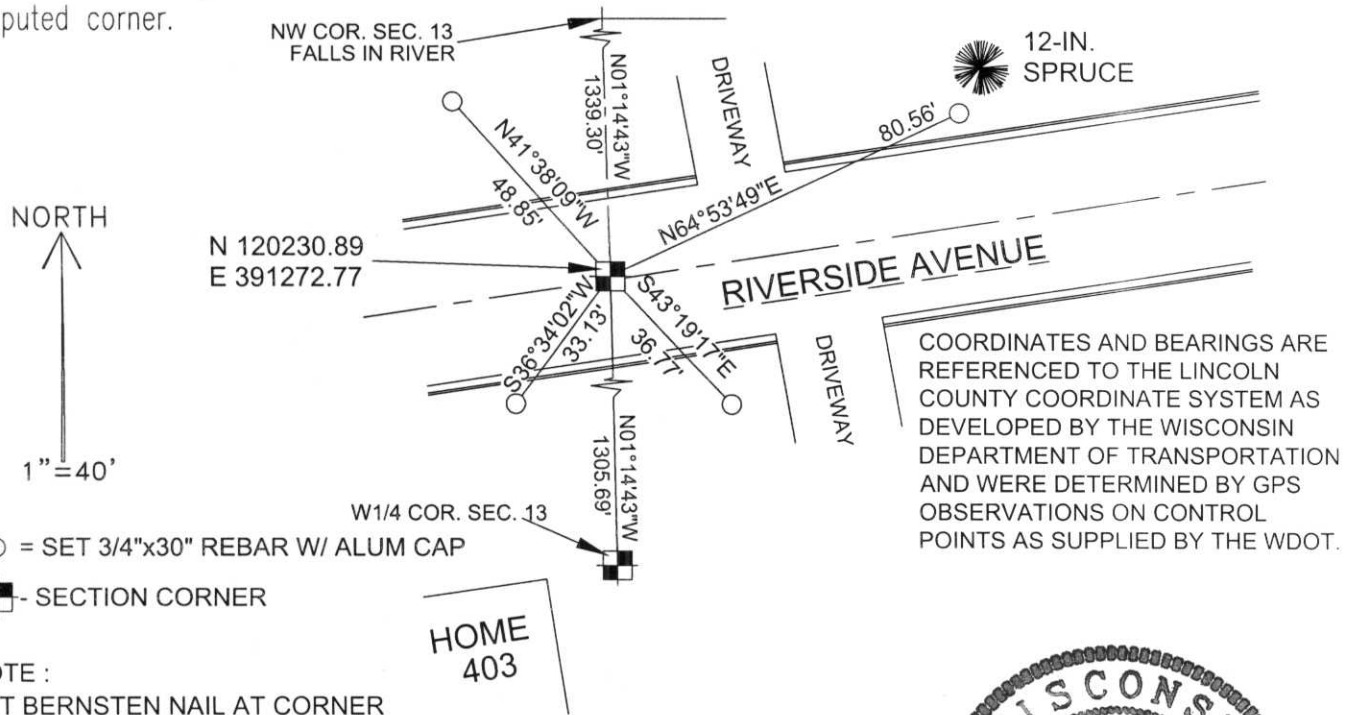
Section 13

(b)(f)(g)(h) Description of monument found at this corner and if it was accepted, state all evidence (material, testimonial, occupational, plats, records, other monuments) used as a basis for accepting. If not accepted or if nothing was found, state evidence used as basis for establishing location. If reestablished through lost corner proportionate methods, indicate all monuments, distances and directions used to establish.

I SET THIS MEANDER CORNER ON A LINE BETWEEN THE WEST 1/4 CORNER OF SECTION 13 AND THE COMPUTED NORTHWEST CORNER OF SECTION 13. THE NORTHWEST CORNER OF SECTION 13 WAS SET EUIDISTANT FROM THE WEST 1/4 CORNER OF SECTION 13 AND THE WEST 1/4 CORNER OF SECTION 12 TO THE NORTH DUE TO LITTLE OCCUPATIONAL EVIDENCE OR OTHERWISE ALONG THE NORTH LINE OF THE NORTHWEST 1/4 OF SECTION 13. I HELD FOUND MONUMENTS FROM RECORDED SURVEYS ALONG THE WEST LINE OF THE NORTHWEST 1/4 OF SECTION 13 TO DETERMINE THE EAST & WEST LOCATION OF THE NORTHWEST CORNER OF SECTION 13.

RECEIVED AT LINCOLN COUNTY COURTHOUSE THIS 23<sup>RD</sup> DAY OF July 20 01  
*Tony Dalkin*  
LAND INFORMATION OFFICE

(c)(d)(e) Plan view of corner with ties to at least 4 witness monuments. If in disagreement with previously established corner, show the distances between the two corners and also indicate the ties to the disputed corner.



(i) I, David A. Renaud, WI R.L.S. S-2142  
(type or print name) certify that the corner location on this record was determined by me or under my direction and control and that this U.S. Public Land Survey Monument Record is correct and complete to the best of my knowledge and belief.

*David A. Renaud* 6/25/01  
Signature Date

Index No. IS-21

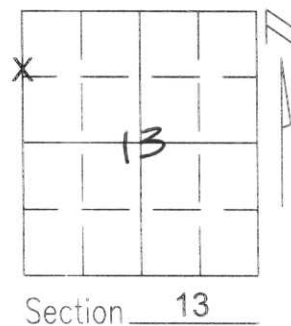
# U.S. PUBLIC LAND SURVEY MONUMENT RECORD

Note: This form is intended and designed to fulfill all requirements of Wisconsin Administrative Code, Chapter A-E 5.02, U.S. Public Land Survey Monument Record (3)(a)(b)(c)(d)(e)(f)(g)(h)(i). An additional sheet may be added if necessary to conform with said requirements.

(a) Corner location: Township 31 North  
 Range 6 East

Town/City/Village MERRILL

County LINCOLN



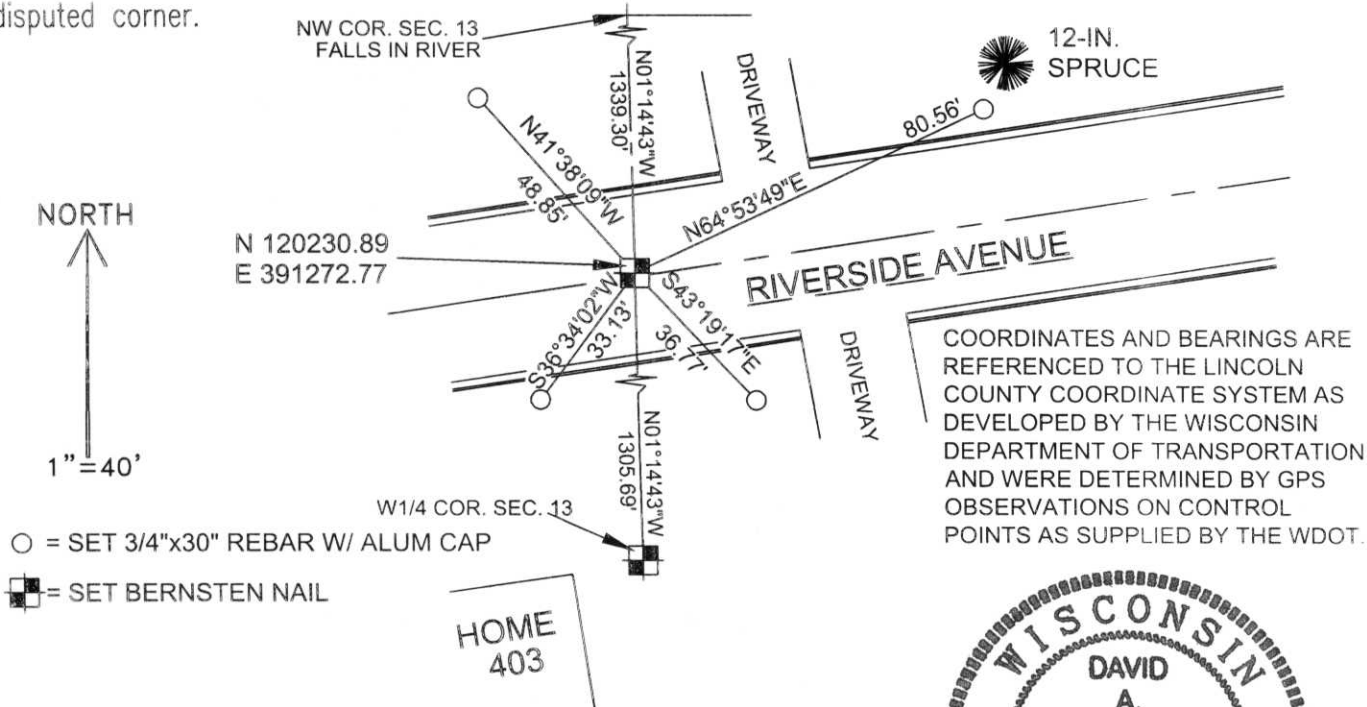
Section 13

(b)(f)(g)(h) Description of monument found at this corner and if it was accepted, state all evidence (material, testimonial, occupational, plats, records, other monuments) used as a basis for accepting. If not accepted or if nothing was found, state evidence used as basis for establishing location. If reestablished through lost corner proportionate methods, indicate all monuments, distances and directions used to establish.

I SET THIS MEANDER CORNER ON A LINE BETWEEN THE WEST 1/4 CORNER OF SECTION 13 AND THE COMPUTED NORTHWEST CORNER OF SECTION 13. THE NORTHWEST CORNER OF SECTION 13 WAS SET EUIDISTANT FROM THE WEST 1/4 CORNER OF SECTION 13 AND THE WEST 1/4 CORNER OF SECTION 12 TO THE NORTH DUE TO LITTLE OCCUPATIONAL EVIDENCE OR OTHERWISE ALONG THE NORTH LINE OF THE NORTHWEST 1/4 OF SECTION 13. I HELD FOUND MONUMENTS FROM RECORDED SURVEYS ALONG THE WEST LINE OF THE NORTHWEST 1/4 OF SECTION 13 TO DETERMINE THE EAST & WEST LOCATION OF THE NORTHWEST CORNER OF SECTION 13.

RECEIVED AT LINCOLN COUNTY  
 COURTHOUSE THIS 25<sup>TH</sup> DAY  
 OF June 20 01  
*Tony Dalko*  
 LAND INFORMATION OFFICE

(c)(d)(e) Plan view of corner with ties to at least 4 witness monuments. If in disagreement with previously established corner, show the distances between the two corners and also indicate the ties to the disputed corner.



(i) I, David A. Renaud, WI R.L.S. S-2142  
 (type or print name) certify that the corner location on this record was determined by me or under my direction and control and that this U.S. Public Land Survey Monument Record is correct and complete to the best of my knowledge and belief.



*David A. Renaud* 6-7-01  
 Signature Date

Index No. IS-21