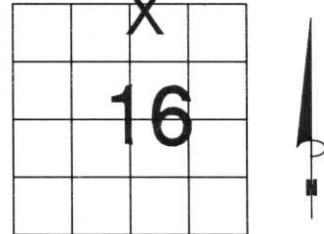


U.S. PUBLIC LAND SURVEY MONUMENT RECORD

NOTE: THIS FORM IS INTENDED AND DESIGNED TO FULFILL ALL REQUIREMENTS OF WISCONSIN ADMINISTRATIVE CODE, CHAPTER A-E 7.08 U.S. PUBLIC LAND SURVEY MONUMENT RECORD (3) (a) (b) (c) (d) (e) (f) (g) (h) (i). AN ADDITIONAL SHEET MAY BE ADDED IF NECESSARY TO CONFORM WITH SAID REQUIREMENTS.

(a) CORNER LOCATION: TOWNSHIP 31 NORTH
 RANGE 6 EAST/WEST
 TOWN/CITY/VILLAGE SCOTT
 COUNTY LINCOLN



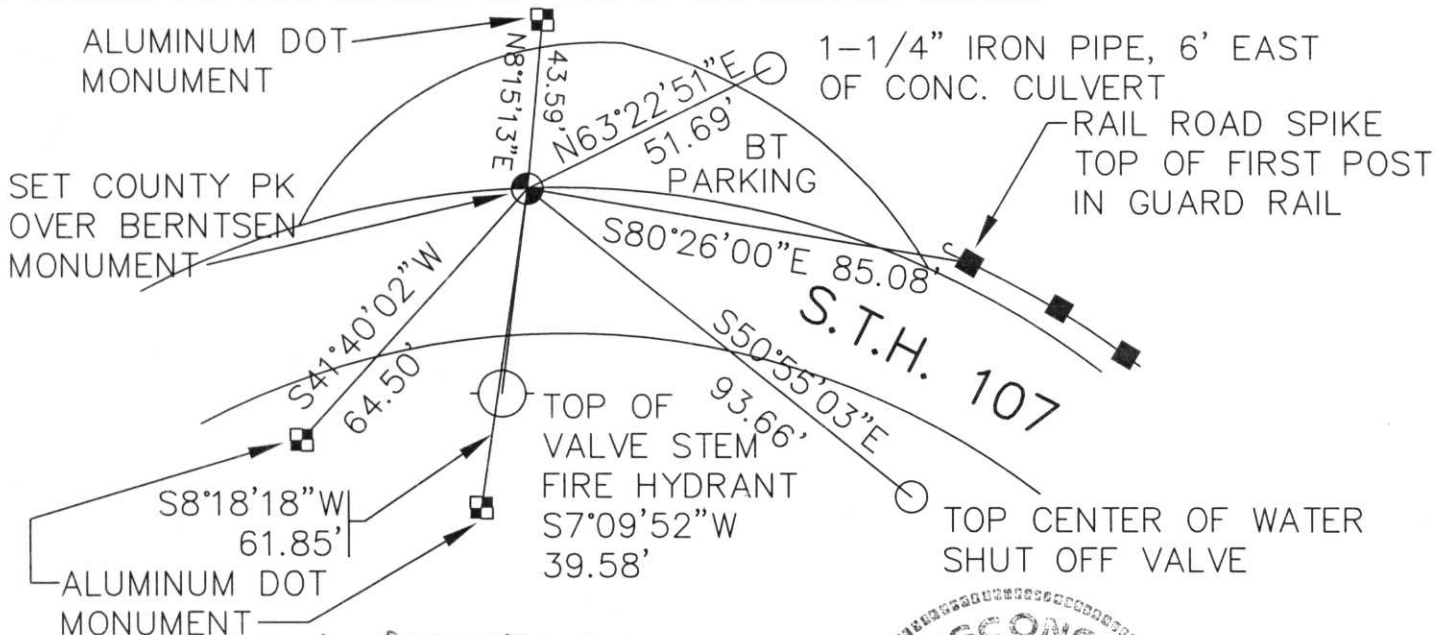
SECTION 16

(b) (f) (g) (h) DESCRIPTION OF MONUMENT FOUND AT THIS CORNER AND IF IT WAS ACCEPTED, STATE ALL EVIDENCE (MATERIAL, TESTIMONIAL, OCCUPATIONAL, PLATS, RECORDS, OTHER MONUMENTS) USED AS BASIS FOR ACCEPTING. IF NOT ACCEPTED OR IF NOTHING WAS FOUND, STATE EVIDENCE USED AS BASIS FOR ESTABLISHING LOCATION. IF REESTABLISHED THROUGH LOST CORNER PROPORTIONATE METHODS, INDICATE ALL MONUMENTS, DISTANCES AND DIRECTIONS USED TO ESTABLISH. INDICATE TYPE OF MONUMENT FOUND OR SET AND SIGN POST.

CORNER DETERMINED BY SCHWARK, APRIL, 1978. HE SET A LINCOLN COUNTY BERNTSEN MONUMENT. COULD FIND ONLY ONE OF HIS TIES. FOUND THAT STATE HIGHWAY DEPARTMENT HAD SET OUT THREE WITNESS MONUMENTS. USING THEM, WE REESTABLISHED CORNER LOCATION (VERIFIED BY STRONG MAGNETIC READING) SET A COUNTY PK NAIL, AND RETIED.

**RECEIVED AT LINCOLN COUNTY
 COURTHOUSE THIS 30th DAY
 OF Sept 19 98
Pat Priebe
 TAX DESCRIPTION OFFICE**

(c) (d) (e) PLAN VIEW OF CORNER WITH TIES TO AT LEAST 4 WITNESS MONUMENTS. IF IN DISAGREEMENT WITH PREVIOUSLY ESTABLISHED CORNER, SHOW THE DISTANCES BETWEEN THE TWO CORNERS AND ALSO INDICATE THE TIES TO THE DISPUTED CORNER.



(i) I, DAVID L. OSTERBRINK
 (TYPE OR PRINT NAME) CERTIFY THAT THE CORNER LOCATION ON THIS RECORD WAS DETERMINED BY ME OR UNDER MY DIRECTION AND CONTROL AND THAT THIS U.S. PUBLIC LAND SURVEY MONUMENT RECORD IS CORRECT AND COMPLETE TO THE BEST OF MY KNOWLEDGE AND BELIEF.



INDEX NO. I-11

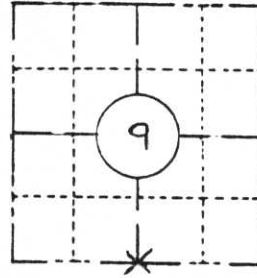
David L. Osterbrink 9-22-98
 SIGNATURE DATE

PRESERVATION OF LANDMARKS

(Pursuant to Section 59.635(7) Wisconsin Statutes

E-D-707-69

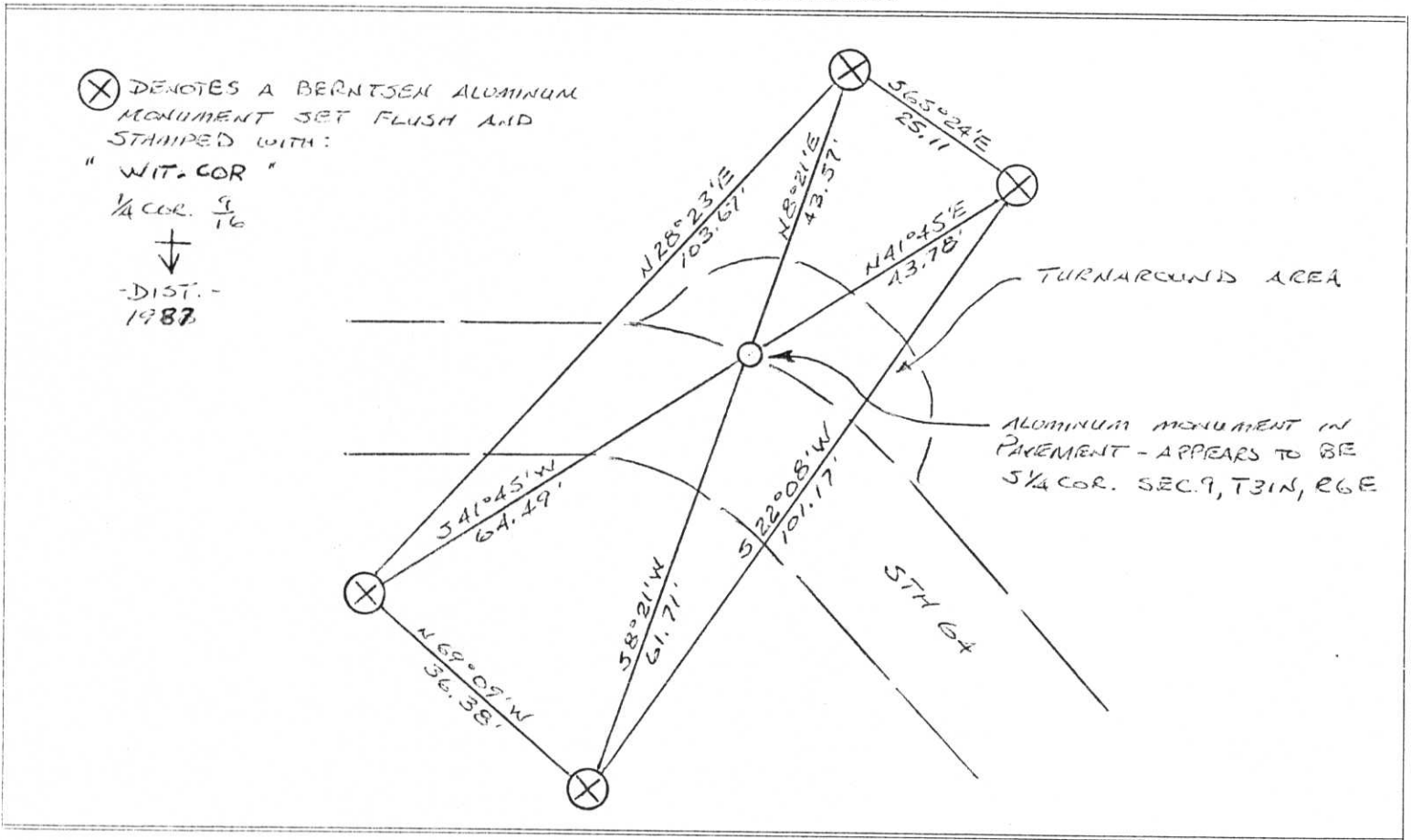
COUNTY <i>LINCOLN</i>		
TOWN <i>SCOTT</i>		
HIGHWAY <i>STH 64</i>		
SECTION <i>9</i>	TOWNSHIP <i>31 N</i>	RANGE <i>6 E</i>
TYPE OF LANDMARK <i>ALUMINUM MONUMENT</i>		



LOCATION SKETCH
(Location of landmark indicated by "x")



This space for copy of field notes or ties to the above described landmarks



FILED UNDER PROJECT <i>9000 - 01 - 70</i>			COUNTY CLERK'S OFFICE	
DISTRICT OFFICE NUMBER <i>7</i>	CITY <i>RHINELANDER</i>	COUNTY	COUNTY OF <i>Lincoln</i>	WISCONSIN } SS
LOCATED OR ESTABLISHED BY NAME <i>JACK R. WALLIN / of R. Bouneville</i> TITLE <i>SURVEY CREW CHIEF</i> DATE <i>8-3-87</i>			DATE RECEIVED FOR RECORD <i>2-10-88</i>	DATE COPY SENT TO COUNTY SURVEYOR <i>2-10-88</i>
			SIGNATURE OF COUNTY CLERK <i>Elizabeth A. McHenry</i>	

I-11

CERTIFIED LAND CORNER RESTORATION

Index No. I-11

State of Wisconsin }
County of Lincoln } ss.

History of original corner establishment:

I Sheridan D. Schwark, do hereby certify that on the 12th day of April, 1978, I found evidence of the North one-quarter corner of Section 16 Township 31, North, Range 6 East, Fourth, Principal Meridian, as described hereon; and that from this evidence I established a new monument and accessories as described hereon to perpetuate the original location of this corner.

Date: March, 1852
Surveyor: A.G. & F.S. Ellis
Monument: Wood post
Witnesses: 10" Hemlock S61°E 13 links
12" " N27°W 20 "

Resident witnesses:

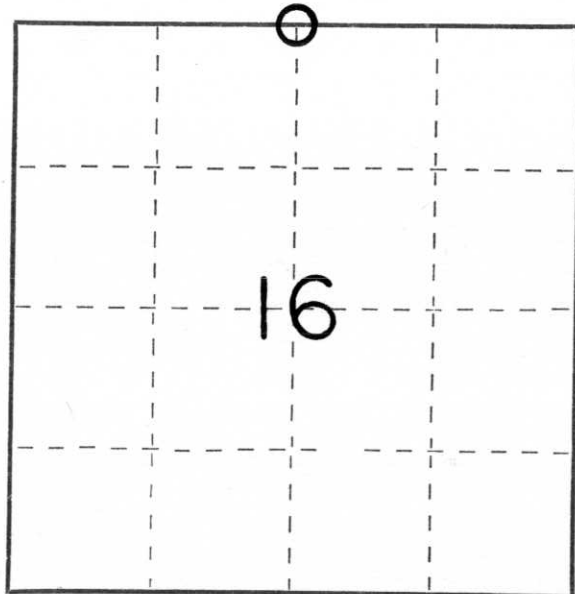
.....
.....
.....

Description of corner evidence found:

We excavated the area down to natural grade and found no evidence of any corner. We then reestablished its position using the Highway plans from State Project No. 7035 (1936) and from the Plat of Ritters (1949) Subdivision. We checked the tie to the corner from the Plat of Ament's Subdivision (1955) and there was a 10' plus or minus discrepancy. Because the other 2 ties fit the same point, we decided to use them and disregard the Ament Subdivision tie.

Description of monument and accessories I established to perpetuate the original location of this corner.

We set a Lincoln County Berntsen monument with the following witness monuments:
P.K. nail set in power pole No. 3106-16E26, bearing S3°E 42.36'
P.K. nail set in top of first guard rail post north side of road, bearing S84°E 83.83'
P.K. nail set in 16" Maple, bearing N35°E 52.15'
P.K. nail set in top of first guard rail post north side of road, bearing N56°W 43.28'
Center top of fire hydrant No. 317, bearing S7°W 39.55'



○ = Corner monument restored.

Dated at Merrill, Wis., this 14th day of April, 1978.

Signature Sheridan D. Schwark Title Registered Land Surveyor Registration No. S-1205
(County Surveyor, Registered Land Surveyor, or other duly authorized official)

Office of Register of Deeds, County of _____, I hereby certify that the within instrument was filed in this office for record on the _____ day of _____, 19____ at _____ o'clock _____ M.

.....
(Register of Deeds)

By _____ Deputy