

U.S. PUBLIC LAND SURVEY MONUMENT RECORD

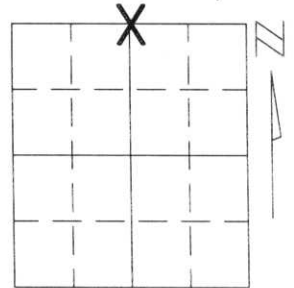
Note: This form is intended and designed to fulfill all requirements of Wisconsin Administrative Code, Chapter A-E 5.02, U.S. Public Land Survey Monument Record (3)(a)(b)(c)(d)(e)(f)(g)(h)(i). An additional sheet may be added if necessary to conform with said requirements.

(a) Corner location: Township 31 North

Range 6 East

Town/City/Village CORNING

County LINCOLN

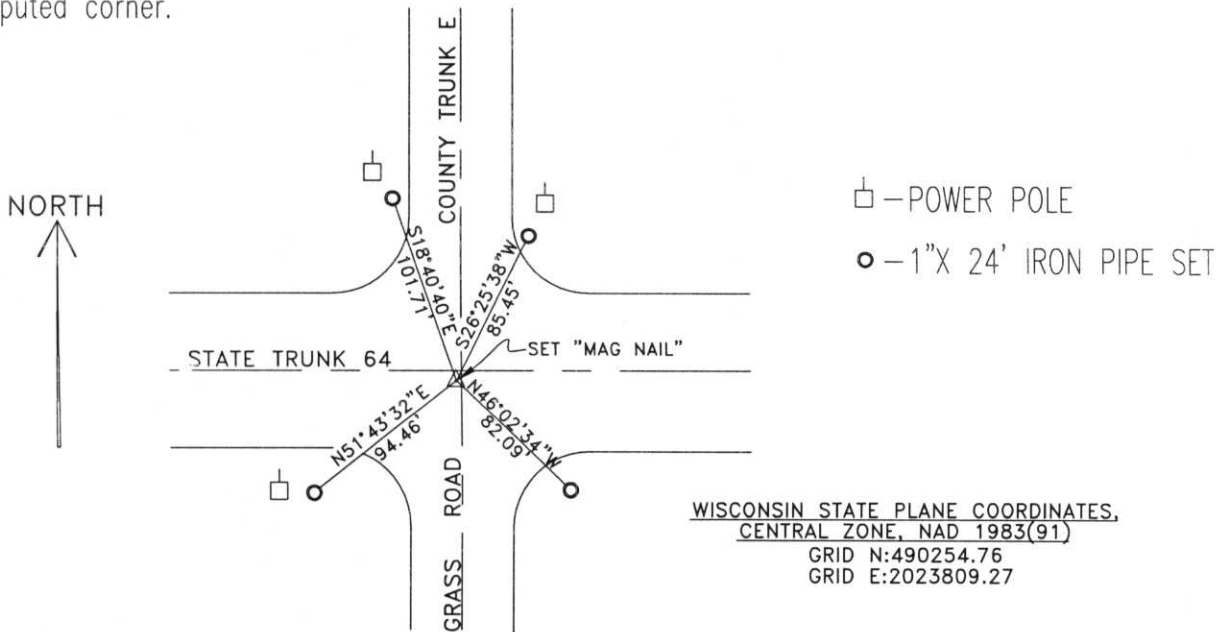


Section 18

(b)(f)(g)(h) Description of monument found at this corner and if it was accepted, state all evidence (material, testimonial, occupational, plats, records, other monuments) used as a basis for accepting. If not accepted or if nothing was found, state evidence used as basis for establishing location. If reestablished through lost corner proportionate methods, indicate all monuments, distances and directions used to establish.

THE NORTH 1/4 CORNER OF SECTION 18 WAS RE-ESTABLISHED AND TIED OUT BY EDWIN ABENDROTH IN 1997. WE MEASURED TO A FOUND SURVEY MARKER PIN THAT FIT ABENDROTH'S TIES. THE TIES AND MARKER WERE DESTROYED DURING ROAD CONSTRUCTION ON HIGHWAY 64. WE RESET THE CORNER FROM TIES REMOVED FROM CONSTRUCTION ACTIVITIES AND TIED THE CORNER OUT AS SHOWN BELOW.

(c)(d)(e) Plan view of corner with ties to at least 4 witness monuments. If in disagreement with previously established corner, show the distances between the two corners and also indicate the ties to the disputed corner.

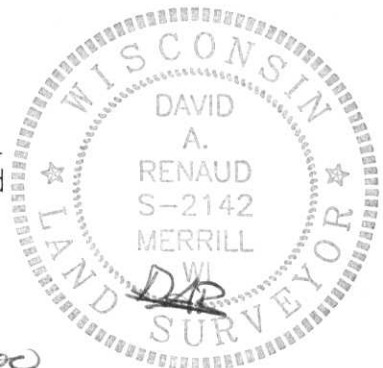


WISCONSIN STATE PLANE COORDINATES,
CENTRAL ZONE, NAD 1983(91)
GRID N:490254.76
GRID E:2023809.27

RECEIVED AT LINCOLN COUNTY
COURTHOUSE THIS 27TH DAY
OF November 20 00
Tony Radman
LAND INFORMATION OFFICE

(i) I, DAVID A. RENAUD, R.L.S. S-2142

(type or print name) certify that the corner location on this record was determined by me or under my direction and control and that this U.S. Public Land Survey Monument Record is correct and complete to the best of my knowledge and belief.



David A. Renaud 14 NOVEMBER 2000
Signature Date

U.S. PUBLIC LAND SURVEY MONUMENT RECORD

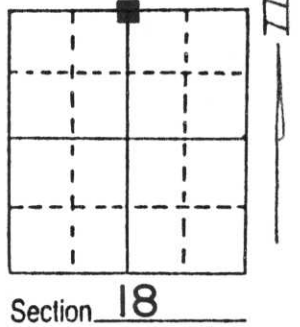
Note: This form is intended and designed to fulfill all requirements of Wisconsin Administrative Code, Chapter A-E 5.02, U.S. Public Land Survey Monument Record (3) (a) (b) (c) (d) (e) (f) (g) (h) (i). An additional sheet may be added if necessary to conform with said requirements.

(a) Corner location: Township 31 North

Range 6 East

Town/City/Village SCOTT

County LINCOLN

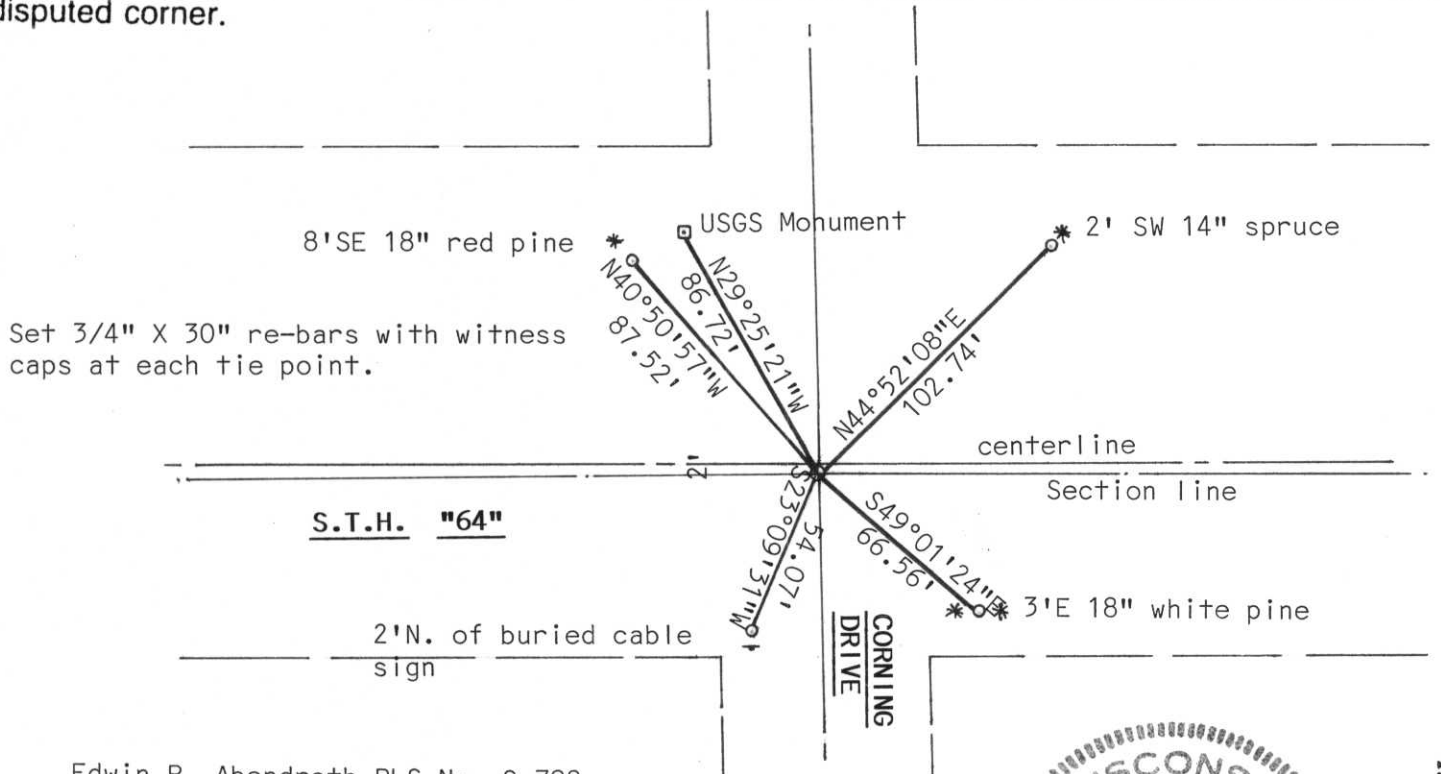


(b) (f) (g) (h) Description of monument found at this corner and if it was accepted, state all evidence (material, testimonial, occupational, plats, records, other monuments) used as a basis for accepting. If not accepted or if nothing was found, state evidence used as basis for establishing location. If reestablished through lost corner proportionate methods, indicate all monuments, distances and directions used to establish.

Did not dig in S.T.H. "64" because of concrete highway. used D.O.T. plans to determine corner location. Set survey marker at corner location. Corner checked with remonumentation notes.

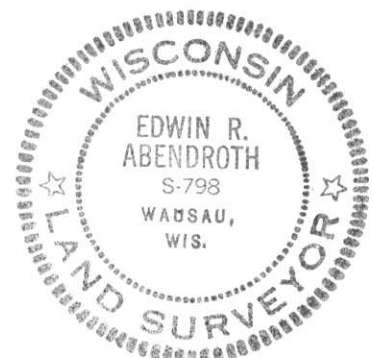
RECEIVED AT LINCOLN COUNTY
COURTHOUSE THIS 6th DAY
OF Nov 19 97
Pat Priebe
TAX DESCRIPTION OFFICE

(c) (d) (e) Plan view of corner with ties to at least 4 witness monuments. If in disagreement with previously established corner, show the distances between the two corners and also indicate the ties to the disputed corner.



(i) I, Edwin R. Abendroth RLS No. S-798
(type or print name) certify that the corner location on this record was determined by me or under my direction and control and that this U.S. Public Land Survey Monument Record is correct and complete to the best of my knowledge and belief.

Edwin R. Abendroth October 27, 1997
Signature Date



Index No. 7-3